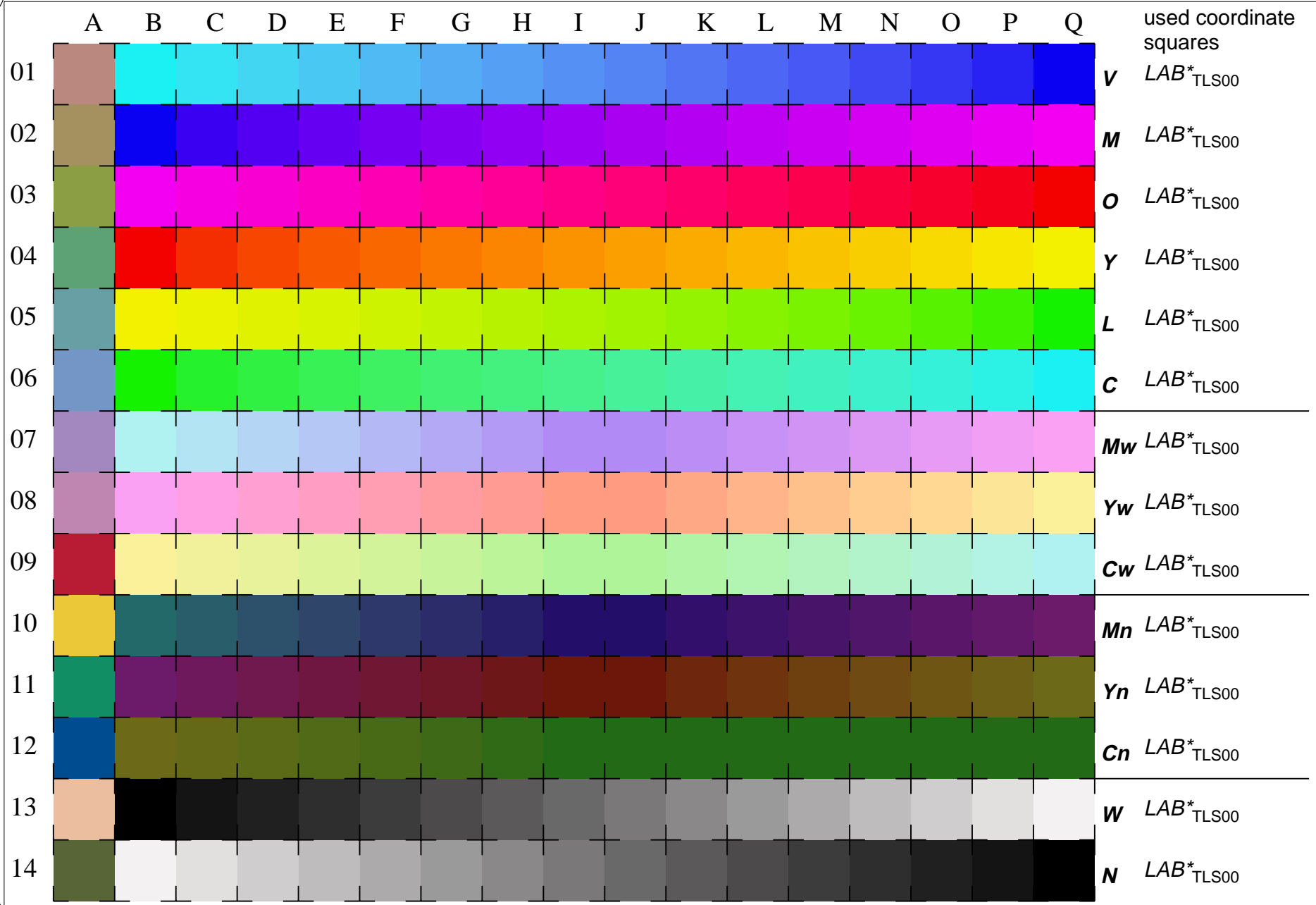


See for similar files: <http://www.ps.bam.de/LE72/LE72.HTM>
 Information and Order: <http://www.ps.bam.de> Version 2.0, io=5,5

BAM registration: 20030101-LE72/10L/L72E01NP.PS/.PDF BAM material: code=rha4ta
 application for measurement of monitor (Yr=2.5) and printer output



16 equidistant CIELAB steps in $LAB^*(TLS00)$ for colour series C-V, V-M, M-O, O-Y, Y-L, L-C, N-W, W-N, Cw-Mw, Mw-Yw, Yw-Cw, Cn-Mn, Mn-Yn, Yn-Cn and 14 CIE-test colours (left)

Test chart LE72: 16 CIELAB steps in LAB^* input, TLS00: LAB^* setcolor
 Maximum and half (47%) chroma, CIE-test colours output, TLS00: no change compared to input