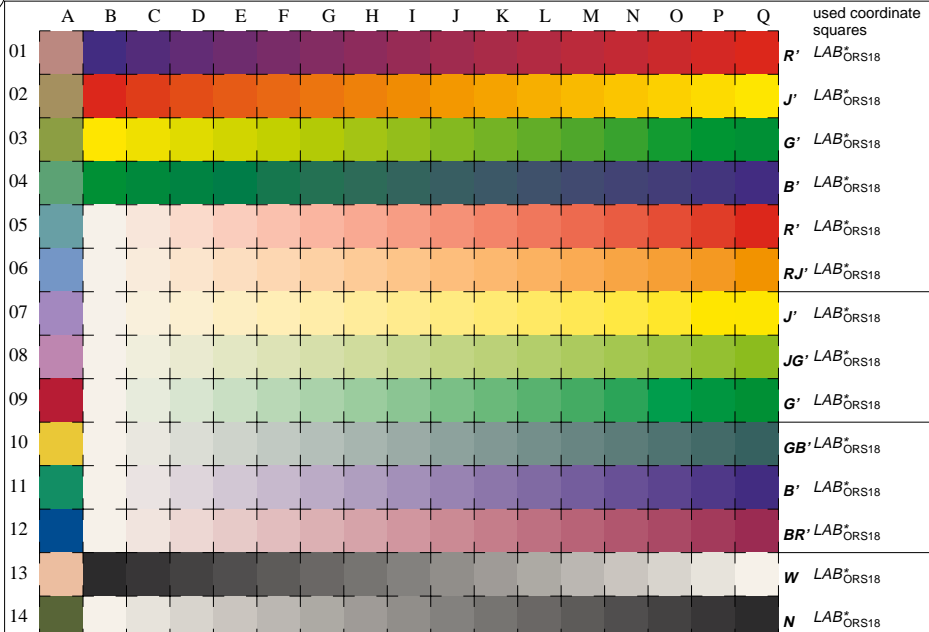


See for similar files: <http://www.ps.bam.de/LE86/>; <http://www.ps.bam.de/LE86/L86E00N1.PS/.TXT>
 Information and Order: <http://www.ps.bam.de> Version 2.0, io=5,5



LE860-7, 16 equidistant CIELAB steps in $cmY0^*(ORS18)$ for colour series B-R, R-J, J-G, G-B, W-R, W-RJ, W-J, W-JG, W-G, W-GB, W-B, W-BR, W-R, W-N, N-W and 14 CIE-test colours (left)

Test chart LE86: Elementary colours RJGB' (prime) input,ORS18: $LAB^*(ORS18)$ setcolor
 Hue circle and white – chromatic, CIE-test colours output,ORS18: no change compared to input

BAM registration: 20070901-LE86/L86E00N1.PS/.TXT
 application for measurement of monitor (Y1=2.5) and printer output
 BAM material: code=thata