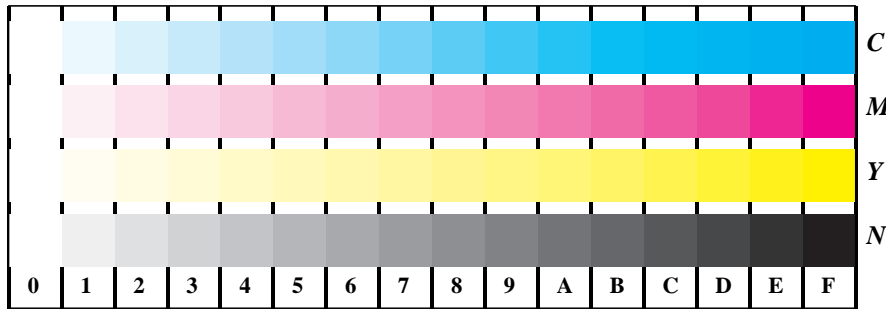


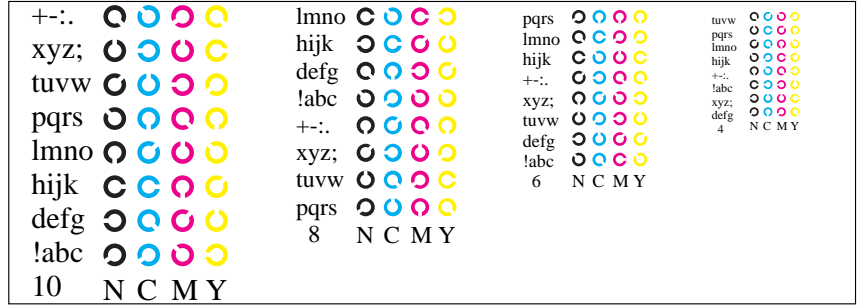
See for similar files: <http://www.ps.bam.de/ME10/>  
Information and Order: <http://www.ps.bam.de>  
Version 2.0, io=1,1

BAM registration: 20080401-ME10/10L/L10E00NP.PS/.PDF  
Full page: application for displays

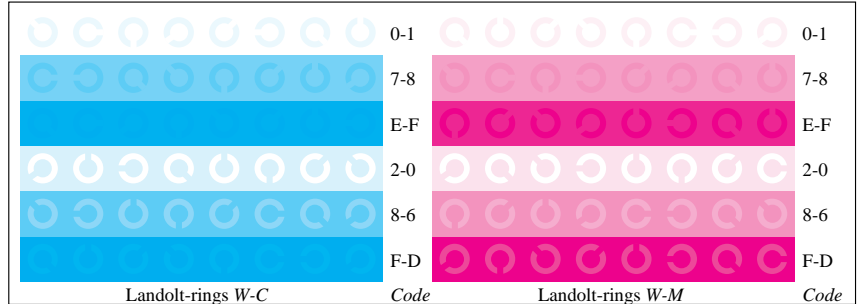
BAM material: code=th4ta



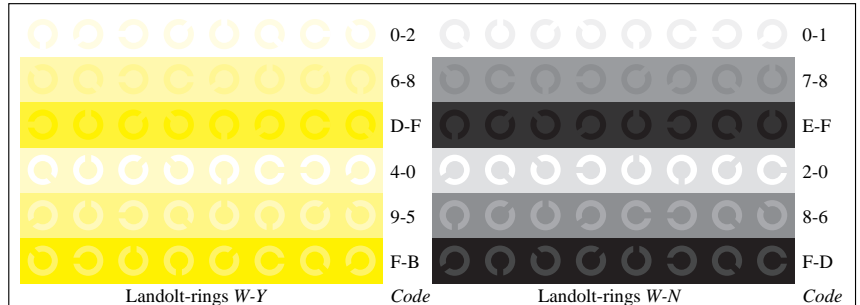
ME100-1N, Picture B4: 16 equidistant steps W-C, W-M, W-Y and W-N; PS operator *cmy0\*/000n\* setcmykcolor*



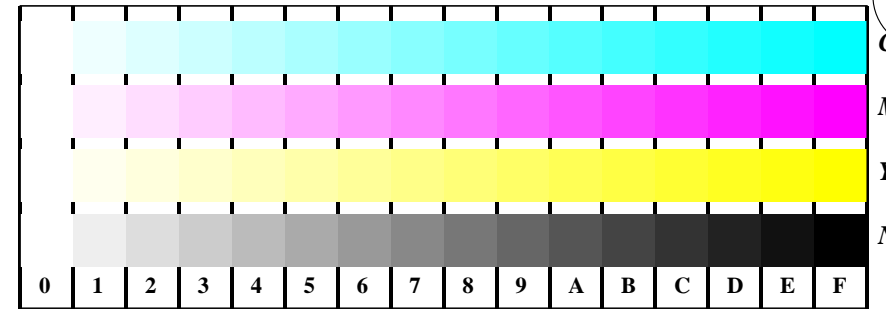
ME100-3N, Picture B5: Script and Landolt-rings N, M, C and Y; Use of PS operator *cmy0\*/000n\* setcmykcolor*



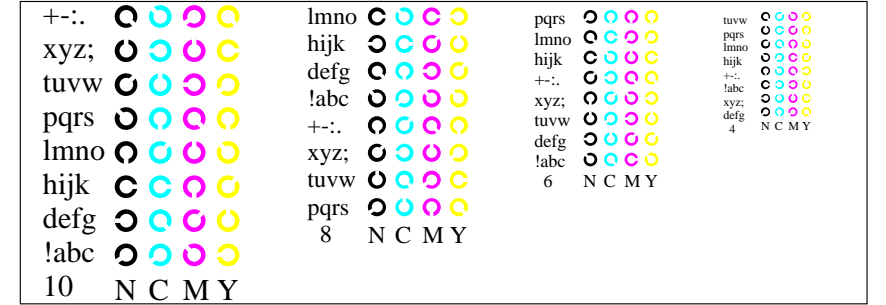
ME100-5N, Picture B6: Landolt-rings W-C and W-M; Use of PS operator *cmy0\*/000n\* setcmykcolor*



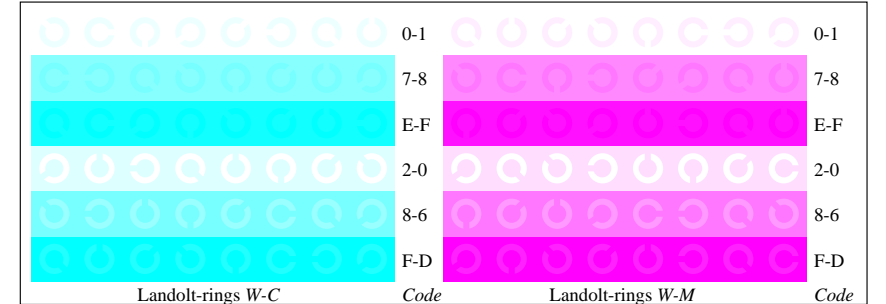
ME100-7N, Picture B7: Landolt-rings W-Y and W-N; Use of PS operator *cmy0\*/000n\* setcmykcolor*



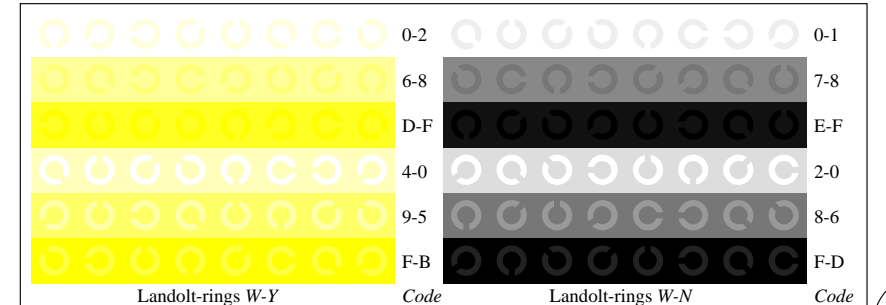
ME101-1N, Picture B4: 16 equidistant steps W-C, W-M, W-Y and W-N; PS operator *olv\* setrgbcolor / w\* setgray*



ME101-3N, Picture B5: Script and Landolt-rings N, M, C and Y; Use of PS operator *olv\* setrgbcolor / w\* setgray*



ME101-5N, Picture B6: Landolt-rings W-C and W-M; Use of PS operator *olv\* setrgbcolor / w\* setgray*



ME101-7N, Picture B7: Landolt-rings W-Y and W-N; Use of PS operator *olv\* setrgbcolor / w\* setgray*