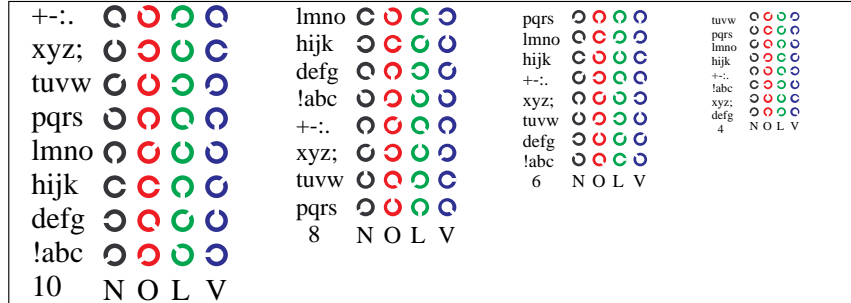
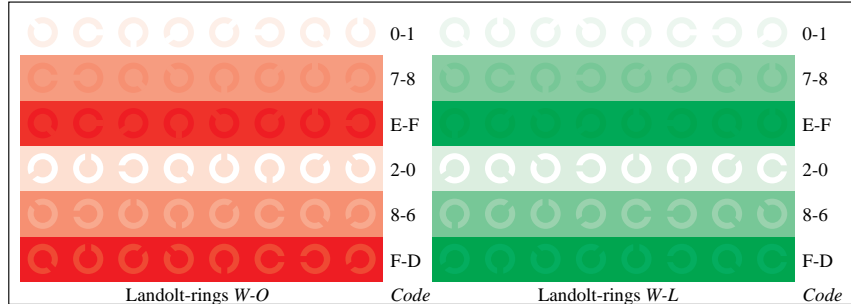


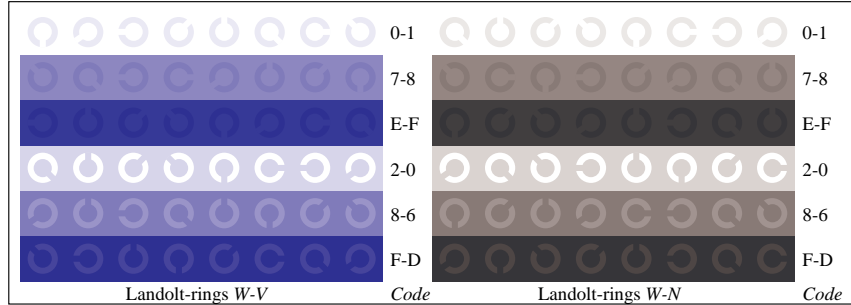
ME120-1N, Picture D4: 16 equidistant steps W-O, W-L, W-V and W-N; Use of PS operator *cmy0\* setcmykcolor* (only)



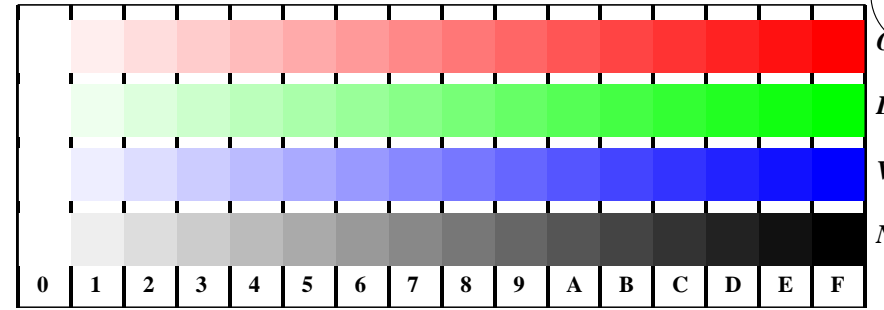
ME120-3N, Picture D5: Script and Landolt-rings N, O, L and V; Use of PS operator *cmy0\* setcmykcolor* (only)



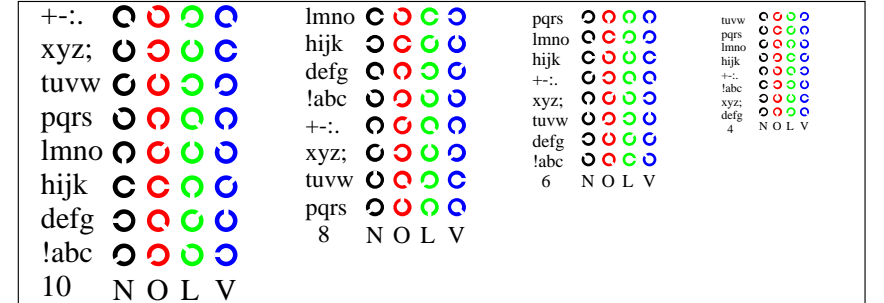
ME120-5N, Picture D6: Landolt-rings W-O and W-L; Use of PS operator *cmy0\* setcmykcolor* (only)



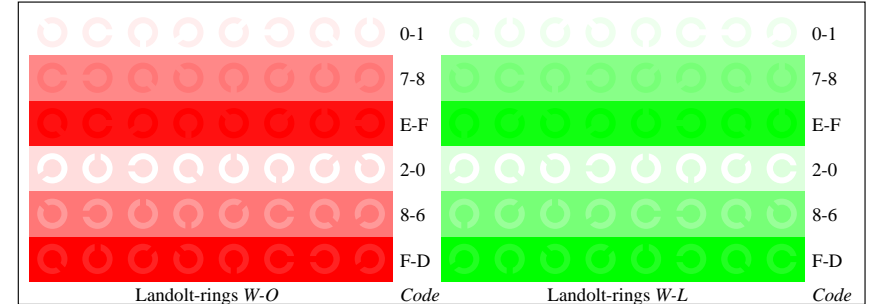
ME120-7N, Picture D7: Landolt-rings W-V and W-N; Use of PS operator *cmy0\* setcmykcolor* (only)



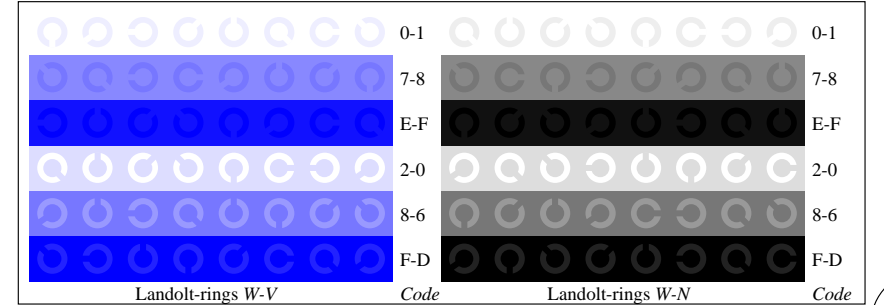
ME121-1N, Picture D4: 16 equidistant steps W-O, W-L, W-V and W-N; Use of PS operator *olv\* setrgbcolor* (only)



ME121-3N, Picture D5: Script and Landolt-rings N, O, L and V; Use of PS operator *olv\* setrgbcolor* (only)



ME121-5N, Picture D6: Landolt-rings W-O and W-L; Use of PS operator *olv\* setrgbcolor* (only)



ME121-7N, Picture D7: Landolt-rings W-V and W-N; Use of PS operator *olv\* setrgbcolor* (only)

See for similar files: <http://www.ps.bam.de/ME12/>  
 Information and Order: <http://www.ps.bam.de>

Version 2.0, io=1,1

BAM registration: 20080401-ME12/10L/L12E00NP.PS.PDF  
 Full page: application for displays

BAM material: code=th4t4