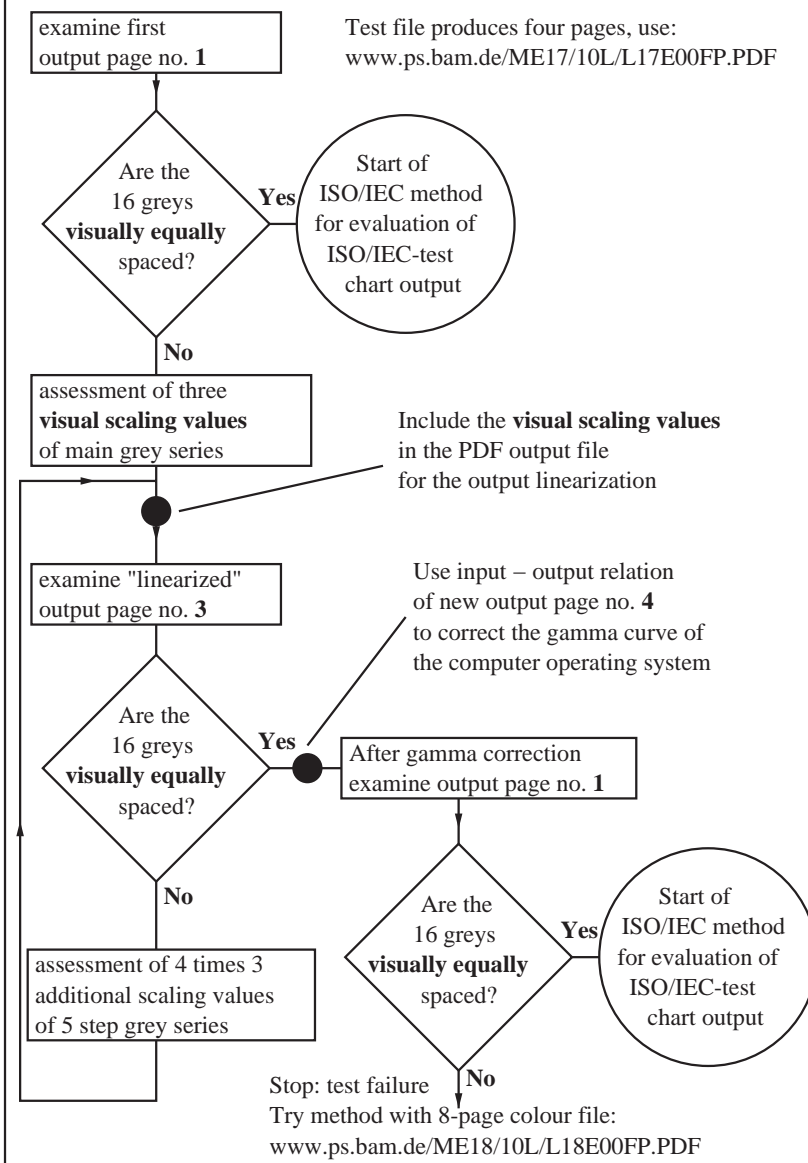


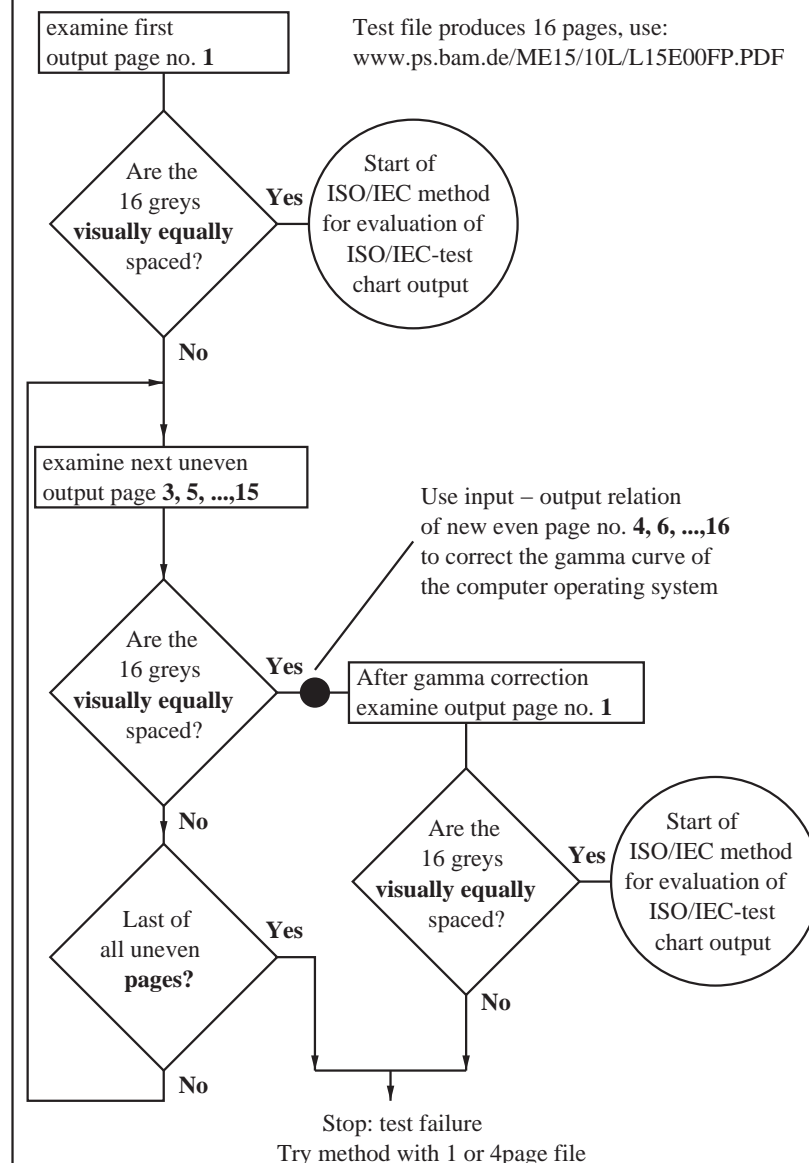
The visual 5 step spacing depends on hardware, software, and environment, for example on screen reflections of ambient light



ME190-7,

Test chart ME19 according to ISO 9241-306; linearisation method for test chart with 16 colour/grey steps; Flow chart of two test methods

The visual 16 step spacing depends on hardware, software, and environment, for example on screen reflections of ambient light



ME191-7

input:  $w^* \text{ setgray}$   
output:  $w^* \text{ setgray}$