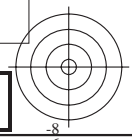
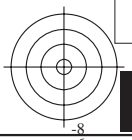
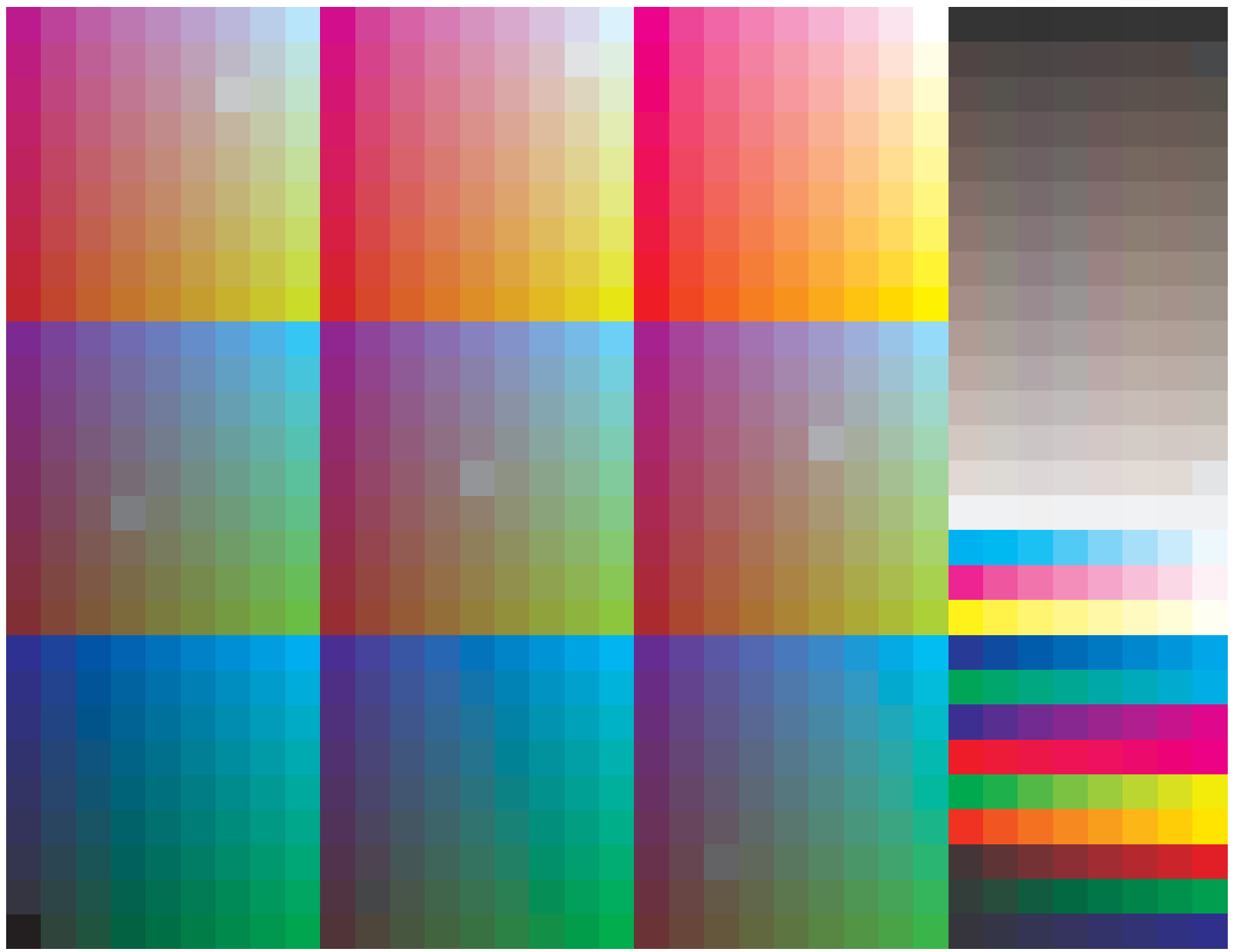


See for similar files: <http://www.ps.bam.de/ME20/ME20.HTM>
Information and Order: <http://www.ps.bam.de> Version 2.0, io=0,0; iORS; oORS, CIELAB

BAM registration: 20050101-ME20/10L/L20E00FP.PS/.PDF BAM material: code=tha4ta
application for measurement of monitor (Yr=2.5) and printer output

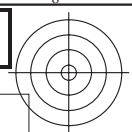
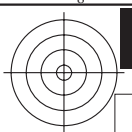


9x9x9 colour cube and colour tinted grey scales, hue circle with maximum chromaticness and W-CMY, OLV-N

Test chart ME20: 9x9x9 colour cube and grey scales
Hue circle and colour series W-CMY, OLV-N

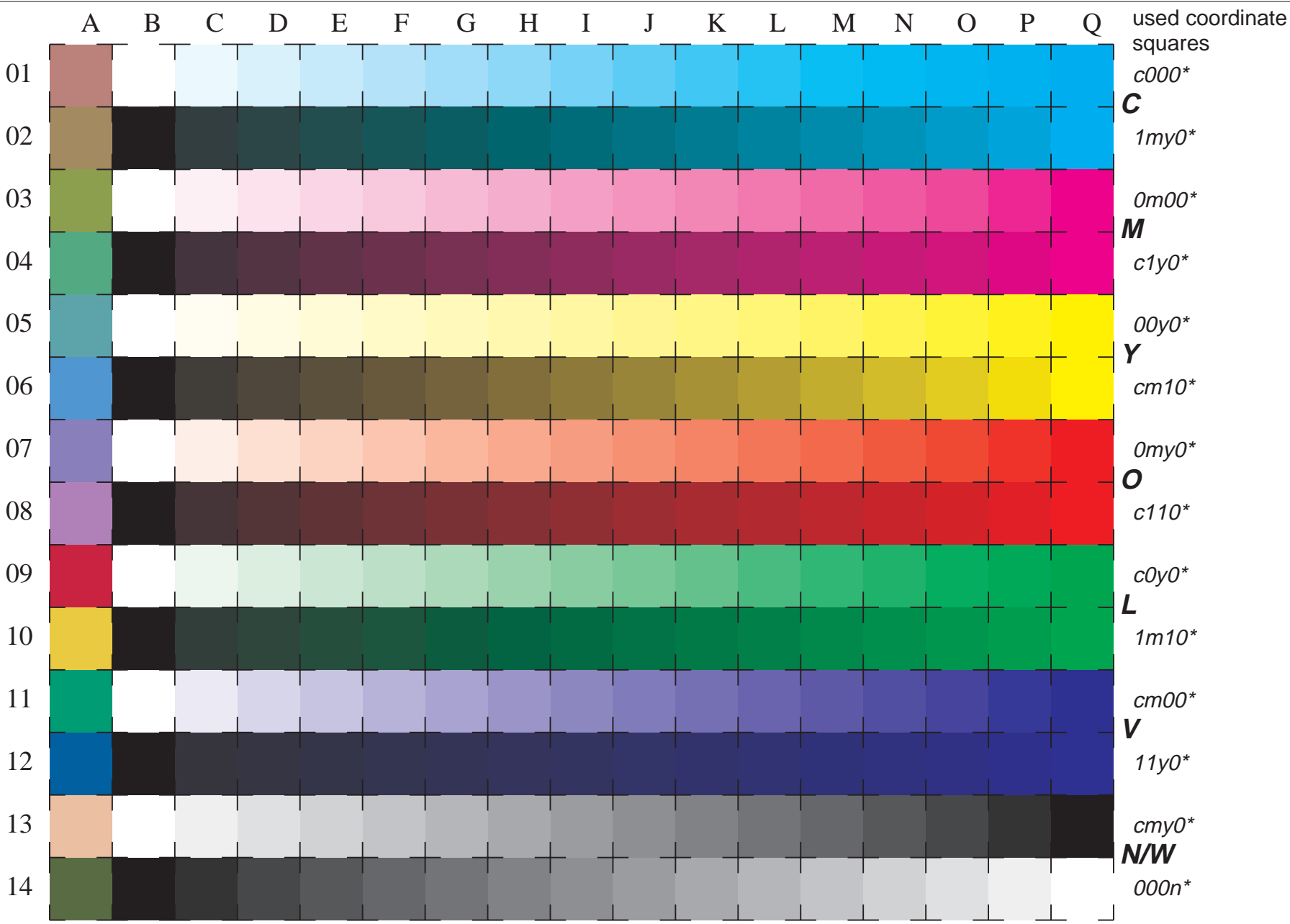
input(ORS18): *cmyn* setcmykcolor*
output(ORS18): *cmY0* / 000n* setcmykcolor*





See for similar files: <http://www.ps.bam.de/ME20/ME20.HTM>
 Information and Order: <http://www.ps.bam.de> Version 2.0, io=0,0; iORS; oORS, CIELAB

BAM registration: 20050101-ME20/10L/L20E01FP.PS/.PDF BAM material: code=tha4ta
 application for measurement of monitor (Yr=2.5) and printer output



used coordinate squares

01 $c000^*$

02 **C** $1m00^*$

03 $0m00^*$

04 **M** $c1y0^*$

05 $00y0^*$

06 **Y** $cm10^*$

07 $0my0^*$

08 **O** $c110^*$

09 $c0y0^*$

10 **L** $1m10^*$

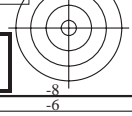
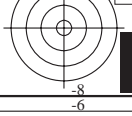
11 $cm00^*$

12 **V** $11y0^*$

13 $cm0^*$

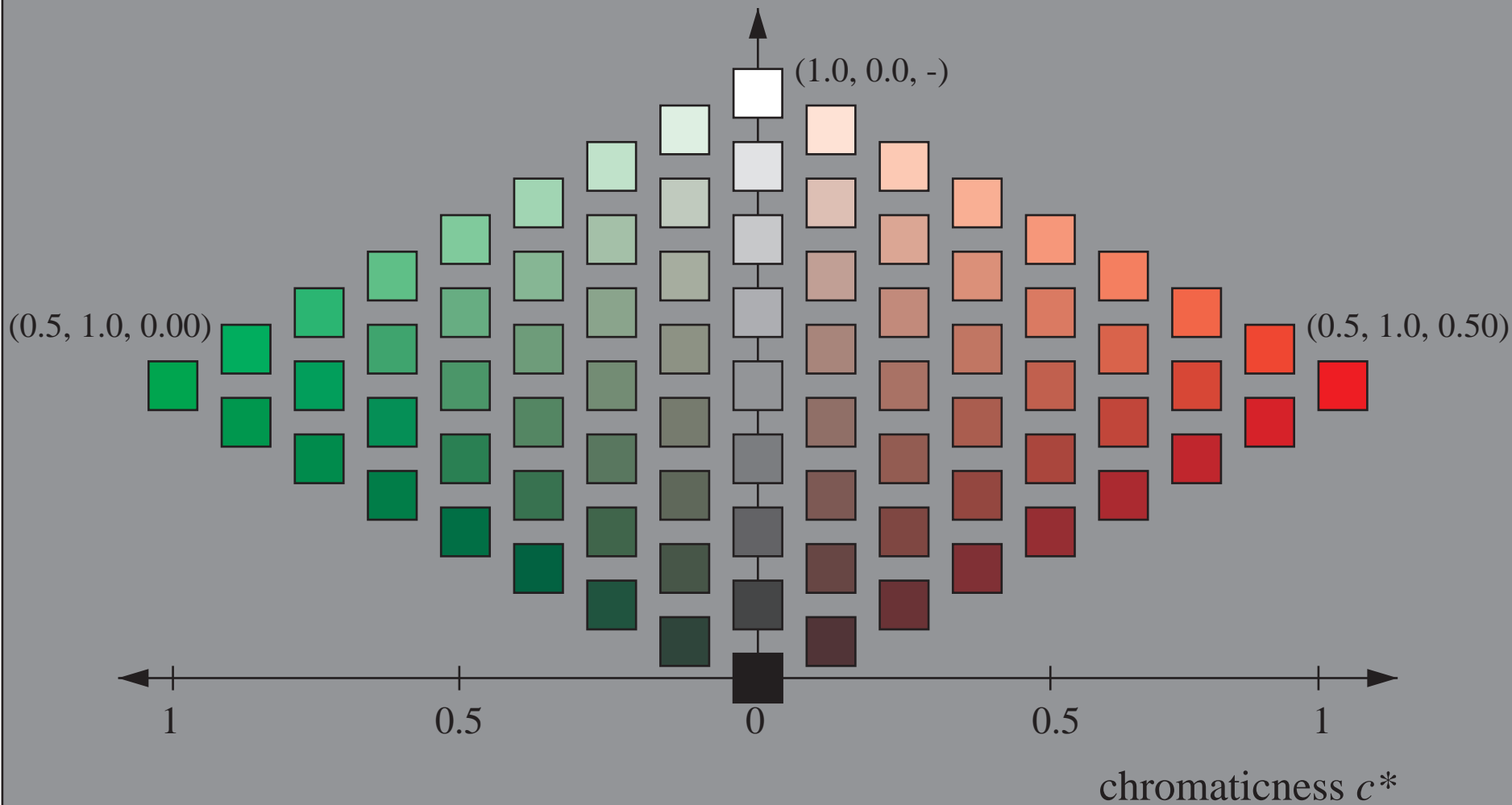
14 **N/W** $000n^*$

16 equidistant CIELAB steps: C-W, C-N, M-W, M-N, Y-W, Y-N, O-W, O-N, L-W, L-N, V-W, V-N, N-W (CMY), W-N and 14 CIE-test colours (left)



Colorimetric System *lab*tch*

triangle lightness t^*



See for similar files: <http://www.ps.bam.de/ME20/ME20.HTM>
Information and Order: <http://www.ps.bam.de> Version 2.0, io=0,0; iORS; oORS, CIELAB

BAM registration: 20050101-ME20/10L/L20E02FP.PS/.PDF BAM material: code=tha4ta
application for measurement of monitor (Yr=2.5) and printer output

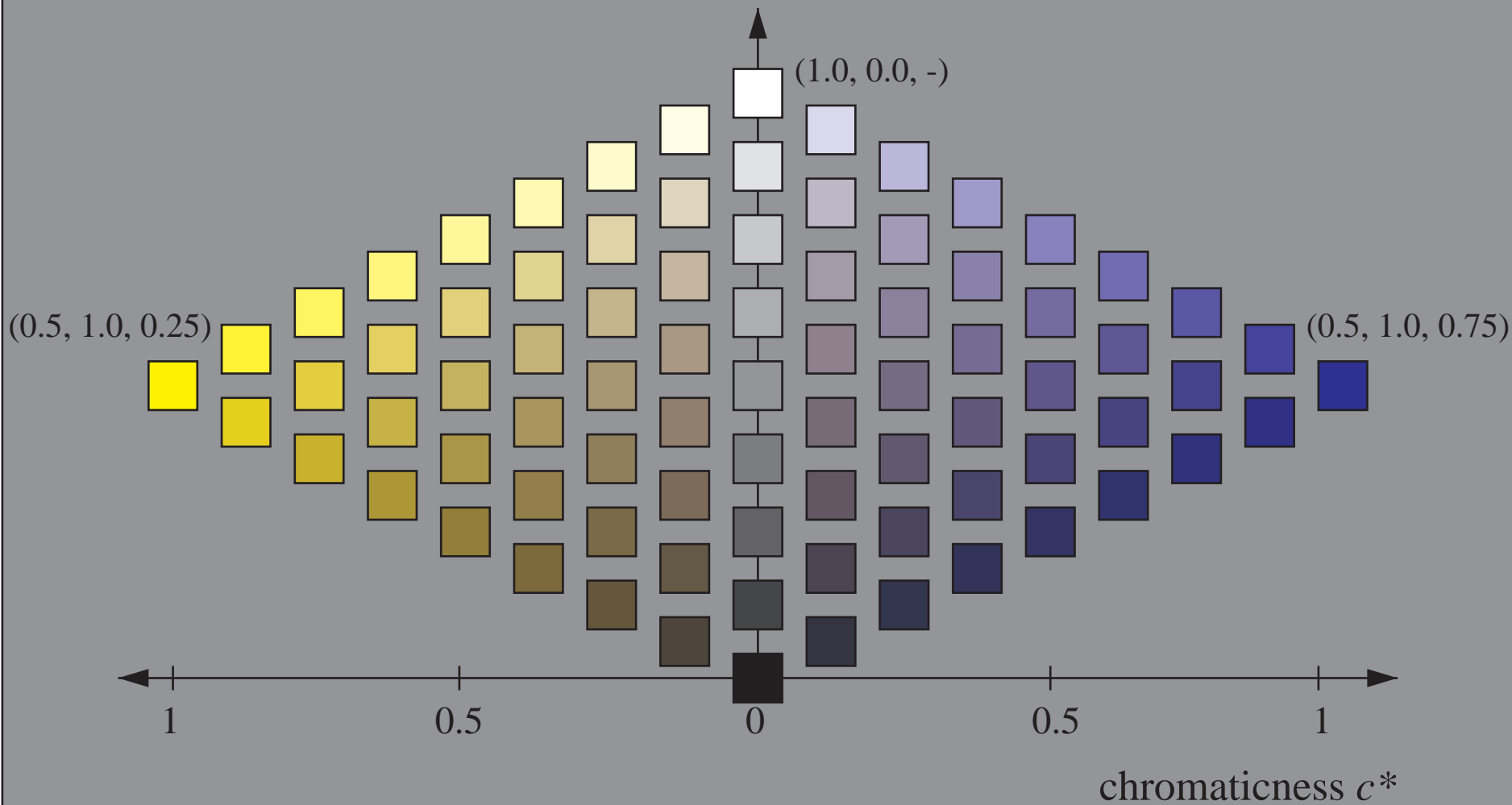
Colorimetric System: *lab*tch*, 9 steps scales for red-green hue

Test chart ME20: Colorimetric System *lab*tch*
9 steps scales for red-green hue

input(ORS18): *cmyn* setcmykcolor*
output(ORS18): *cmY0* / 000n* setcmykcolor*

Colorimetric System *lab*tch*

triangle lightness t^*



See for similar files: <http://www.ps.bam.de/ME20/ME20.HTM>
Information and Order: <http://www.ps.bam.de> Version 2.0, io=0,0; iORS; oORS, CIELAB

BAM registration: 20050101-ME20/10L/L20E03FP.PS/.PDF BAM material: code=tha4ta
application for measurement of monitor (Yr=2.5) and printer output

Colorimetric System: *lab*tch*, 9 steps scales for yellow-blue hue

Test chart ME20: Colorimetric System *lab*tch*
9 steps scales for blue-yellow hue

input(ORS18): *cmyn* setcmykcolor*
output(ORS18): *cmY0* / 000n* setcmykcolor*