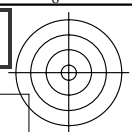
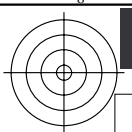


9x9x9 colour cube and colour tinted grey scales, hue circle with maximum chromaticness and W-CMY, OLV-N

Test chart ME21: 9x9x9 colour cube and grey scales  
Hue circle and colour series W-CMY, OLV-N

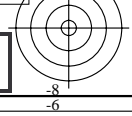
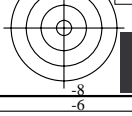
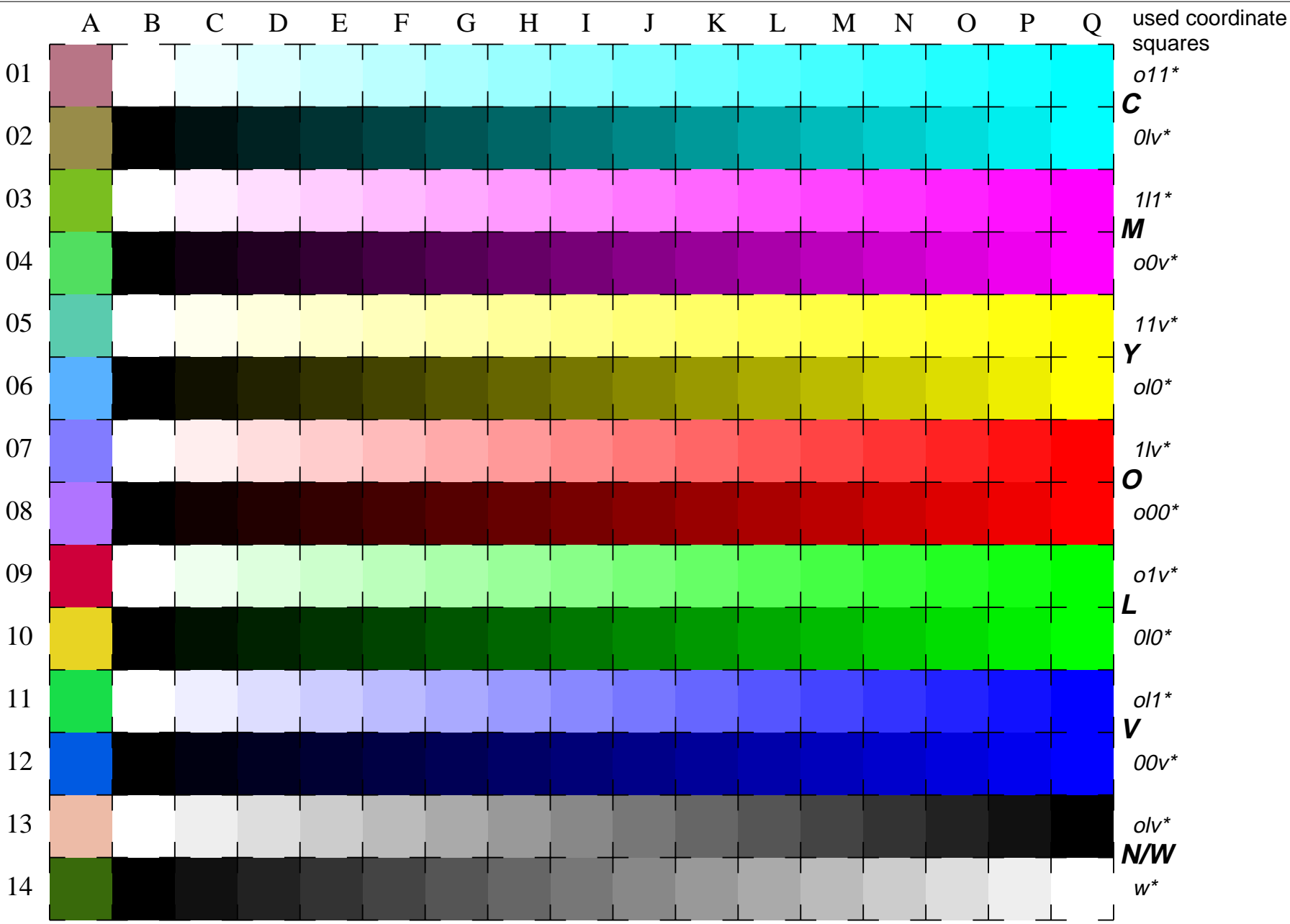
input(ORS18): *olv\* setrgbcolor*  
output(ORS18): *no change compared to input*





See for similar files: <http://www.ps.bam.de/ME21/ME21.HTM>  
 Information and Order: <http://www.ps.bam.de> Version 2.0, io=1,1

BAM registration: 20050101-ME21/10L/L21E01NP.PS/.PDF BAM material: code=tha4ta  
 application for measurement of monitor (Yr=2.5) and printer output

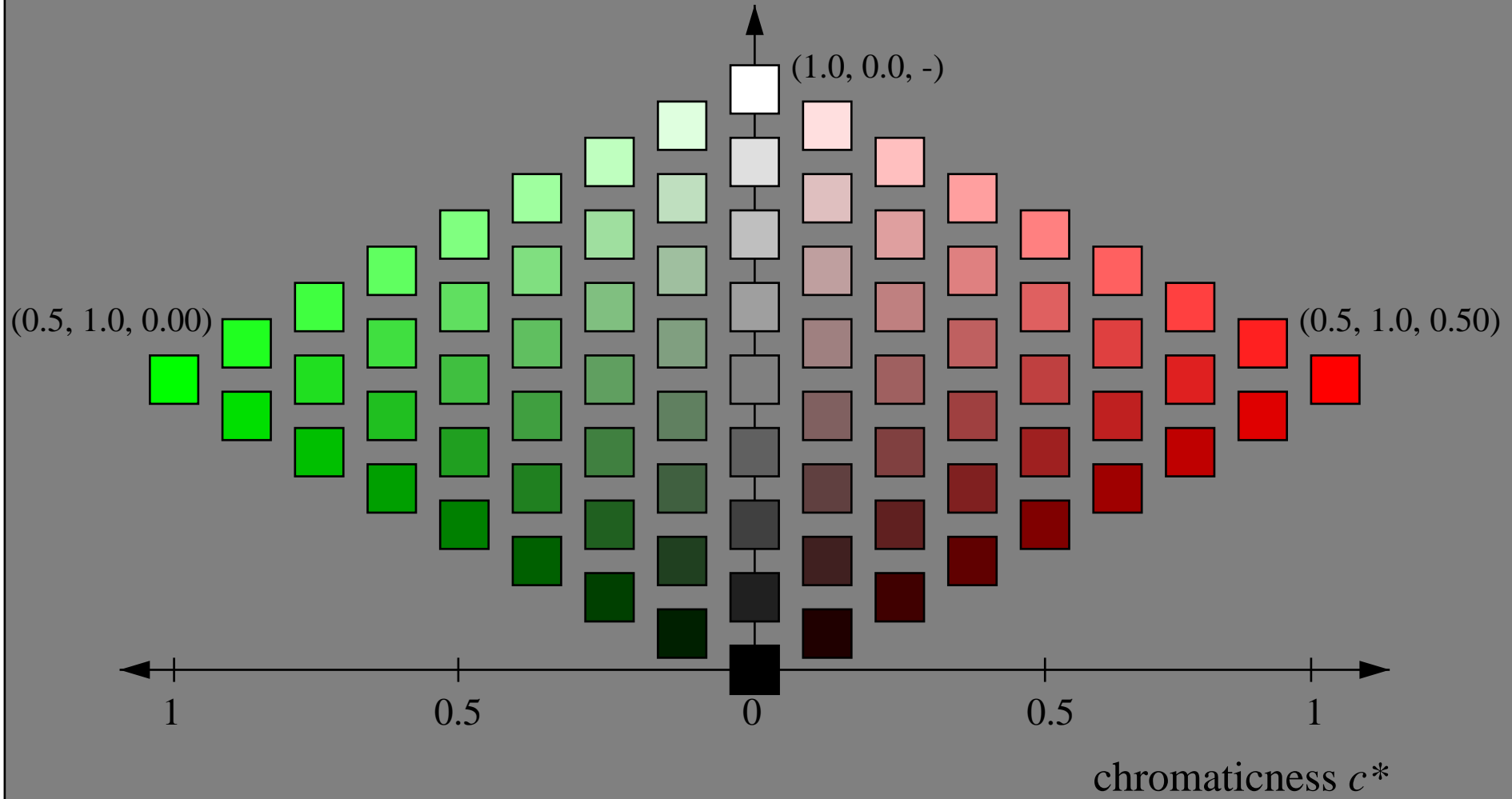


16 equidistant CIELAB steps: C-W, C-N, M-W, M-N, Y-W, Y-N, O-W, O-N, L-W, L-N, V-W, V-N, N-W (OLV), W-N and 14 CIE-test colours (left)



# Colorimetric System *lab\*tch*

triangle lightness  $t^*$

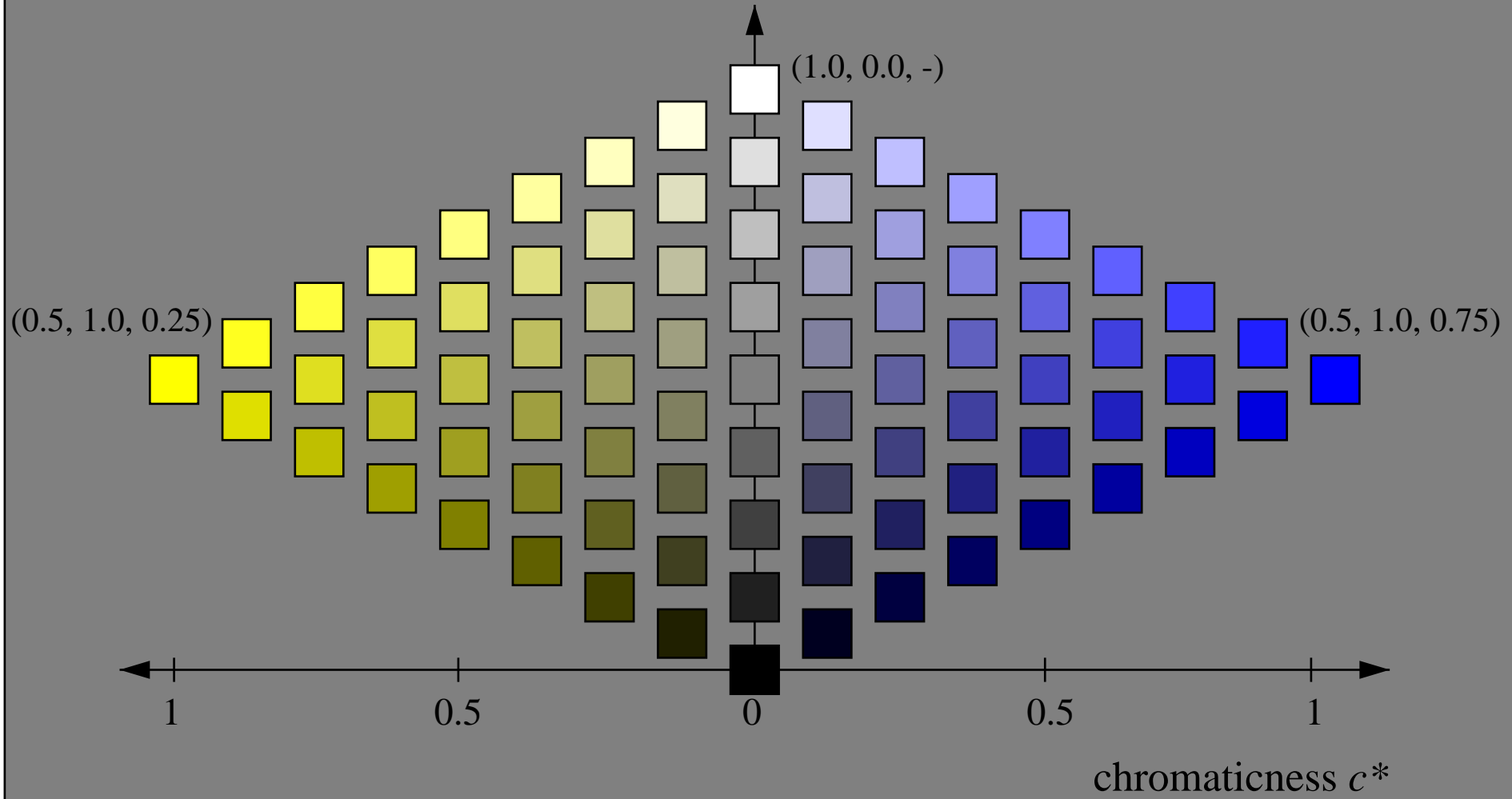


See for similar files: <http://www.ps.bam.de/ME21/ME21.HTM>  
Information and Order: <http://www.ps.bam.de> Version 2.0, io=1,1

BAM registration: 20050101-ME21/10L/L21E02NP.PS.PDF BAM material: code=tha4ta  
application for measurement of monitor (Yr=2.5) and printer output

# Colorimetric System *lab\*tch*

triangle lightness  $t^*$



See for similar files: <http://www.ps.bam.de/ME21/ME21.HTM>  
Information and Order: <http://www.ps.bam.de> Version 2.0, io=1,1

BAM registration: 20050101-ME21/10L/L21E03NP.PS.PDF BAM material: code=rha4ta  
application for measurement of monitor (Yr=2.5) and printer output