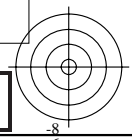
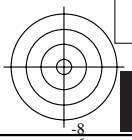
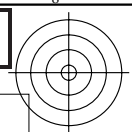
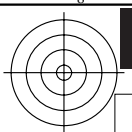


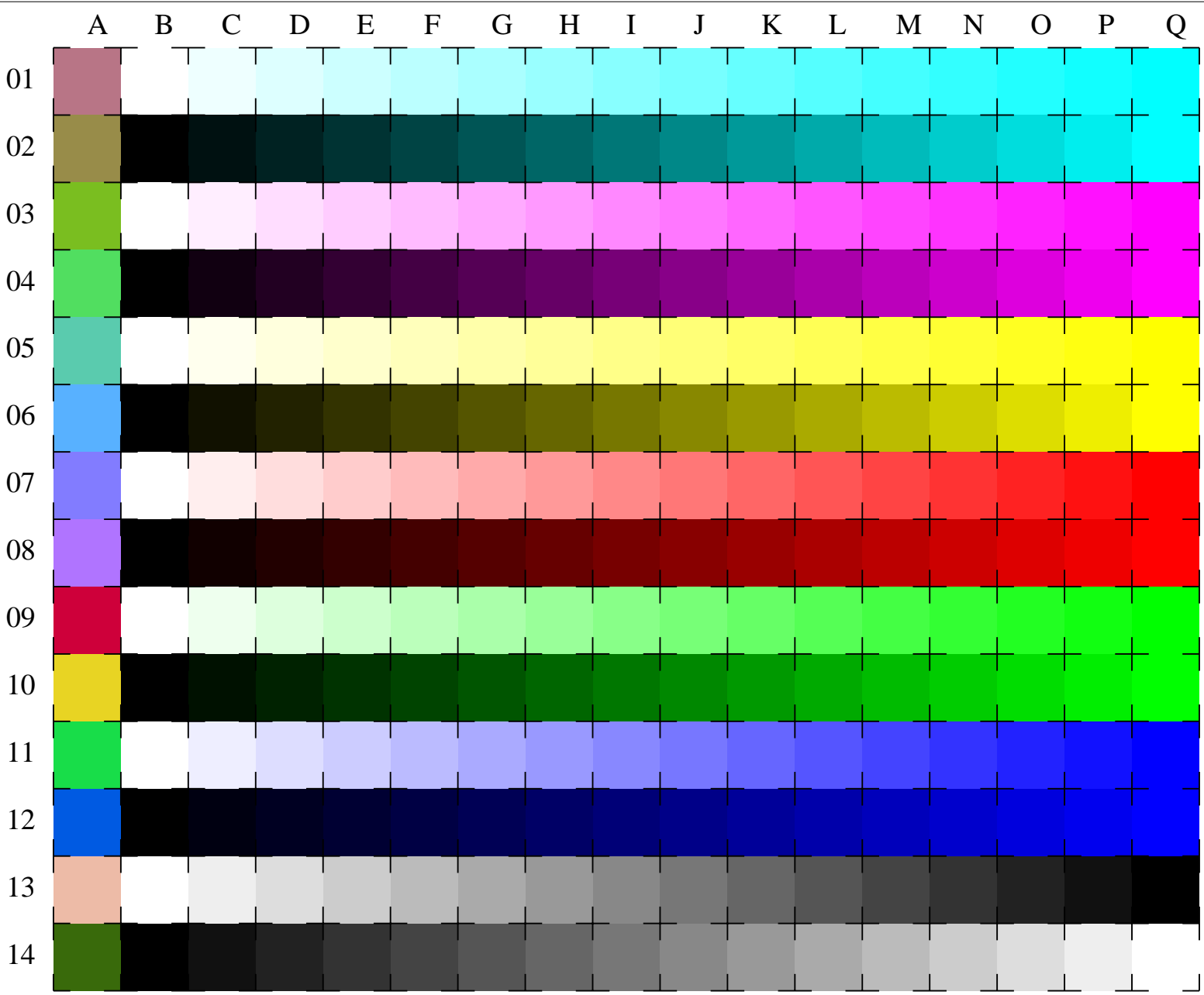
9x9x9 colour cube and colour tinted grey scales, hue circle with maximum chromaticness and W-CMY, OLV-N

Test chart ME21: 9x9x9 colour cube and grey scales
Hue circle and colour series W-CMY, OLV-N

input(ORS18): *olv* setrgbcolor*
output(ORS18): *no change compared to input*



See for similar files: <http://www.ps.bam.de/ME21/ME21.HTM>
Information and Order: <http://www.ps.bam.de> Version 2.0, io=1,1



used coordinate squares

*o11**

C
*0lv**

*111**

M
*o0v**

*11v**

Y
*o10**

*1lv**

O
*o00**

*o1v**

L
*o10**

*o11**

V
*o0v**

*olv**

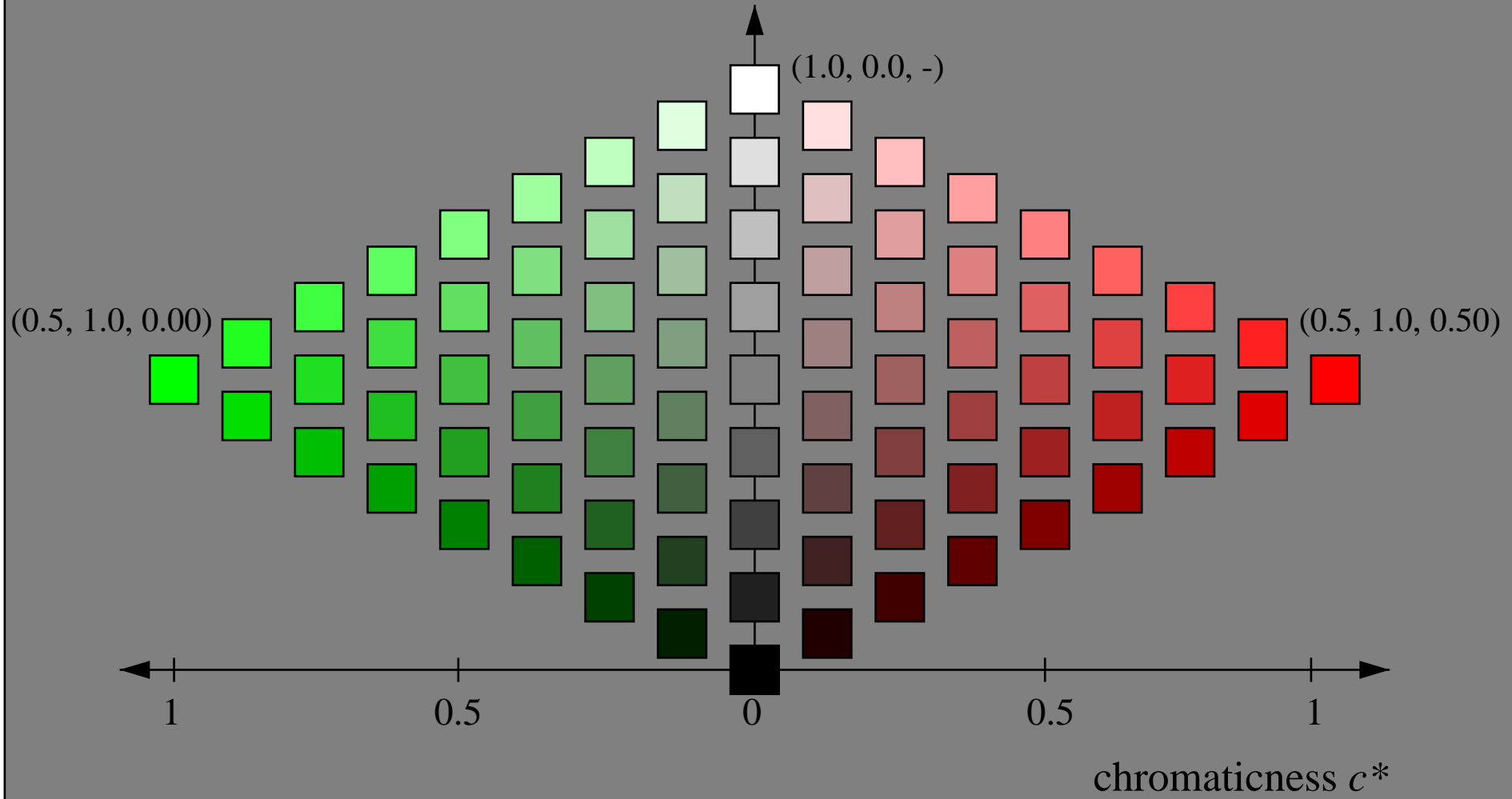
N/W
*w**

16 equidistant CIELAB steps: C-W, C-N, M-W, M-N, Y-W, Y-N, O-W, O-N, L-W, L-N, V-W, V-N, N-W (OLV), W-N and 14 CIE-test colours (left)

BAM registration: 20050101-ME21/10L/L21E01NP.PS/.PDF BAM material: code=tha4ta
application for measurement of monitor (Yr=2.5) and printer output

Colorimetric System *lab*tch*

triangle lightness t^*

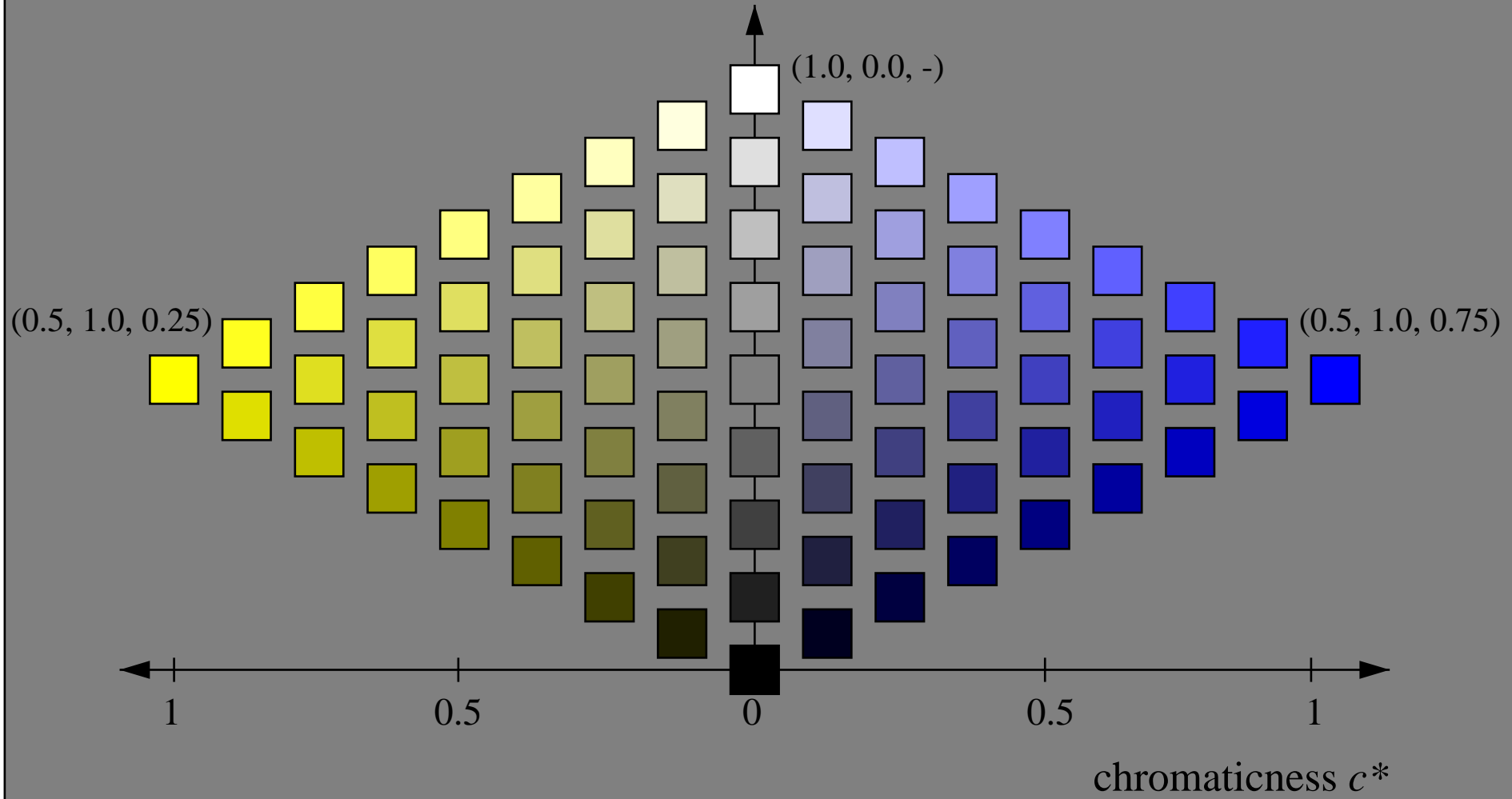


See for similar files: <http://www.ps.bam.de/ME21/ME21.HTM>
Information and Order: <http://www.ps.bam.de> Version 2.0, io=1,1

BAM registration: 20050101-ME21/10L/L21E02NP.PS.PDF BAM material: code=rha4ta
application for measurement of monitor (Yr=2.5) and printer output

Colorimetric System *lab*tch*

triangle lightness t^*



See for similar files: <http://www.ps.bam.de/ME21/ME21.HTM>
Information and Order: <http://www.ps.bam.de> Version 2.0, io=1,1

BAM registration: 20050101-ME21/10L/L21E03NP.PS.PDF BAM material: code=rha4ta
application for measurement of monitor (Yr=2.5) and printer output