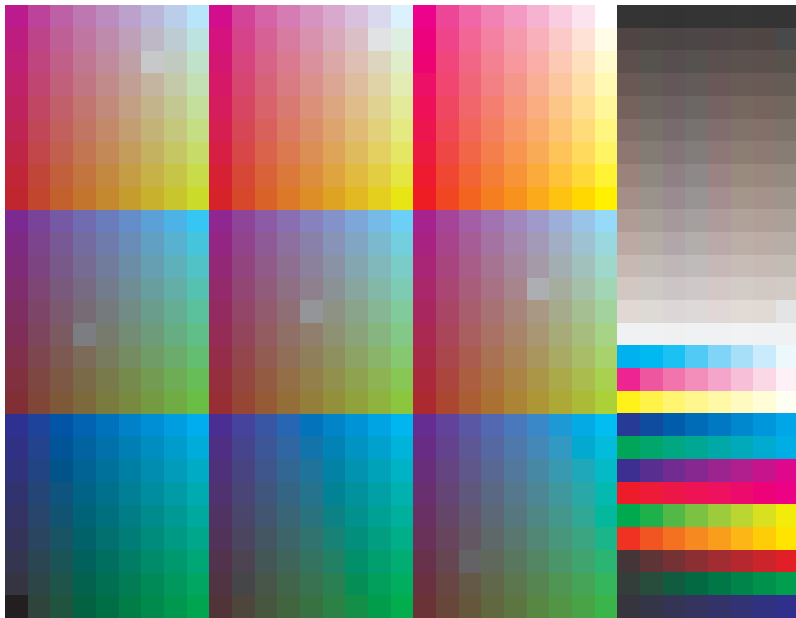


See for similar files: <http://www.ps.bam.de/ME21/ME21.HTM>
Information and Order: <http://www.ps.bam.de> Version 2.0, io=1,0; iORS; oORS, CIELAB

BAM registration: 20050101-ME21/L21E00F1.PS/.TXT
application for measurement of monitor (Yr=Z,S) and printer output

BAM material: code=thata



9x9x9 colour cube and colour tinted grey scales, hue circle with maximum chromaticness and $W-CMY, OLV-N$

Test chart ME21: 9x9x9 colour cube and grey scales
Hue circle and colour series $W-CMY, OLV-N$

input(ORS18): $olv^* setrgbcolor$
output(ORS18): $cmY0^*/1000n^* setcmykcolor$

