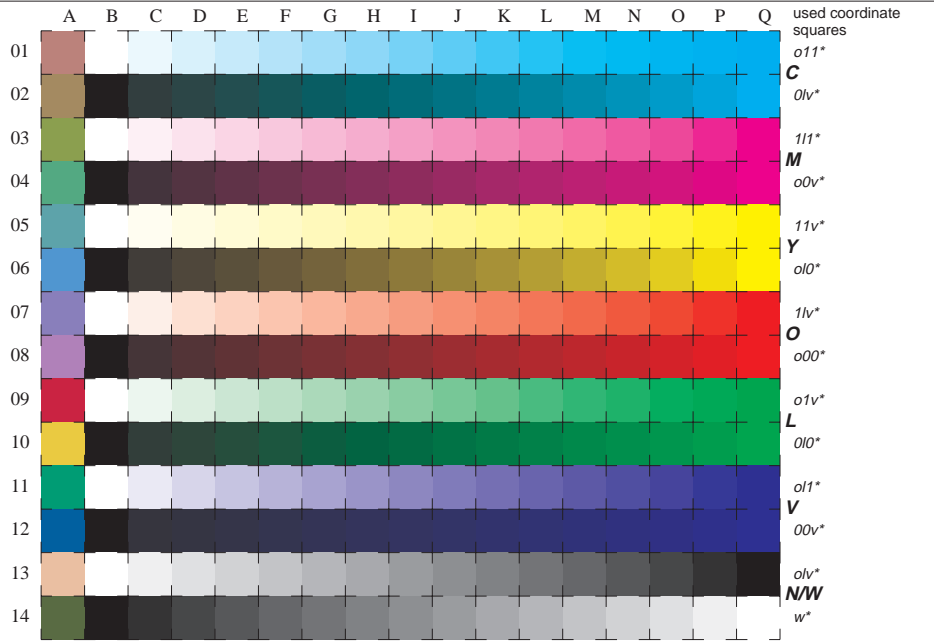


See for similar files: <http://www.ps.bam.de/ME21/ME21.HTM>
 Information and Order: <http://www.ps.bam.de> Version 2.0, io=1,0; iORS; oORS; CIELAB

BAM registration: 20050101-ME21/L21E00F2.PS/.TXT BAM material: code=thata
 application for measurement of monitor (Yr=2.5) and printer output



16 equidistant CIELAB steps: C-W, C-N, M-W, M-N, Y-W, Y-N, O-W, O-N, L-W, L-N, V-W, V-N, N-W (OLV), W-N and 14 CIE-test colours (left)

Test chart ME21: 16 CIELAB steps of ISO/IEC 15775 input(ORS18): $olv^* \text{ setrgbcolor}$
 Chromatic-White, Chromatic-Black, Black-White output(ORS18): $cmy0^*/1000n^* \text{ setcmykcolor}$