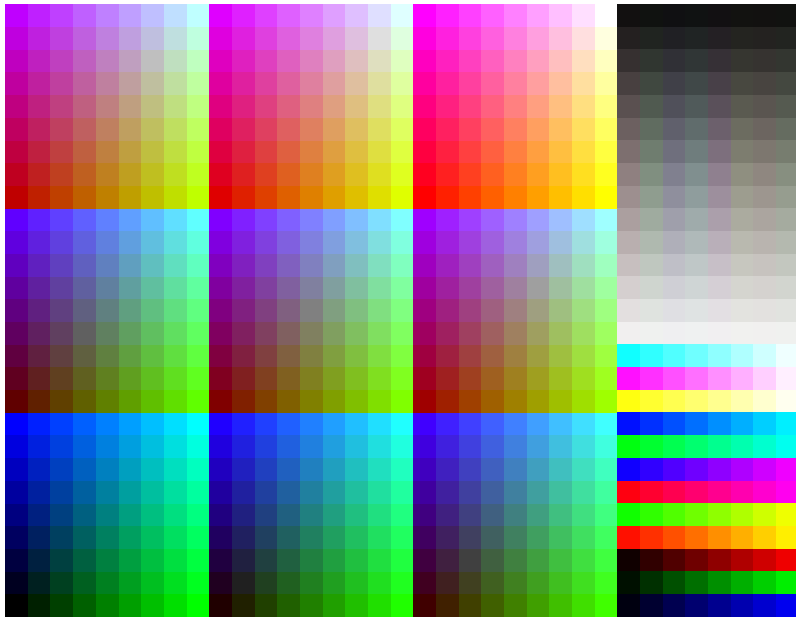


See for similar files: <http://www.ps.bam.de/ME21/ME21.HTM>
Information and Order: <http://www.ps.bam.de> Version 2.0, io=1,1

BAM registration: 20050101-ME21/L21E00N1.PS/.TXT
application for measurement of monitor (Y1=Z.5) and printer output

BAM material: code=thata



9x9x9 colour cube and colour tinted grey scales, hue circle with maximum chromaticness and W-CMY, OLV-N

Test chart ME21: 9x9x9 colour cube and grey scales
Hue circle and colour series W-CMY, OLV-N

input(ORS18): *olv* setrgbcolor*
output(ORS18): *no change compared to input*