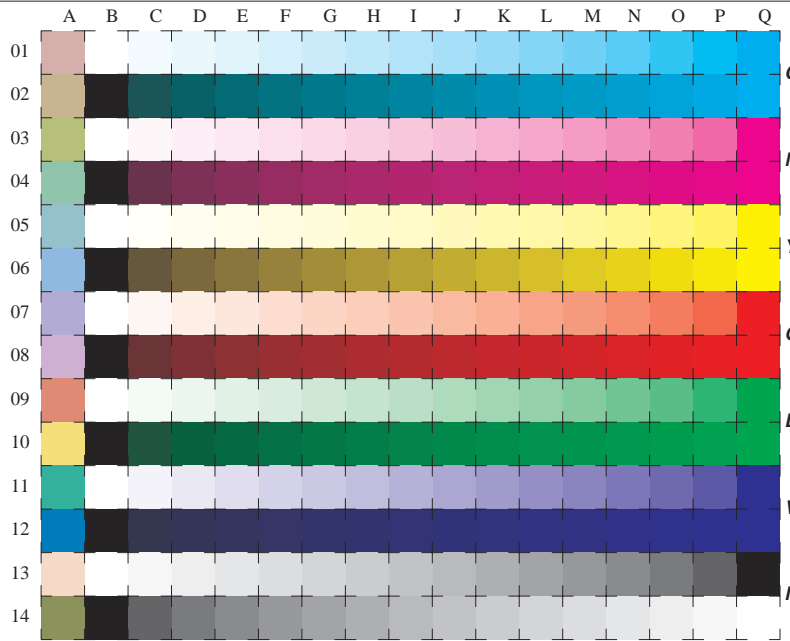


See for similar files: <http://www.ps.bam.de/ME21/ME21.HTM>
 Information and Order: <http://www.ps.bam.de> Version 2.0, io=1,0; iORS; oORS; CIELAB



used coordinate squares
 011*
 01v*
 111*
 00v*
 11v*
 Y
 010*
 11v*
 O
 000*
 01v*
 L
 010*
 011*
 V
 00v*
 01v*
 N/W
 w*

16 equidistant CIELAB steps: C-W, C-N, M-W, M-N, Y-W, Y-N, O-W, O-N, L-W, L-N, V-W, V-N, N-W (OLV), W-N and 14 CIE-test colours (left)

Test chart ME21: 16 CIELAB steps of ISO/IEC 15775 input(ORS18): *olv* setrgbcolor*
 Chromatic-White, Chromatic-Black, Black-White output(ORS18): *cmy0*/000n* setcmykcolor*

BAM registration: 20050101-ME21/10Q/Q21E00F2.PS/.TXT BAM material: code=thata
 application for measurement of monitor (Y1=2.5) and printer output