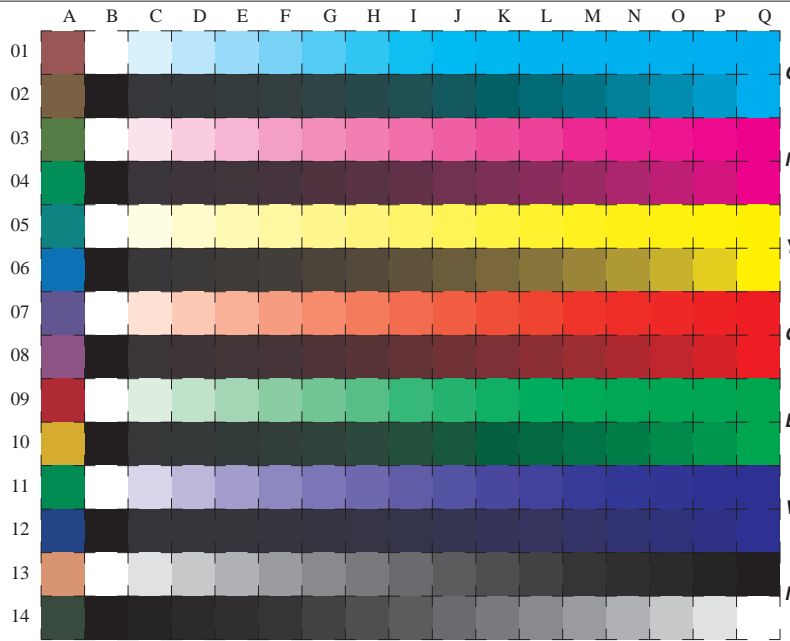


See for similar files: <http://www.ps.bam.de/ME21/ME21.HTM>
 Information and Order: <http://www.ps.bam.de> Version 2.0, io=1,0; iORS; oORS; CIELAB



used coordinate squares
 011*
C
 0lv*
 11l*
M
 00v*
 11v*
Y
 0l0*
 1lv*
O
 000*
 01v*
L
 0l0*
 01l*
V
 00v*
 0lv*
N/W
 w*

16 equidistant CIELAB steps: C-W, C-N, M-W, M-N, Y-W, Y-N, O-W, O-N, L-W, L-N, V-W, V-N, N-W (OLV), W-N and 14 CIE-test colours (left)

Test chart ME21: 16 CIELAB steps of ISO/IEC 15775 input(ORS18): *olv* setrgbcolor*
 Chromatic-White, Chromatic-Black, Black-White output(ORS18): *cmy0*/000n* setcmykcolor*

BAM registration: 20050101-ME21/10S/S21E00F2.PS/TXT BAM material: code=theta
 application for measurement of monitor (Y1=2,5) and printer output