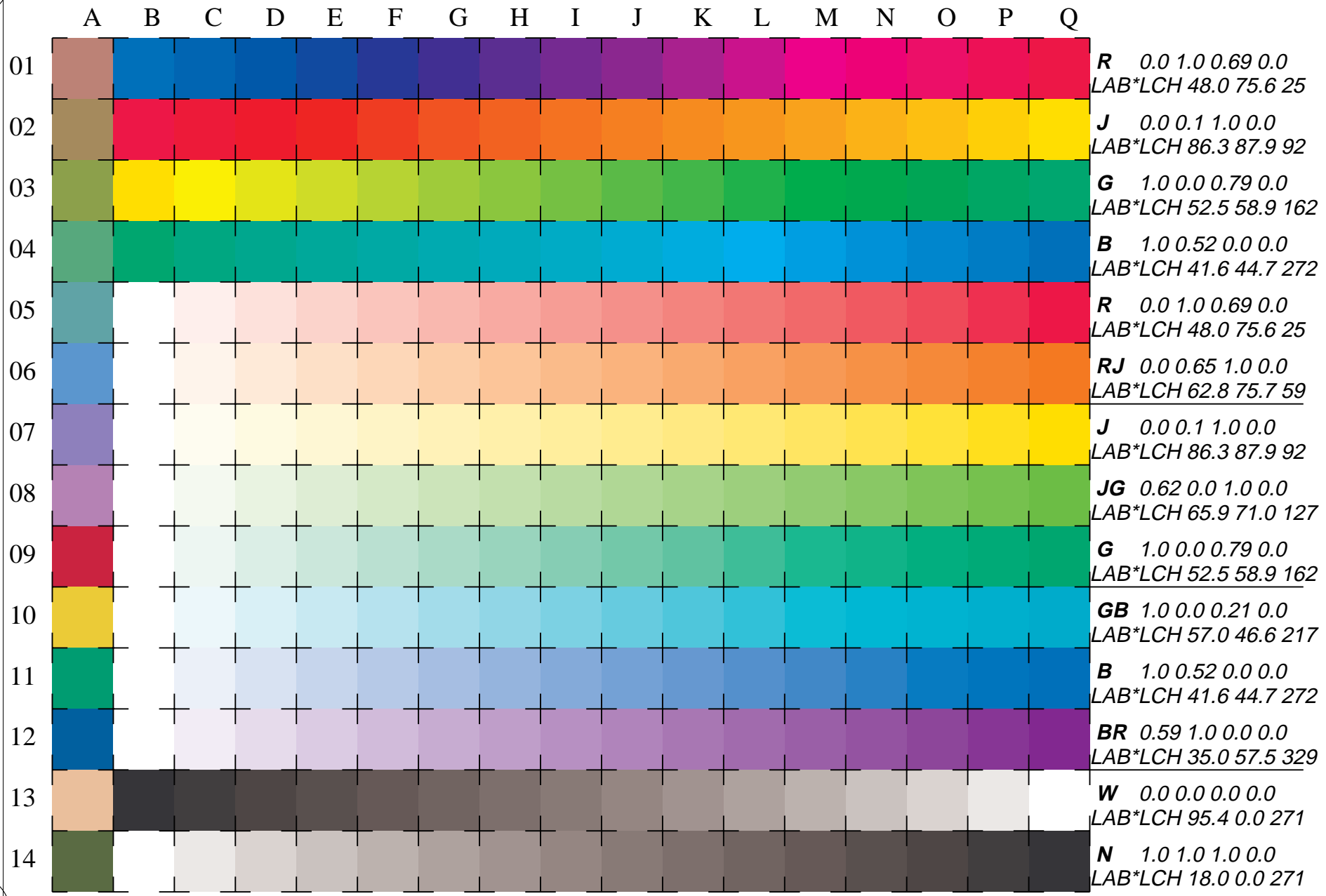


See for similar files: <http://www.ps.bam.de/ME94/>
 Technical information: <http://www.ps.bam.de> Version 2.1, io=1,1

BAM registration: 20050101-ME94/10L/L94E00NP.PS/.PDF
 application for measurement of printer or monitor systems

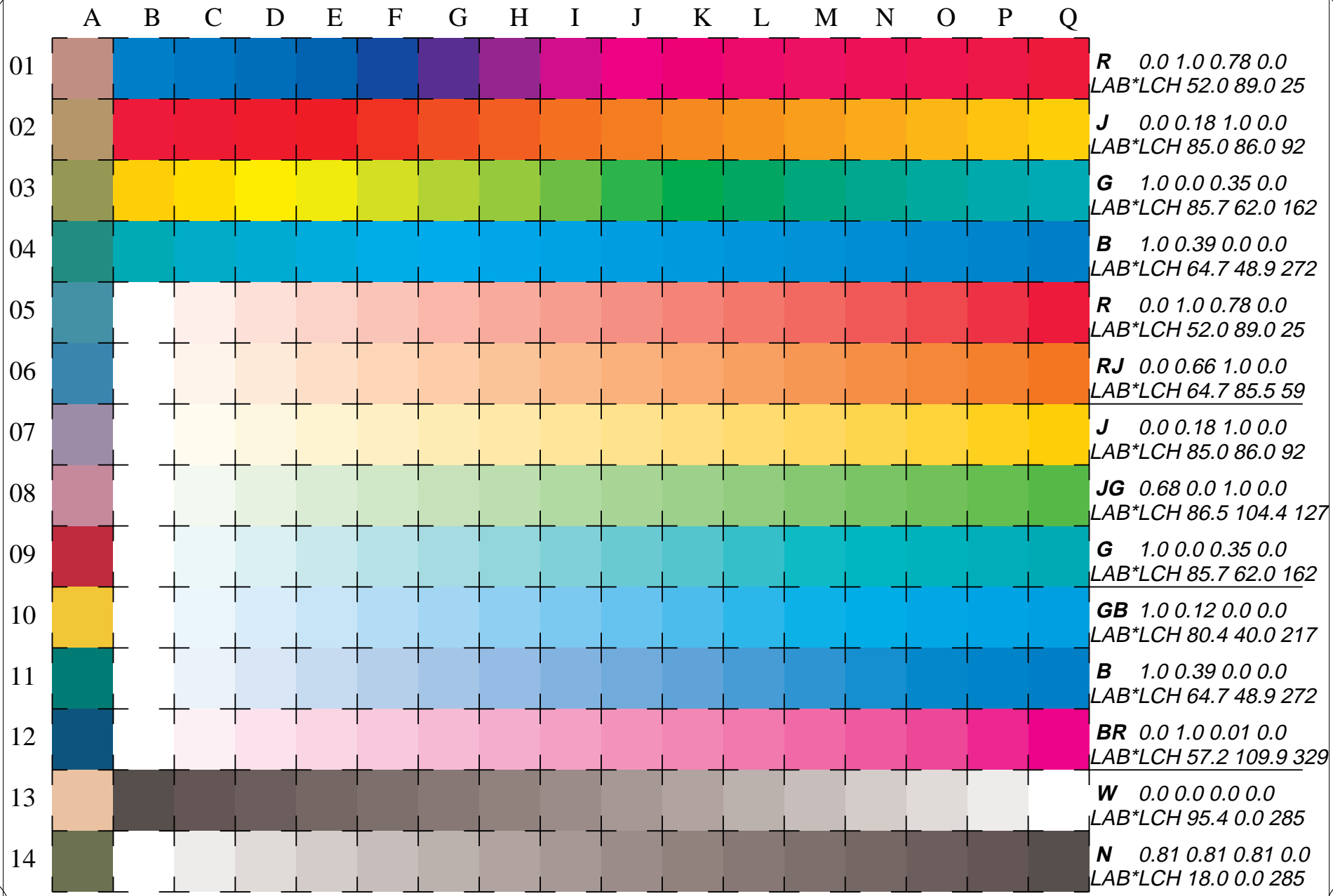
BAM material: code=rh4ta
 /ME94/ Form: 1/4, Serie: 1/1, Page: 1 Page count: 1



See for similar files: <http://www.ps.bam.de/ME94/>
 Technical information: <http://www.ps.bam.de> Version 2.1, io=1,1

BAM registration: 20050101-ME94/10L/L94E01NP.PS/.PDF
 application for measurement of printer or monitor systems

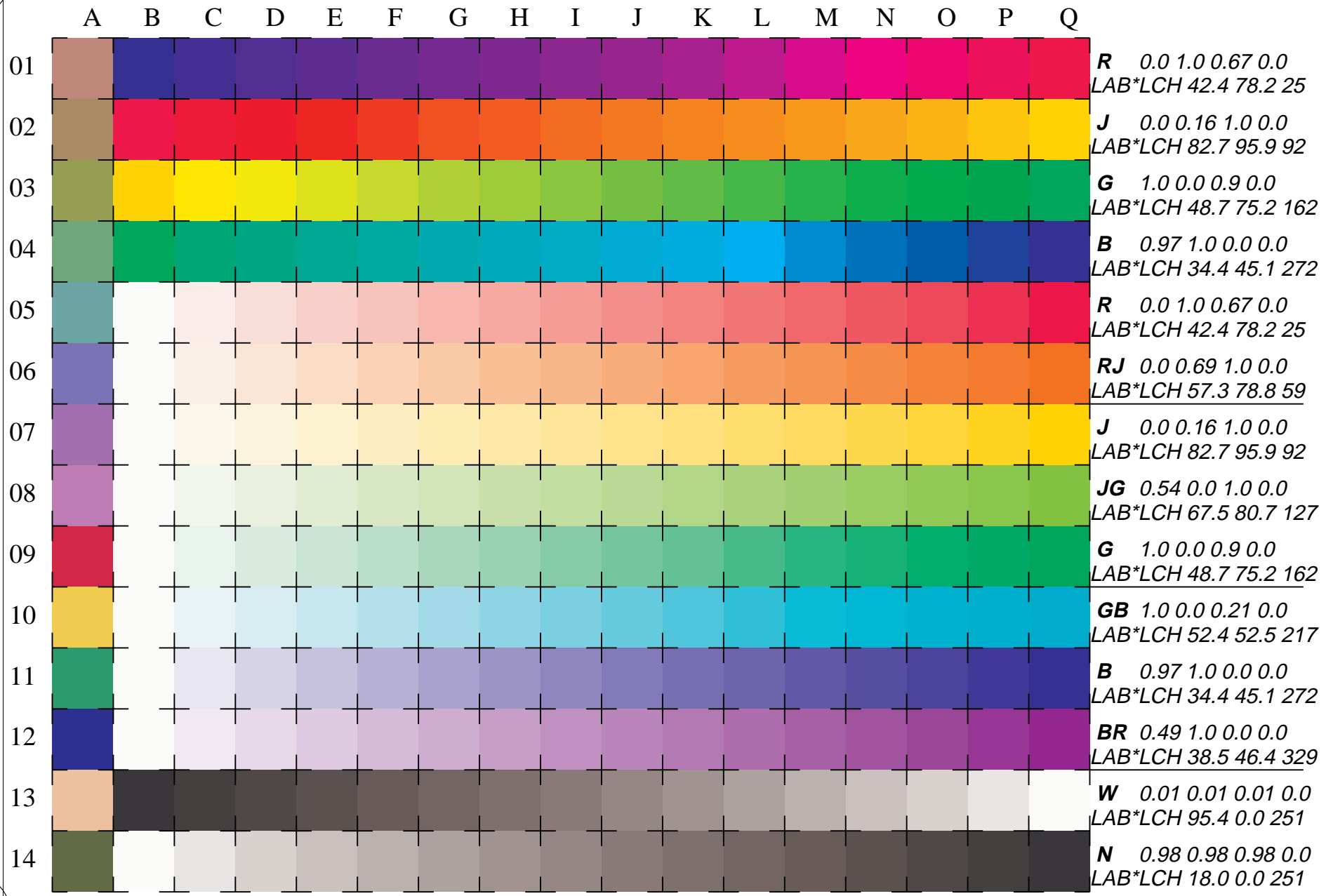
BAM material: code=rh4ta
 /ME94/ Form: 2/4, Serie: 1/1, Page: 2 Page count: 2



See for similar files: <http://www.ps.bam.de/ME94/>
 Technical information: <http://www.ps.bam.de> Version 2.1, io=1,1

BAM registration: 20050101-ME94/10L/L94E02NP.PS/.PDF
 application for measurement of printer or monitor systems

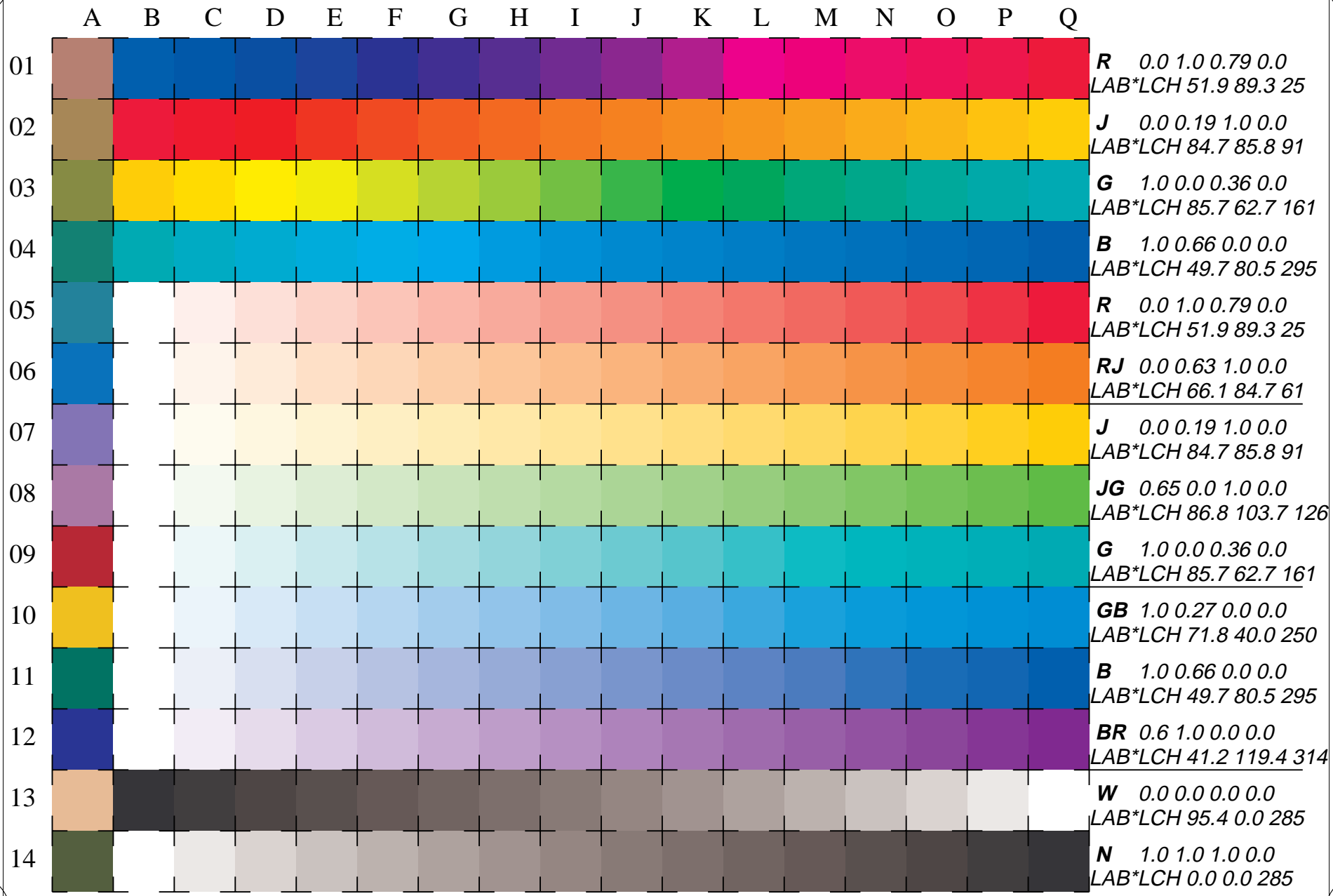
BAM material: code=rh4ta
 /ME94/ Form: 3/4, Serie: 1/1, Page: 3 Page count: 3



See for similar files: <http://www.ps.bam.de/ME94/>
 Technical information: <http://www.ps.bam.de> Version 2.1, io=1,1

BAM registration: 20050101-ME94/10L/L94E03NP.PS/.PDF
 application for measurement of printer or monitor systems

BAM material: code=rh4ta
 /ME94/ Form: 4/4, Serie: 1/1, Page: 4, Page count: 4



16 equidistant CIELAB steps in *cmy0*TLS18* for colour series B-R, R-J, J-G, G-B, W-R, W-RJ, W-J, W-JG, W-G, W-GB, W-B, W-BR, W-R, W-N, N-W and 14 CIE-test colours (left)

Test chart ME94: Elementary colours RJGB (4 CIE + intp.) input: *cmy0*TLS18 setcmykcolor*
 Hue circle and white – chromatic, CIE-test colours, *LAB*LCH* output: no change compared to input