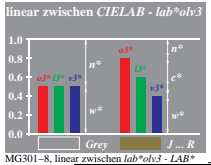
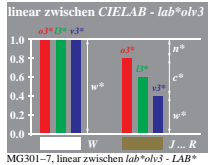
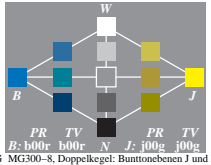
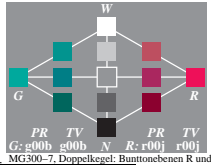
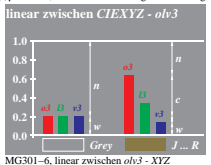
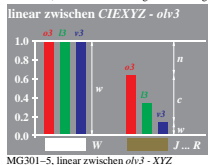
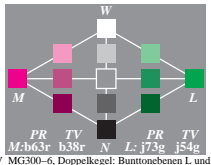
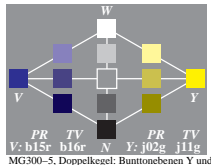
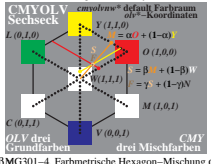
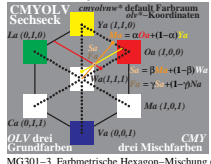
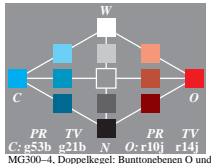
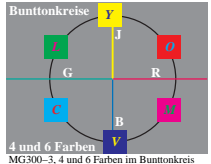
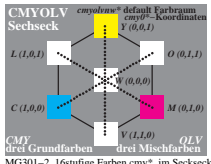
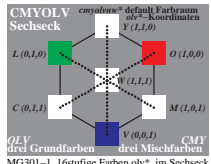
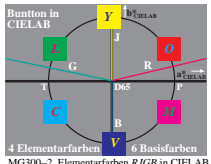
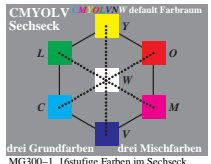


Siehe ähnliche Dateien: <http://www.ps.bam.de/MG30/>  
 Technische Information: <http://www.ps.bam.de> Version 2.1, io=1.1



BAM-Prüfvorlage Nr. MG30; Farbtransfer und Workflow  
 Doppelkegel, Bunttonebenen, Geräte-Koordinaten olv\*, cmy0\*

input: cmy0\* setmykcolor  
 output: no change compared to input

BAM-Registrierung: 20040901-MG30/L30G00N1.PS/TXT  
 Anwendung für Messung von Drucker- oder Monitorssystemen  
 (MG30) Form: 12, Seite: 11, Seite: 1  
 Sekretariat 1