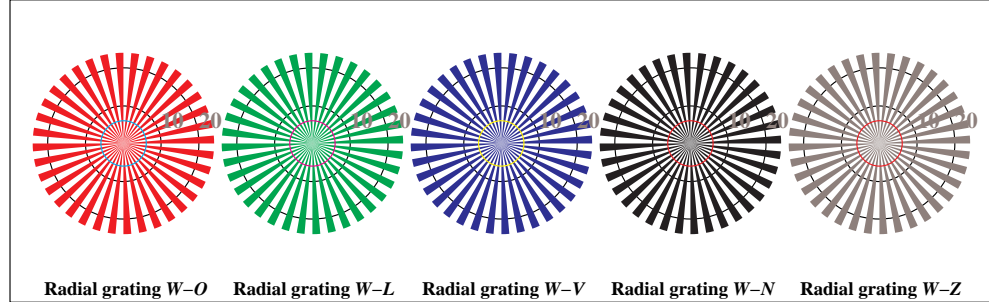


image pixel: 192 x 128  
 384 x 256  
 768 x 512  
 1536 x 1024  
 3072 x 2048



XE730-3, Picture D1: Flower motif, 14 CIE-test colours and 2 + 16 grey steps (nf); PS operators *settransfer*, *4 colorimage*

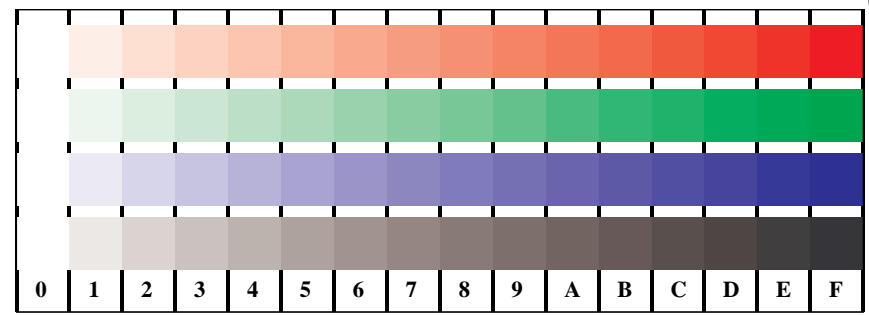


XE730-5, Picture D2: Radial gratings *W-O*, *W-L*, *W-V*, *W-N*, and *W-Z*; PS operator *cmY0\* setcmkcolor* (only)

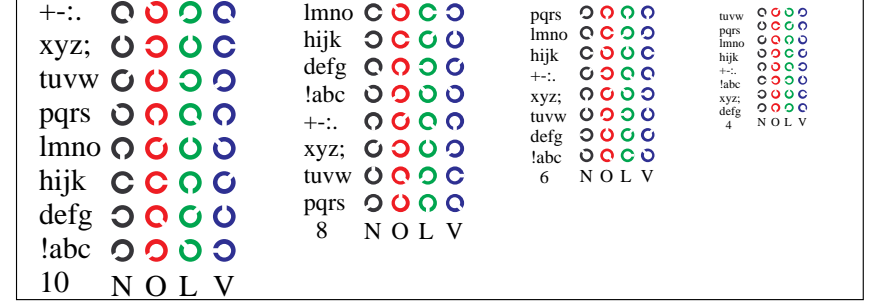


XE730-7, Picture D3: 14 CIE-test colours and 2 + 16 grey steps; Use of PS operator *cmY0\* setcmkcolor* (only)

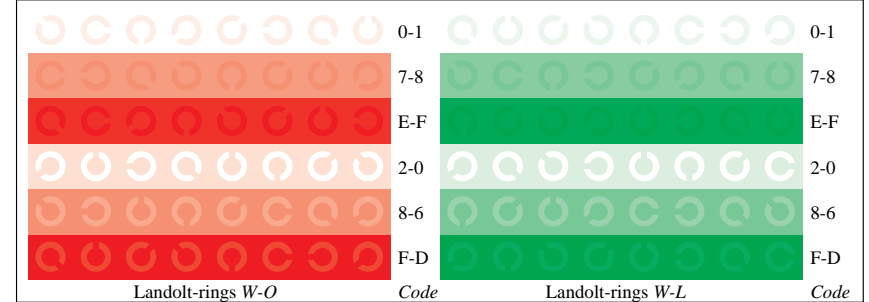
BAM-test chart XE73; FRS06 & FRS06 ISO/IEC 15775 and input: *cmY0\* setcmkcolor* (only)  
 Fig. D1 to D7 of ISO/IEC-test chart 4; ISO/IEC TR 24705; output: no change compared to input



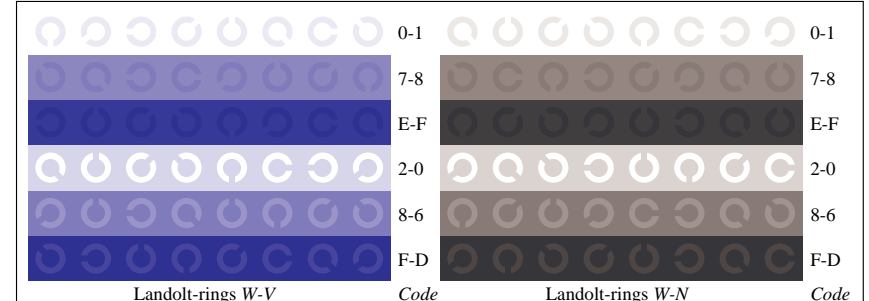
XE731-1, Picture D4: 16 equidistant steps *W-O*, *W-L*, *W-V* and *W-N*; Use of PS operator *cmY0\* setcmkcolor* (only)



XE731-3, Picture D5: Script and Landolt-rings *N*, *O*, *L* and *V*; Use of PS operator *cmY0\* setcmkcolor* (only)



XE731-5, Picture D6: Landolt-rings *W-O* and *W-L*; Use of PS operator *cmY0\* setcmkcolor* (only)



XE731-7, Picture D7: Landolt-rings *W-V* and *W-N*; Use of PS operator *cmY0\* setcmkcolor* (only)