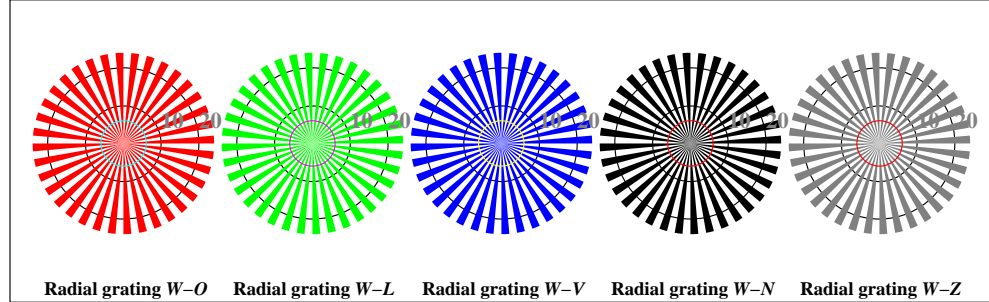


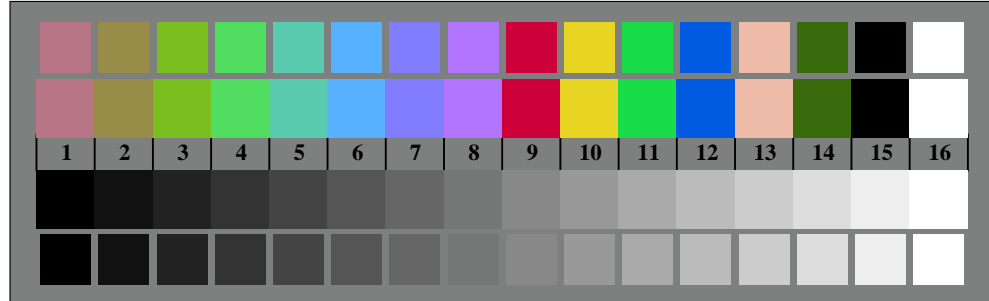
image pixel: 192 x 128
 384 x 256
 768 x 512
 1536 x 1024
 3072 x 2048



XE740-3, Picture D1: Flower motif, 14 CIE-test colours and 2 + 16 grey steps (nf); PS operators *settransfer*, *3 colorimage*

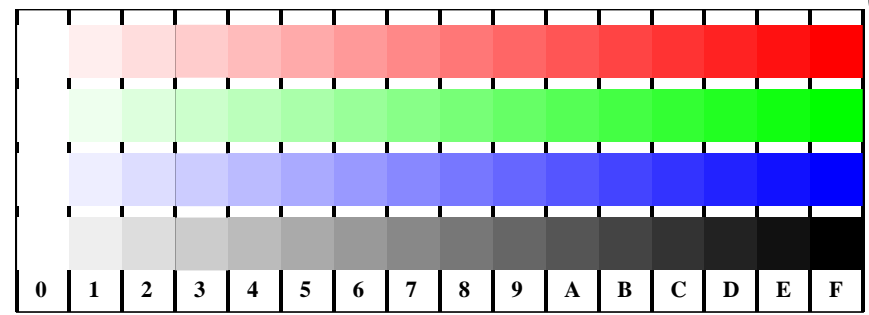


XE740-5, Picture D2: Radial gratings *W-O*, *W-L*, *W-V*, *W-N*, and *W-Z*; PS operator *olv* setrgbcolor* (only)

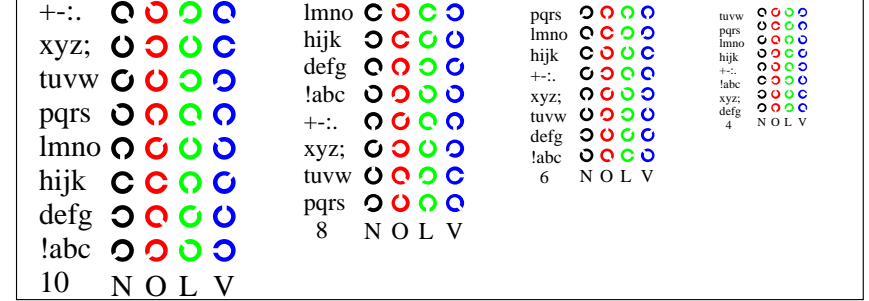


XE740-7, Picture D3: 14 CIE-test colours and 2 + 16 grey steps; Use of PS operator *olv* setrgbcolor* (only)

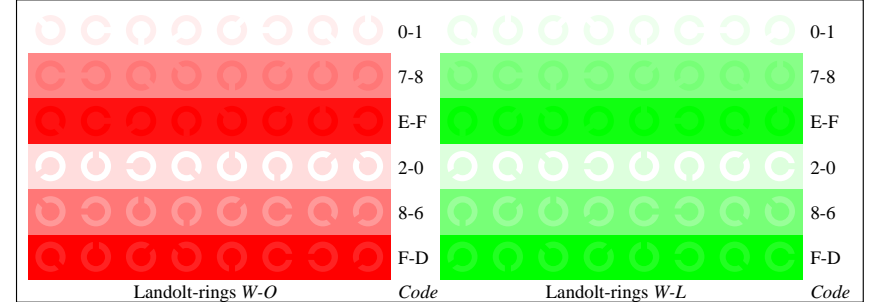
BAM-test chart XE74; FRS06 & FRS06 ISO/IEC 15775 and input: *olv* setrgbcolor* (only)
 Fig. D1 to D7 of ISO/IEC-test chart 4; ISO/IEC TR 24705; output: no change compared to input



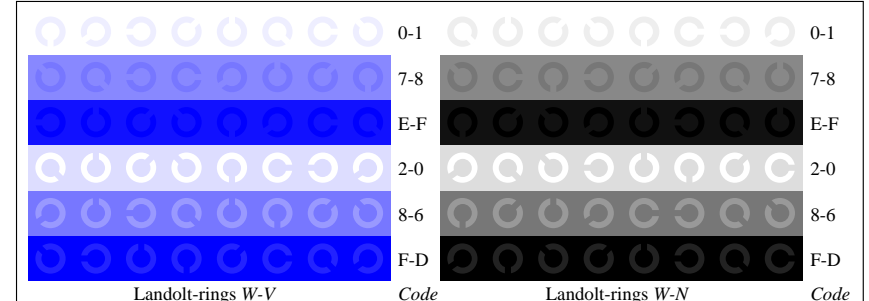
XE741-1, Picture D4: 16 equidistant steps *W-O*, *W-L*, *W-V* and *W-N*; Use of PS operator *olv* setrgbcolor* (only)



XE741-3, Picture D5: Script and Landolt-rings *N*, *O*, *L* and *V*; Use of PS operator *olv* setrgbcolor* (only)



XE741-5, Picture D6: Landolt-rings *W-O* and *W-L*; Use of PS operator *olv* setrgbcolor* (only)



XE741-7, Picture D7: Landolt-rings *W-V* and *W-N*; Use of PS operator *olv* setrgbcolor* (only)