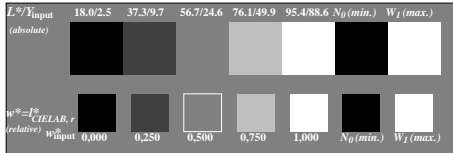
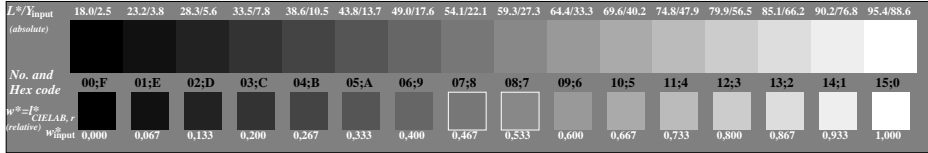


XE770-3, Picture C1: Radial gratings (Siemens-stars) N-W, W-N, N-Z and W-Z; PS operator: *w*lin 1.0 exp setgray*

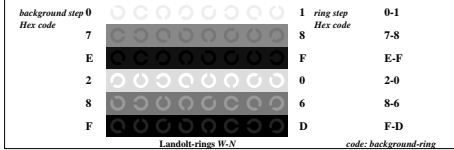


XE770-5, Picture C2: 5 visual equidistant L^* -grey steps + $N_0 + W_1$; PS operator: *w*lin 1.0 exp setgray*

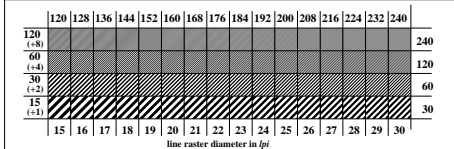


XE770-7, Picture C3: 16 visual equidistant L^* -grey steps; PS operator: *w*lin 1.0 exp setgray*

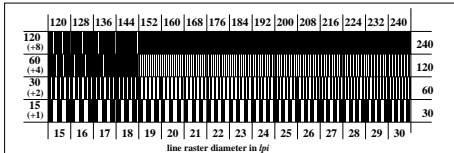
BAM-test chart XE77; FRS06 & FRS06 ISO/IEC 15775 and input: *w* setgray*
 Fig. C1 to C6 of ISO/IEC-test chart 3; ISO/IEC TR 24705; output: no change compared to input



XE771-1, Picture C4: Landolt-rings W-N; PS operator: *w*lin 1.0 exp setgray*



XE771-3, Picture C5: Line raster under 45 (or 135); PS operator: *w*lin 1.0 exp setgray*



XE771-5, Picture C6: Line raster under 90 (or 0); PS operator: *w*lin 1.0 exp setgray*