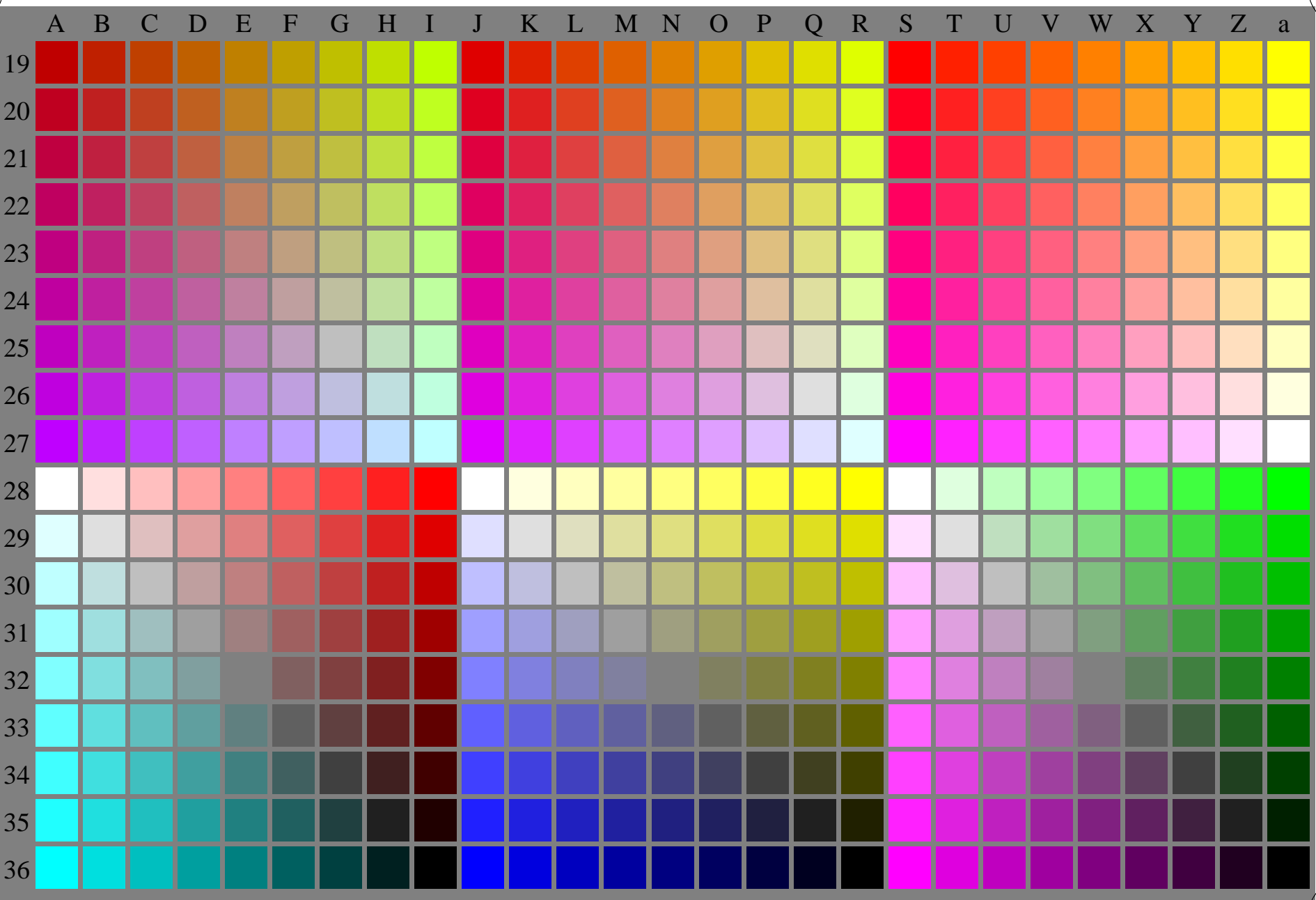
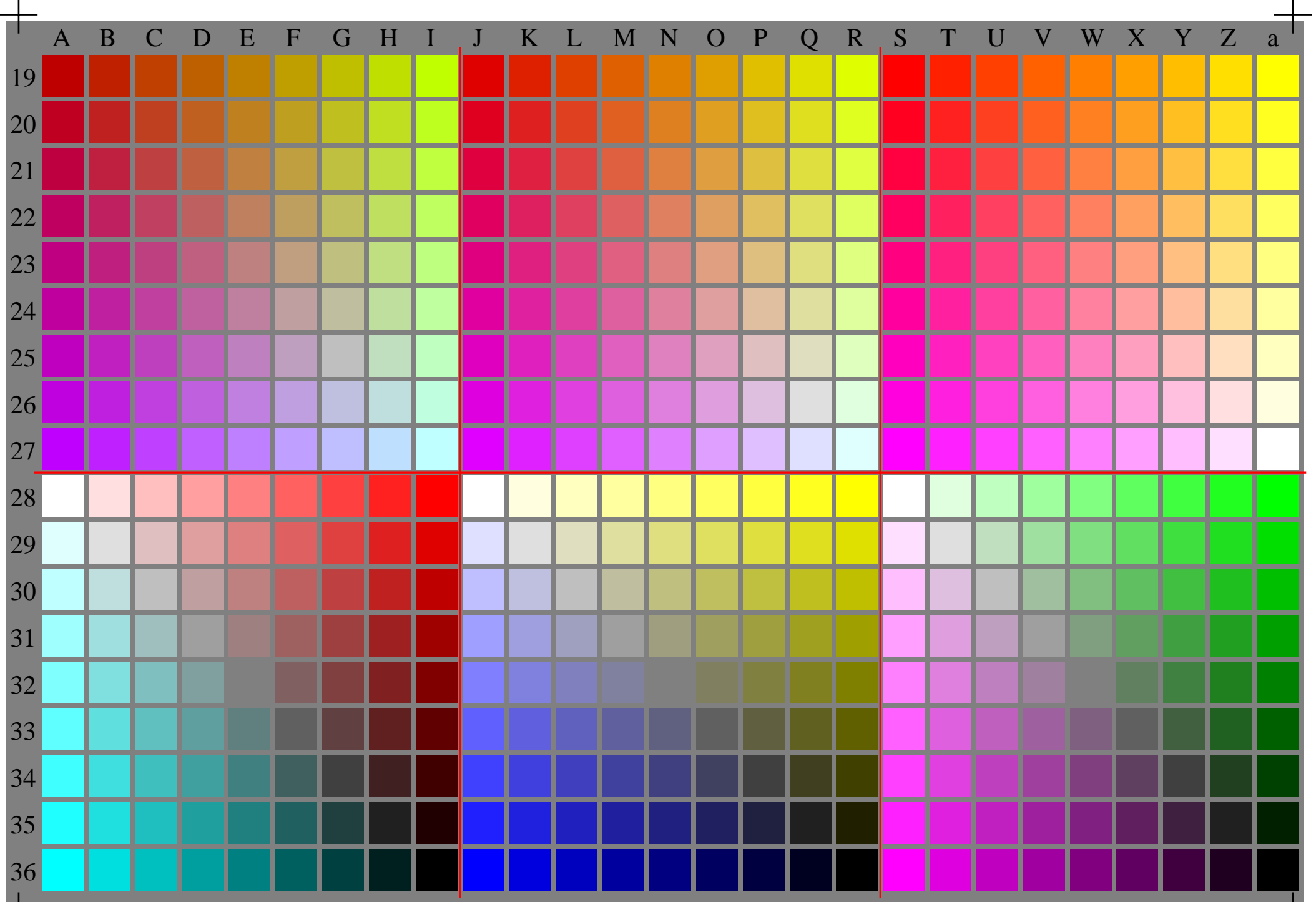


See for similar files: <http://www.ps.bam.de/YE12/>
Technical information: <http://www.ps.bam.de> Version 2.1, io=1,1

BAM registration: 20070101-YE12/10L/L12E00NA.PS/.TXT
application for output of monitor, data projector, or printer systems
BAM material: code=rh4ta



YE120-7N, Test chart with 27x18=486 colours and digital equidistant 9 step colour scales; compare ISO/IEC 15775; rgb colour data, patch size and grey layout: 8mm x 8mm, 250mm x 170mm, Page 1/3



YE120-7N, Test chart with 27x18=486 colours and digital equidistant 9 step colour scales; compare ISO/IEC 15775; rgb colour data, patch size and grey layout: 8,8mm x 8,8mm, 275mm x 187mm, Page 2/3

	A	B	C	D	E	F	G	H	I	J	K	L	M	N	O	P	Q	R	S	T	U	V	W	X	Y	Z	a
19	486 A19 0.75 0.0 0.0	495 B19 0.75 0.125 0.0	504 C19 0.75 0.25 0.0	513 D19 0.75 0.375 0.0	522 E19 0.75 0.5 0.0	531 F19 0.75 0.625 0.0	540 G19 0.75 0.75 0.0	549 H19 0.75 0.875 0.0	558 I19 0.75 1.0 0.0	567 J19 0.875 0.0 0.0	576 K19 0.875 0.125 0.0	585 L19 0.875 0.25 0.0	594 M19 0.875 0.375 0.0	603 N19 0.875 0.5 0.0	612 O19 0.875 0.625 0.0	621 P19 0.875 0.75 0.0	630 Q19 0.875 0.875 0.0	639 R19 0.875 1.0 0.0	648 S19 1.0 0.0 0.0	657 T19 1.0 0.125 0.0	666 U19 1.0 0.25 0.0	675 V19 1.0 0.375 0.0	684 W19 1.0 0.5 0.0	693 X19 1.0 0.625 0.0	702 Y19 1.0 0.75 0.0	711 Z19 1.0 0.875 0.0	720 a19 1.0 1.0 0.0
20	487 A20 0.75 0.0 0.125	496 B20 0.75 0.125 0.125	505 C20 0.75 0.25 0.125	514 D20 0.75 0.375 0.125	523 E20 0.75 0.5 0.125	532 F20 0.75 0.625 0.125	541 G20 0.75 0.75 0.125	550 H20 0.75 0.875 0.125	559 I20 0.75 1.0 0.125	568 J20 0.875 0.125 0.125	577 K20 0.875 0.125 0.125	586 L20 0.875 0.25 0.125	595 M20 0.875 0.375 0.125	604 N20 0.875 0.5 0.125	613 O20 0.875 0.625 0.125	622 P20 0.875 0.75 0.125	631 Q20 0.875 0.875 0.125	640 R20 0.875 1.0 0.125	649 S20 1.0 0.125 0.125	658 T20 1.0 0.125 0.125	667 U20 1.0 0.25 0.125	676 V20 1.0 0.375 0.125	685 W20 1.0 0.5 0.125	694 X20 1.0 0.625 0.125	703 Y20 1.0 0.75 0.125	712 Z20 1.0 0.875 0.125	721 a20 1.0 1.0 0.125
21	488 A21 0.75 0.0 0.25	497 B21 0.75 0.125 0.25	506 C21 0.75 0.25 0.25	515 D21 0.75 0.375 0.25	524 E21 0.75 0.5 0.25	533 F21 0.75 0.625 0.25	542 G21 0.75 0.75 0.25	551 H21 0.75 0.875 0.25	560 I21 0.75 1.0 0.25	569 J21 0.875 0.0 0.25	578 K21 0.875 0.125 0.25	587 L21 0.875 0.25 0.25	596 M21 0.875 0.375 0.25	605 N21 0.875 0.5 0.25	614 O21 0.875 0.625 0.25	623 P21 0.875 0.75 0.25	632 Q21 0.875 0.875 0.25	641 R21 0.875 1.0 0.25	650 S21 1.0 0.0 0.25	659 T21 1.0 0.125 0.25	668 U21 1.0 0.25 0.25	677 V21 1.0 0.375 0.25	686 W21 1.0 0.5 0.25	695 X21 1.0 0.625 0.25	704 Y21 1.0 0.75 0.25	713 Z21 1.0 0.875 0.25	722 a21 1.0 1.0 0.25
22	489 A22 0.75 0.0 0.375	498 B22 0.75 0.125 0.375	507 C22 0.75 0.25 0.375	516 D22 0.75 0.375 0.375	525 E22 0.75 0.5 0.375	534 F22 0.75 0.625 0.375	543 G22 0.75 0.75 0.375	552 H22 0.75 0.875 0.375	561 I22 0.75 1.0 0.375	570 J22 0.875 0.0 0.375	579 K22 0.875 0.125 0.375	588 L22 0.875 0.25 0.375	597 M22 0.875 0.375 0.375	606 N22 0.875 0.5 0.375	615 O22 0.875 0.625 0.375	624 P22 0.875 0.75 0.375	633 Q22 0.875 0.875 0.375	642 R22 0.875 1.0 0.375	651 S22 1.0 0.0 0.375	660 T22 1.0 0.125 0.375	669 U22 1.0 0.25 0.375	678 V22 1.0 0.375 0.375	687 W22 1.0 0.5 0.375	696 X22 1.0 0.625 0.375	705 Y22 1.0 0.75 0.375	714 Z22 1.0 0.875 0.375	723 a22 1.0 1.0 0.375
23	490 A23 0.75 0.0 0.5	499 B23 0.75 0.125 0.5	508 C23 0.75 0.25 0.5	517 D23 0.75 0.375 0.5	526 E23 0.75 0.5 0.5	535 F23 0.75 0.625 0.5	544 G23 0.75 0.75 0.5	553 H23 0.75 0.875 0.5	562 I23 0.75 1.0 0.5	571 J23 0.875 0.0 0.5	580 K23 0.875 0.125 0.5	589 L23 0.875 0.25 0.5	598 M23 0.875 0.375 0.5	607 N23 0.875 0.5 0.5	616 O23 0.875 0.625 0.5	625 P23 0.875 0.75 0.5	634 Q23 0.875 0.875 0.5	643 R23 0.875 1.0 0.5	652 S23 1.0 0.0 0.5	661 T23 1.0 0.125 0.5	670 U23 1.0 0.25 0.5	679 V23 1.0 0.375 0.5	688 W23 1.0 0.5 0.5	697 X23 1.0 0.625 0.5	706 Y23 1.0 0.75 0.5	715 Z23 1.0 0.875 0.5	724 a23 1.0 1.0 0.5
24	491 A24 0.75 0.0 0.625	500 B24 0.75 0.125 0.625	509 C24 0.75 0.25 0.625	518 D24 0.75 0.375 0.625	527 E24 0.75 0.5 0.625	536 F24 0.75 0.625 0.625	545 G24 0.75 0.75 0.625	554 H24 0.75 0.875 0.625	563 I24 0.75 1.0 0.625	572 J24 0.875 0.0 0.625	581 K24 0.875 0.125 0.625	590 L24 0.875 0.25 0.625	599 M24 0.875 0.375 0.625	608 N24 0.875 0.5 0.625	617 O24 0.875 0.625 0.625	626 P24 0.875 0.75 0.625	635 Q24 0.875 0.875 0.625	644 R24 0.875 1.0 0.625	653 S24 1.0 0.0 0.625	662 T24 1.0 0.125 0.625	671 U24 1.0 0.25 0.625	680 V24 1.0 0.375 0.625	689 W24 1.0 0.5 0.625	698 X24 1.0 0.625 0.625	707 Y24 1.0 0.75 0.625	716 Z24 1.0 0.875 0.625	725 a24 1.0 1.0 0.625
25	492 A25 0.75 0.0 0.75	501 B25 0.75 0.125 0.75	510 C25 0.75 0.25 0.75	519 D25 0.75 0.375 0.75	528 E25 0.75 0.5 0.75	537 F25 0.75 0.625 0.75	546 G25 0.75 0.75 0.75	555 H25 0.75 0.875 0.75	564 I25 0.75 1.0 0.75	573 J25 0.875 0.0 0.75	582 K25 0.875 0.125 0.75	591 L25 0.875 0.25 0.75	600 M25 0.875 0.375 0.75	609 N25 0.875 0.5 0.75	618 O25 0.875 0.625 0.75	627 P25 0.875 0.75 0.75	636 Q25 0.875 0.875 0.75	645 R25 0.875 1.0 0.75	654 S25 1.0 0.0 0.75	663 T25 1.0 0.125 0.75	672 U25 1.0 0.25 0.75	681 V25 1.0 0.375 0.75	690 W25 1.0 0.5 0.75	699 X25 1.0 0.625 0.75	708 Y25 1.0 0.75 0.75	717 Z25 1.0 0.875 0.75	726 a25 1.0 1.0 0.75
26	493 A26 0.75 0.0 0.875	502 B26 0.75 0.125 0.875	511 C26 0.75 0.25 0.875	520 D26 0.75 0.375 0.875	529 E26 0.75 0.5 0.875	538 F26 0.75 0.625 0.875	547 G26 0.75 0.75 0.875	556 H26 0.75 0.875 0.875	565 I26 0.75 1.0 0.875	574 J26 0.875 0.0 0.875	583 K26 0.875 0.125 0.875	592 L26 0.875 0.25 0.875	601 M26 0.875 0.375 0.875	610 N26 0.875 0.5 0.875	619 O26 0.875 0.625 0.875	628 P26 0.875 0.75 0.875	637 Q26 0.875 0.875 0.875	646 R26 0.875 1.0 0.875	655 S26 1.0 0.0 0.875	664 T26 1.0 0.125 0.875	673 U26 1.0 0.25 0.875	682 V26 1.0 0.375 0.875	691 W26 1.0 0.5 0.875	700 X26 1.0 0.625 0.875	709 Y26 1.0 0.75 0.875	718 Z26 1.0 0.875 0.875	727 a26 1.0 1.0 0.875
27	494 A27 0.75 0.0 1.0	503 B27 0.75 0.125 1.0	512 C27 0.75 0.25 1.0	521 D27 0.75 0.375 1.0	530 E27 0.75 0.5 1.0	539 F27 0.75 0.625 1.0	548 G27 0.75 0.75 1.0	557 H27 0.75 0.875 1.0	566 I27 0.75 1.0 1.0	575 J27 0.875 0.0 1.0	584 K27 0.875 0.125 1.0	593 L27 0.875 0.25 1.0	602 M27 0.875 0.375 1.0	611 N27 0.875 0.5 1.0	620 O27 0.875 0.625 1.0	629 P27 0.875 0.75 1.0	638 Q27 0.875 0.875 1.0	647 R27 0.875 1.0 1.0	656 S27 1.0 0.0 1.0	665 T27 1.0 0.125 1.0	674 U27 1.0 0.25 1.0	683 V27 1.0 0.375 1.0	692 W27 1.0 0.5 1.0	701 X27 1.0 0.625 1.0	710 Y27 1.0 0.75 1.0	719 Z27 1.0 0.875 1.0	728 a27 1.0 1.0 1.0
28	729 A28 1.0 1.0 0.875	738 B28 1.0 0.875 0.875	747 C28 1.0 0.75 0.75	756 D28 1.0 0.625 0.625	765 E28 1.0 0.5 0.5	774 F28 1.0 0.375 0.375	783 G28 1.0 0.25 0.25	792 H28 1.0 0.125 0.125	801 I28 1.0 0.0 0.0	810 J28 1.0 1.0 0.875	819 K28 1.0 1.0 0.75	828 L28 1.0 1.0 0.75	837 M28 1.0 1.0 0.625	846 N28 1.0 1.0 0.5	855 O28 1.0 1.0 0.375	864 P28 1.0 1.0 0.25	873 Q28 1.0 1.0 0.125	882 R28 1.0 1.0 0.0	891 S28 1.0 1.0 0.875	900 T28 1.0 0.875 0.75	909 U28 1.0 0.75 0.75	918 V28 1.0 0.625 0.625	927 W28 1.0 0.5 0.5	936 X28 1.0 0.375 0.375	945 Y28 1.0 0.25 0.25	954 Z28 1.0 0.125 0.125	963 a28 0.0 0.0 0.0
29	730 A29 0.875 1.0 1.0	739 B29 0.875 0.875 0.875	748 C29 0.875 0.75 0.75	757 D29 0.875 0.625 0.625	766 E29 0.875 0.5 0.5	775 F29 0.875 0.375 0.375	784 G29 0.875 0.25 0.25	793 H29 0.875 0.125 0.125	802 I29 0.875 0.0 0.0	811 J29 0.875 0.875 0.875	820 K29 0.875 0.875 0.875	829 L29 0.875 0.875 0.75	838 M29 0.875 0.875 0.75	847 N29 0.875 0.875 0.5	856 O29 0.875 0.875 0.375	865 P29 0.875 0.875 0.25	874 Q29 0.875 0.875 0.125	883 R29 0.875 0.875 0.0	892 S29 1.0 0.875 0.875	901 T29 1.0 0.875 0.875	910 U29 1.0 0.75 0.75	919 V29 1.0 0.625 0.625	928 W29 1.0 0.5 0.5	937 X29 1.0 0.375 0.375	946 Y29 1.0 0.25 0.25	955 Z29 1.0 0.125 0.125	964 a29 0.0 0.0 0.0
30	731 A30 0.75 1.0 1.0	740 B30 0.75 0.875 0.875	749 C30 0.75 0.75 0.75	758 D30 0.75 0.625 0.625	767 E30 0.75 0.5 0.5	776 F30 0.75 0.375 0.375	785 G30 0.75 0.25 0.25	794 H30 0.75 0.125 0.125	803 I30 0.75 0.0 0.0	812 J30 0.875 0.75 0.75	821 K30 0.875 0.75 0.75	830 L30 0.875 0.75 0.75	839 M30 0.875 0.75 0.75	848 N30 0.875 0.75 0.75	857 O30 0.875 0.75 0.75	866 P30 0.875 0.75 0.25	875 Q30 0.875 0.75 0.125	884 R30 0.875 0.75 0.0	893 S30 1.0 0.875 0.875	902 T30 1.0 0.875 0.875	911 U30 1.0 0.75 0.75	920 V30 1.0 0.625 0.625	929 W30 1.0 0.5 0.5	938 X30 1.0 0.375 0.375	947 Y30 1.0 0.25 0.25	956 Z30 1.0 0.125 0.125	965 a30 0.0 0.0 0.0
31	732 A31 0.625 1.0 1.0	741 B31 0.625 0.875 0.875	750 C31 0.625 0.75 0.75	759 D31 0.625 0.625 0.625	768 E31 0.625 0.5 0.5	777 F31 0.625 0.375 0.375	786 G31 0.625 0.25 0.25	795 H31 0.625 0.125 0.125	804 I31 0.625 0.0 0.0	813 J31 0.625 0.625 0.875	822 K31 0.625 0.625 0.75	831 L31 0.625 0.625 0.75	840 M31 0.625 0.625 0.625	849 N31 0.625 0.625 0.5	858 O31 0.625 0.625 0.375	867 P31 0.625 0.625 0.25	876 Q31 0.625 0.625 0.125	885 R31 0.625 0.625 0.0	894 S31 1.0 0.625 0.875	903 T31 1.0 0.875 0.875	912 U31 1.0 0.75 0.75	921 V31 1.0 0.625 0.625	930 W31 1.0 0.5 0.5	939 X31 1.0 0.375 0.375	948 Y31 1.0 0.25 0.25	957 Z31 1.0 0.125 0.125	966 a31 0.0 0.0 0.0
32	733 A32 0.5 1.0 1.0	742 B32 0.5 0.875 0.875	751 C32 0.5 0.75 0.75	760 D32 0.5 0.625 0.625	769 E32 0.5 0.5 0.5	778 F32 0.5 0.375 0.375	787 G32 0.5 0.25 0.25	796 H32 0.5 0.125 0.125	805 I32 0.5 0.0 0.0	814 J32 0.5 0.5 0.875	823 K32 0.5 0.5 0.75	832 L32 0.5 0.5 0.75	841 M32 0.5 0.5 0.625	850 N32 0.5 0.5 0.5	859 O32 0.5 0.5 0.375	868 P32 0.5 0.5 0.25	877 Q32 0.5 0.5 0.125	886 R32 0.5 0.5 0.0	895 S32 1.0 1.0 1.0	904 T32 1.0 0.875 0.875	913 U32 1.0 0.75 0.75	922 V32 1.0 0.625 0.625	931 W32 1.0 0.5 0.5	940 X32 1.0 0.375 0.375	949 Y32 1.0 0.25 0.25	958 Z32 1.0 0.125 0.125	967 a32 0.0 0.0 0.0
33	734 A33 0.375 1.0 1.0	743 B33 0.375 0.875 0.875	752 C33 0.375 0.75 0.75	761 D33 0.375 0.625 0.625	770 E33 0.375 0.5 0.5	779 F33 0.375 0.375 0.375	788 G33 0.375 0.25 0.25	797 H33 0.375 0.125 0.125	806 I33 0.375 0.0 0.0	815 J33 0.375 0.375 0.875	824 K33 0.375 0.375 0.75	833 L33 0.375 0.375 0.75	842 M33 0.375 0.375 0.625	851 N33 0.375 0.375 0.5	860 O33 0.375 0.375 0.375	869 P33 0.375 0.375 0.25	878 Q33 0.375 0.375 0.125	887 R33 0.375 0.375 0.0	896 S33 1.0 0.875 0.875	905 T33 1.0 0.875 0.875	914 U33 1.0 0.75 0.75	923 V33 1.0 0.625 0.625	932 W33 1.0 0.5 0.5	941 X33 1.0 0.375 0.375	950 Y33 1.0 0.25 0.25	959 Z33 1.0 0.125 0.125	968 a33 0.0 0.0 0.0
34	735 A34 0.25 1.0 1.0	744 B34 0.25 0.875 0.875	753 C34 0.25 0.75 0.75	762 D34 0.25 0.625 0.625	771 E34 0.25 0.5 0.5	780 F34 0.25																					