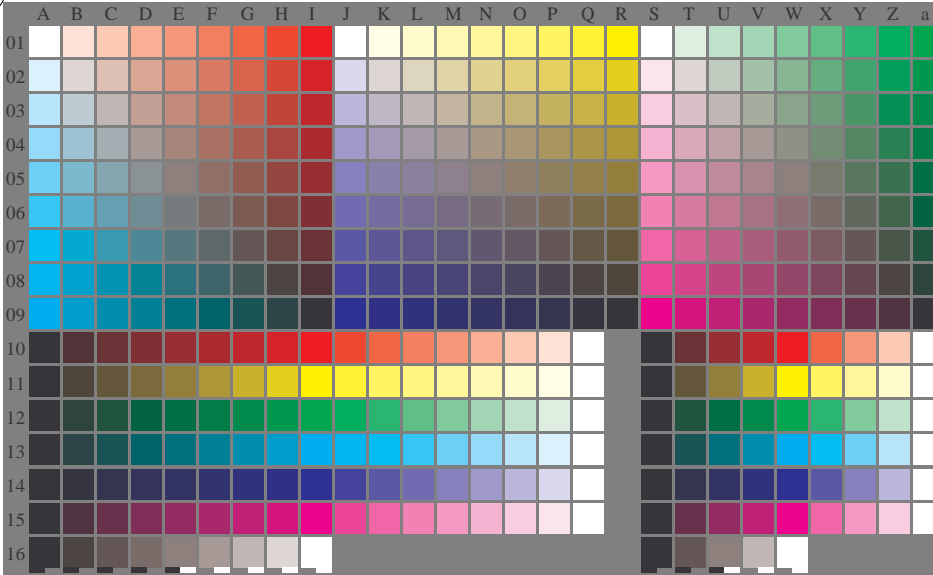
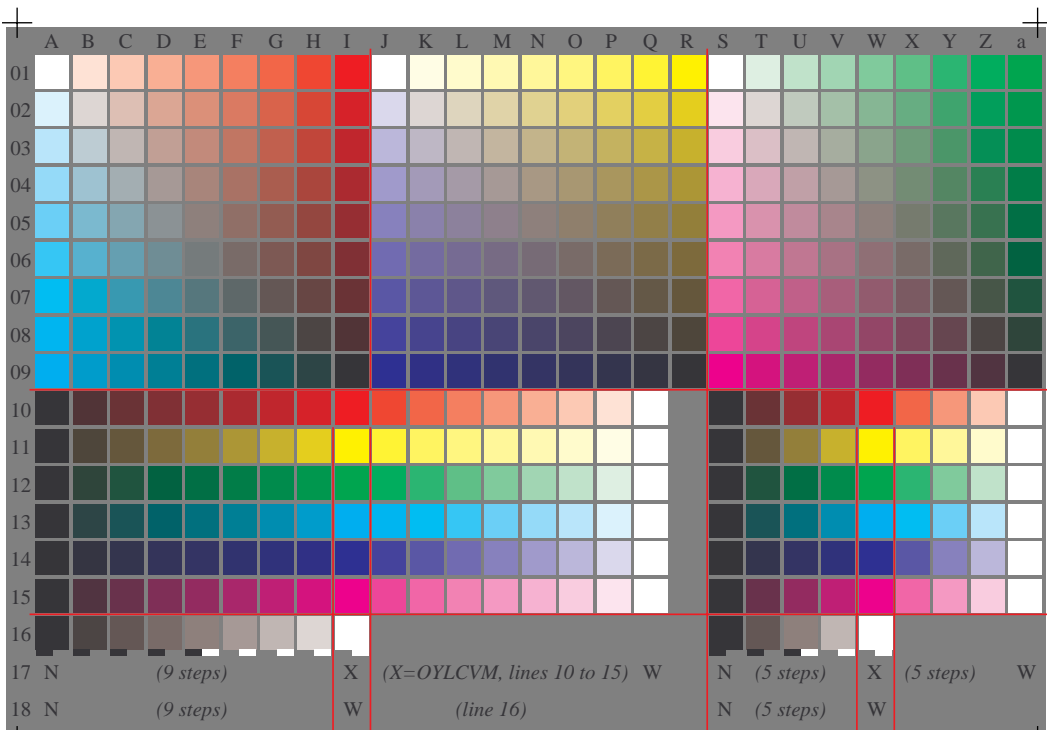


See for similar files: <http://www.ps.bam.de/YE15/>  
Technical information: <http://www.ps.bam.de> Version 2.1, io=1.1



17 N (9 steps) X (X=OYLCVM, lines 10 to 15) W N (5 steps) X (5 steps) W  
18 N (9 steps) W (line 16) N (5 steps) W

BAM registration: 20070101\_YE15/L15E00N1.PS/.TXT  
application for output of monitor, data projector, or printer systems  
BAM material: code=ha4ta



	A	B	C	D	E	F	G	H	I	J	K	L	M	N	O	P	Q	R	S	T	U	V	W	X	Y	Z	a
00	001 A01	009 B01	018 C01	027 D01	036 E01	045 F01	054 G01	063 H01	072 I01	081 J01	090 K01	099 L01	108 M01	117 N01	126 O01	135 P01	144 Q01	153 R01	162 S01	171 T01	180 U01	189 V01	198 W01	207 X01	216 Y01	225 Z01	234 a01
01	0.0	0.0	0.0	0.0	0.0	0.0	0.0	0.0	0.0	0.0	0.0	0.0	0.0	0.0	0.0	0.0	0.0	0.0	0.0	0.0	0.0	0.0	0.0	0.0	0.0	0.0	0.0
02	0.0	0.125	0.25	0.375	0.5	0.625	0.75	0.875	1.0	0.0	0.0	0.0	0.0	0.0	0.0	0.0	0.0	0.0	0.0	0.0	0.0	0.0	0.0	0.0	0.0	0.0	0.0
03	0.0	0.125	0.25	0.375	0.5	0.625	0.75	0.875	1.0	0.0	0.125	0.25	0.375	0.5	0.625	0.75	0.875	1.0	0.0	0.125	0.25	0.375	0.5	0.625	0.75	0.875	1.0
04	0.0	0.125	0.25	0.375	0.5	0.625	0.75	0.875	1.0	0.0	0.125	0.25	0.375	0.5	0.625	0.75	0.875	1.0	0.0	0.125	0.25	0.375	0.5	0.625	0.75	0.875	1.0
05	0.0	0.125	0.25	0.375	0.5	0.625	0.75	0.875	1.0	0.0	0.125	0.25	0.375	0.5	0.625	0.75	0.875	1.0	0.0	0.125	0.25	0.375	0.5	0.625	0.75	0.875	1.0
06	0.0	0.125	0.25	0.375	0.5	0.625	0.75	0.875	1.0	0.0	0.125	0.25	0.375	0.5	0.625	0.75	0.875	1.0	0.0	0.125	0.25	0.375	0.5	0.625	0.75	0.875	1.0
07	0.0	0.125	0.25	0.375	0.5	0.625	0.75	0.875	1.0	0.0	0.125	0.25	0.375	0.5	0.625	0.75	0.875	1.0	0.0	0.125	0.25	0.375	0.5	0.625	0.75	0.875	1.0
08	0.0	0.125	0.25	0.375	0.5	0.625	0.75	0.875	1.0	0.0	0.125	0.25	0.375	0.5	0.625	0.75	0.875	1.0	0.0	0.125	0.25	0.375	0.5	0.625	0.75	0.875	1.0
09	0.0	0.125	0.25	0.375	0.5	0.625	0.75	0.875	1.0	0.0	0.125	0.25	0.375	0.5	0.625	0.75	0.875	1.0	0.0	0.125	0.25	0.375	0.5	0.625	0.75	0.875	1.0
10	0.0	0.125	0.25	0.375	0.5	0.625	0.75	0.875	1.0	0.0	0.125	0.25	0.375	0.5	0.625	0.75	0.875	1.0	0.0	0.125	0.25	0.375	0.5	0.625	0.75	0.875	1.0
11	0.0	0.125	0.25	0.375	0.5	0.625	0.75	0.875	1.0	0.0	0.125	0.25	0.375	0.5	0.625	0.75	0.875	1.0	0.0	0.125	0.25	0.375	0.5	0.625	0.75	0.875	1.0
12	0.0	0.125	0.25	0.375	0.5	0.625	0.75	0.875	1.0	0.0	0.125	0.25	0.375	0.5	0.625	0.75	0.875	1.0	0.0	0.125	0.25	0.375	0.5	0.625	0.75	0.875	1.0
13	0.0	0.125	0.25	0.375	0.5	0.625	0.75	0.875	1.0	0.0	0.125	0.25	0.375	0.5	0.625	0.75	0.875	1.0	0.0	0.125	0.25	0.375	0.5	0.625	0.75	0.875	1.0
14	0.0	0.125	0.25	0.375	0.5	0.625	0.75	0.875	1.0	0.0	0.125	0.25	0.375	0.5	0.625	0.75	0.875	1.0	0.0	0.125	0.25	0.375	0.5	0.625	0.75	0.875	1.0
15	0.0	0.125	0.25	0.375	0.5	0.625	0.75	0.875	1.0	0.0	0.125	0.25	0.375	0.5	0.625	0.75	0.875	1.0	0.0	0.125	0.25	0.375	0.5	0.625	0.75	0.875	1.0
16	0.0	0.125	0.25	0.375	0.5	0.625	0.75	0.875	1.0	0.0	0.125	0.25	0.375	0.5	0.625	0.75	0.875	1.0	0.0	0.125	0.25	0.375	0.5	0.625	0.75	0.875	1.0
17	0.0	0.125	0.25	0.375	0.5	0.625	0.75	0.875	1.0	0.0	0.125	0.25	0.375	0.5	0.625	0.75	0.875	1.0	0.0	0.125	0.25	0.375	0.5	0.625	0.75	0.875	1.0
18	0.0	0.125	0.25	0.375	0.5	0.625	0.75	0.875	1.0	0.0	0.125	0.25	0.375	0.5	0.625	0.75	0.875	1.0	0.0	0.125	0.25	0.375	0.5	0.625	0.75	0.875	1.0

(9 steps)

X X=X=OYLCV, lines 10 to 15)

N (5 steps)

X (5 steps)

W

(9 steps)

W (line 16)

N (5 steps)

W