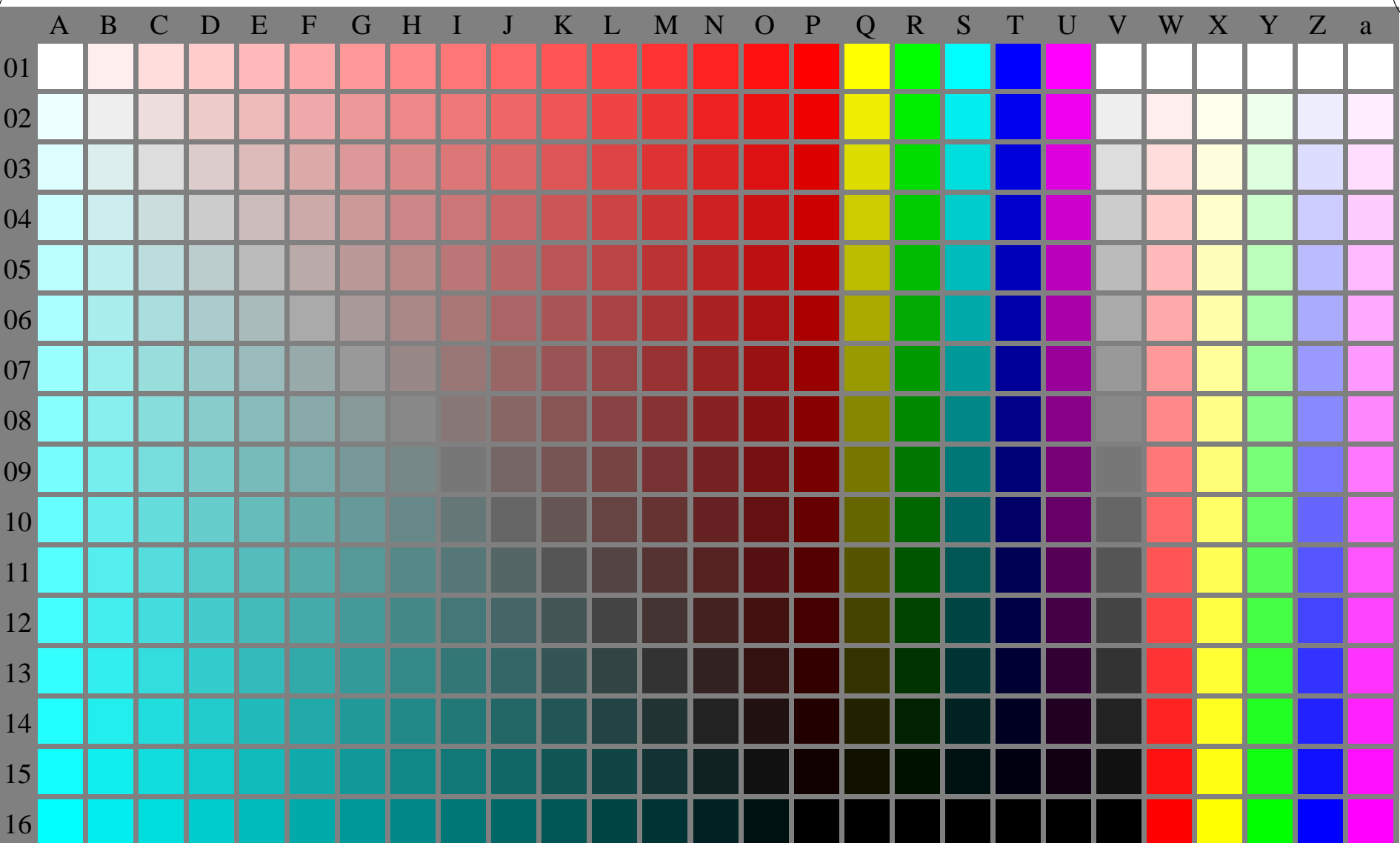


See for similar files: <http://www.ps.bam.de/YE16/>  
Technical information: <http://www.ps.bam.de> Version 2.1, io=1,1

BAM registration: 20070101-YE16/10L/L16E00NP.PS/.PDF BAM material: code=rh4ta  
application for output of monitor, data projector, or printer systems



17 W (line 01, 16 steps) O Y L C V M W W W W W W  
18 C (line 16, 16 steps) N N N N N N N O Y L V M