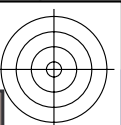
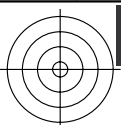
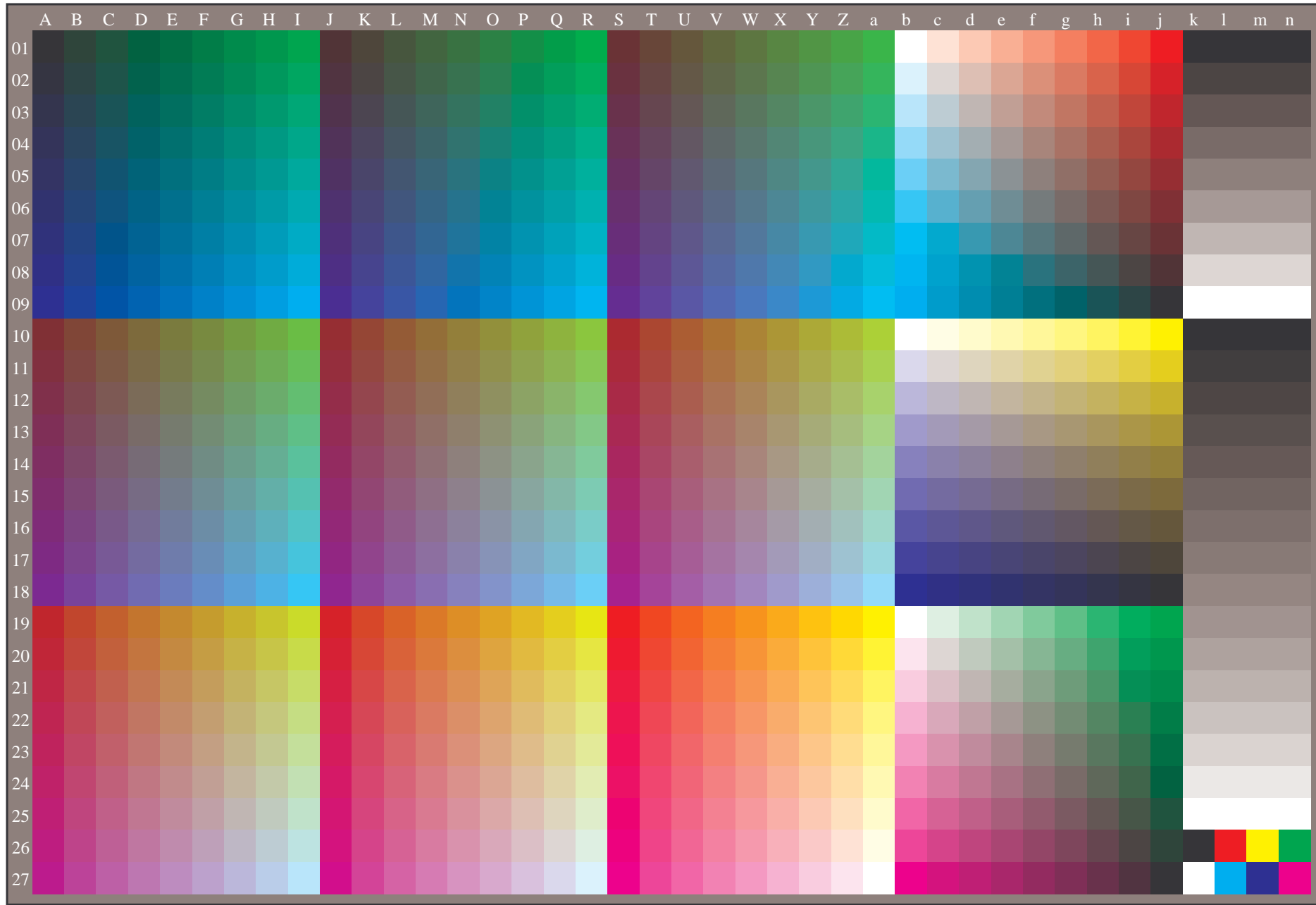


http://farbe.li.tu-berlin.de/AEA8/AEA8L0NP.PDF /.PS; vector graphic (VG); start output  
N: no 3D-linearization (OL) in file (F) or PS-startup (S), page 1/1



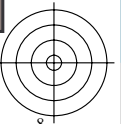
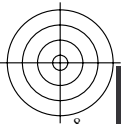
see similar files: <http://farbe.li.tu-berlin.de/AEA8/AEA8.HTM>  
technical information: <http://farbe.li.tu-berlin.de> or <http://130.149.60.45/~farbmetrik>

TUB registration: 20200201-AEA8/AEA8L0NP.PDF /.PS TUB material: code=rh4ta  
application for evaluation and measurement of display or print output



AEA80-7N, File transfer of figure-vector graphic (VG) in: <http://farbe.li.tu-berlin.de/AEA8/AEA80-7N.PDF>. Transfer to PG with *cmy0 setcmykcolor* not realized up to now with four values *cmy0*.

TUB-test chart AEA8; Frame file and figure file in VG input: *w/rgb/cmyk -> cmy0\_*  
Figure-vector graphic (VG) in standard position left and down output: relative gamma  $g_p = 1$



C M Y O L V