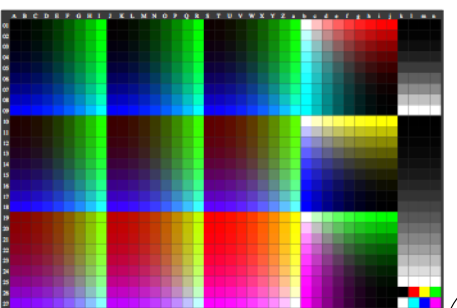
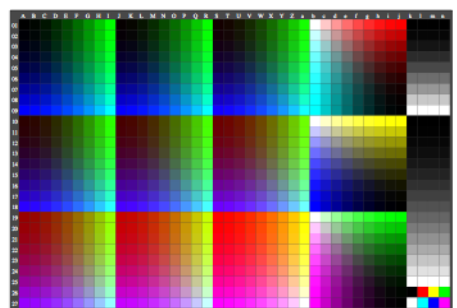
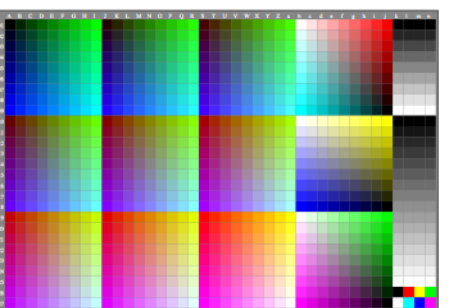
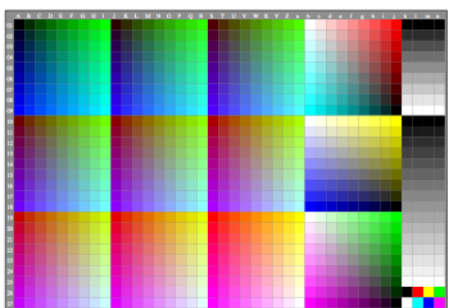
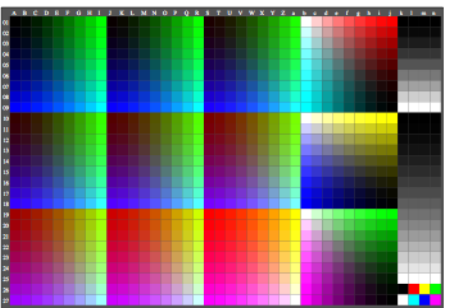
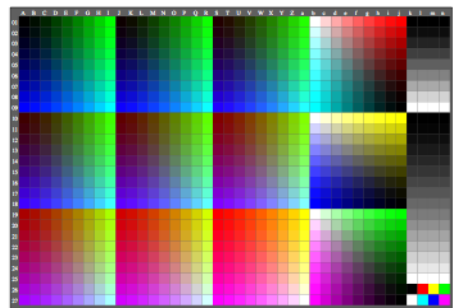
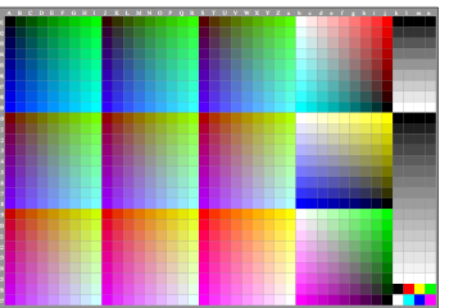
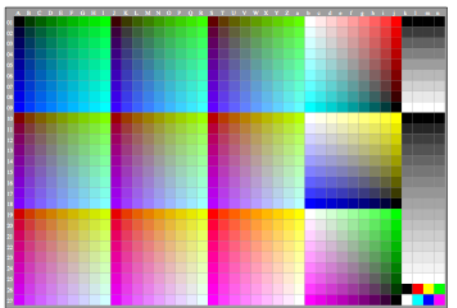
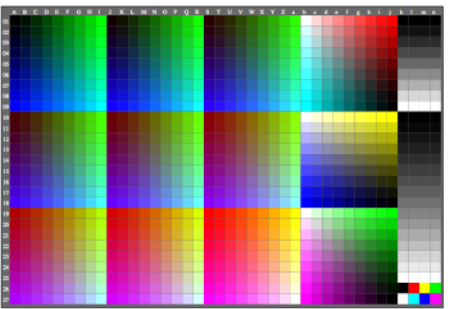
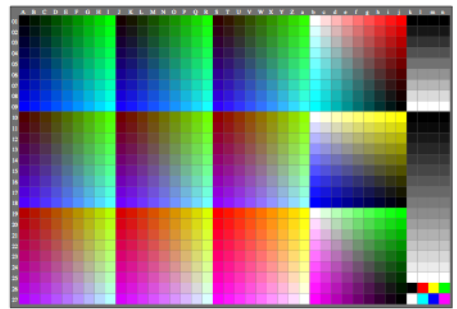
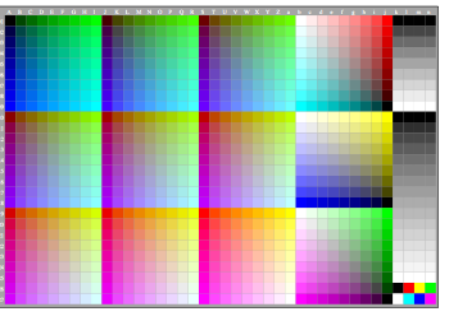
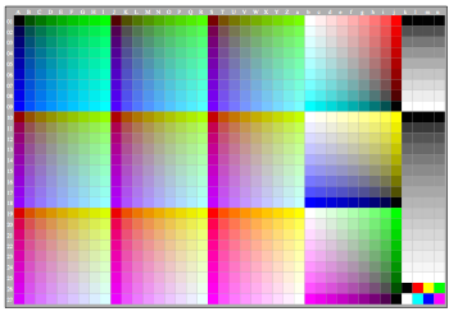


Siehe ähnliche Dateien: <http://farbe.li.tu-berlin.de/AGA7/AGA7L0NA.txt>
 Technische Information: <http://farbe.li.tu-berlin.de> oder <http://130.149.60.45/~farbmetrik>

```

Frame File PostScript Code für 1-Minus-Relation (1MR) nach setrgbcolor
01 !PS-Adobe-3.0 EPSF-3.0, 1MR for change to setrgbcolor
02 /FFM_setrgbcolor {setrgbcolor} bind def
03 /1MR-0000 {1MRB procedure 1MR-0000
04 1MR-Transform of setgray and setcmykcolor to FFM_setrgbcolor
05
06 /setgray {1MRB procedure setgray to setrgbcolor
07 dup dup FFM_setrgbcolor
08 } def 1MRB procedure setgray to setrgbcolor
09
10 /setcmykcolor {1MRB procedure setcmykcolor to setrgbcolor
11 /FFM_x exch def /FFM_y exch def /FFM_m exch def /FFM_c exch def
12 /FFM_k 0 eq { /FFM_c sub 1 /FFM_m sub 1 /FFM_y sub 1 /FFM_x sub 1 /FFM_setrgbcolor}
13 { /FFM_x sub dup dup /FFM_setrgbcolor} ifelse
14 } def 1MRB procedure setcmykcolor to setrgbcolor
15
16 } def 1MRB procedure 1MR-0000
17 1MRB 1MR-Relation (1MR) to setrgbcolor
    
```

Erläuterungen:
 Zeile 02: notwendig für die Definitionsänderung von *rgb setrgbcolor*.
 Die *FFM_PS-Datei* muss Zeile 02 vor Benutzung von *1MR-0000* enthalten.
 Zeile 06 bis 08: Änderung von *se setgray* nach *rgb setrgbcolor*.
 Zeile 10 bis 14: Änderung von *cmyk setcmykcolor* nach *rgb setrgbcolor*.
 Der PostScript-Code für beides, die Änderung von 1MT und Gamma ist in:
 AGA20-7N und AGA20-8N.



TUB-Registrierung: 20200201-AGA7/AGA7L0NA.txt /eps TUB-Material: Code=rh4ta
 Anwendung für Beurteilung und Messung von Display- oder Druck-Ausgabe