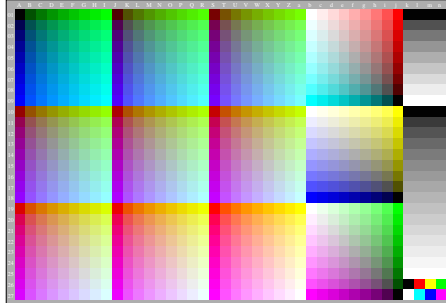
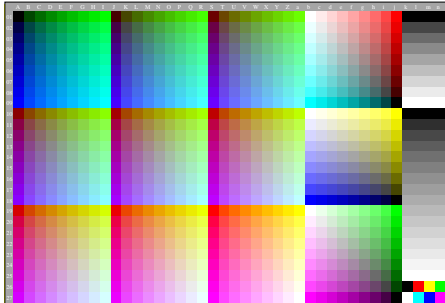


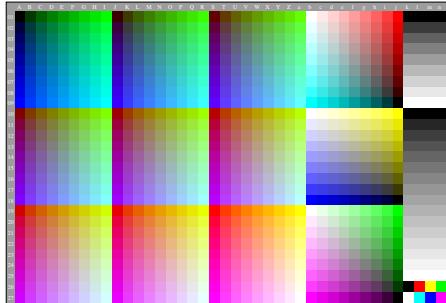
AGX80-1A, Gamma  $g_s=1.140$ ,  $g_p=0.475$ ,  $C_{Yp1}$



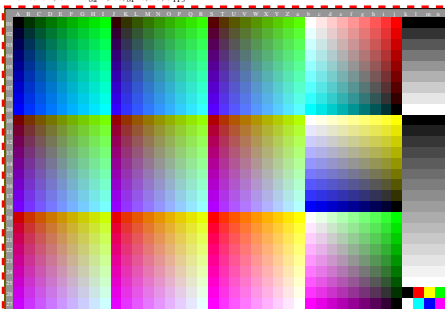
AGX80-2A, Gamma  $g_s=1.320$ ,  $g_p=0.550$ ,  $C_{Yp2}$



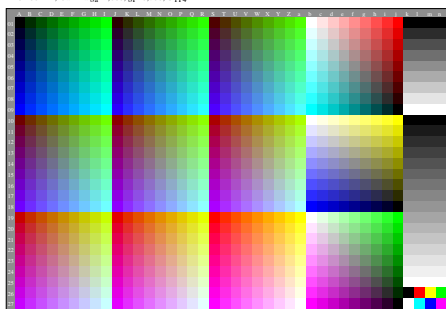
AGX80-3A, Gamma  $g_s=1.500$ ,  $g_p=0.625$ ,  $C_{Yp3}$



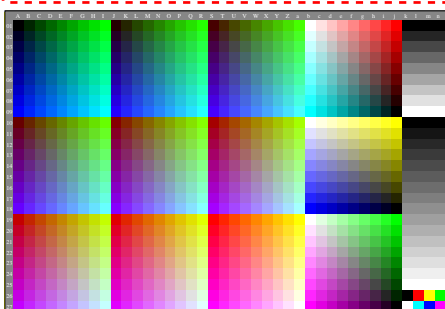
AGX80-4A, Gamma  $g_s=1.680$ ,  $g_p=0.700$ ,  $C_{Yp4}$



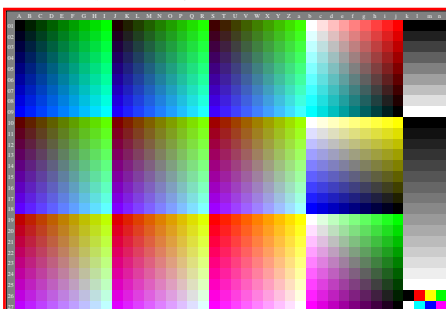
AGX80-5A, Gamma  $g_s=1.860$ ,  $g_p=0.775$ ,  $C_{Yp5}$



AGX80-6A, Gamma  $g_s=2.037$ ,  $g_p=0.849$ ,  $C_{Yp6}$



AGX80-7A, Gamma  $g_s=2.217$ ,  $g_p=0.924$ ,  $C_{Yp7}$



AGX80-8A, Gamma  $g_s=2.400$ ,  $g_p=1.000$ ,  $C_{Yp8}-C_{Yp8}$