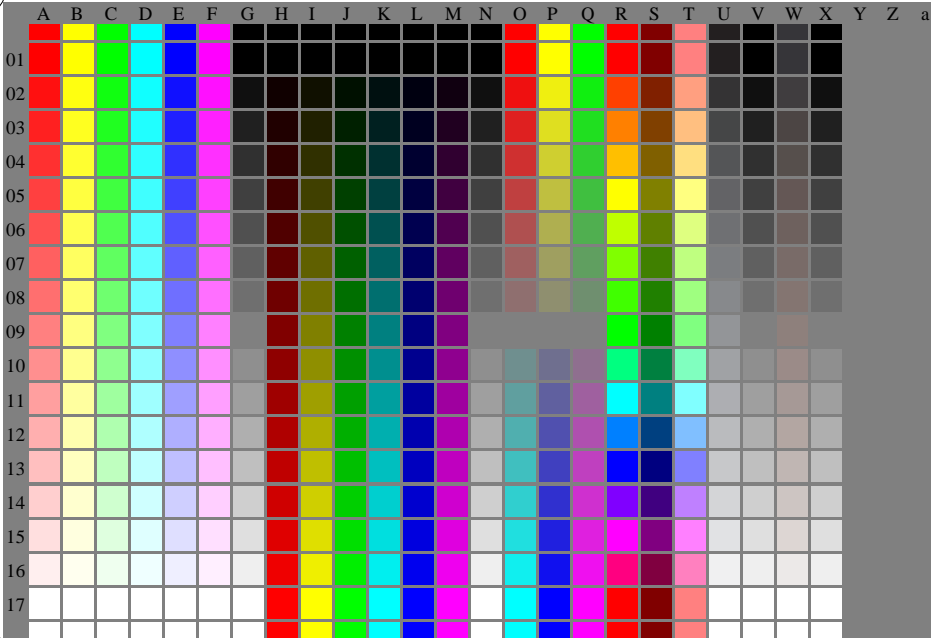


See for similar files: <http://www.ps.bam.de/De11/>; [http://www.ps.bam.de/De.HTM](http://www.ps.bam.de/De11/ww.w.ps.bam.de/De.HTM)
Technical information: <http://www.ps.bam.de/3387ZE> Version 2.1, io=1.1



De10-7N, Test chart with 24x17=408 colours and digital equidistant 17 step colour scales; compare ISO/IEC 15775:1999; rgb colour data, patch size and grey layout: 8mm x 8mm, 247mm x 170mm, Page 1/3

Test chart 1 according to DIN 33872-1, Page 1/3
17 step equally spaced colours and three hue circles

input: *rgb* (->*oly**) *setrgbcolor*
output: no change compared to input

BAM registration: 20080301-De11/L11e00N1.PS /.TXT
application for evaluation and measurement of printer or monitor systems

BAM material: code=ha4ta