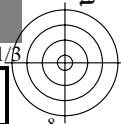
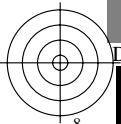
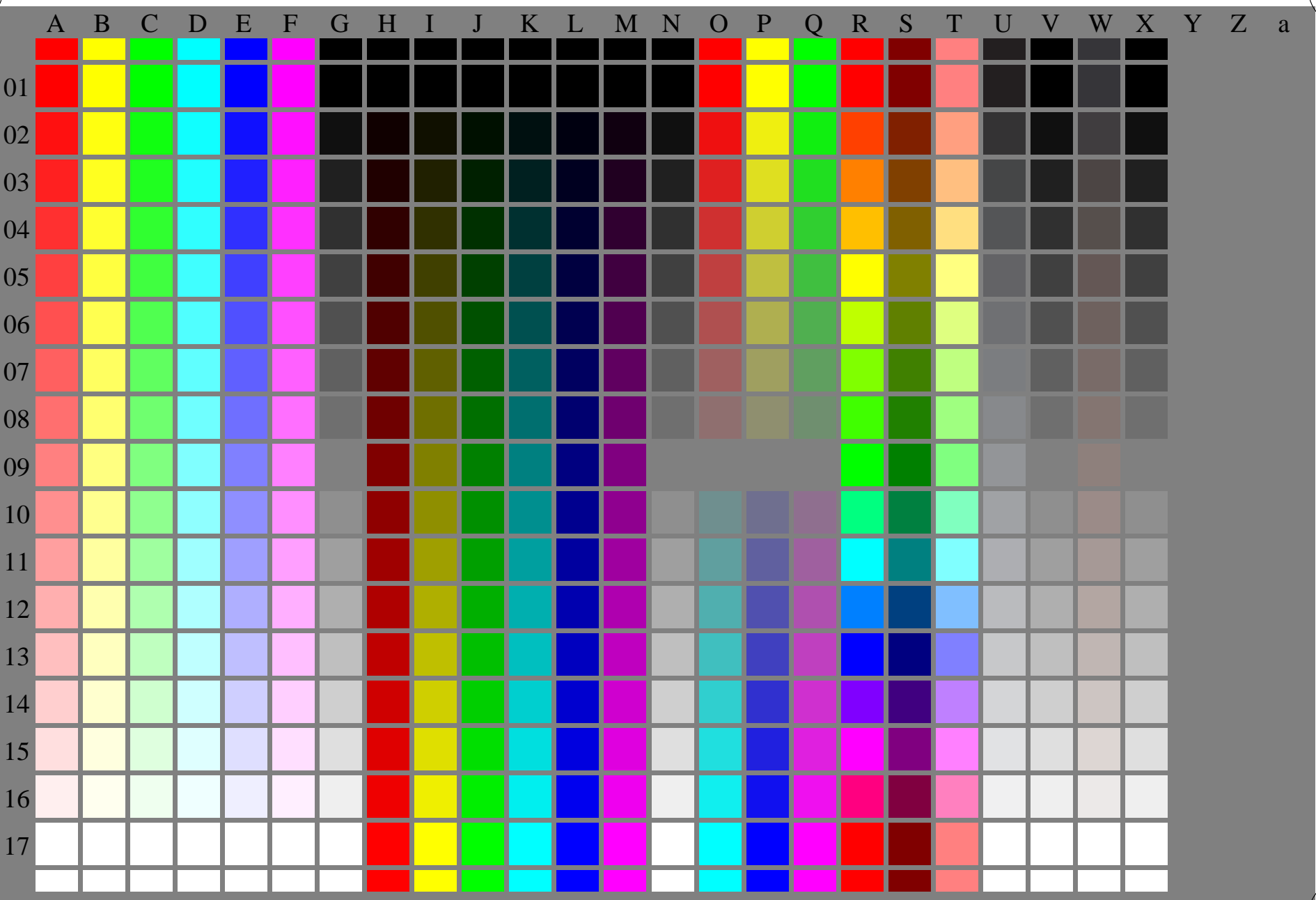
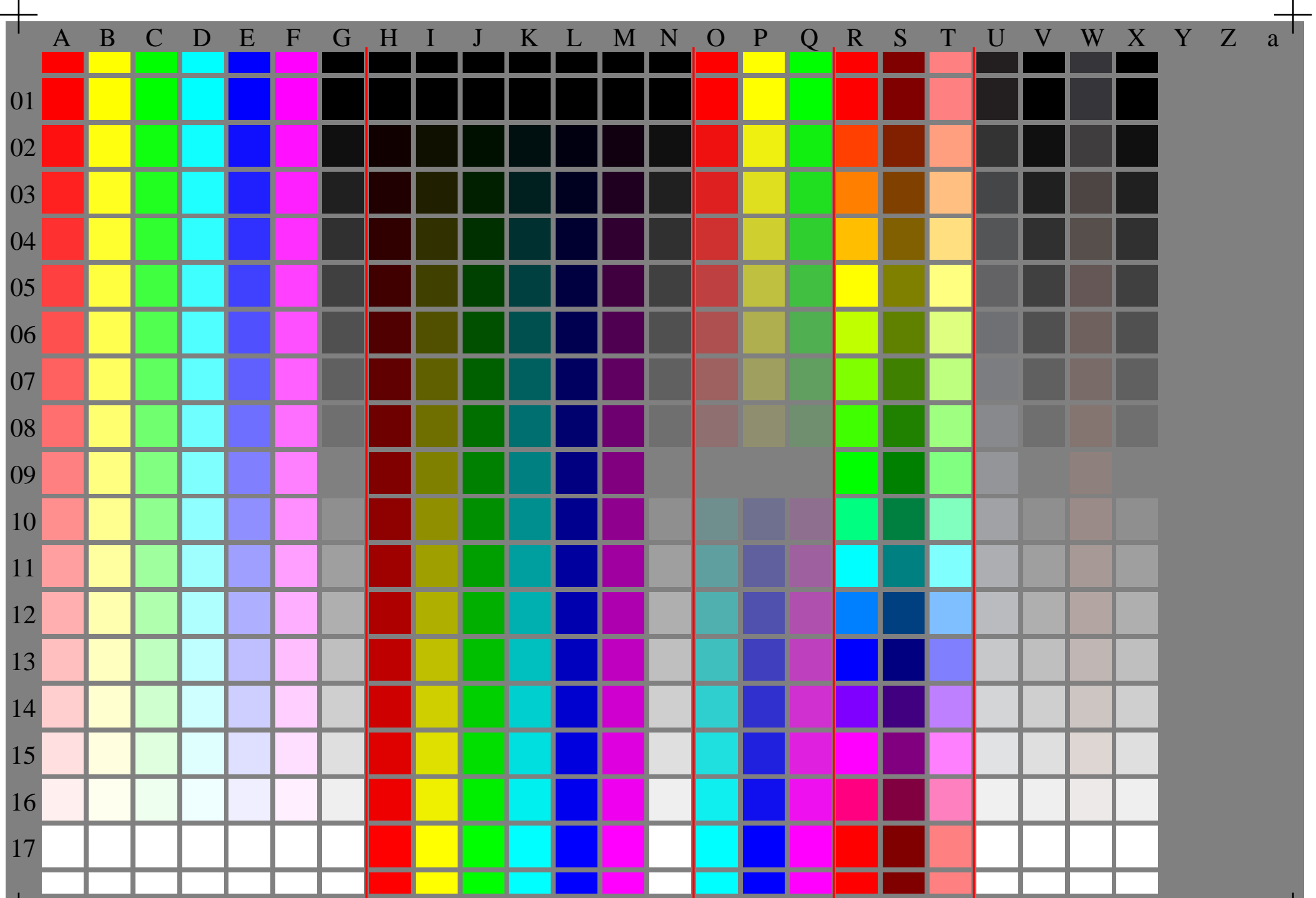


Siehe ähnliche Dateien: <http://www.ps.bam.de/Dg11/>; [www.ps.bam.de/Dg5.HTM](http://www.ps.bam.de/Dg5.HTM)  
Technische Information: <http://www.ps.bam.de/33872> Version 2.1, io=1,1

BAM-Registrierung: 20080301-Dg11/10L/L11g00NP.PS /.PDF BAM-Material: Code=rh4ta  
Anwendung für Beurteilung und Messung von Drucker- oder Monitorssystemen





	A	B	C	D	E	F	G	H	I	J	K	L	M	N	O	P	Q	R	S	T	U	V	W	X	Y	Z	a	
	001 A01	018 B01	035 C01	052 D01	069 E01	086 F01	103 G01	120 H01	137 I01	154 J01	171 K01	188 L01	205 M01	222 N01	239 O01	256 P01	273 Q01	290 R01	307 S01	324 T01	341 U01	358 V01	375 W01	392 X01				
01	1.0 0.0 0.0	1.0 0.0 0.0	0.0 1.0 0.0	0.0 1.0 1.0	0.0 1.0 1.0	1.0 0.0 1.0	0.0 0.0 0.0	0.0 0.0 0.0	0.0 0.0 0.0	0.0 0.0 0.0	0.0 0.0 0.0	0.0 0.0 0.0	0.0 0.0 0.0	w*=-0.0 w* setgray	1.0 0.0 0.0	1.0 1.0 0.0	0.0 1.0 0.0	0.0 0.0 0.0	0.5 0.0 0.0	1.0 0.5 0.5	n*=-1.0 000n* setcmyk	w*=-0.0 setgray	n*=-1.0 nnn0* setcmyk	w*=-0.0 www* setrgb				
02	1.0 0.062 0.062	0.062 1.0 0.062	0.062 1.0 0.062	0.062 1.0 0.062	0.062 1.0 0.062	1.0 0.062 0.062	0.062 0.062 0.062	0.062 0.062 0.0	0.062 0.062 0.062	0.062 0.062 0.062	0.062 0.062 0.062	0.062 0.062 0.062	0.062 0.062 0.062	w*=-0.062 w* setgray	0.937 0.062 0.062	0.937 0.937 0.937	0.062 0.937 0.062	0.25 0.937 0.062	0.0 0.125 0.0	0.5 0.625 0.5	0.000n* setcmyk	w*=-0.062 w* setgray	nnn0* setcmyk	www* setrgb				
03	1.0 0.125 0.125	1.0 0.125 0.125	0.125 1.0 0.125	0.125 1.0 0.125	0.125 1.0 0.125	1.0 0.125 0.125	0.125 0.125 0.125	0.125 0.125 0.125	0.125 0.125 0.125	0.125 0.125 0.125	0.125 0.125 0.125	0.125 0.125 0.125	0.125 0.125 0.125	w*=-0.125 w* setgray	0.875 0.125 0.125	0.875 0.875 0.875	0.125 0.125 0.125	0.0 0.5 0.0	0.5 0.25 0.0	1.0 0.75 0.5	n*=-0.875 000n* setcmyk	w*=-0.125 w* setgray	n*=-0.875 nnn0* setcmyk	w*=-0.125 www* setrgb				
04	1.0 0.187 0.187	1.0 0.187 0.187	0.187 1.0 0.187	0.187 1.0 0.187	0.187 1.0 0.187	1.0 0.187 0.187	0.187 0.187 0.187	0.187 0.187 0.187	0.187 0.187 0.187	0.187 0.187 0.187	0.187 0.187 0.187	0.187 0.187 0.187	0.187 0.187 0.187	w*=-0.187 w* setgray	0.812 0.187 0.187	0.812 0.812 0.812	0.187 0.187 0.187	0.0 0.75 0.0	0.5 0.375 0.0	1.0 0.875 0.5	n*=-0.812 000n* setcmyk	w*=-0.187 w* setgray	n*=-0.812 nnn0* setcmyk	w*=-0.187 www* setrgb				
05	1.0 0.25 0.25	0.25 1.0 0.25	0.25 1.0 0.25	0.25 1.0 0.25	0.25 1.0 0.25	1.0 0.25 0.25	0.25 0.25 0.25	0.25 0.25 0.25	0.25 0.25 0.25	0.25 0.25 0.25	0.25 0.25 0.25	0.25 0.25 0.25	0.25 0.25 0.25	w*=-0.25 w* setgray	0.75 0.25 0.25	0.75 0.75 0.75	0.25 0.75 0.25	0.0 1.0 0.0	0.5 1.0 0.5	1.0 0.5 1.0	0.000n* setcmyk	w*=-0.25 w* setgray	nnn0* setcmyk	www* setrgb				
06	1.0 0.312 0.312	1.0 0.312 0.312	0.312 1.0 0.312	0.312 1.0 0.312	0.312 1.0 0.312	1.0 0.312 0.312	0.312 0.312 0.312	0.312 0.312 0.312	0.312 0.312 0.312	0.312 0.312 0.312	0.312 0.312 0.312	0.312 0.312 0.312	0.312 0.312 0.312	w*=-0.312 w* setgray	0.687 0.312 0.312	0.687 0.687 0.687	0.312 0.687 0.312	0.75 1.0 0.0	0.375 0.5 0.0	0.875 1.0 0.5	n*=-0.687 000n* setcmyk	w*=-0.312 w* setgray	n*=-0.687 nnn0* setcmyk	w*=-0.312 www* setrgb				
07	1.0 0.375 0.375	1.0 0.375 0.375	0.375 1.0 0.375	0.375 1.0 0.375	0.375 1.0 0.375	1.0 0.375 0.375	0.375 0.375 0.375	0.375 0.375 0.375	0.375 0.375 0.375	0.375 0.375 0.375	0.375 0.375 0.375	0.375 0.375 0.375	0.375 0.375 0.375	w*=-0.375 w* setgray	0.625 0.375 0.375	0.625 0.625 0.625	0.375 0.625 0.375	0.0 1.0 0.0	0.25 0.5 0.0	0.75 1.0 0.5	n*=-0.625 000n* setcmyk	w*=-0.375 w* setgray	n*=-0.625 nnn0* setcmyk	w*=-0.375 www* setrgb				
08	1.0 0.437 0.437	1.0 0.437 0.437	0.437 1.0 0.437	0.437 1.0 0.437	0.437 1.0 0.437	1.0 0.437 0.437	0.437 0.437 0.437	0.437 0.437 0.437	0.437 0.437 0.437	0.437 0.437 0.437	0.437 0.437 0.437	0.437 0.437 0.437	0.437 0.437 0.437	w*=-0.437 w* setgray	0.562 0.437 0.437	0.562 0.562 0.562	0.437 0.562 0.437	0.25 1.0 0.0	0.625 0.5 0.0	1.0 0.5 1.0	0.000n* setcmyk	w*=-0.437 w* setgray	nnn0* setcmyk	www* setrgb				
09	1.0 0.5 0.5	1.0 0.5 0.5	0.5 1.0 0.5	0.5 1.0 0.5	0.5 1.0 0.5	1.0 0.5 0.5	0.5 0.5 0.5	0.5 0.5 0.5	0.5 0.5 0.5	0.5 0.5 0.5	0.5 0.5 0.5	0.5 0.5 0.5	0.5 0.5 0.5	w*=-0.5 w* setgray	0.5 0.5 0.5	0.5 0.5 0.5	0.5 0.5 0.5	0.0 1.0 0.0	0.0 0.5 0.0	0.5 1.0 0.5	n*=-0.5 000n* setcmyk	w*=-0.5 w* setgray	n*=-0.5 nnn0* setcmyk	w*=-0.5 www* setrgb				
10	1.0 0.562 0.562	1.0 0.562 0.562	0.562 1.0 0.562	0.562 1.0 0.562	0.562 1.0 0.562	1.0 0.562 0.562	0.562 0.562 0.562	0.562 0.562 0.562	0.562 0.562 0.562	0.562 0.562 0.562	0.562 0.562 0.562	0.562 0.562 0.562	0.562 0.562 0.562	w*=-0.562 w* setgray	0.437 0.562 0.562	0.437 0.437 0.437	0.562 0.437 0.562	0.0 0.5 0.0	0.5 1.0 0.25	1.0 0.75 0.5	n*=-0.437 000n* setcmyk	w*=-0.562 w* setgray	n*=-0.437 nnn0* setcmyk	w*=-0.562 www* setrgb				
11	1.0 0.625 0.625	1.0 0.625 0.625	0.625 1.0 0.625	0.625 1.0 0.625	0.625 1.0 0.625	1.0 0.625 0.625	0.625 0.625 0.625	0.625 0.625 0.625	0.625 0.625 0.625	0.625 0.625 0.625	0.625 0.625 0.625	0.625 0.625 0.625	0.625 0.625 0.625	w*=-0.625 w* setgray	0.375 0.625 0.625	0.375 0.375 0.375	0.625 0.375 0.625	0.0 1.0 0.0	0.25 0.5 0.0	1.0 0.5 1.0	0.000n* setcmyk	w*=-0.625 w* setgray	nnn0* setcmyk	www* setrgb				
12	1.0 0.687 0.687	1.0 0.687 0.687	0.687 1.0 0.687	0.687 1.0 0.687	0.687 1.0 0.687	1.0 0.687 0.687	0.687 0.687 0.687	0.687 0.687 0.687	0.687 0.687 0.687	0.687 0.687 0.687	0.687 0.687 0.687	0.687 0.687 0.687	0.687 0.687 0.687	w*=-0.687 w* setgray	0.312 0.687 0.687	0.312 0.312 0.687	0.687 0.312 0.687	0.0 0.5 0.0	0.0 0.25 0.0	0.5 0.75 1.0	n*=-0.312 000n* setcmyk	w*=-0.687 w* setgray	n*=-0.312 nnn0* setcmyk	w*=-0.687 www* setrgb				
13	1.0 0.75 0.75	1.0 0.75 0.75	0.75 1.0 0.75	0.75 1.0 0.75	0.75 1.0 0.75	1.0 0.75 0.75	0.75 0.75 0.75	0.75 0.75 0.75	0.75 0.75 0.75	0.75 0.75 0.75	0.75 0.75 0.75	0.75 0.75 0.75	0.75 0.75 0.75	w*=-0.75 w* setgray	0.25 0.75 0.75	0.25 0.25 0.75	0.75 0.25 0.75	0.0 0.0 0.0	0.0 0.5 0.0	0.5 1.0 0.5	n*=-0.25 000n* setcmyk	w*=-0.75 w* setgray	n*=-0.25 nnn0* setcmyk	w*=-0.75 www* setrgb				
14	1.0 0.812 0.812	1.0 0.812 0.812	0.812 1.0 0.812	0.812 1.0 0.812	0.812 1.0 0.812	1.0 0.812 0.812	0.812 0.812 0.812	0.812 0.812 0.812	0.812 0.812 0.812	0.812 0.812 0.812	0.812 0.812 0.812	0.812 0.812 0.812	0.812 0.812 0.812	w*=-0.812 w* setgray	0.187 0.812 0.812	0.187 0.187 0.187	0.812 0.187 0.812	0.0 0.0 0.0	0.0 0.5 0.0	0.5 1.0 0.5	0.000n* setcmyk	w*=-0.812 w* setgray	nnn0* setcmyk	www* setrgb				
15	1.0 0.875 0.875	1.0 0.875 0.875	0.875 1.0 0.875	0.875 1.0 0.875	0.875 1.0 0.875	1.0 0.875 0.875	0.875 0.875 0.875	0.875 0.875 0.875	0.875 0.875 0.875	0.875 0.875 0.875	0.875 0.875 0.875	0.875 0.875 0.875	0.875 0.875 0.875	w*=-0.875 w* setgray	0.125 0.875 0.875	0.125 0.125 0.875	0.875 0.125 0.875	0.0 0.0 0.0	0.0 0.5 0.0	1.0 0.5 1.0	n*=-0.125 000n* setcmyk	w*=-0.875 w* setgray	n*=-0.125 nnn0* setcmyk	w*=-0.875 www* setrgb				
16	1.0 0.937 0.937	1.0 0.937 0.937	0.937 1.0 0.937	0.937 1.0 0.937	0.937 1.0 0.937	1.0 0.937 0.937	0.937 0.937 0.937	0.937 0.937 0.937	0.937 0.937 0.937	0.937 0.937 0.937	0.937 0.937 0.937	0.937 0.937 0.937	0.937 0.937 0.937	w*=-0.937 w* setgray	0.062 0.937 0.937	0.062 0.062 0.937	0.937 0.062 0.937	0.0 0.0 0.0	0.0 0.5 0.0	0.5 1.0 0.25	0.000n* setcmyk	w*=-0.937 w* setgray	nnn0* setcmyk	www* setrgb				
17	1.0 1.0 1.0	1.0 1.0 1.0	1.0 1.0 1.0	1.0 1.0 1.0	1.0 1.0 1.0	1.0 1.0 1.0	1.0 1.0 1.0	1.0 1.0 1.0	1.0 1.0 1.0	1.0 1.0 1.0	1.0 1.0 1.0	1.0 1.0 1.0	1.0 1.0 1.0	w*=-1.0 w* setgray	1.0 0.0 0.0	1.0 0.0 0.0	1.0 0.0 0.0	0.0 0.0 0.0	0.0 0.0 0.0	0.0 0.0 0.0	0.0 0.0 0.0	0.000n* setcmyk	w*=-1.0 w* setgray	nnn0* setcmyk	www* setrgb			