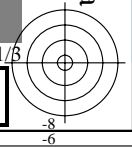
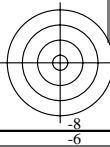
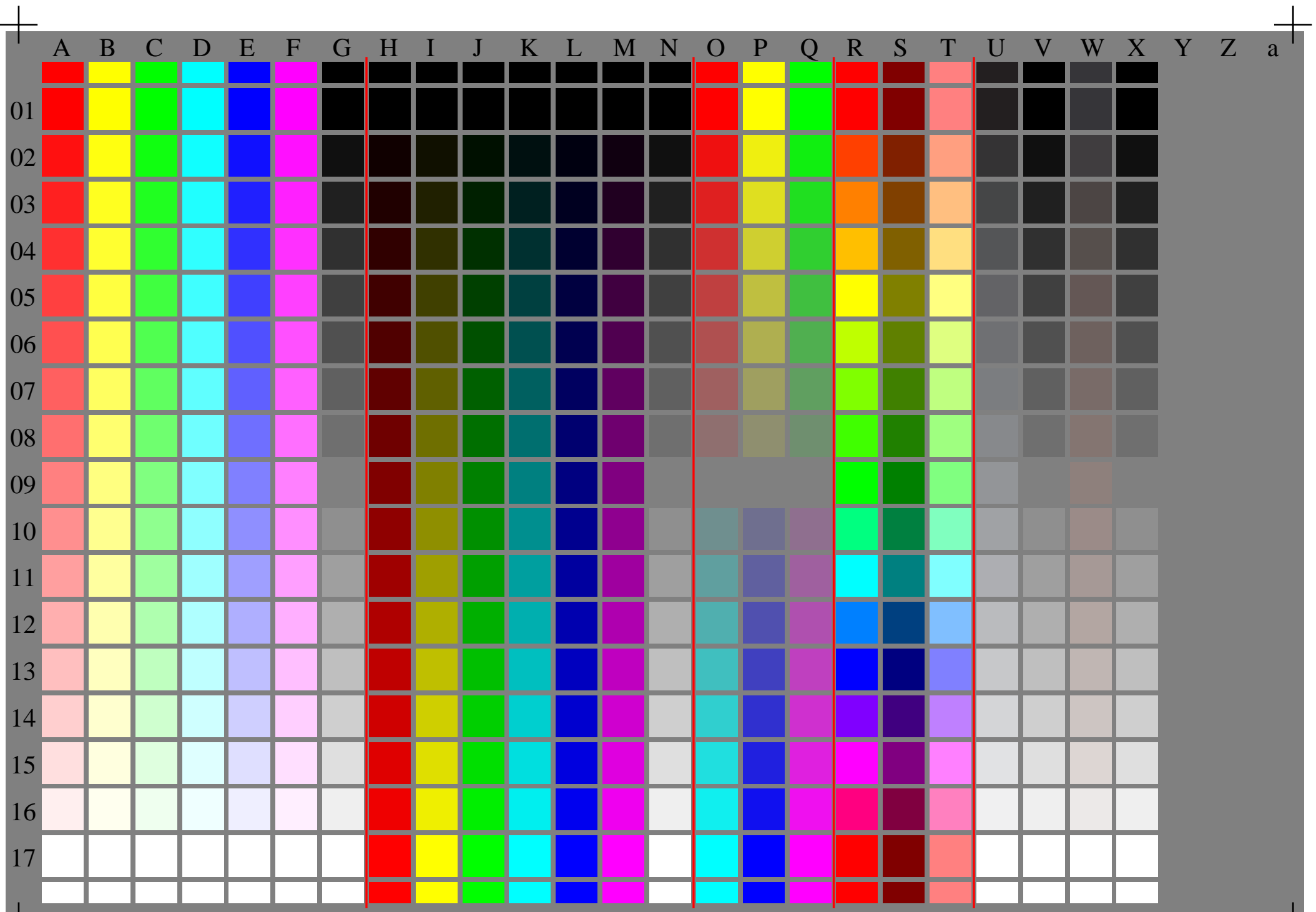


Siehe ähnliche Dateien: <http://www.ps.bam.de/Dg11/>; www.ps.bam.de/33872 Version 2.1, io=1,1

BAM-Registrierung: 20080301-Dg11/10P/P11g00NP.PS /.PDF BAM-Material: Code=rh4ta
Anwendung für Beurteilung und Messung von Drucker- oder Monitorsystemen

	A	B	C	D	E	F	G	H	I	J	K	L	M	N	O	P	Q	R	S	T	U	V	W	X	Y	Z	a	
01	Red	Yellow	Cyan	Magenta	Blue	Green	Black	Black	Black	Black	Black	Black	Black	Black	Black	Red	Yellow	Cyan	Magenta	Blue	Green	Black	Black	Black	Black	Black	Black	
02	Red	Yellow	Cyan	Magenta	Blue	Green	Black	Black	Black	Black	Black	Black	Black	Black	Black	Red	Yellow	Cyan	Magenta	Blue	Green	Black	Black	Black	Black	Black	Black	Black
03	Red	Yellow	Cyan	Magenta	Blue	Green	Black	Black	Black	Black	Black	Black	Black	Black	Black	Red	Yellow	Cyan	Magenta	Blue	Green	Black	Black	Black	Black	Black	Black	Black
04	Red	Yellow	Cyan	Magenta	Blue	Green	Black	Black	Black	Black	Black	Black	Black	Black	Black	Red	Yellow	Cyan	Magenta	Blue	Green	Black	Black	Black	Black	Black	Black	Black
05	Red	Yellow	Cyan	Magenta	Blue	Green	Black	Black	Black	Black	Black	Black	Black	Black	Black	Red	Yellow	Cyan	Magenta	Blue	Green	Black	Black	Black	Black	Black	Black	Black
06	Red	Yellow	Cyan	Magenta	Blue	Green	Black	Black	Black	Black	Black	Black	Black	Black	Black	Red	Yellow	Cyan	Magenta	Blue	Green	Black	Black	Black	Black	Black	Black	Black
07	Red	Yellow	Cyan	Magenta	Blue	Green	Black	Black	Black	Black	Black	Black	Black	Black	Black	Red	Yellow	Cyan	Magenta	Blue	Green	Black	Black	Black	Black	Black	Black	Black
08	Red	Yellow	Cyan	Magenta	Blue	Green	Black	Black	Black	Black	Black	Black	Black	Black	Black	Red	Yellow	Cyan	Magenta	Blue	Green	Black	Black	Black	Black	Black	Black	Black
09	Red	Yellow	Cyan	Magenta	Blue	Green	Black	Black	Black	Black	Black	Black	Black	Black	Black	Red	Yellow	Cyan	Magenta	Blue	Green	Black	Black	Black	Black	Black	Black	Black
10	Red	Yellow	Cyan	Magenta	Blue	Green	Black	Black	Black	Black	Black	Black	Black	Black	Black	Red	Yellow	Cyan	Magenta	Blue	Green	Black	Black	Black	Black	Black	Black	Black
11	Red	Yellow	Cyan	Magenta	Blue	Green	Black	Black	Black	Black	Black	Black	Black	Black	Black	Red	Yellow	Cyan	Magenta	Blue	Green	Black	Black	Black	Black	Black	Black	Black
12	Red	Yellow	Cyan	Magenta	Blue	Green	Black	Black	Black	Black	Black	Black	Black	Black	Black	Red	Yellow	Cyan	Magenta	Blue	Green	Black	Black	Black	Black	Black	Black	Black
13	Red	Yellow	Cyan	Magenta	Blue	Green	Black	Black	Black	Black	Black	Black	Black	Black	Black	Red	Yellow	Cyan	Magenta	Blue	Green	Black	Black	Black	Black	Black	Black	Black
14	Red	Yellow	Cyan	Magenta	Blue	Green	Black	Black	Black	Black	Black	Black	Black	Black	Black	Red	Yellow	Cyan	Magenta	Blue	Green	Black	Black	Black	Black	Black	Black	Black
15	Red	Yellow	Cyan	Magenta	Blue	Green	Black	Black	Black	Black	Black	Black	Black	Black	Black	Red	Yellow	Cyan	Magenta	Blue	Green	Black	Black	Black	Black	Black	Black	Black
16	Red	Yellow	Cyan	Magenta	Blue	Green	Black	Black	Black	Black	Black	Black	Black	Black	Black	Red	Yellow	Cyan	Magenta	Blue	Green	Black	Black	Black	Black	Black	Black	Black
17	Red	Yellow	Cyan	Magenta	Blue	Green	Black	Black	Black	Black	Black	Black	Black	Black	Black	Red	Yellow	Cyan	Magenta	Blue	Green	Black	Black	Black	Black	Black	Black	Black





	A	B	C	D	E	F	G	H	I	J	K	L	M	N	O	P	Q	R	S	T	U	V	W	X	Y	Z	a		
01	001 A01 1.0 0.0 0.0 0.0	018 B01 1.0 1.0 0.0	035 C01 1.0 1.0 0.0	052 D01 1.0 1.0 0.0	069 E01 1.0 0.0 1.0	086 F01 1.0 0.0 1.0	103 G01 1.0 0.0 0.0	120 H01 1.0 0.0 0.0	137 I01 1.0 0.0 0.0	154 J01 1.0 0.0 0.0	171 K01 1.0 0.0 0.0	188 L01 1.0 0.0 0.0	205 M01 1.0 0.0 0.0	222 N01 w*=-0.0 w* setgray	239 O01 1.0 0.0 0.0	256 P01 1.0 1.0 0.0	273 Q01 1.0 1.0 0.0	290 R01 1.0 0.0 0.0	307 S01 1.0 0.0 0.0	324 T01 1.0 0.5 0.5	341 U01 w*=-1.0 0.0 0.0	358 V01 w*=-0.125 w* setgray	375 W01 w*=-1.0 nnn0* setcmymk	392 X01 w*=-0.0 www* setrgb					
02	002 A02 1.0 0.062 0.062	019 B02 1.0 1.0 0.062	036 C02 1.0 1.0 0.062	053 D02 1.0 1.0 0.062	070 E02 1.0 0.062 1.0	087 F02 1.0 0.062 1.0	104 G02 1.0 0.062 0.062	121 H02 1.0 0.062 0.0	138 I02 1.0 0.062 0.0	155 J02 1.0 0.062 0.0	172 K02 1.0 0.062 0.062	189 L02 1.0 0.062 0.062	206 M02 1.0 0.062 0.062	223 N02 w*=-0.062 w* setgray	240 O02 0.937 0.937 0.937	257 P02 0.937 0.937 0.937	274 Q02 0.062 0.062 0.062	291 R02 1.0 0.25 0.0	308 S02 0.5 0.125 0.0	325 T02 1.0 0.625 0.5	342 U02 n*=-0.937 0.0 0.0	359 V02 w*=-0.062 w* setgray	376 W02 n*=-0.937 nnn0* setcmymk	393 X02 w*=-0.062 www* setrgb					
03	003 A03 1.0 0.125 0.125	020 B03 1.0 1.0 0.125	037 C03 1.0 1.0 0.125	054 D03 1.0 1.0 0.125	071 E03 1.0 0.125 1.0	088 F03 1.0 0.125 1.0	105 G03 1.0 0.125 0.125	122 H03 1.0 0.125 0.0	139 I03 1.0 0.125 0.0	156 J03 1.0 0.125 0.0	173 K03 1.0 0.125 0.125	190 L03 1.0 0.0 0.125	207 M03 1.0 0.125 0.125	224 N03 w*=-0.125 w* setgray	241 O03 0.875 0.125 0.125	258 P03 0.875 0.875 0.125	275 Q03 0.125 0.875 0.125	292 R03 1.0 0.5 0.0	309 S03 1.0 0.25 0.5	326 T03 1.0 0.75 0.5	343 U03 n*=-0.875 0.0 0.0	360 V03 w*=-0.125 w* setgray	377 W03 n*=-0.875 nnn0* setcmymk	394 X03 w*=-0.125 www* setrgb					
04	004 A04 1.0 0.187 0.187	021 B04 1.0 1.0 0.187	038 C04 1.0 1.0 0.187	055 D04 1.0 1.0 0.187	072 E04 1.0 0.187 1.0	089 F04 1.0 0.187 1.0	106 G04 1.0 0.187 0.187	123 H04 1.0 0.187 0.0	140 I04 1.0 0.187 0.0	157 J04 1.0 0.187 0.0	174 K04 1.0 0.0 0.187	191 L04 1.0 0.0 0.187	208 M04 1.0 0.0 0.187	225 N04 w*=-0.187 w* setgray	242 O04 0.812 0.812 0.812	259 P04 0.812 0.812 0.812	276 Q04 1.0 0.187 0.75	293 R04 1.0 0.5 0.375	310 S04 1.0 0.0 0.5	327 T04 1.0 1.0 0.875	344 U04 n*=-0.812 0.0 0.0	361 V04 w*=-0.187 w* setgray	378 W04 n*=-0.812 nnn0* setcmymk	395 X04 w*=-0.187 www* setrgb					
05	005 A05 1.0 0.25 0.25	022 B05 1.0 1.0 0.25	039 C05 1.0 1.0 0.25	056 D05 1.0 1.0 0.25	073 E05 1.0 0.25 1.0	090 F05 1.0 0.25 1.0	107 G05 1.0 0.25 0.25	124 H05 1.0 0.25 0.0	141 I05 1.0 0.25 0.0	158 J05 1.0 0.0 0.0	175 K05 1.0 0.0 0.25	192 L05 1.0 0.0 0.25	209 M05 1.0 0.25 0.25	226 N05 w*=-0.25 w* setgray	243 O05 0.75 0.75 0.25	260 P05 0.75 0.75 0.25	277 Q05 0.25 0.75 0.25	294 R05 1.0 1.0 0.0	311 S05 0.5 1.0 0.5	328 T05 1.0 1.0 0.5	345 U05 n*=-0.75 0.0 0.0	362 V05 w*=-0.25 w* setgray	379 W05 n*=-0.75 nnn0* setcmymk	396 X05 w*=-0.25 www* setrgb					
06	006 A06 1.0 0.312 0.312	023 B06 1.0 1.0 0.312	040 C06 1.0 1.0 0.312	057 D06 1.0 1.0 0.312	074 E06 1.0 0.312 1.0	091 F06 1.0 0.312 1.0	108 G06 1.0 0.312 0.312	125 H06 1.0 0.312 0.0	142 I06 1.0 0.312 0.0	159 J06 1.0 0.312 0.0	176 K06 1.0 0.312 0.312	193 L06 1.0 0.0 0.312	210 M06 1.0 0.312 0.312	227 N06 w*=-0.312 w* setgray	244 O06 0.687 0.312 0.312	261 P06 0.687 0.687 0.312	278 Q06 0.312 0.687 0.312	295 R06 0.75 1.0 0.0	312 S06 0.5 1.0 0.5	329 T06 0.875 1.0 0.5	346 U06 n*=-0.687 0.0 0.0	363 V06 w*=-0.312 w* setgray	380 W06 n*=-0.687 nnn0* setcmymk	397 X06 w*=-0.312 www* setrgb					
07	007 A07 1.0 0.375 0.375	024 B07 1.0 1.0 0.375	041 C07 1.0 1.0 0.375	058 D07 1.0 1.0 0.375	075 E07 1.0 0.375 1.0	092 F07 1.0 0.375 1.0	109 G07 1.0 0.375 0.375	126 H07 1.0 0.375 0.0	143 I07 1.0 0.375 0.0	160 J07 1.0 0.0 0.375	177 K07 1.0 0.0 0.375	194 L07 1.0 0.0 0.375	211 M07 1.0 0.375 0.375	228 N07 w*=-0.375 w* setgray	245 O07 0.625 0.625 0.375	262 P07 0.625 0.625 0.375	279 Q07 0.375 0.625 0.375	296 R07 1.0 0.5 1.0	313 S07 0.5 0.25 0.5	330 T07 0.75 1.0 0.5	347 U07 n*=-0.625 0.0 0.0	364 V07 w*=-0.375 w* setgray	381 W07 n*=-0.625 nnn0* setcmymk	398 X07 w*=-0.375 www* setrgb					
08	008 A08 1.0 0.437 0.437	025 B08 1.0 1.0 0.437	042 C08 1.0 1.0 0.437	059 D08 1.0 1.0 0.437	076 E08 1.0 0.437 1.0	093 F08 1.0 0.437 1.0	110 G08 1.0 0.437 0.437	127 H08 1.0 0.437 0.0	144 I08 1.0 0.437 0.0	161 J08 1.0 0.0 0.0	178 K08 1.0 0.0 0.437	195 L08 1.0 0.0 0.437	212 M08 1.0 0.437 0.437	229 N08 w*=-0.437 w* setgray	246 O08 0.562 0.437 0.437	263 P08 0.562 0.562 0.437	280 Q08 0.437 0.562 0.437	297 R08 0.25 1.0 0.0	314 S08 0.125 0.5 0.5	331 T08 0.625 1.0 0.5	348 U08 n*=-0.562 0.0 0.0	365 V08 w*=-0.437 w* setgray	382 W08 n*=-0.562 nnn0* setcmymk	399 X08 w*=-0.437 www* setrgb					
09	009 A09 1.0 0.5 0.5	026 B09 1.0 1.0 0.5	043 C09 1.0 1.0 0.5	060 D09 1.0 1.0 0.5	077 E09 1.0 0.5 1.0	094 F09 1.0 0.5 1.0	111 G09 1.0 0.5 0.5	128 H09 1.0 0.5 0.0	145 I09 1.0 0.5 0.0	162 J09 1.0 0.0 0.0	179 K09 1.0 0.0 0.5	196 L09 1.0 0.0 0.5	213 M09 1.0 0.5 0.5	230 N09 w*=-0.5 w* setgray	247 O09 0.5 0.5 0.5	264 P09 0.5 0.5 0.5	281 Q09 0.5 0.5 0.5	298 R09 1.0 1.0 0.0	315 S09 0.5 1.0 0.5	332 T09 0.5 1.0 0.5	349 U09 n*=-0.5 0.0 0.0	366 V09 w*=-0.5 w* setgray	383 W09 n*=-0.5 nnn0* setcmymk	400 X09 w*=-0.5 www* setrgb					
10	010 A10 1.0 0.562 0.562	027 B10 1.0 1.0 0.562	044 C10 1.0 1.0 0.562	061 D10 1.0 1.0 0.562	078 E10 1.0 0.562 1.0	095 F10 1.0 0.562 1.0	112 G10 1.0 0.562 0.562	129 H10 1.0 0.562 0.0	146 I10 1.0 0.562 0.0	163 J10 1.0 0.0 0.562	180 K10 1.0 0.0 0.562	197 L10 1.0 0.0 0.562	214 M10 1.0 0.562 0.562	231 N10 w*=-0.562 w* setgray	248 O10 0.437 0.562 0.437	265 P10 0.437 0.562 0.437	282 Q10 0.562 0.437 0.562	299 R10 1.0 1.0 0.5	316 S10 0.5 1.0 0.25	333 T10 0.5 1.0 0.75	350 U10 n*=-0.437 0.0 0.0	367 V10 w*=-0.562 w* setgray	384 W10 n*=-0.437 nnn0* setcmymk	401 X10 w*=-0.562 www* setrgb					
11	011 A11 1.0 0.625 0.625	028 B11 1.0 1.0 0.625	045 C11 1.0 1.0 0.625	062 D11 1.0 1.0 0.625	079 E11 1.0 0.625 1.0	096 F11 1.0 0.625 1.0	113 G11 1.0 0.625 0.625	130 H11 1.0 0.625 0.0	147 I11 1.0 0.625 0.0	164 J11 1.0 0.0 0.0	181 K11 1.0 0.0 0.625	198 L11 1.0 0.0 0.625	215 M11 1.0 0.625 0.625	232 N11 w*=-0.625 w* setgray	249 O11 0.375 0.625 0.625	266 P11 0.375 0.375 0.625	283 Q11 0.625 0.375 0.625	300 R11 1.0 0.0 1.0	317 S11 0.5 1.0 1.0	334 T11 0.5 1.0 1.0	351 U11 n*=-0.375 0.0 0.0	368 V11 w*=-0.625 w* setgray	385 W11 n*=-0.375 nnn0* setcmymk	402 X11 w*=-0.625 www* setrgb					
12	012 A12 1.0 0.687 0.687	029 B12 1.0 1.0 0.687	046 C12 1.0 1.0 0.687	063 D12 1.0 1.0 0.687	080 E12 1.0 0.687 1.0	097 F12 1.0 0.687 1.0	114 G12 1.0 0.687 0.687	131 H12 1.0 0.687 0.0	148 I12 1.0 0.687 0.0	165 J12 1.0 0.0 0.0	182 K12 1.0 0.0 0.687	199 L12 1.0 0.0 0.687	216 M12 1.0 0.687 0.687	233 N12 w*=-0.687 w* setgray	250 O12 0.312 0.687 0.687	267 P12 0.312 0.312 0.687	284 Q12 0.687 0.312 0.687	301 R12 1.0 0.5 1.0	318 S12 0.0 0.25 0.5	335 T12 0.5 0.75 1.0	352 U12 n*=-0.312 0.0 0.0	369 V12 w*=-0.687 w* setgray	386 W12 n*=-0.312 nnn0* setcmymk	403 X12 w*=-0.687 www* setrgb					
13	013 A13 1.0 0.75 0.75	030 B13 1.0 1.0 0.75	047 C13 1.0 1.0 0.75	064 D13 1.0 1.0 0.75	081 E13 1.0 0.75 1.0	098 F13 1.0 0.75 1.0	115 G13 1.0 0.75 0.75	132 H13 1.0 0.75 0.0	149 I13 1.0 0.0 0.75	166 J13 1.0 0.0 0.75	183 K13 1.0 0.0 0.75	200 L13 1.0 0.0 0.75	217 M13 1.0 0.75 0.75	234 N13 w*=-0.75 w* setgray	251 O13 0.25 0.25 0.75	268 P13 0.25 0.25 0.75	285 Q13 0.75 0.25 0.75	302 R13 1.0 0.0 1.0	319 S13 0.5 1.0 0.5	336 T13 0.5 1.0 1.0	353 U13 n*=-0.25 0.0 0.0	370 V13 w*=-0.75 w* setgray	387 W13 n*=-0.25 nnn0* setcmymk	404 X13 w*=-0.75 www* setrgb					
14	014 A14 1.0 0.812 0.812	031 B14 1.0 1.0 0.812	048 C14 1.0 1.0 0.812	065 D14 1.0 1.0 0.812	082 E14 1.0 0.812 1.0	099 F14 1.0 0.812 1.0	116 G14 1.0 0.812 0.812	133 H14 1.0 0.812 0.0	150 I14 1.0 0.0 0.0	167 J14 1.0 0.0 0.812	184 K14 1.0 0.0 0.812	201 L14 1.0 0.0 0.812	218 M14 1.0 0.812 0.812	235 N14 w*=-0.812 w* setgray	252 O14 0.187 0.187 0.812	269 P14 0.187 0.187 0.812	286 Q14 0.812 0.187 0.812	303 R14 0.5 0.0 1.0	320 S14 0.25 0.0 0.5	337 T14 0.75 1.0 1.0	354 U14 n*=-0.187 0.0 0.0	371 V14 w*=-0.812 w* setgray	388 W14 n*=-0.187 nnn0* setcmymk	405 X14 w*=-0.812 www* setrgb					
15	015 A15 1.0 0.875 0.875	032 B15 1.0 1.0 0.875	049 C15 1.0 1.0 0.875	066 D15 1.0 1.0 0.875	083 E15 1.0 0.875 1.0	100 F15 1.0 0.875 1.0	117 G15 1.0 0.875 0.875	134 H15 1.0 0.875 0.0	151 I15 1.0 0.875 0.0	168 J15 1.0 0.0 0.0	185 K15 1.0 0.0 0.875	202 L15 1.0 0.0 0.875	219 M15 1.0 0.875 0.875	236 N15 w*=-0.875 w* setgray	253 O15 0.125 0.875 0.875	270 P15 0.125 0.125 0.875	287 Q15 0.875 0.125 0.875	304 R15 1.0 0.0 1.0	321 S15 0.5 1.0 0.5	338 T15 1.0 0.5 1.0	355 U15 n*=-0.125 0.0 0.0	372 V15 w*=-0.875 w* setgray	389 W15 n*=-0.125 nnn0* setcmymk	406 X15 w*=-0.875 www* setrgb					
16	016 A16 1.0 0.937 0.937	033 B16 1.0 1.0 0.937	050 C16 1.0 1.0 0.937	067 D16 1.0 1.0 0.937	084 E16 1.0 0.937 1.0	101 F16 1.0 0.937 1.0	118 G16 1.0 0.937 0.937	135 H16 1.0 0.937 0.0	152 I16 1.0 0.937 0.0	169 J16 1.0 0.0 0.937	186 K16 1.0 0.0 0.937	203 L16 1.0 0.0 0.937	220 M16 1.0 0.937 0.937	237 N16 w*=-0.937 w* setgray	254 O16 0.062 0.937 0.937	271 P16 0.062 0.937 0.937	288 Q16 0.937 0.062 0.937	305 R16 1.0 1.0 0.5	322 S16 0.0 0.0 0.25	339 T16 1.0 1.0 0.75	356 U16 n*=-0.062 0.0 0.0	373 V16 w*=-0.937 w* setgray	390 W16 n*=-0.062 nnn0* setcmymk	407 X16 w*=-0.937 www* setrgb					
17	017 A17 1.0 1.0 1.0	034 B17 1.0 1.0 1.0	051 C17 1.0 1.0 1.0	068 D17 1.0 1.0 1.0	085 E17 1.0 1.0 1.0	102 F17 1.0 1.0 1.0	119 G17 1.0 1.0 1.																						