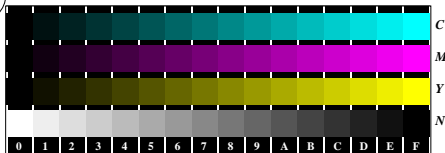


See for similar files: <http://www.ps.bam.de/Fe01/>; www.ps.bam.de/FeHTM
 Technical information: <http://www.ps.bam.de>
 Version 2.1, io=1.1, ColSpX=1

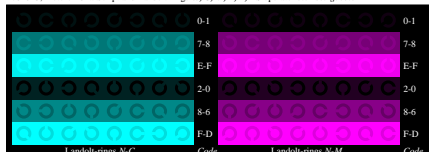
BAM registration: 20080901-Fe01/L01E00N1.PS/.TXT
 application for evaluation and measurement of printer or monitor systems
 BAM material: code=ha4ta



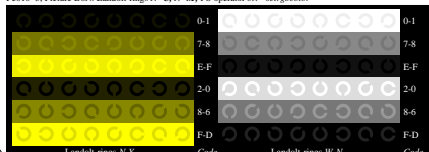
Fe010-1, Picture B4N: 16 equidistant steps N-C, N-M, N-Y, W-N; PS operator olv* setrgbcolor



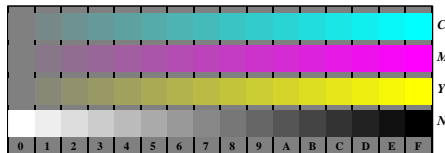
Fe010-3, Picture B5N: Script and Landolt-rings W, C, M, Y, Z; PS operator olv* setrgbcolor



Fe010-5, Picture B6N: Landolt-rings N-C, N-M; PS operator olv* setrgbcolor



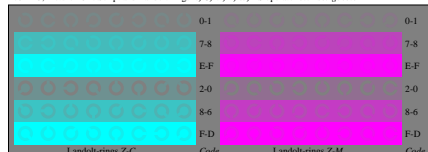
Fe010-7, Picture B7N: Landolt-rings N-Y, W-N; PS operator olv* setrgbcolor



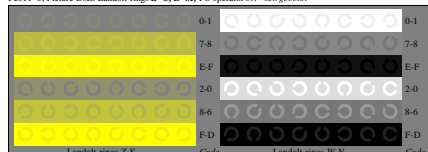
Fe011-1, Picture B4Z: 16 equidistant steps Z-C, Z-M, Z-Y, W-N; PS operator olv* setrgbcolor



Fe011-3, Picture B5Z: Script and Landolt-rings N, C, M, Y, W; PS operator olv* setrgbcolor



Fe011-5, Picture B6Z: Landolt-rings Z-C, Z-M; PS operator olv* setrgbcolor



Fe011-7, Picture B7Z: Landolt-rings Z-Y, W-N; PS operator olv* setrgbcolor

Fe01: Test chart of ISO/IEC 15775 and ISO/IEC TR 24705
 Fig. B4 to B7 similar ISO/IEC-test chart 2, olv* interpretation

input: rgb->olv* setrgbcolor
 output: no change compared to input