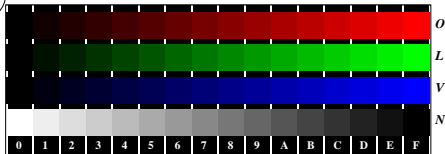


See for similar files: <http://www.ps.bam.de/Fe03/>; [www.ps.bam.de/FeHTM](http://www.ps.bam.de/FeHTM)  
 Technical information: <http://www.ps.bam.de> Version 2.1, io=1,1, ColSpX=1

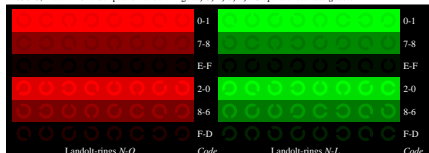
BAM registration: 20080901-Fe03/L03E00N1.PS/.TXT  
 application for evaluation and measurement of printer or monitor systems  
 BAM material: code=ha4ta



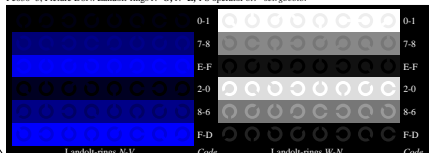
Fe030-1, Picture D4N: 16 equidistant steps N-O, N-L, N-V, W-N; PS operator *olv\** setrgbcolor



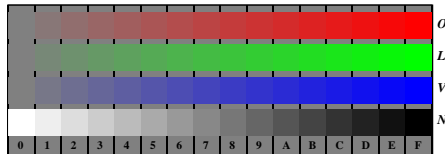
Fe030-3, Picture D5N: Script and Landolt-rings W, O, L, V, Z; PS operator *olv\** setrgbcolor



Fe030-5, Picture D6N: Landolt-rings N-O, N-L; PS operator *olv\** setrgbcolor



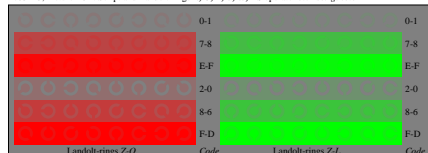
Fe030-7, Picture D7N: Landolt-rings N-V, W-N; PS operator *olv\** setrgbcolor



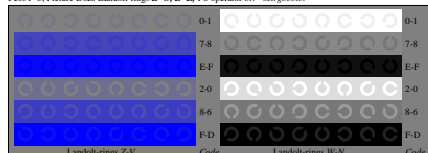
Fe031-1, Picture D4Z: 16 equidistant steps Z-O, Z-L, Z-V, W-N; PS operator *olv\** setrgbcolor



Fe031-3, Picture D5Z: Script and Landolt-rings N, O, L, V, W; PS operator *olv\** setrgbcolor



Fe031-5, Picture D6Z: Landolt-rings Z-O, Z-L; PS operator *olv\** setrgbcolor



Fe031-7, Picture D7Z: Landolt-rings Z-V, W-N; PS operator *olv\** setrgbcolor

Fe03; Test chart of ISO/IEC 15775 and ISO/IEC TR 24705  
 Fig. D4 to D7 similar ISO/IEC-test chart 4, *olv\** interpretation

input: *rgb* → *olv\** setrgbcolor  
 output: no change compared to input