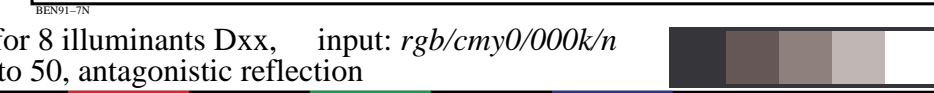
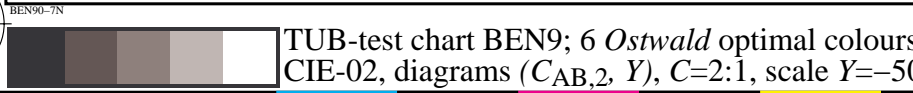
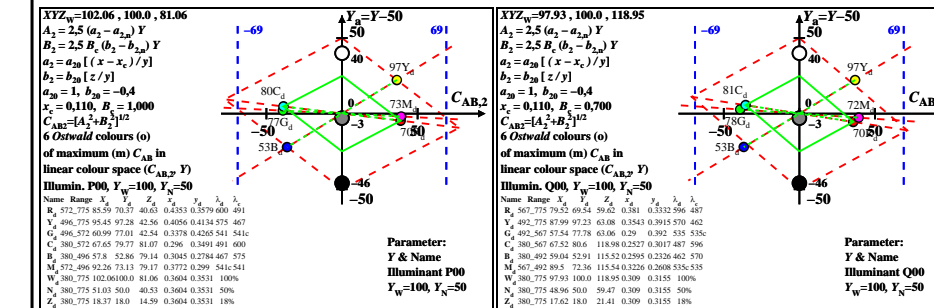
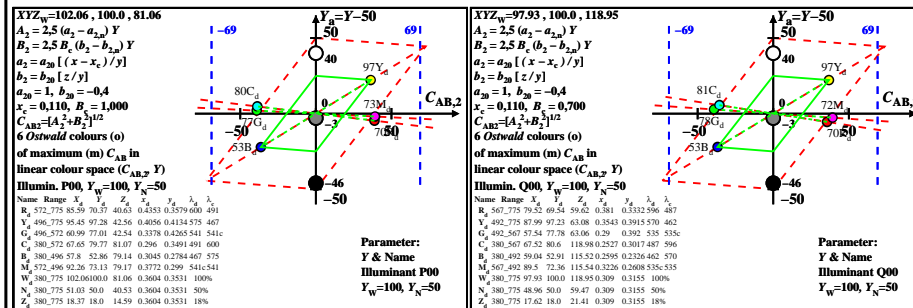
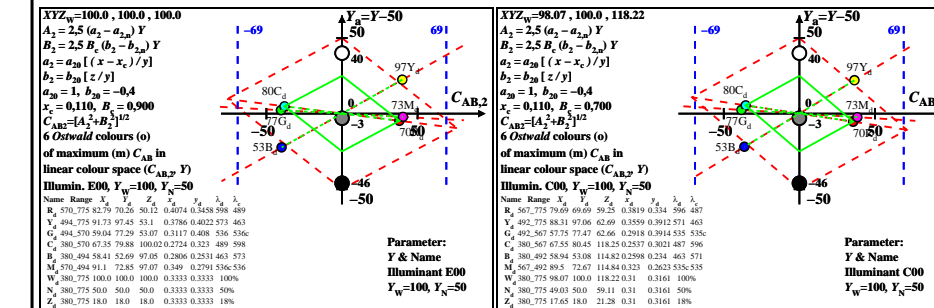
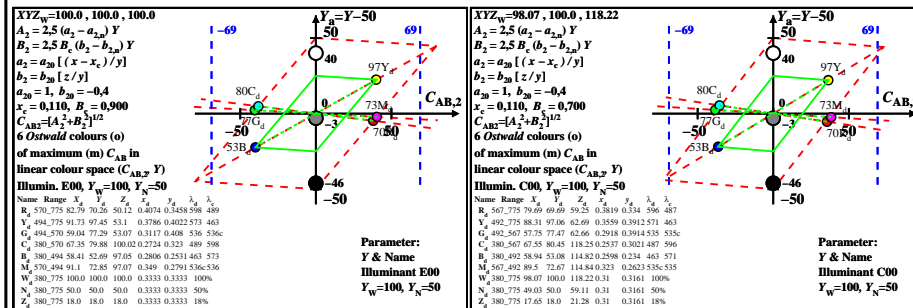
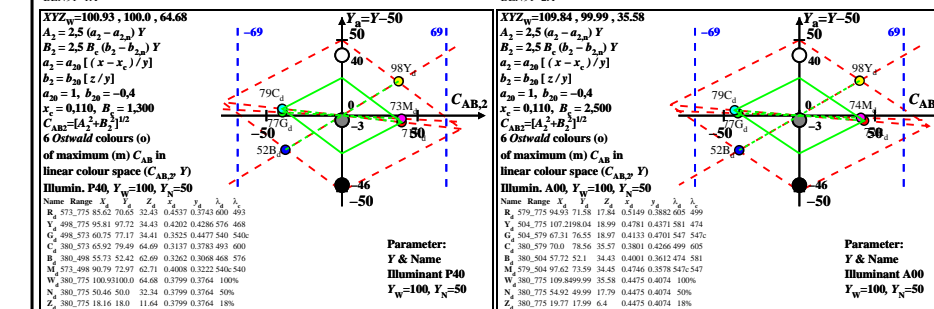
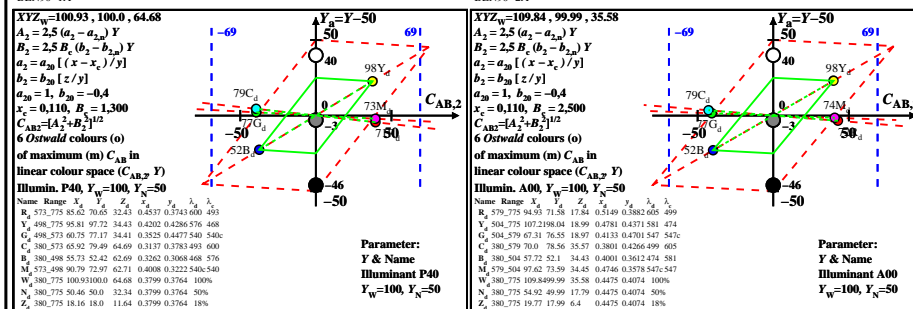
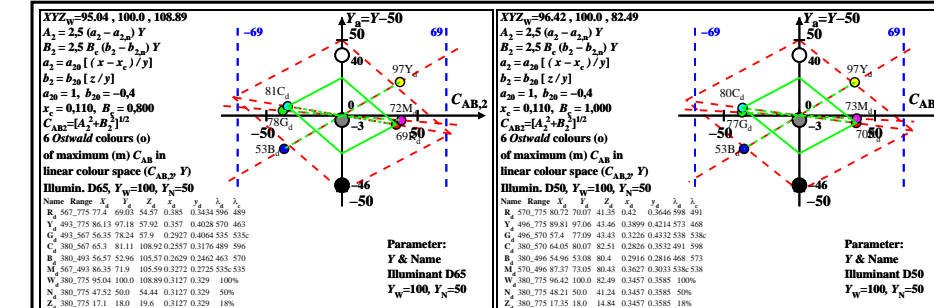
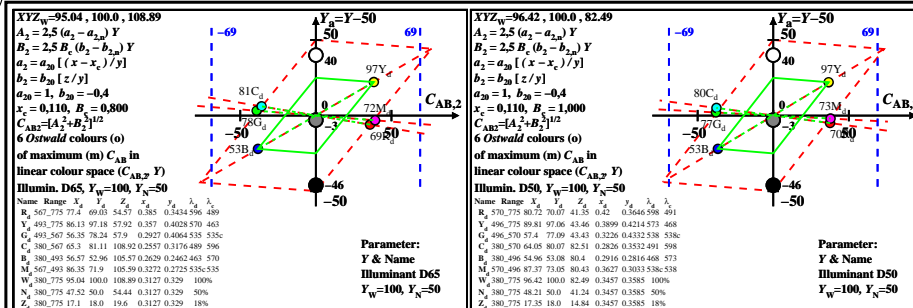


see similar files: http://farbe.li.tu-berlin.de/BEN9/BEN9.HTM  
 technical information: http://farbe.li.tu-berlin.de or http://farbe.li.tu-berlin.de/

TUB registration: 20220301-BEN9/BEN9LONA.TXT /.PS  
 application for evaluation and measurement of display or print output  
 TUB material: code=rha4ta



TUB-test chart BEN9; 6 Ostwald optimal colours for 8 illuminants Dxx, input: rgb/cmy0/000k/n  
 CIE-02, diagrams ( $C_{AB,2}, Y$ ), C=2:1, scale  $Y_c = -50$  to 50, antistigmatic reflection