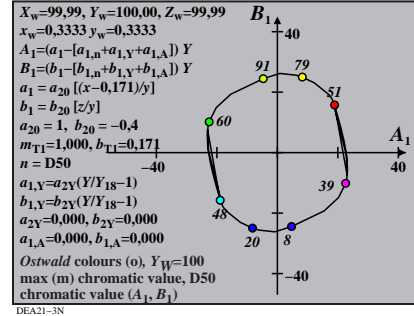
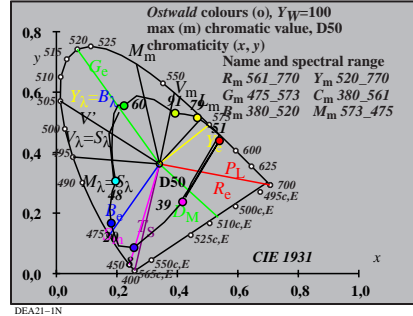
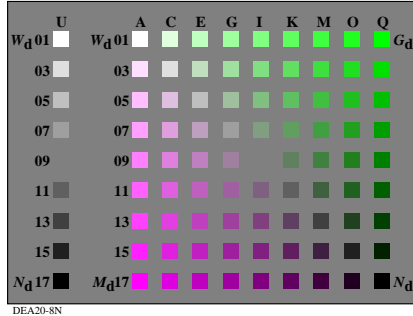
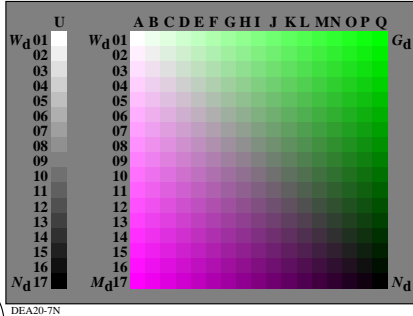
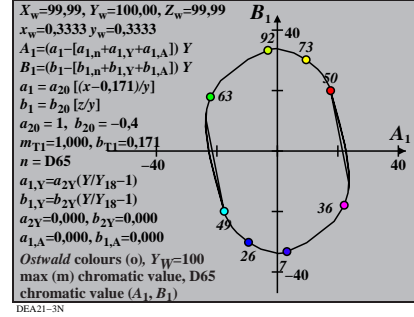
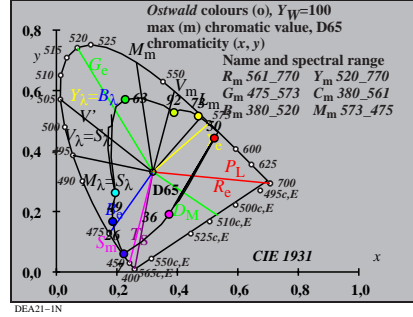
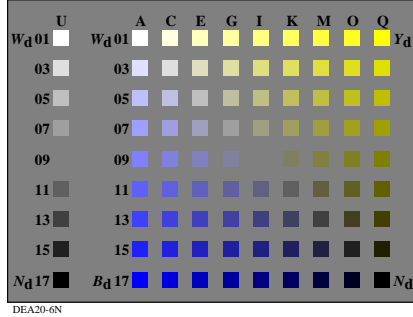
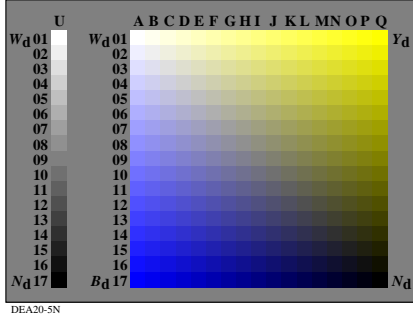
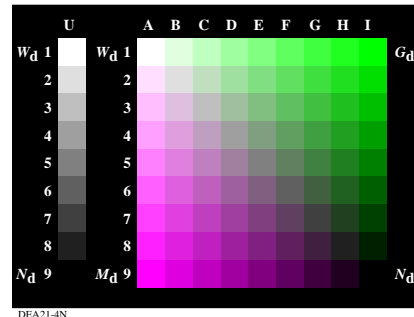
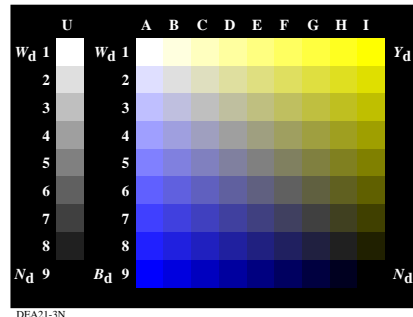
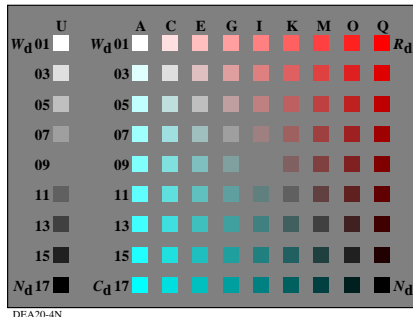
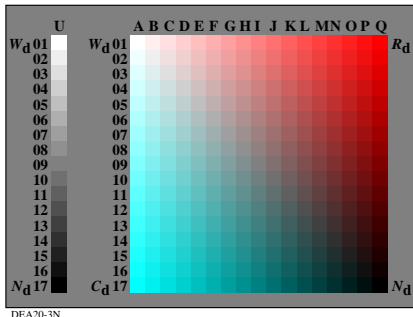
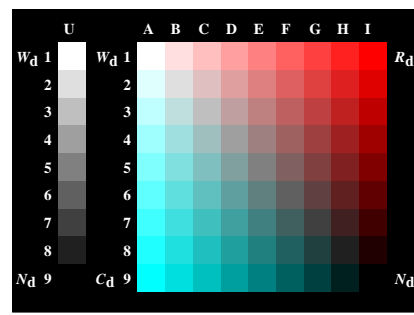
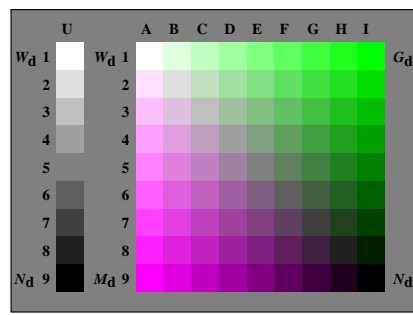
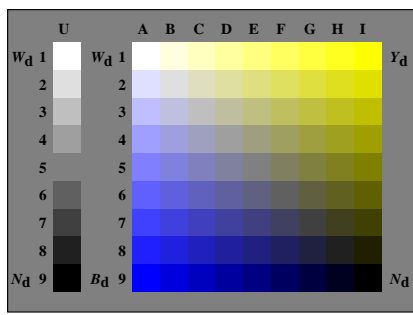
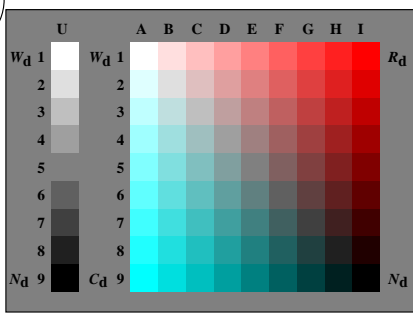


<http://farbe.li.tu-berlin.de/DEA2/DEA2L0NP.PDF> /.PS; only vector graphic VG; start output N: no 3D-linearization (OL) in file (F) or PS-startup (S)

see similar files: <http://farbe.li.tu-berlin.de/DEA2/DEA2.L0NP.PDF> /PS; only vector graphic VG; start output N: no 3D-linearization (OL) in file (F) or PS-startup (S)

TUB registration: 20210901-DEA2/DEA2L0NP.PDF /.PS application for evaluation and measurement of display or print output TUB material: code=rh4ta



TUB-test chart DEA2; Discrimination of adjacent and separated colours
 Ostwald optimal colours in chromaticity diagram (x, y) and chromatic value diagram (A1, B1)

input: rgrgbg

