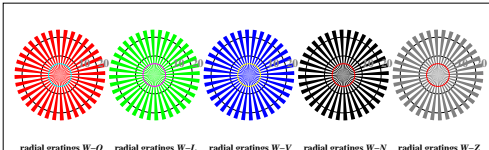


<http://color.li.tu-berlin.de/DEE1/DEE1L0N1.TXT> / PS; start output
 Order information of production company (e.g. Web-site) for ISO-test chart (e.g. code=rha4ra-104)



DEE10-3N, Picture D1: Flower motif, 14 CIE-test colours and 16 grey steps (af); PS operators *settransfer*, 3 *colorimage*

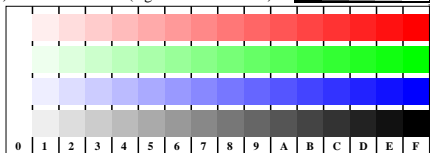


DEE10-5, Picture D2: radial gratings (Siemens-stars) W-O, W-L, W-V, W-N, and W-Z

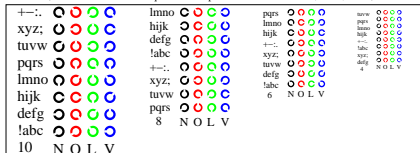


DEE10-7, Picture D3: 14 CIE-test colours according to CIE 13.3 and 16 grey steps

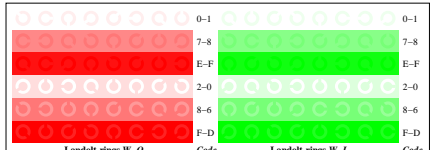
Test chart no. 4 for color copiers, proposal for ISO 15775/ed-2, see
<http://standards.iso.org/iso/15775/ed-2/index.html> or <http://color.li.tu-berlin.de/DED0/15775.html>



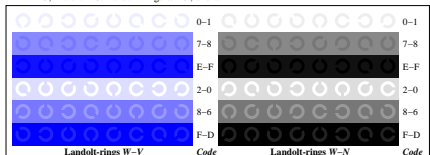
DEE11-1, Picture D4: 16 visual equidistant steps of colour series W-O, W-L, W-V, and W-N



DEE11-3, Picture D5: Script and Landolt-rings in four sizes and four colours N, O, L, and V



DEE11-5, Picture D6: Landolt-rings W-O, and W-L



DEE11-7, Picture D7: Landolt-rings W-V, and W-N

A/IE04/E2-4CS34, DEE1/DEE1.HTM

Technical informations: (e.g. Web-site)
 For archive files according to ISO/IEC 15775:1999, see <http://color.li.tu-berlin.de/A/IE.HTM>

Layout-file version E2-4CS34

ISO identification: 20210515-104
 For similar files for the display output: <http://standards.iso.org/iso/9241/3006/ed-2/index.html>

ISO-reference material: code=rha4ra-104