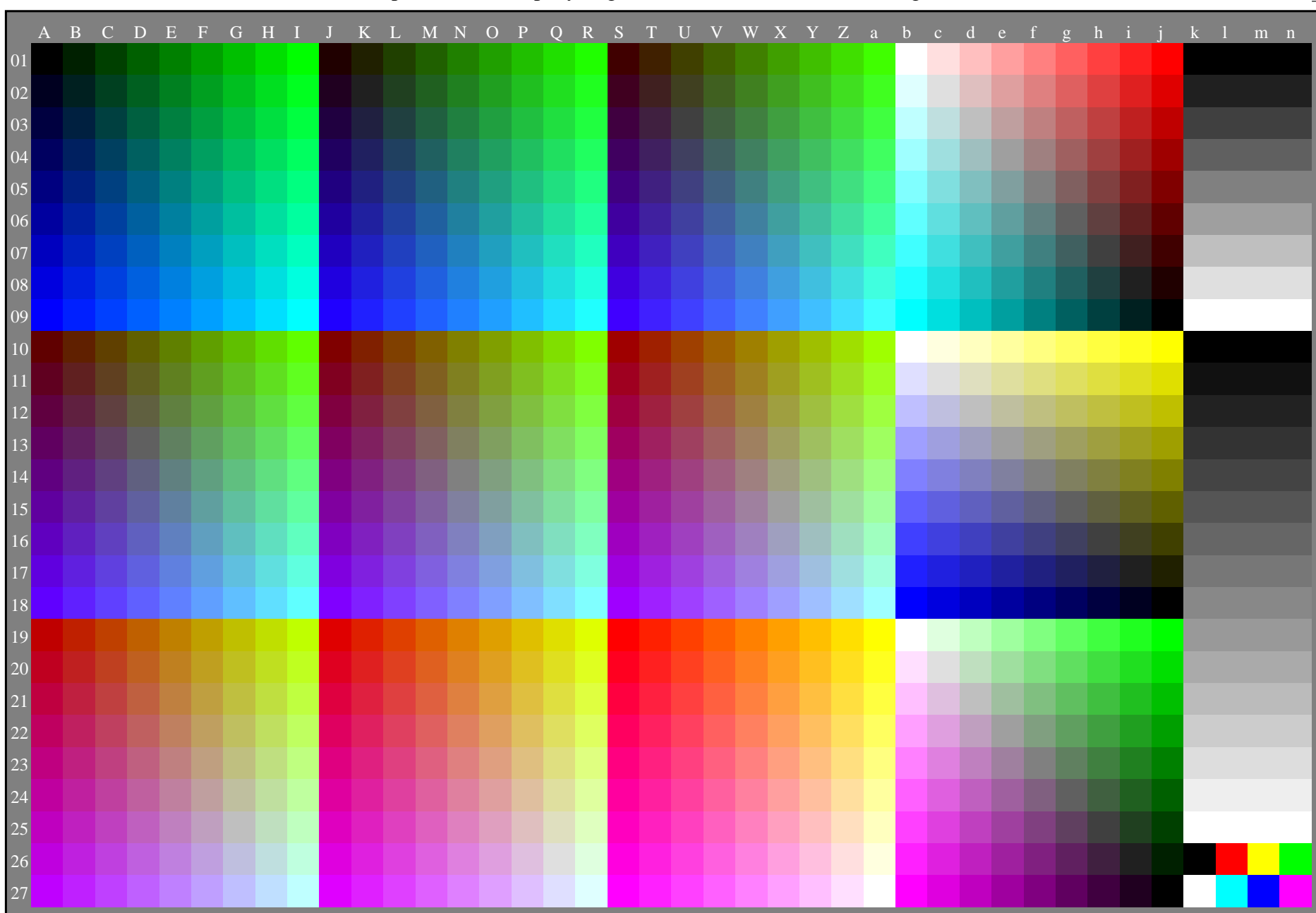


<http://color.li.tu-berlin.de/DEE6/DEE6L0NA.TXT> /PS; start output  
Order information of production company (e.g. Web-site) for ISO-test chart (e.g. code=rha4ra-I04)



Technical informations: (e.g. Web-site)  
For archive files according to ISO/IEC 15775:1999, see <http://color.li.tu-berlin.de/A/IEC.HTM>

Layout-file version E1-4CS34

ISO identification: 20210515-I04  
For similar files for the display output: <http://standards.iso.org/iso/9241/306/ed-2/index.html>

ISO-reference material: code=rha4ra-I04

DEE60-7N Test chart 5 with 1080 colours; 9 or 16 step colour scales; data in column (A-n): **rgb (A-n)**

Test chart no. 5 for color copiers, proposal for ISO 15775/ed-2, see  
<http://standards.iso.org/iso/15775/ed-2/index.html> or <http://color.li.tu-berlin.de/DED0/15775.html>