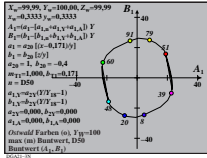
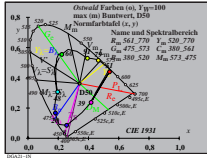
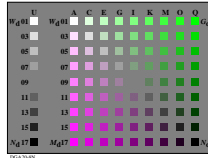
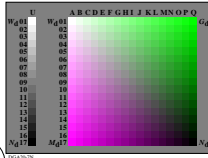
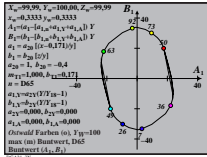
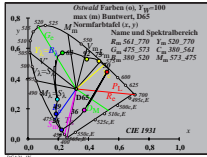
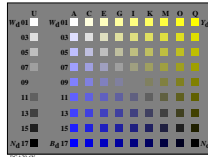
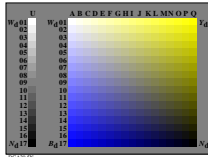
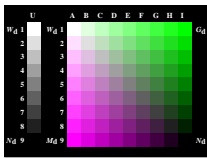
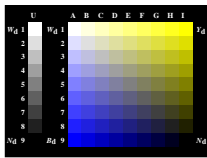
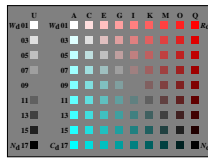
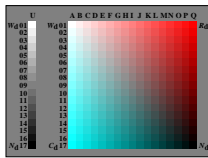
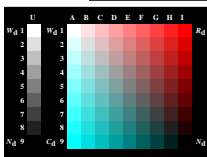
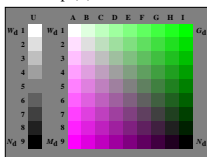
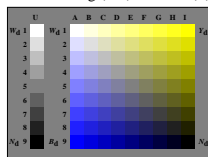
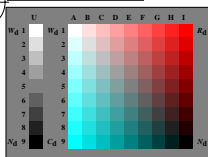


Siehe ähnliche Dateien: <http://farbe.li.tu-berlin.de/DGA2/DGA2L0N1.TXT> /PS  
 Technische Information: <http://farbe.li.tu-berlin.de/oderhttp://color.li.tu-berlin.de>



TUB-Registrierung: 20210901 - DGA2/DGA2L0N1.TXT /PS  
 Anwendung für Bereitstellung und Messung von Display- oder Druck-Ausgabe

TUB-Material: Code=mat44