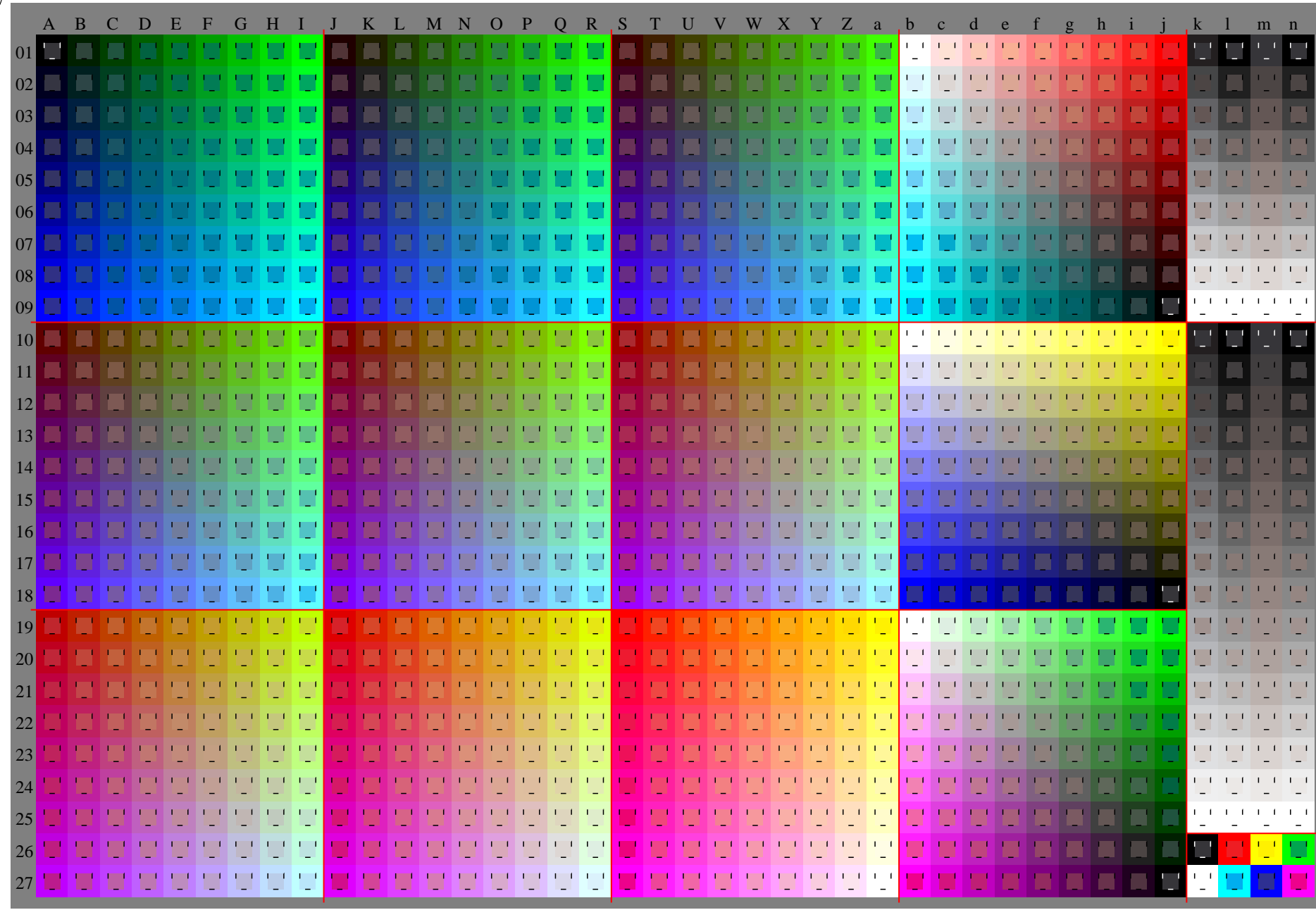
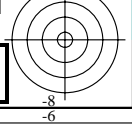
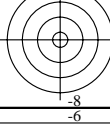
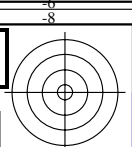
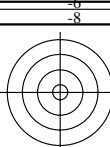


Siehe Original/Kopie: <http://web.me.com/klaus.richter/GG62/GG62P0NA.TXT> /.PS
Technische Information: http://www.ps.bam.de/V_2.1_io=1.1_Cx=1_cfl=0.90_nt=0.18_nx=1.0



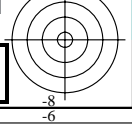
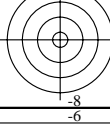
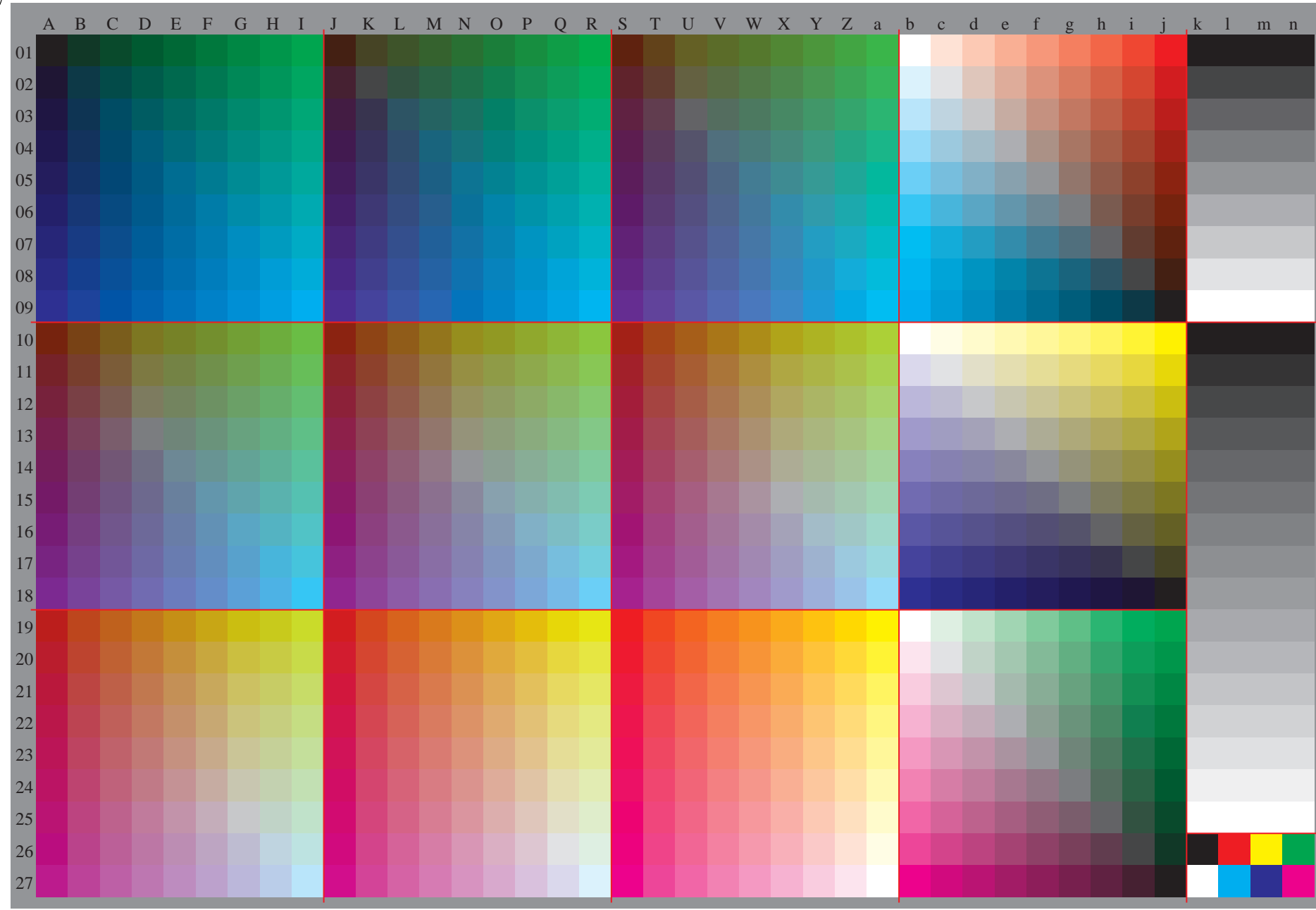
TUB-Registrierung: 20091101-GG62/GG62P0NA.TXT /.PS TUB-Material: Code=rh4ta
Anwendung für Beurteilung und Messung von Drucker- oder Monitorsystemen

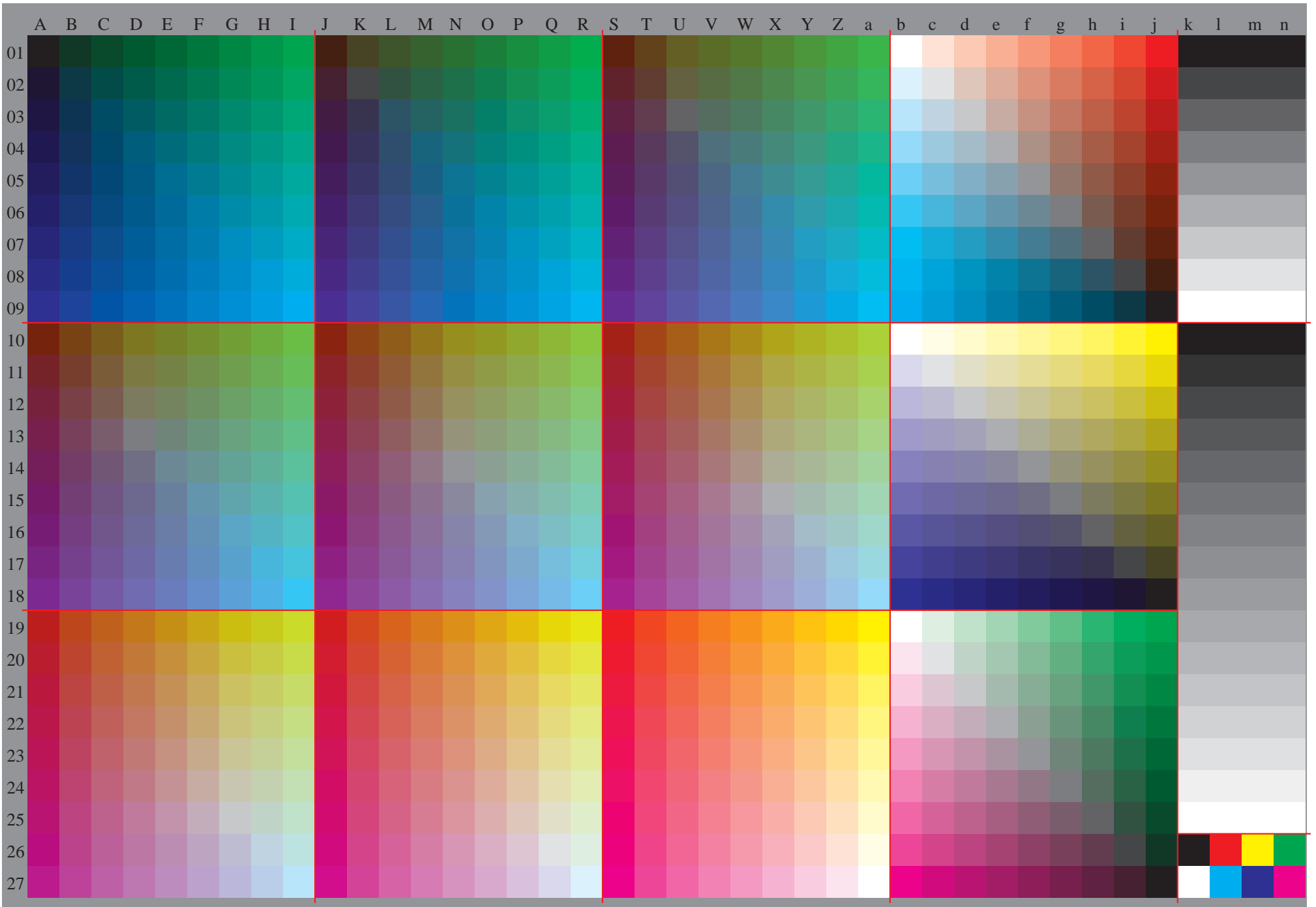


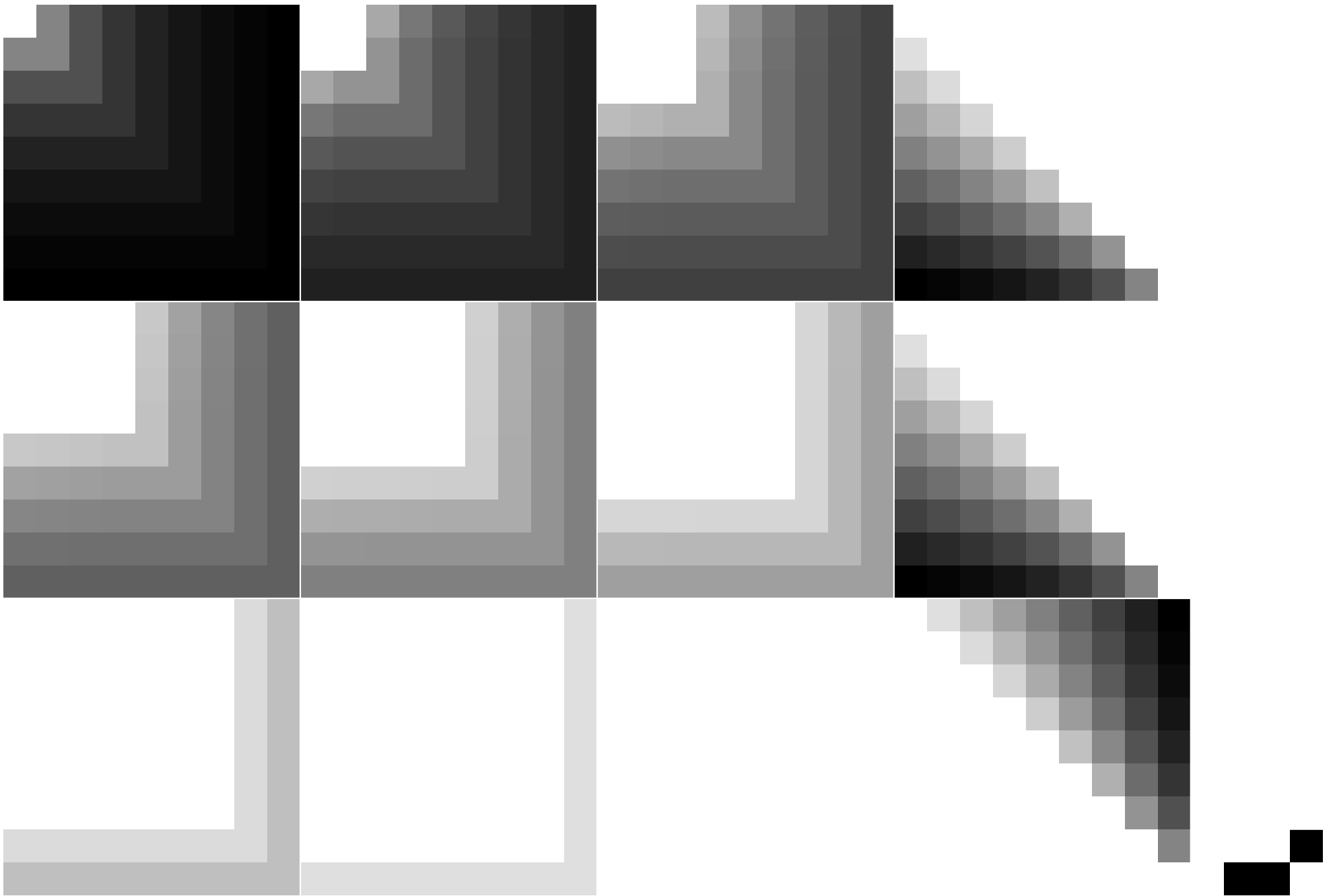


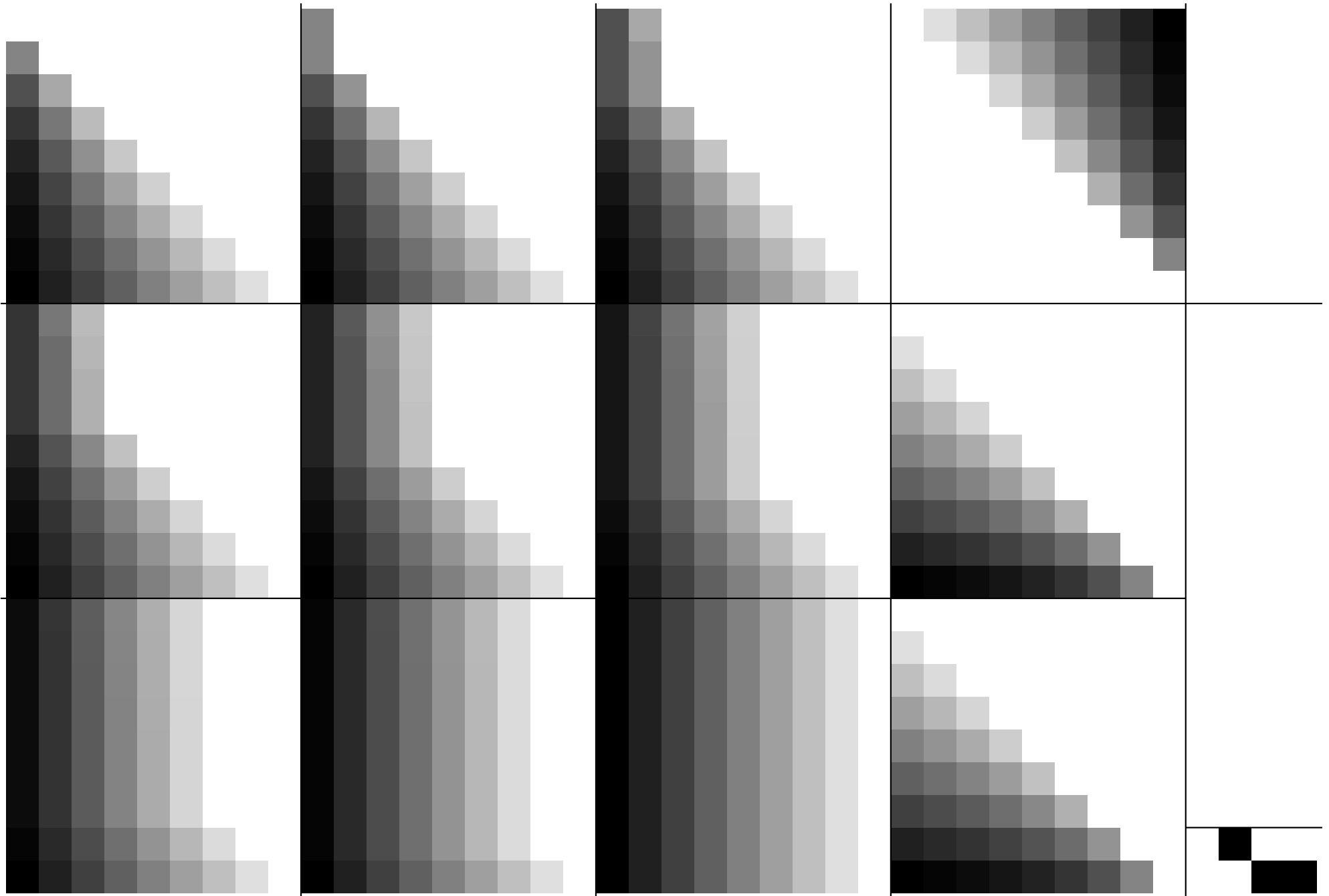
Siehe Original/Kopie: <http://web.me.com/klaus.richter/GG62/GG62P0NA.TXT> /.PS
Technische Information: <http://www.ps.bam.de/V2.1,io=1,1,Cx=1; cfi=0.90; nt=0,18; nx=1.0>

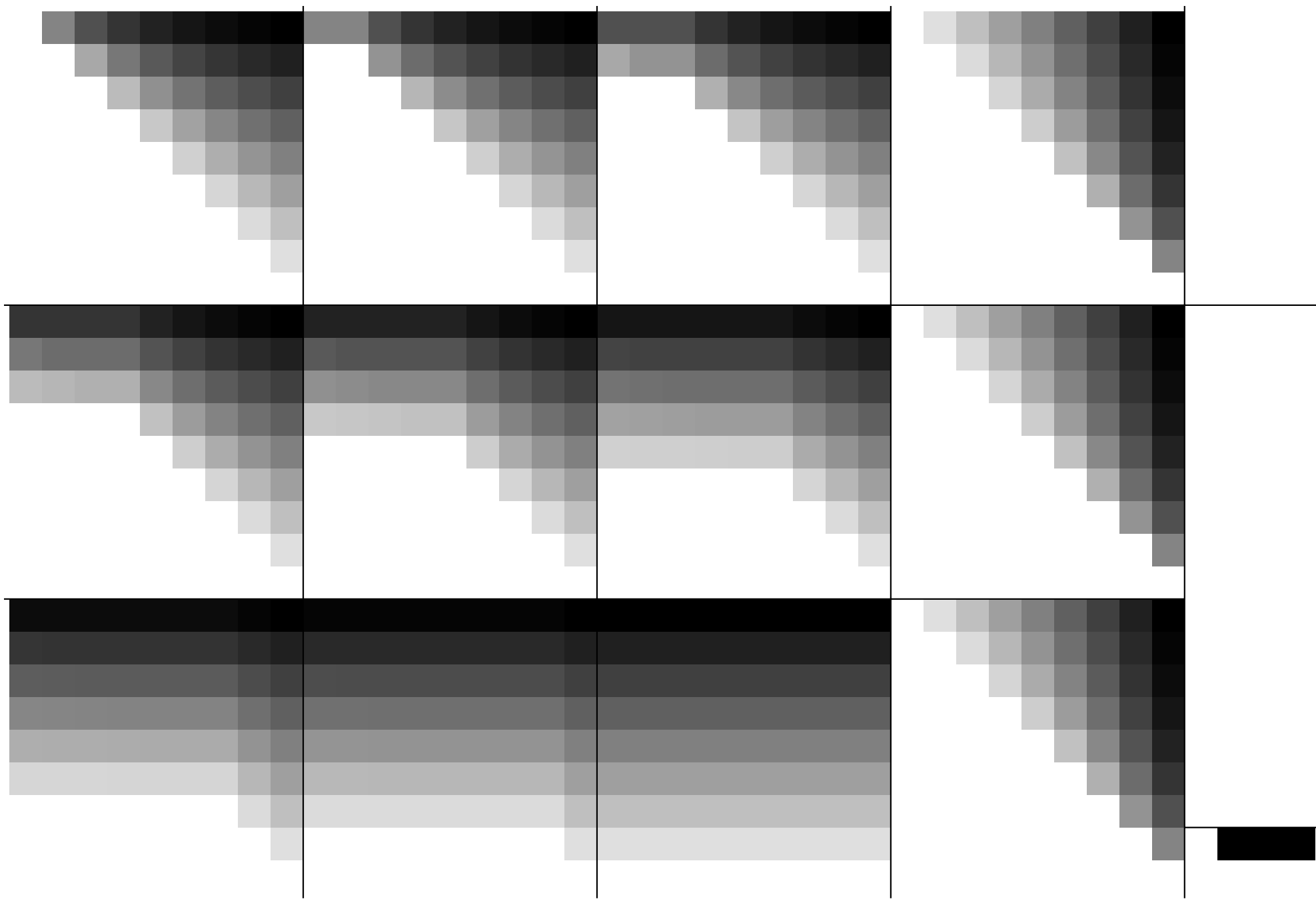
TUB-Registrierung: 20091101-GG62/GG62P0NA.TXT /.PS TUB-Material: Code=rh4ta
Anwendung für Beurteilung und Messung von Drucker- oder Monitorsystemen











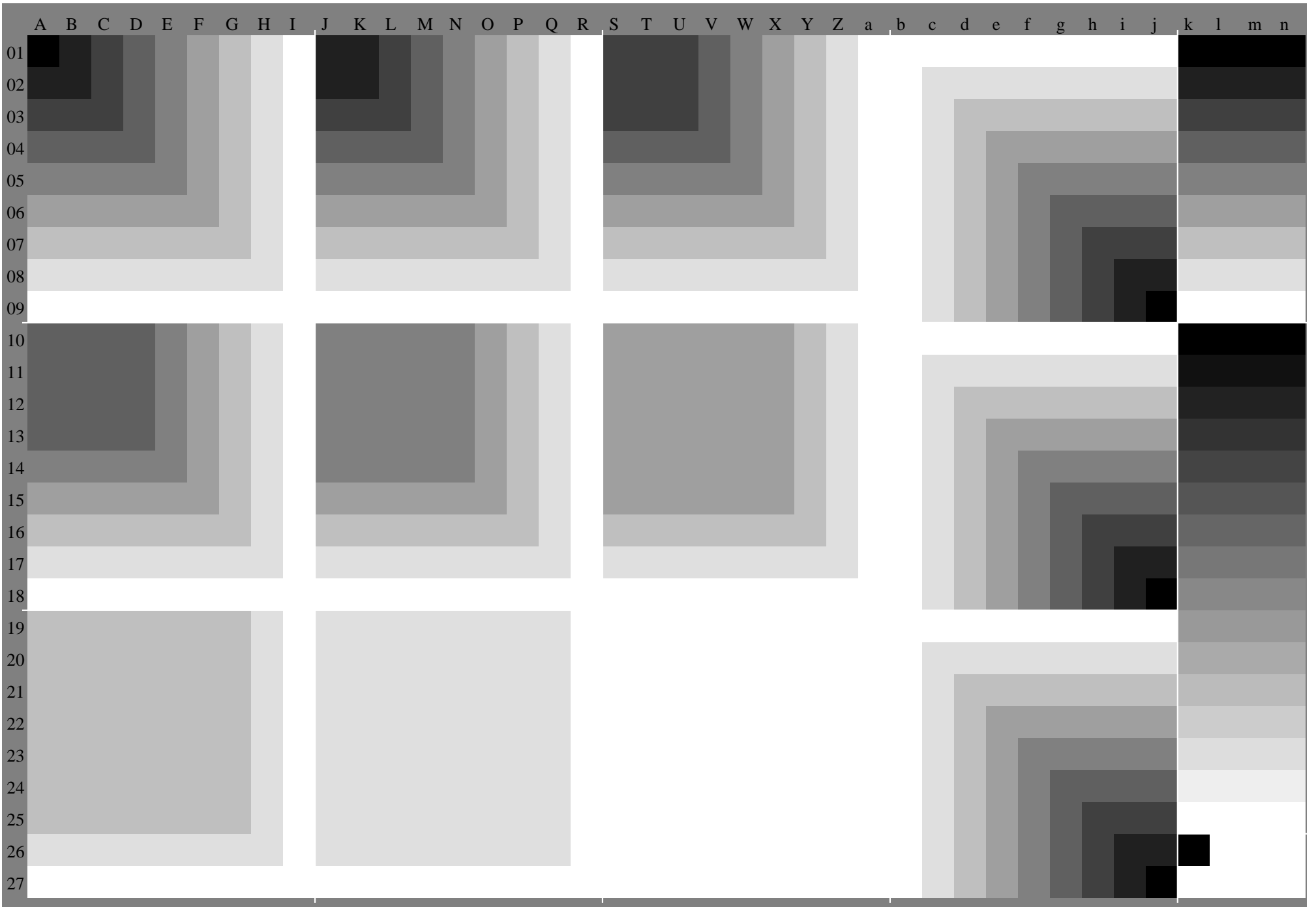


Table with 40 columns (A-Z, a-d) and 27 rows (01-27). Each cell contains numerical data, likely representing a metric or score. The table is bordered by red lines.

Table with 25 columns and 25 rows of numerical data. Each column contains a sequence of 25 values, mostly 0, 32, 64, 128, 159, 191, and 255, arranged in a grid-like pattern.

%LAB*a,CIE O:47.0 55.8 34.7 Y:87.8 -12.5 76.3 L:56.6 -58.5 31.6 C:52.1 -30.6 -35.2 V:33.8 21.7 -38.7 M:46.4 64.0 -11.7 N:18.5 0.0 0.0 W:93.0 0.0 0.0

Table with 48 columns and 50 rows of numerical data. Columns are labeled with color coordinates (%LAB*a,CIE, %XYZa, CIE) and various values (O, Y, L, C, V, M, N, W). Each cell contains a numerical value, often with multiple values separated by spaces.

