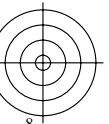
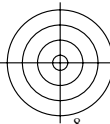
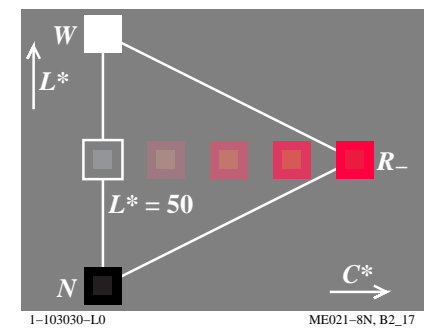
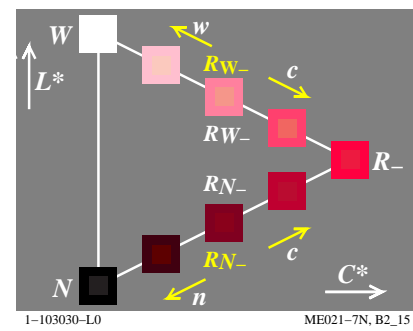
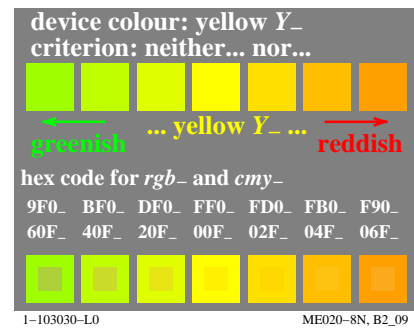
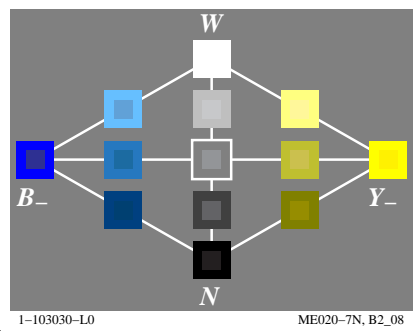
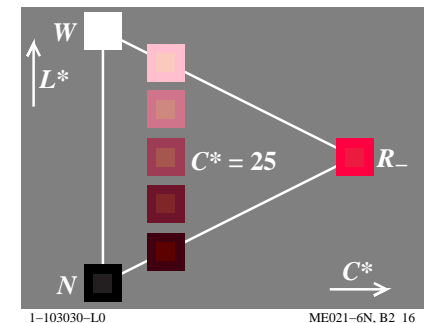
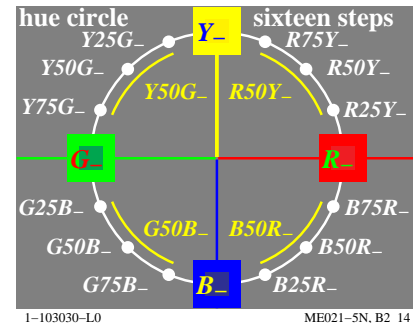
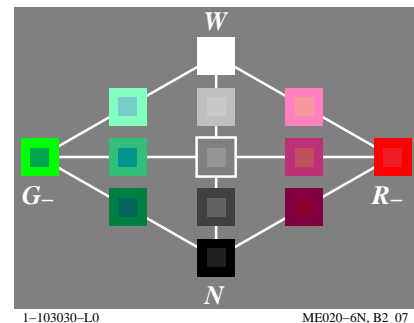
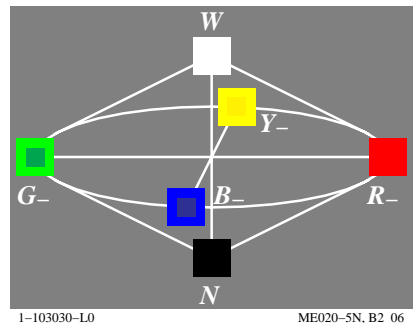
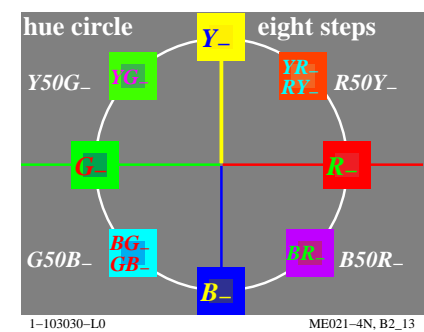
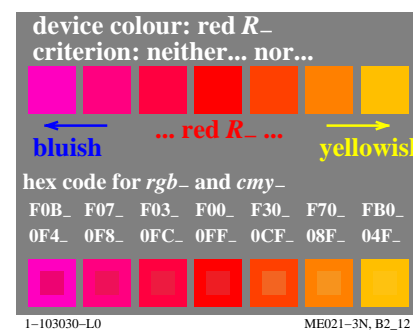
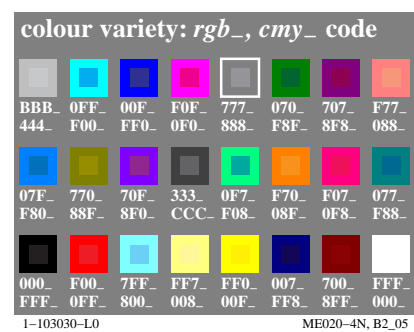
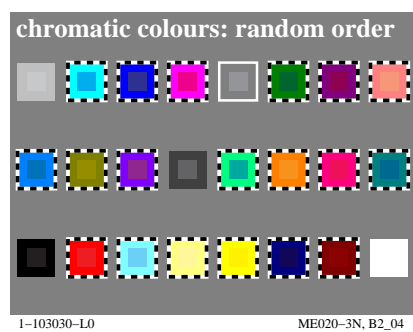
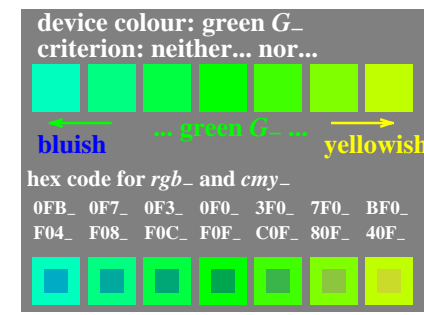
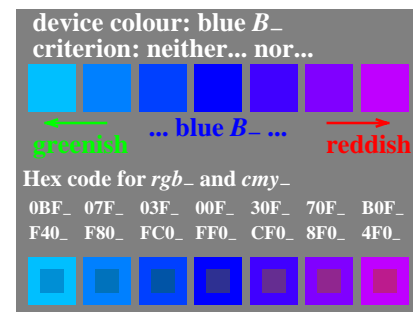
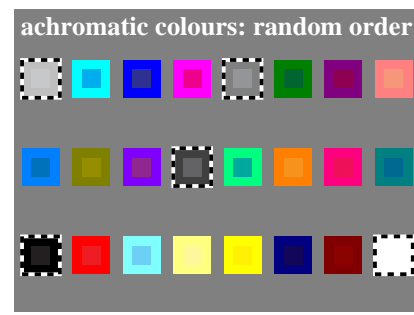
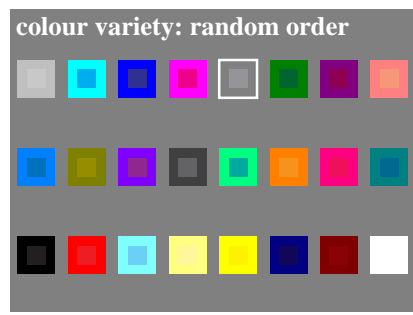
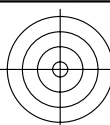


see similar files: <http://130.149.60.45/~farbmetrik/ME02/ME02.HTM>  
technical information: <http://www.ps.bam.de> or <http://130.149.60.45/~farbmetrik>

TUB registration: 20130201-ME02/ME02LOFP.PDF /.PS  
application for measurement of display output

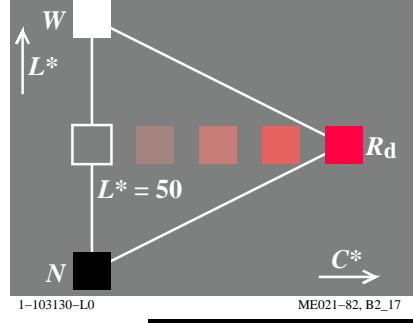
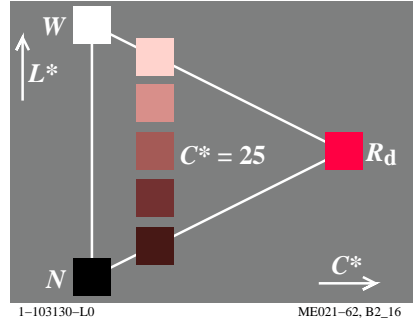
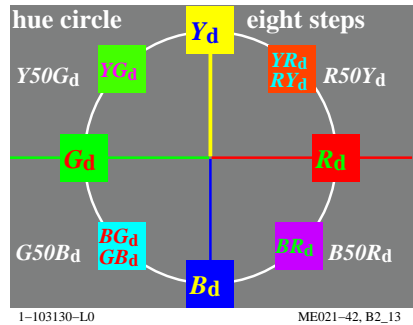
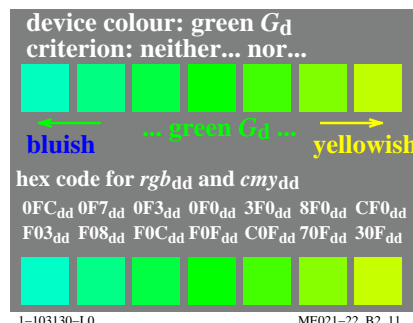
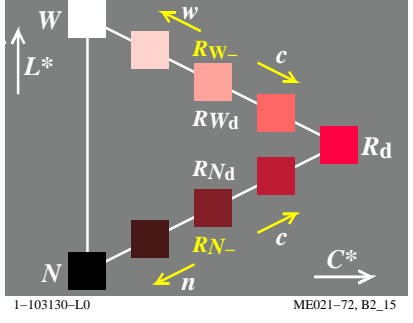
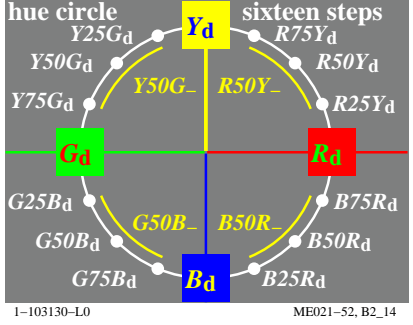
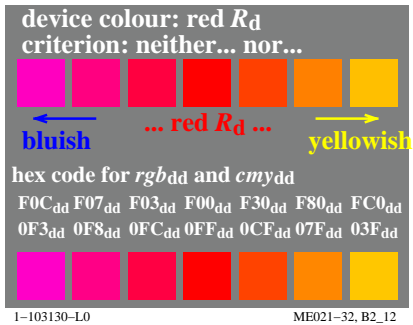
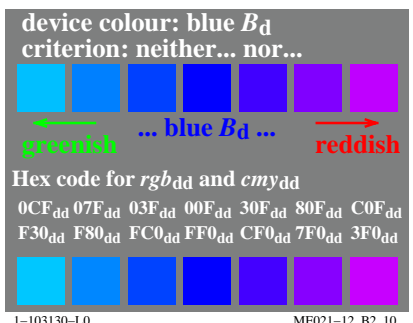
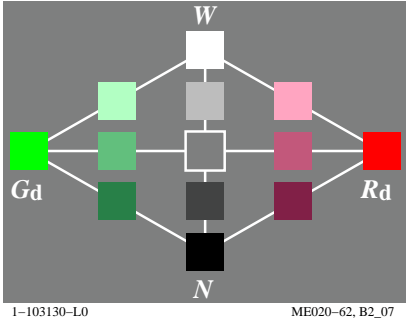
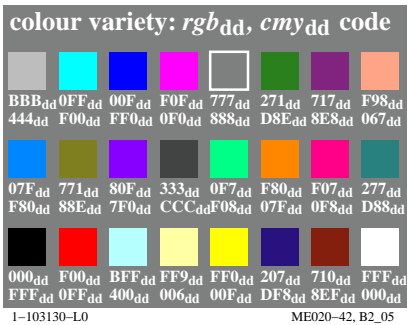
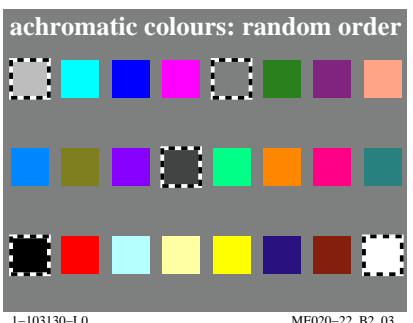
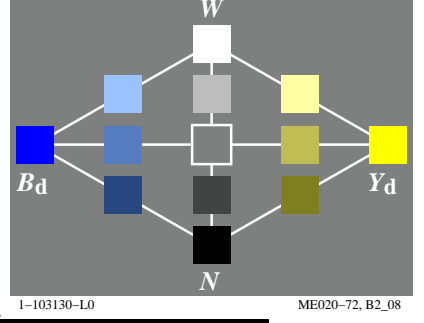
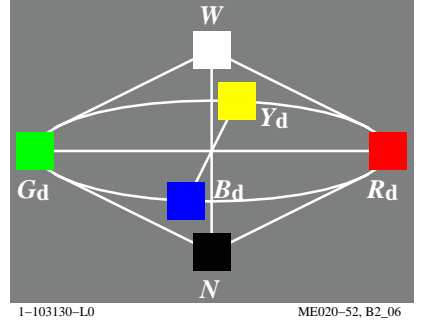
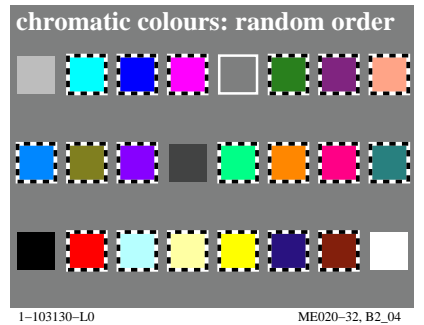
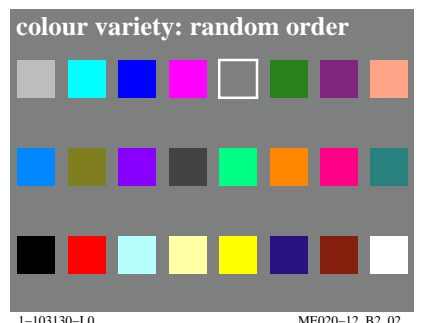
TUB material: code=rh4ta



see similar files: <http://130.149.60.45/~farbmetrik/ME02/ME02.HTM>  
technical information: <http://www.ps.bam.de> or <http://130.149.60.45/~farbmetrik>

TUB registration: 20130201-ME02/ME02LOFP.PDF /.PS  
application for measurement of display output, no separation

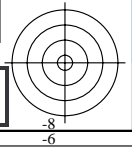
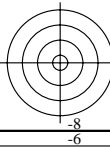
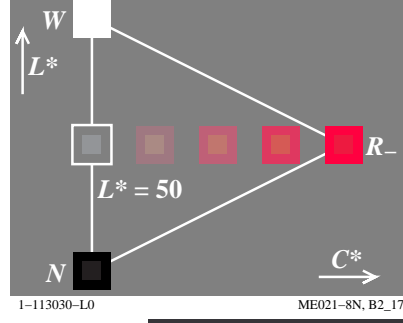
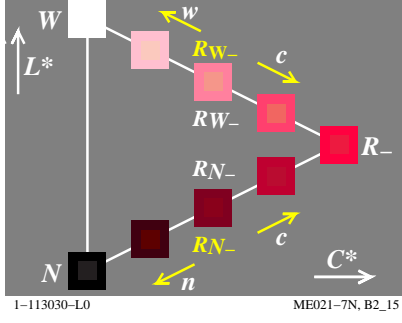
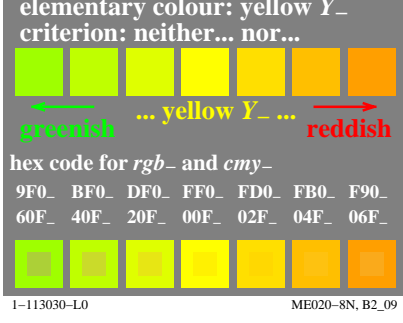
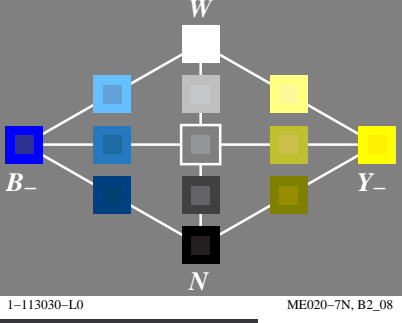
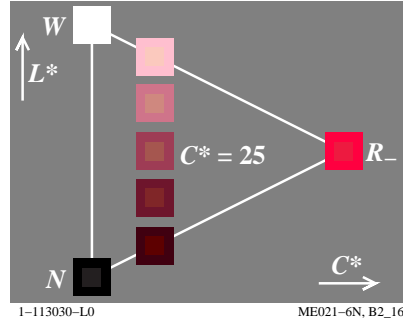
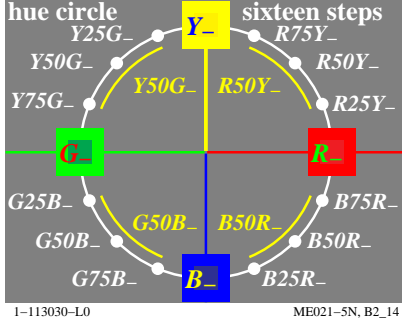
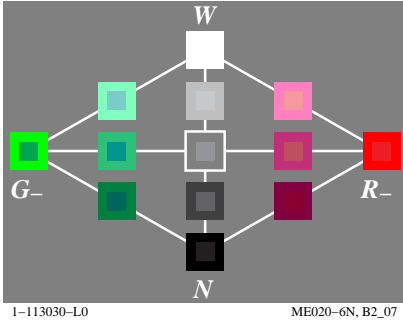
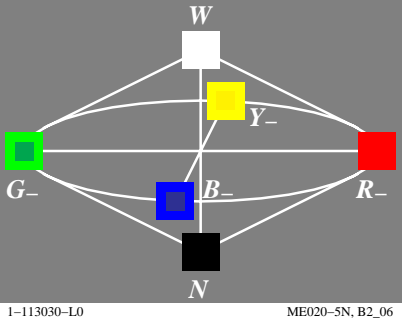
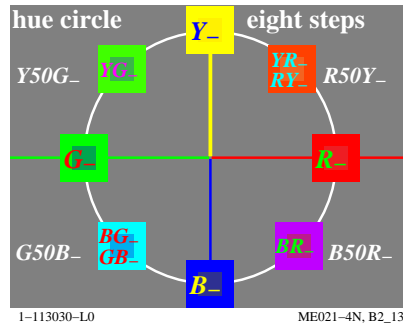
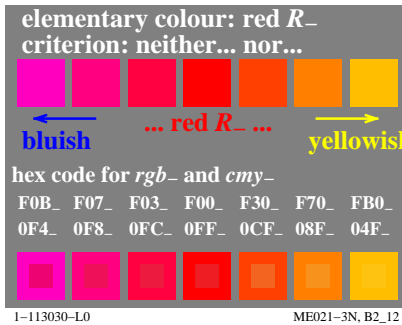
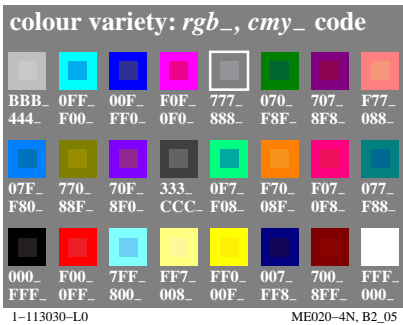
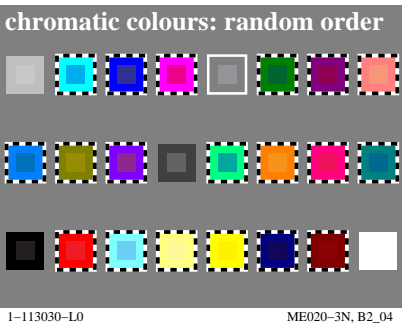
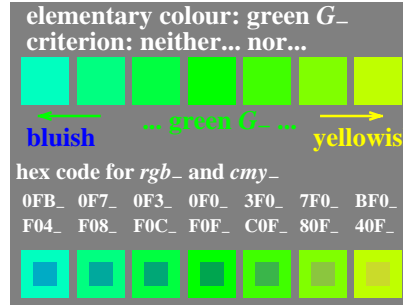
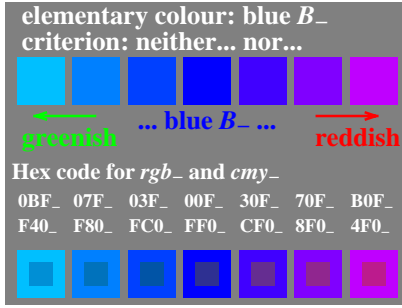
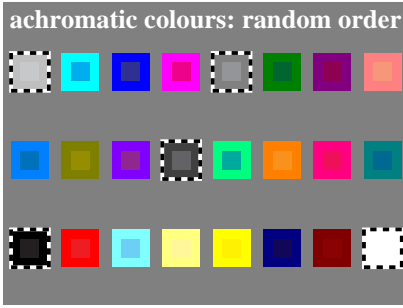
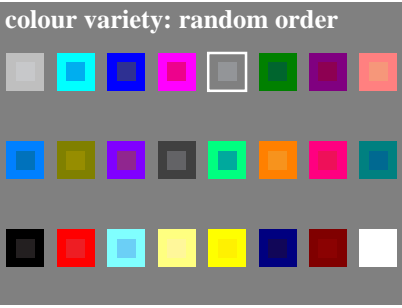
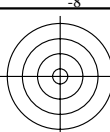
TUB material: code=rh4ta



see similar files: <http://130.149.60.45/~farbmetrik/ME02/ME02.HTM>  
technical information: <http://www.ps.bam.de> or <http://130.149.60.45/~farbmetrik>

TUB registration: 20130201-ME02/ME02LOFP.PDF /PS  
application for measurement of display output

TUB material: code=rh4ta



see similar files: <http://130.149.60.45/~farbmetrik/ME02/ME02.HTM>  
technical information: <http://www.ps.bam.de> or <http://130.149.60.45/~farbmetrik>

TUB registration: 20130201-ME02/ME02LOFP.PDF /.PS  
application for measurement of display output, no separation

TUB material: code=rh4ta

