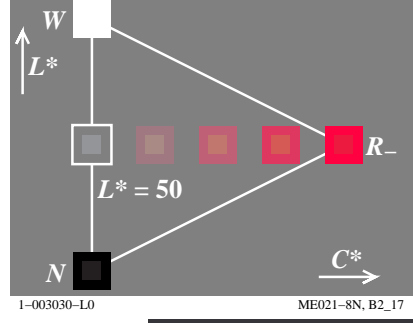
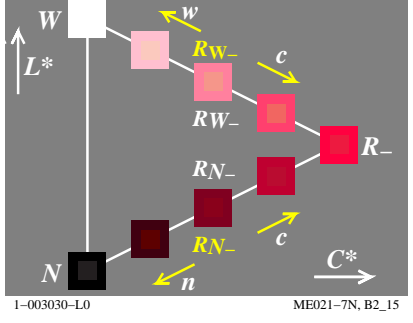
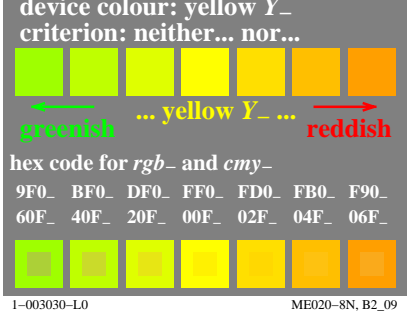
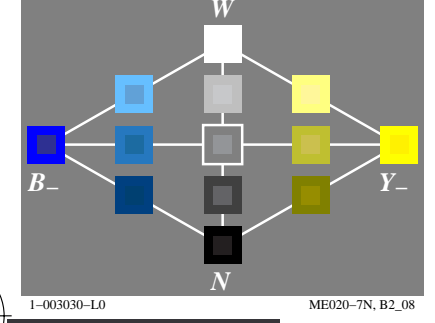
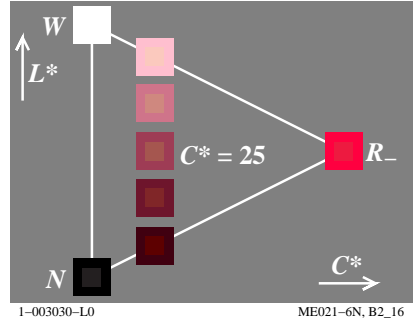
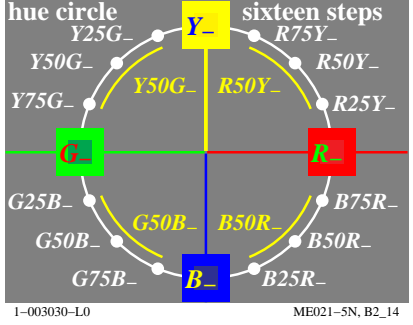
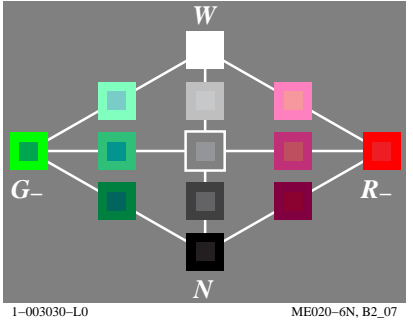
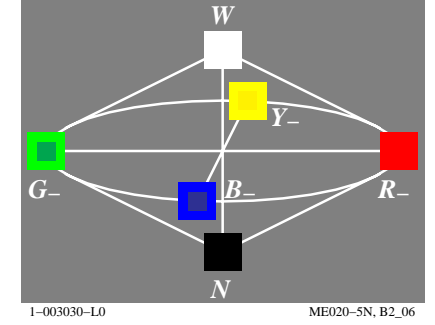
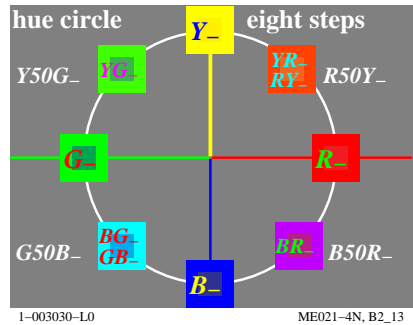
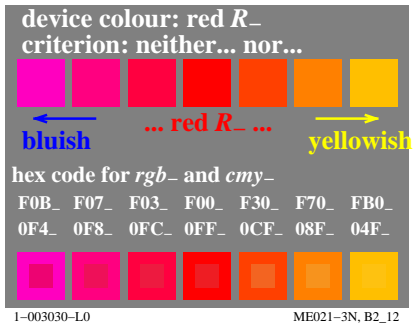
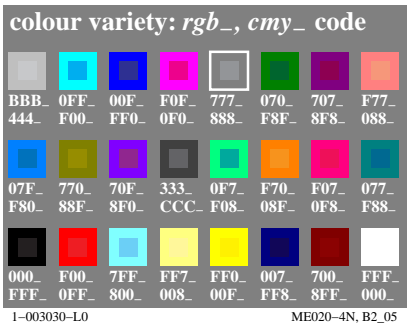
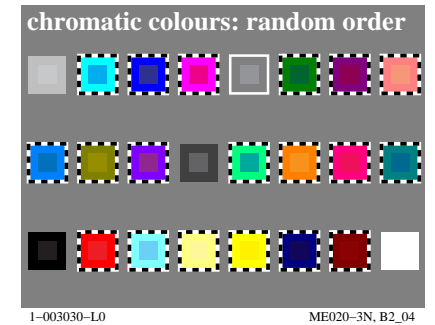
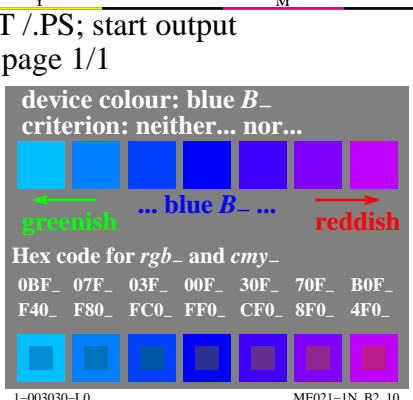
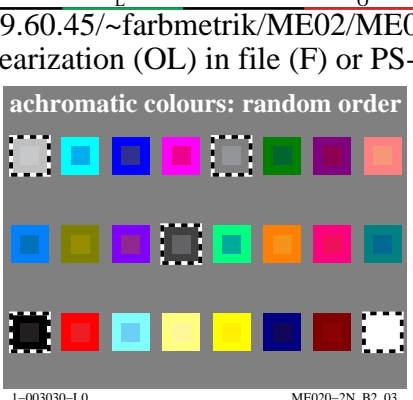
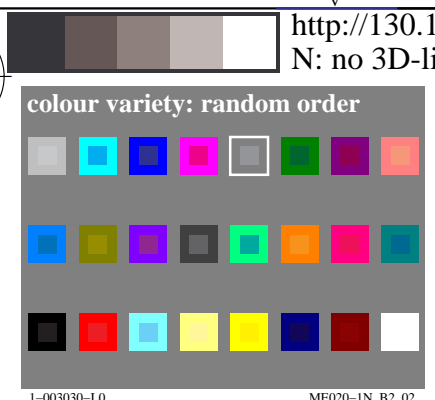
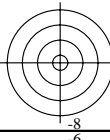
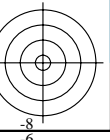
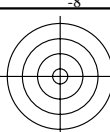


http://130.149.60.45/~farbmetrik/ME02/ME02L0N0.TXT /.PS; start output
N: no 3D-linearization (OL) in file (F) or PS-startup (S), page 1/1

see similar files: <http://130.149.60.45/~farbmetrik/ME02/ME02.HTM>
technical information: <http://www.ps.bam.de> or <http://130.149.60.45/~farbmetrik>

TUB registration: 20130201-ME02/ME02L0N0.TXT /.PS
application for measurement of display output

TUB material: code=rh4ta



TUB-test chart ME02; Computer graphics and colorimetry
Image series ME02, 3D=0, de=0

input: *rgb/cmYk* -> *rgb/cmYk*
output: no change

