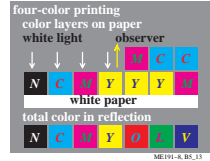
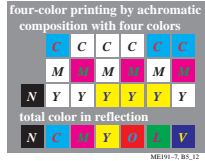
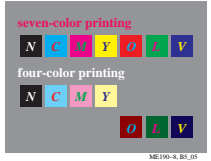
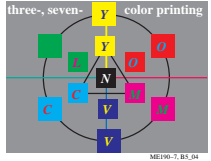
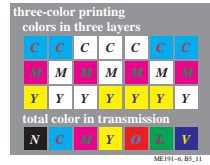
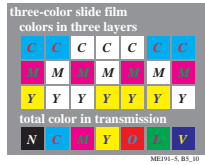
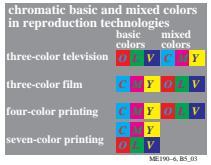
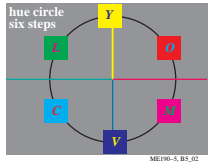
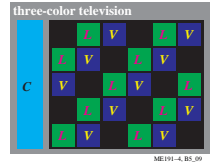
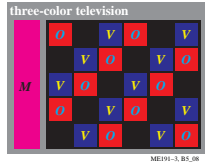
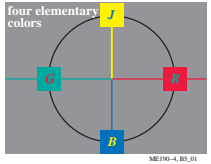
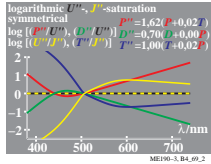
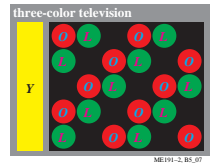
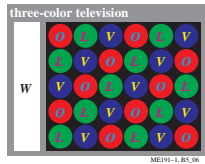
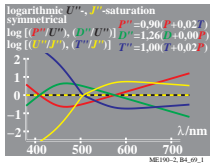
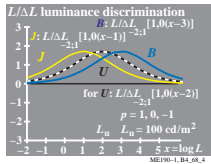


See original or copy: http://web.me.com/klaus_richter/ME19/ME19L0N1.TXT /PS
 Technical information: <http://www.ps.bam.de> or <http://130.149.60.45/~farbmetrik>



TUB registration: 20101101-ME19/ME19L0N1.TXT /PS
 application for measurement of printer or monitor systems

TUB material: code=thata