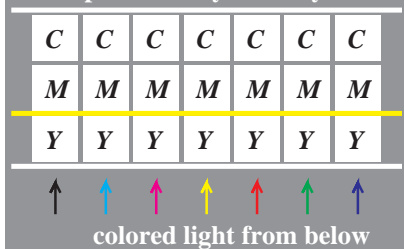
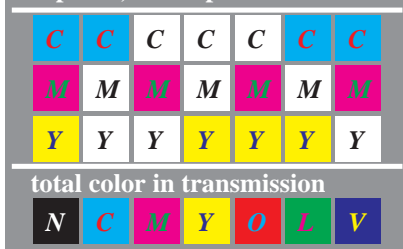


three-layer slide film
unexposed with yellow layer



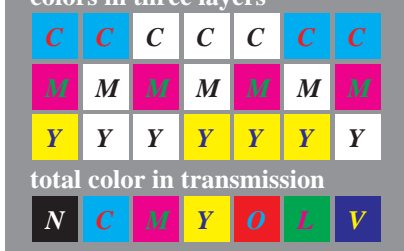
ME200-1, B5_14_1

three-layer slide film
exposed, developed

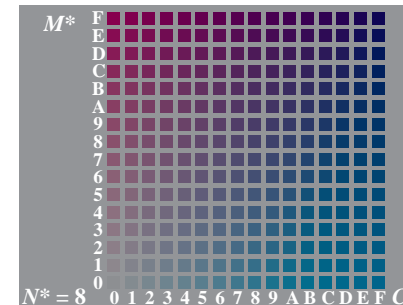
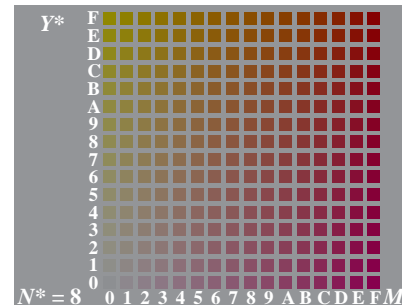
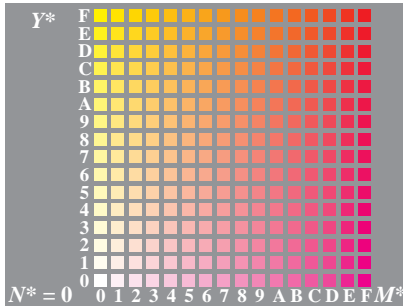


ME200-2, B5_14_2

three-color printing
colors in three layers

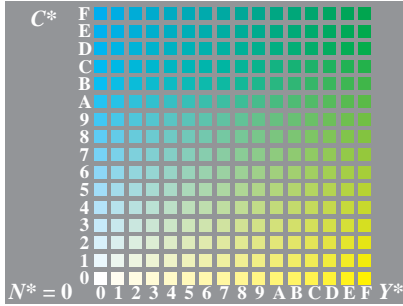
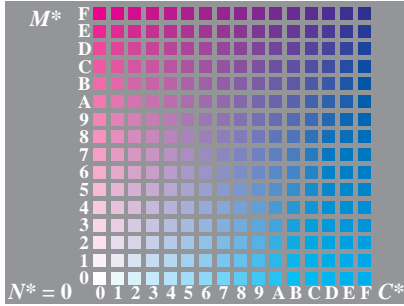


ME200-3, B5_19



colorness	color number	luminous value
$O^* L^* V^*$	$n \quad h^* \quad d$	$Y (Y_W = 81 \text{ print})$
15,15,15	7 FFF*	4095 81-(81/81)
13,13,13	- DDD*	3549 81-(64/81)
11,11,11	- BBB*	3003 81-(49/81)
9, 9, 9	- 999*	2457 81-(36/81)
7, 7, 7	8 777*	1911 81-(25/81)
5, 5, 5	- 555*	1365 81-(16/81)
3, 3, 3	- 333*	819 81-(9/81)
1, 1, 1	- 111*	273 81-(4/81)
0, 0, 0	0 000*	0 81-(2/81)

ME201-4, B5_23_1

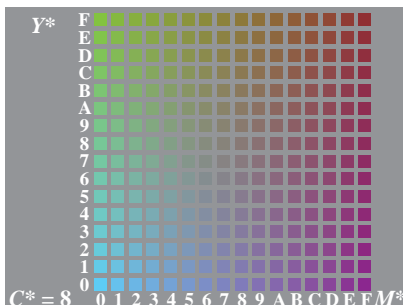
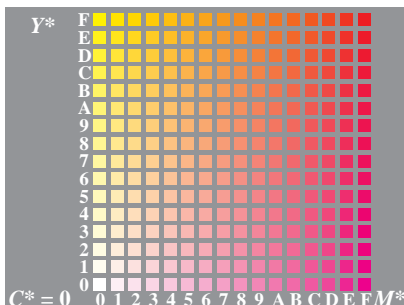


colorness	color number	luminous value
$O^* L^* V^*$	$n \quad h^* \quad d$	$Y (Y_L = 16 \text{ print})$
0,15, 0	2 0F0*	240 16-(81/81)
0,13, 0	- 0D0*	208 16-(64/81)
0,11, 0	- 0B0*	176 16-(49/81)
0, 9, 0	- 090*	144 16-(36/81)
0, 7, 0	10 070*	112 16-(25/81)
0, 5, 0	- 050*	80 16-(16/81)
0, 3, 0	- 030*	48 16-(9/81)
0, 1, 0	- 010*	16 16-(4/81)
0, 0, 0	0 000*	0 81-(2/81)

ME201-5, B5_23_2

colorness	color number	luminous value
$O^* L^* V^*$	$n \quad h^* \quad d$	$Y (Y_Y = 76 \text{ print})$
15,15, 0	3 FF0*	4080 76-(81/81)
13,13, 0	- DD0*	3536 76-(64/81)
11,11, 0	- BB0*	2992 76-(49/81)
9, 9, 0	- 990*	2448 76-(36/81)
7, 7, 0	11 770*	1904 76-(25/81)
5, 5, 0	- 550*	1360 76-(16/81)
3, 3, 0	- 330*	816 76-(9/81)
1, 1, 0	- 110*	272 76-(4/81)
0, 0, 0	0 000*	0 81-(2/81)

ME201-6, B5_24_1



colorness	color number	luminous value
$O^* L^* V^*$	$n \quad h^* \quad d$	$Y (Y_M = 17 \text{ print})$
15, 0,15	5 F0F*	3855 17-(81/81)
13, 0,13	- D0D*	3341 17-(64/81)
11, 0,11	- B0B*	2827 17-(49/81)
9, 0, 9	- 909*	2313 17-(36/81)
7, 0, 7	13 707*	1799 17-(25/81)
5, 0, 5	- 505*	1285 17-(16/81)
3, 0, 3	- 303*	771 17-(9/81)
1, 0, 1	- 101*	257 17-(4/81)
0, 0, 0	0 000*	0 81-(2/81)

ME201-7, B5_24_2

colorness	color number	luminous value
$O^* L^* V^*$	$n \quad h^* \quad d$	$Y (Y_C = 21 \text{ print})$
0,15,15	6 0FF*	255 21-(81/81)
0,13,13	- 0DD*	221 21-(64/81)
0,11,11	- 0BB*	187 21-(49/81)
0, 9, 9	- 099*	153 21-(36/81)
0, 7, 7	14 077*	119 21-(25/81)
0, 5, 5	- 055*	85 21-(16/81)
0, 3, 3	- 033*	51 21-(9/81)
0, 1, 1	- 011*	17 21-(4/81)
0, 0, 0	0 000*	0 81-(2/81)

ME201-8, B5_24_3