

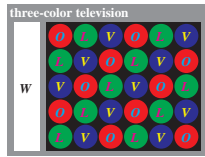
http://130.149.60.45/~farbmetrik/ME21/ME21LON1.TXT /PS; start device N: No Output Linearization (OL) data in File (F), Startup (S) or Output (D)

colorness	color number	luminous value
$O^* L^* V^* n h^* d$		$Y (Y_C = 76 \text{ print})$
15,15,15	7 FFF*	4095 76+5(81/81)
15,15,13	- FFD*	4093 76+5(64/81)
15,15,11	- FFB*	4091 76+5(49/81)
15,15, 9	- FF9*	4089 76+5(36/81)
15,15, 7	- FF7*	4087 76+5(25/81)
15,15, 5	- FF5*	4085 76+5(16/81)
15,15, 3	- FF3*	4083 76+5(9/81)
15,15, 1	- FF1*	4081 76+5(4/81)
15,15, 0	3 FFO*	4080 76+5(0/81)

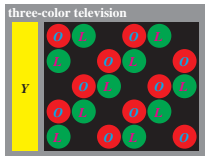
ME210-1, BS_25,1

colorness	color number	luminous value
$O^* L^* V^* n h^* d$		$Y (Y_M = 17 \text{ print})$
15,15,15	7 FFF*	4095 17+64(81/81)
15,13,15	- FDF*	4063 17+64(64/81)
15,11,15	- FBF*	4031 17+64(49/81)
15, 9,15	- F9F*	3999 17+64(36/81)
15, 7,15	- F7F*	3967 17+64(25/81)
15, 5,15	- F5F*	3935 17+64(16/81)
15, 3,15	- F3F*	3903 17+64(9/81)
15, 1,15	- F1F*	3871 17+64(4/81)
15, 0,15	5 F0F*	3855 17+64(0/81)

ME210-2, BS_25,2



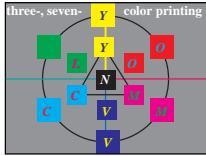
ME211-1, BS_27,1



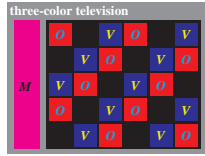
ME211-2, BS_27,2

colorness	color number	luminous value
$O^* L^* V^* n h^* d$		$Y (Y_C = 21 \text{ print})$
15,15,15	7 FFF*	4095 21+60(81/81)
13,15,15	- DFF*	3583 21+60(64/81)
11,15,15	- BFF*	3071 21+60(49/81)
9,15,15	- 9FF*	2559 21+60(36/81)
7,15,15	- 7FF*	2047 21+60(25/81)
5,15,15	- 5FF*	1535 21+60(16/81)
3,15,15	- 3FF*	1023 21+60(9/81)
1,15,15	- 1FF*	511 21+60(4/81)
0,15,15	6 0FF*	255 21+60(0/81)

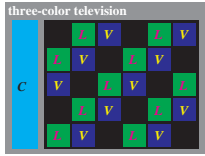
ME210-3, BS_25,3



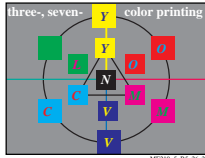
ME210-4, BS_26,1



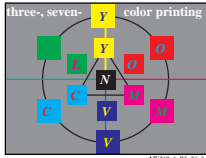
ME211-3, BS_27,3



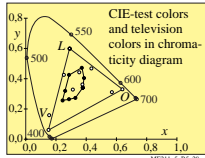
ME211-4, BS_27,4



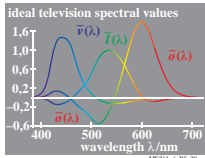
ME210-5, BS_26,2



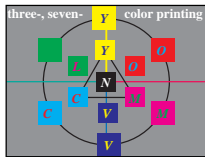
ME210-6, BS_26,3



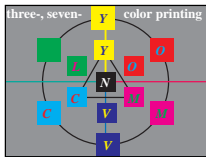
ME211-5, BS_28



ME211-6, BS_29



ME210-7, BS_26,4



ME210-8, BS_26,5

colorness	color number	digital rel. value
$O^* L^* V^* n h^* d$		$D (Y_D = 100 \text{ video})$
15,15,15	7 FFF*	100(81/81)2,55
13,13,13	- DDD*	3549 100(64/81)2,55
11,11,11	- BBB*	3003 100(49/81)2,55
9, 9, 9	- 999*	2457 100(36/81)2,55
7, 7, 7	- 777*	1911 100(25/81)2,55
5, 5, 5	- 555*	1365 100(16/81)2,55
3, 3, 3	- 333*	819 100(9/81)2,55
1, 1, 1	- 111*	273 100(4/81)2,55
0, 0, 0	0 000*	0 100(2/81)2,55

ME211-7, BS_30,1

colorness	color number	digital rel. value
$O^* L^* V^* n h^* d$		$D (Y_D = 71 \text{ video})$
0,15, 0	2 0F0*	240 71(81/81)2,55
0,13, 0	- 0D0*	208 71(64/81)2,55
0,11, 0	- 0B0*	176 71(49/81)2,55
0, 9, 0	- 090*	144 71(36/81)2,55
0, 7, 0	10 070*	112 71(25/81)2,55
0, 5, 0	- 050*	80 71(16/81)2,55
0, 3, 0	- 030*	48 71(9/81)2,55
0, 1, 0	- 010*	16 71(4/81)2,55
0, 0, 0	0 000*	0 81(2/81)2,55

ME211-8, BS_30,2

TUB-test chart ME21; Richter: Computer graphics, colorimetry
Colour book series: Colour order and reproduction no. 3

input: *cmyp setcmypkolor*
output: no colour data change

See original or copy: http://web.me.com/klaus.richter/ME21/ME21LON1.TXT /PS
Technical information: http://www.ps.bam.de or http://130.149.60.45/~farbmetrik

TUB registration: 20101101-ME21/ME21LON1.TXT /PS
application for measurement of printer or monitor systems

TUB material: code=thada