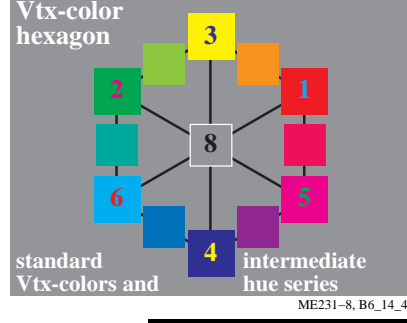
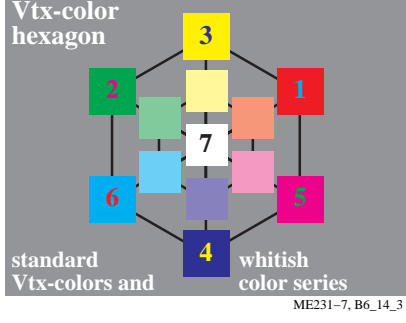
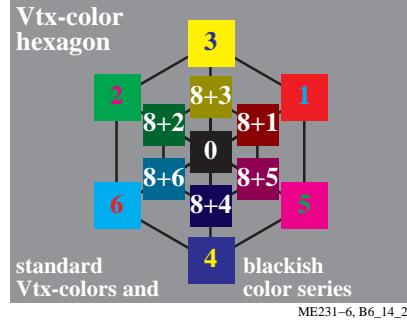
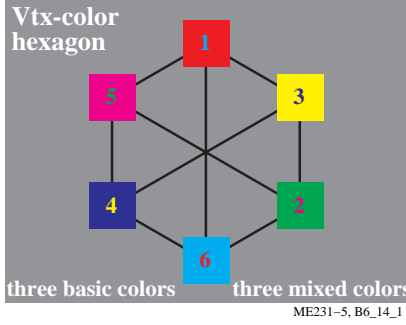
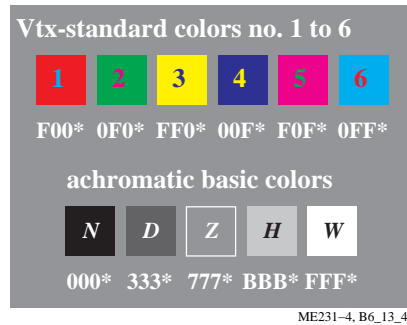
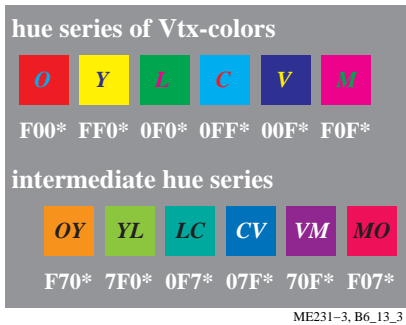
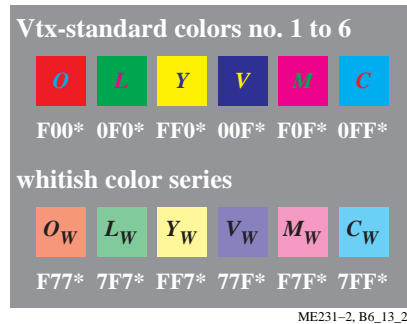
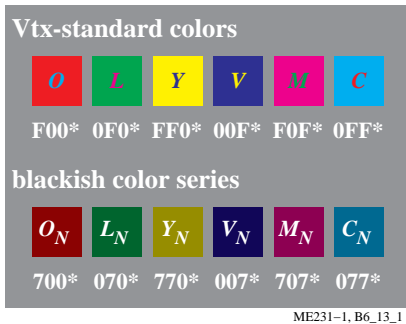
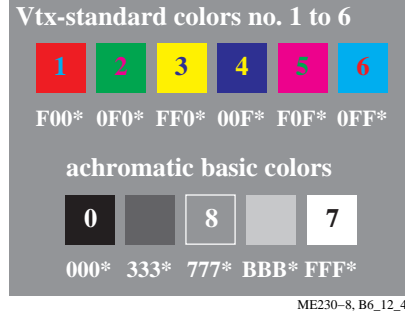
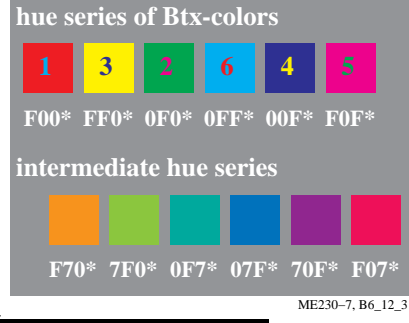
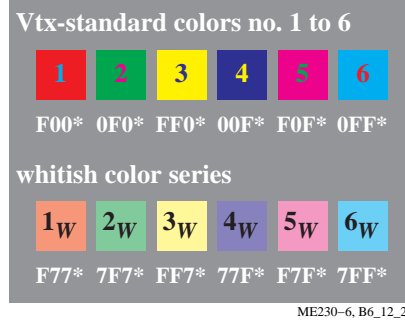
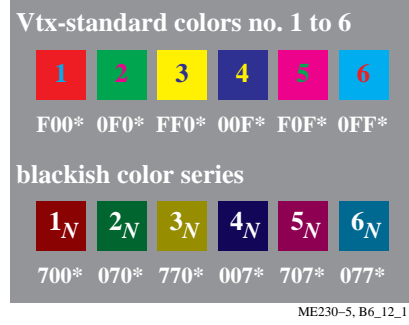


colorness	color number	digital rel. value	
$O^* L^* V^* n$	$h^* d$	$D (Y_Y = 93 \text{ video})$	
15,15,15	7 FFF*	4095	$[93+7 \cdot (81/81)] \cdot 2,55$
15,15,13	- FFD*	4093	$[93+7 \cdot (64/81)] \cdot 2,55$
15,15,11	- FFB*	4091	$[93+7 \cdot (49/81)] \cdot 2,55$
15,15,9	- FF9*	4089	$[93+7 \cdot (36/81)] \cdot 2,55$
15,15,7	- FF7*	4087	$[93+7 \cdot (25/81)] \cdot 2,55$
15,15,5	- FF5*	4085	$[93+7 \cdot (16/81)] \cdot 2,55$
15,15,3	- FF3*	4083	$[93+7 \cdot (9/81)] \cdot 2,55$
15,15,1	- FF1*	4081	$[93+7 \cdot (4/81)] \cdot 2,55$
15,15,0	3 FF0*	4080	$[93+7 \cdot (0/81)] \cdot 2,55$

ME230-3, B6_11_1

colorness	color number	digital rel. value	
$O^* L^* V^* n$	$h^* d$	$D (Y_M = 29 \text{ video})$	
15,15,15	7 FFF*	4095	$[29+71 \cdot (81/81)] \cdot 2,55$
15,13,15	- FDF*	4063	$[29+71 \cdot (64/81)] \cdot 2,55$
15,11,15	- FBF*	4031	$[29+71 \cdot (49/81)] \cdot 2,55$
15,9,15	- F9F*	3999	$[29+71 \cdot (36/81)] \cdot 2,55$
15,7,15	- F7F*	3967	$[29+71 \cdot (25/81)] \cdot 2,55$
15,5,15	- F5F*	3935	$[29+71 \cdot (16/81)] \cdot 2,55$
15,3,15	- F3F*	3903	$[29+71 \cdot (9/81)] \cdot 2,55$
15,1,15	- F1F*	3871	$[29+71 \cdot (4/81)] \cdot 2,55$
15,0,15	5 F0F*	3855	$[29+71 \cdot (0/81)] \cdot 2,55$

ME230-4, B6_11_2



See original or copy: <http://web.me.com/klaus.richter/ME23/ME23LONP.PDF> /.PS
 Technical information: <http://www.ps.bam.de> or <http://130.149.60.45/~farbmetrik>