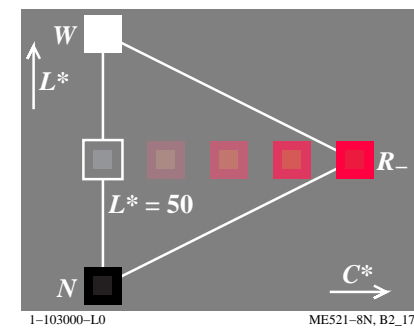
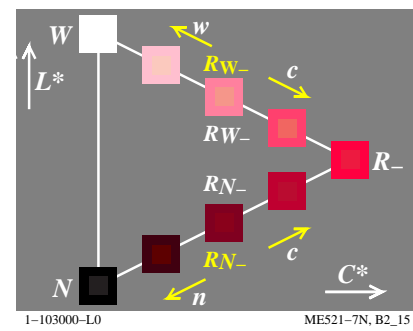
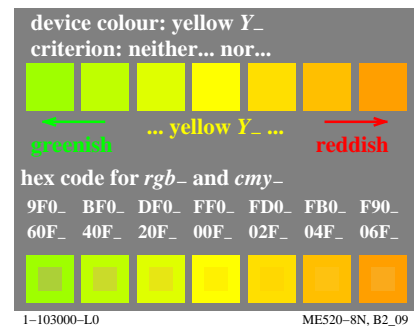
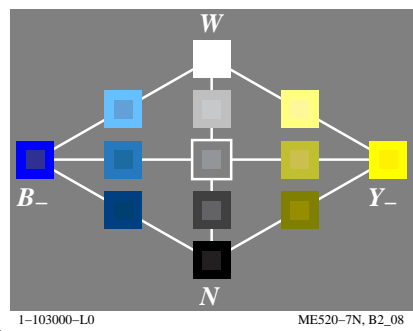
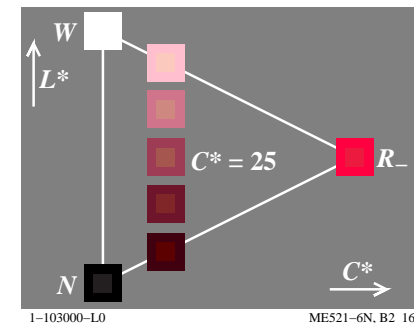
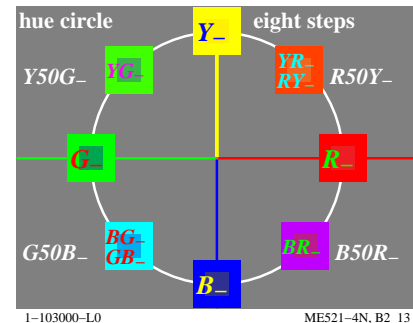
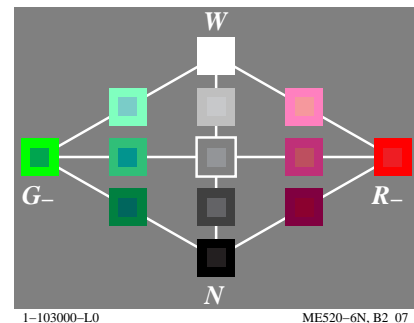
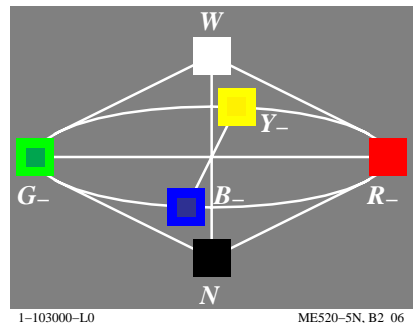
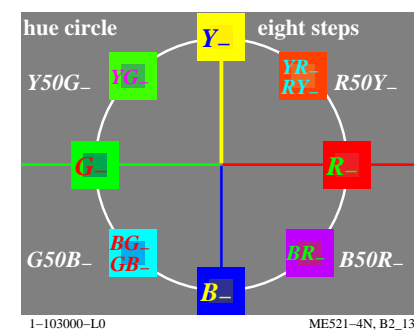
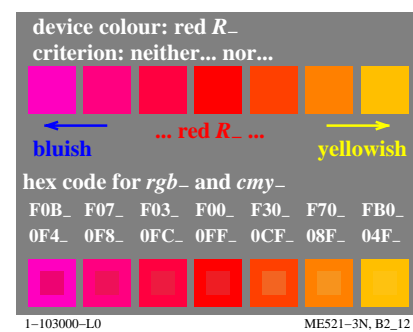
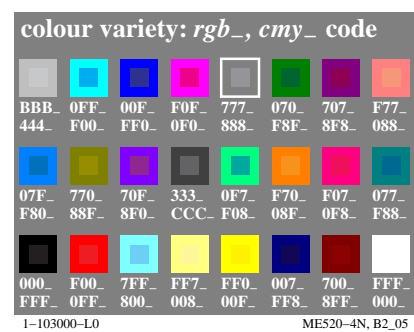
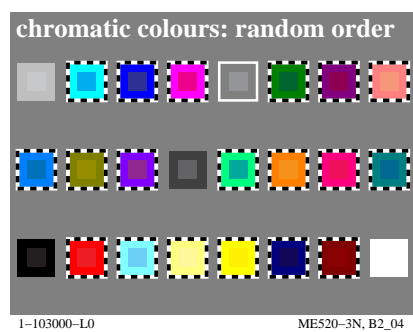
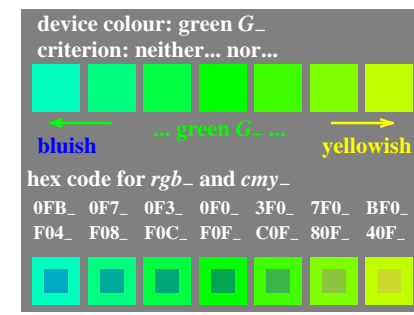
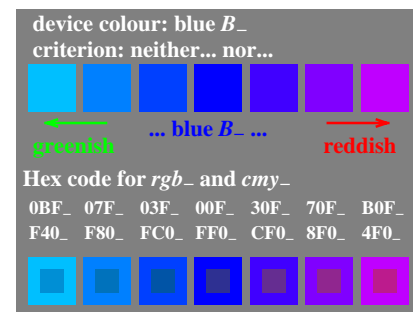
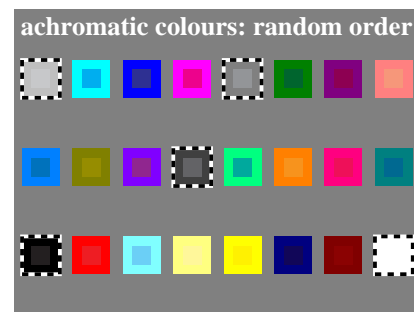
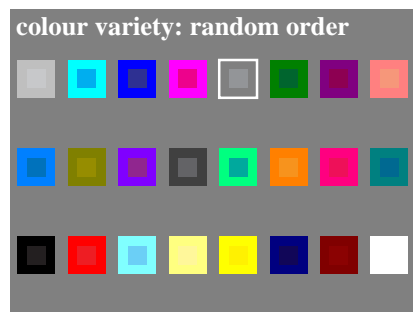
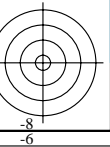


see similar files: <http://farbe.li.tu-berlin.de/ME52/ME52.HTM>
<http://130.149.60.45/~farbmetrik> or <http://farbe.li.tu-berlin.de>

TUB registration: 20190801-ME52/ME52L0FP.PDF /.PS
application for measurement of display output

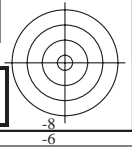
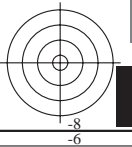
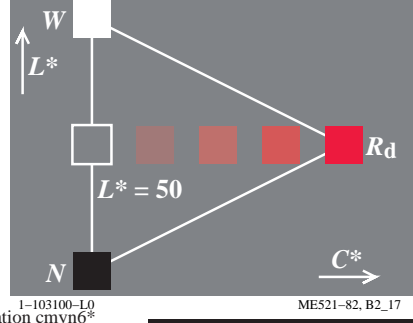
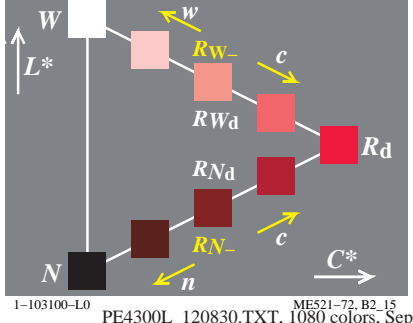
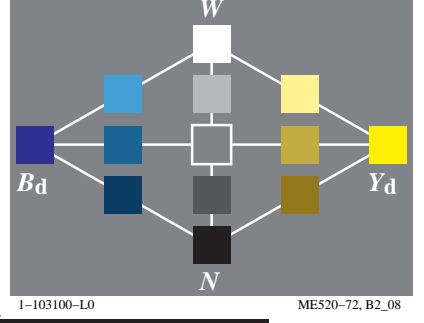
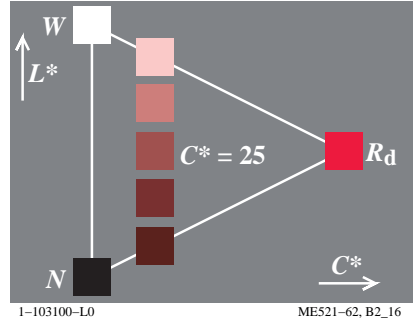
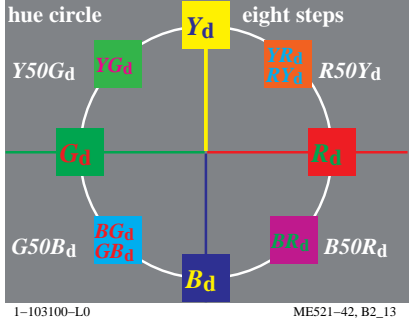
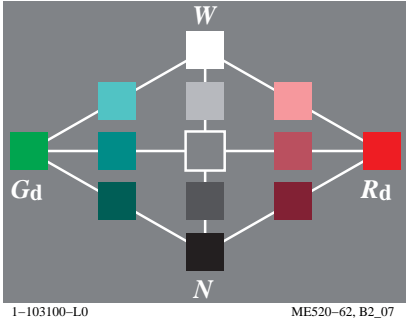
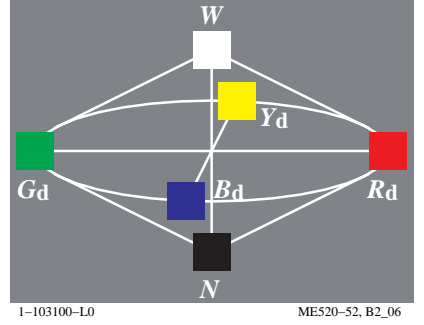
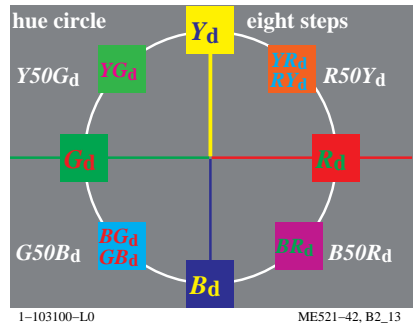
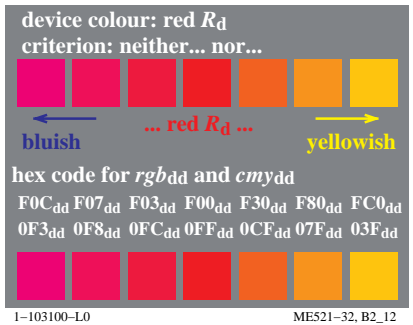
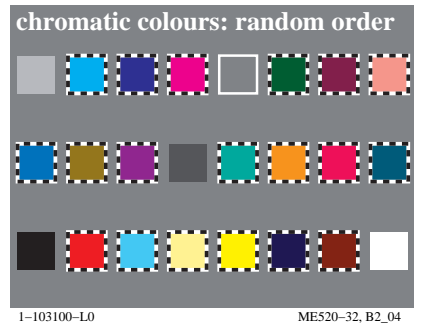
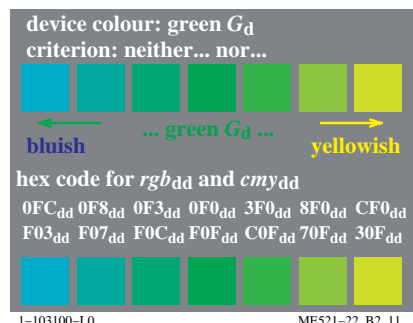
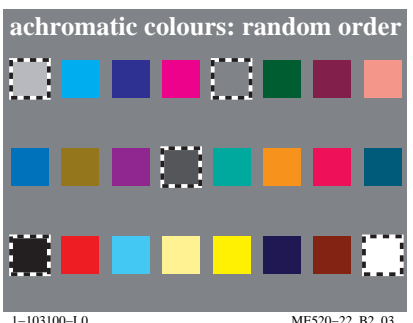
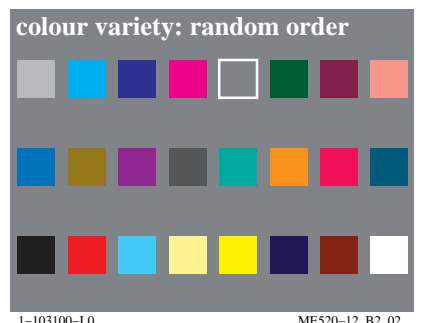
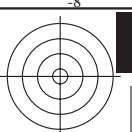
TUB material: code=rh4ta



see similar files: <http://farbe.li.tu-berlin.de/ME52/ME52.HTM>
<http://130.149.60.45/~farbmeterik> or <http://farbe.li.tu-berlin.de>

TUB registration: 20190801-ME52/ME52L0FP.PDF /.PS
application for measurement of display output, no separation

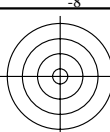
TUB material: code=rh4ta



see similar files: <http://farbe.li.tu-berlin.de/ME52/ME52.HTM>
<http://130.149.60.45/~farbmetrik> or <http://farbe.li.tu-berlin.de>

TUB registration: 20190801-ME52/ME52LOFP.PDF /.PS
application for measurement of display output

TUB material: code=rh4ta



colour variety: random order

1-113000-L0 ME520-1N, B2_02

achromatic colours: random order

1-113000-L0 ME520-2N, B2_03

elementary colour: blue B_

criterion: neither... nor...

hex code for *rgb_* and *cmy_*

0BF_ 07F_ 03F_ 00F_ 30F_ 70F_ B0F_ F40_ F80_ FC0_ FF0_ CF0_ 8F0_ 4F0_

1-113000-L0 ME521-1N, B2_10

elementary colour: green G_

criterion: neither... nor...

hex code for *rgb_* and *cmy_*

0FB_ 0F7_ 0F3_ 0F0_ 3F0_ 7F0_ BF0_ F04_ F08_ F0C_ F0F_ C0F_ 80F_ 40F_

1-113000-L0 ME521-2N, B2_11

chromatic colours: random order

1-113000-L0 ME520-3N, B2_04

colour variety: *rgb_*, *cmy_* code

hex code for *rgb_* and *cmy_*

000_ F00_ 70F_ FF7_ FF0_ 007_ 700_ FFF_ FFF_ 0FF_ 800_ 008_ 00F_ FF8_ 8FF_ 000_

1-113000-L0 ME520-4N, B2_05

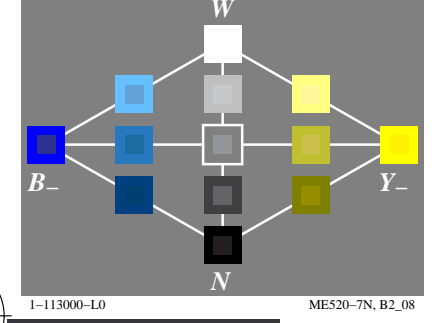
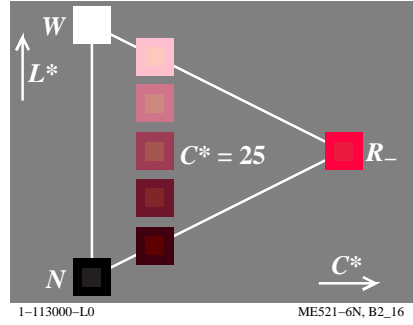
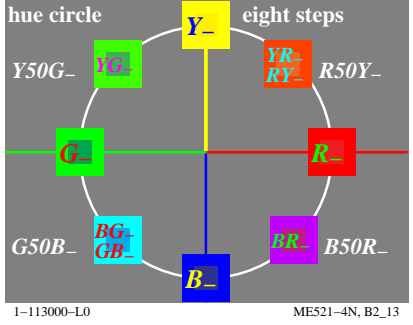
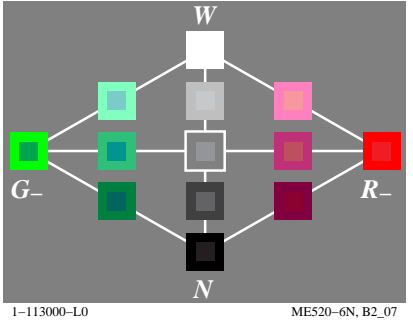
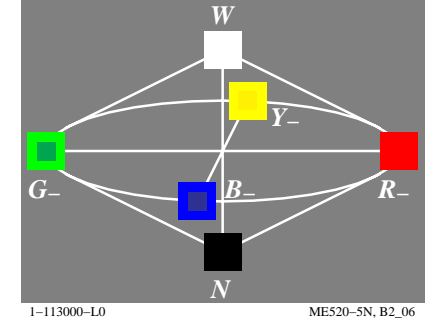
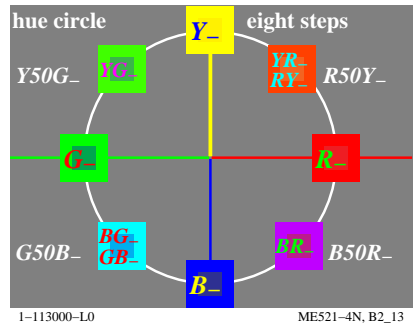
elementary colour: red R_

criterion: neither... nor...

hex code for *rgb_* and *cmy_*

F0B_ F07_ F03_ F00_ F30_ F70_ FB0_ 0F4_ 0F8_ 0FC_ 0FF_ 0C0_ 08F_ 04F_

1-113000-L0 ME521-3N, B2_12



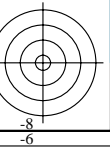
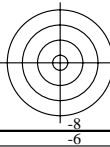
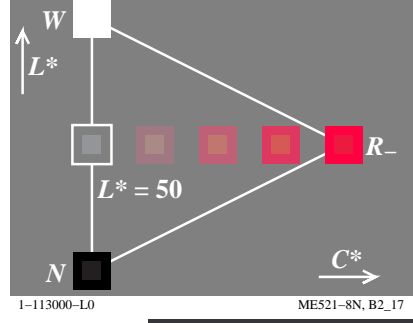
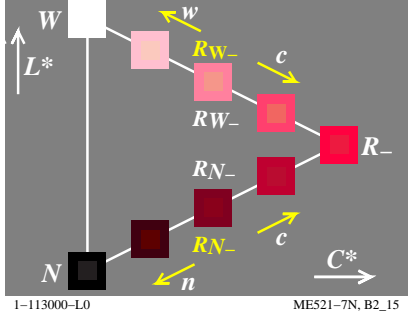
elementary colour: yellow Y_

criterion: neither... nor...

hex code for *rgb_* and *cmy_*

9F0_ BF0_ DF0_ FF0_ FD0_ FB0_ F90_ 60F_ 40F_ 20F_ 00F_ 02F_ 04F_ 06F_

1-113000-L0 ME520-8N, B2_09



see similar files: <http://farbe.li.tu-berlin.de/ME52/ME52.HTM>
<http://130.149.60.45/~farbmertik> or <http://farbe.li.tu-berlin.de>

TUB registration: 20190801-ME52/ME52L0FP.PDF /.PS
application for measurement of display output, no separation

TUB material: code=rh4ta

