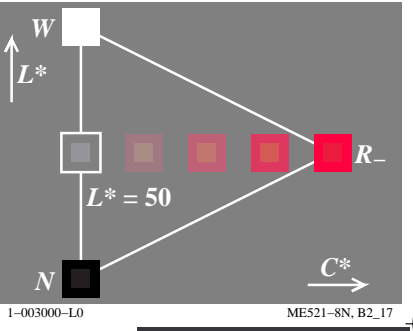
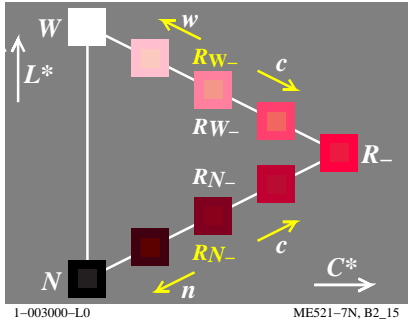
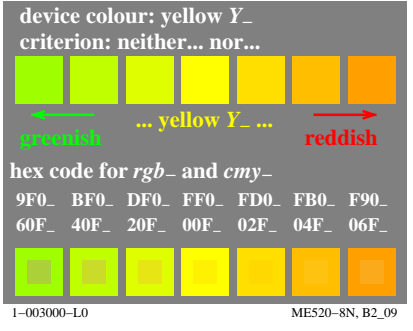
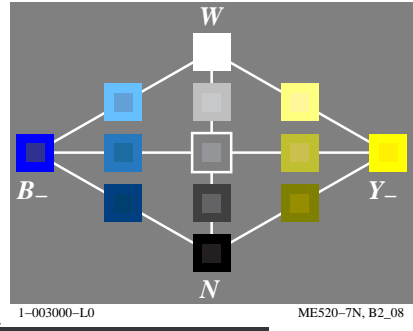
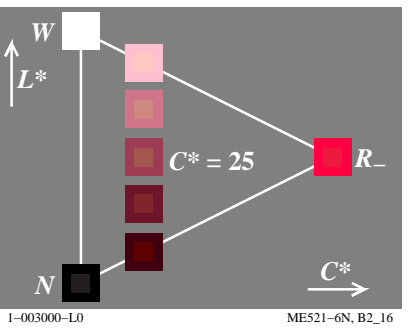
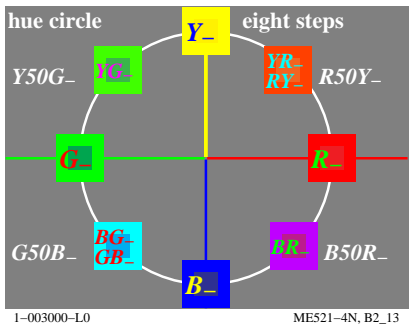
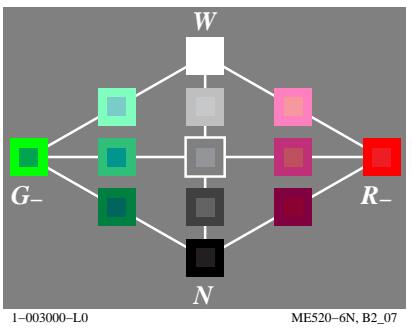
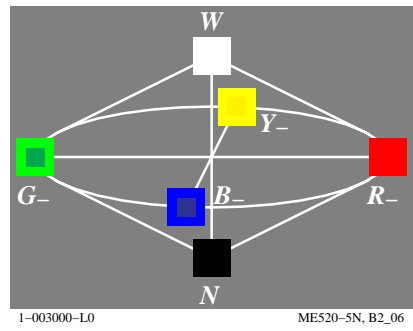
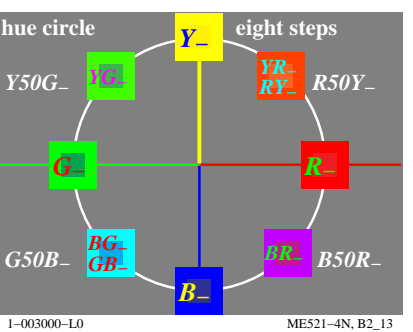
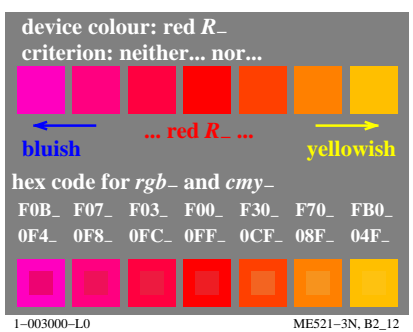
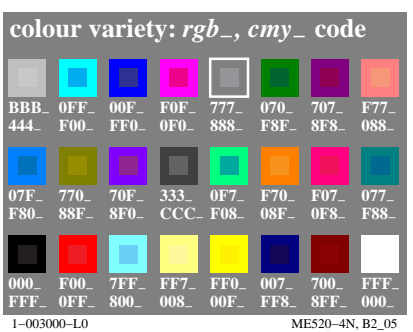
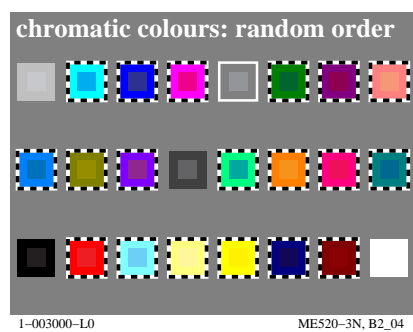
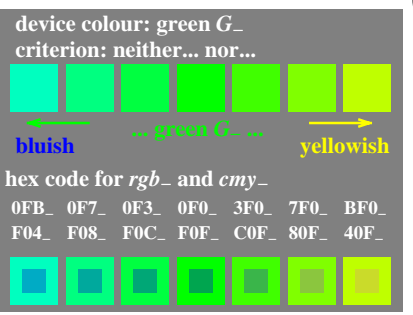
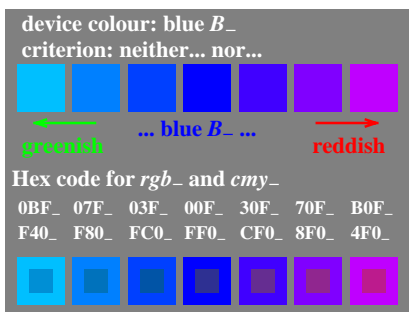
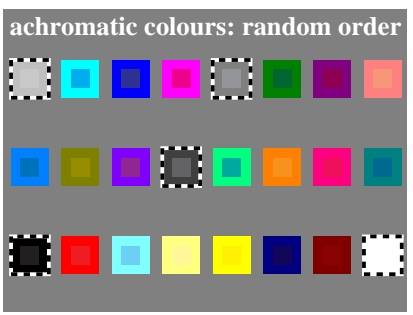
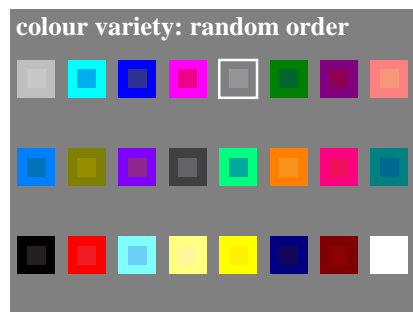
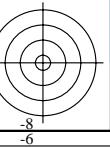
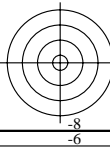
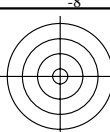


http://farbe.li.tu-berlin.de/ME52/ME52LONP.PDF /.PS; start output
N: no 3D-linearization (OL) in file (F) or PS-startup (S), page 1/2

see similar files: <http://farbe.li.tu-berlin.de/ME52/ME52.HTM>
<http://130.149.60.45/~farbmetrik> or <http://farbe.li.tu-berlin.de>

TUB registration: 20190801-ME52/ME52LONP.PDF /.PS
application for measurement of display output

TUB material: code=rh4ta



TUB-test chart ME52; Computer graphics and colorimetry
Image series ME52, 3D=0, de=0

input: rgb/cmyk -> rgb/cmyk
output: no change

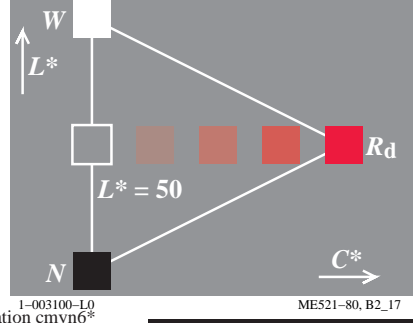
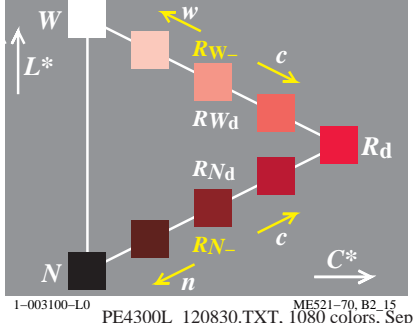
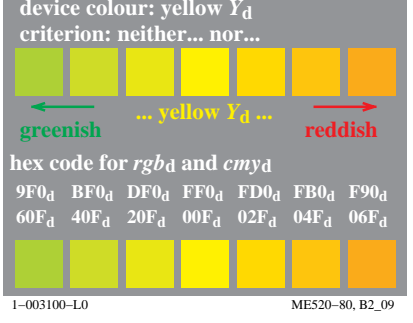
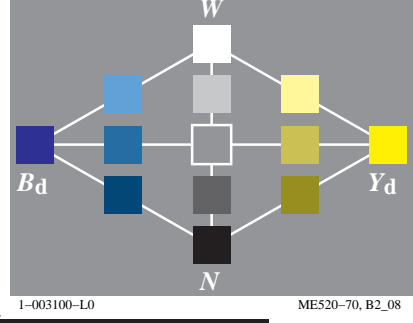
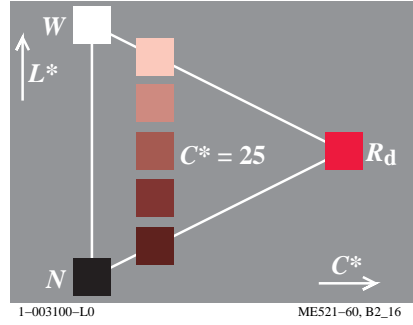
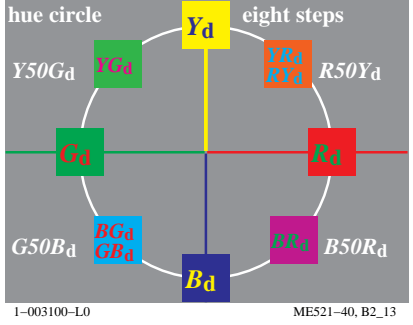
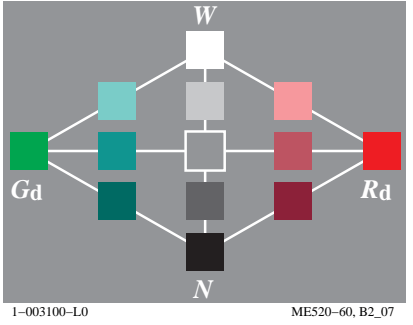
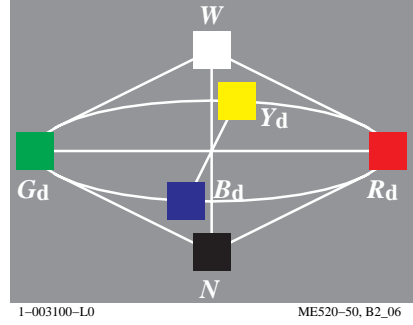
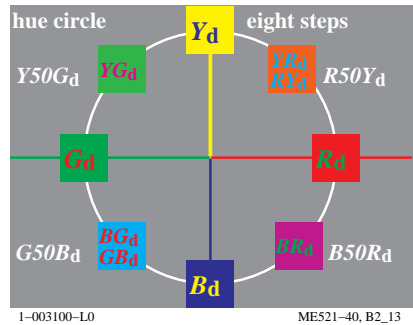
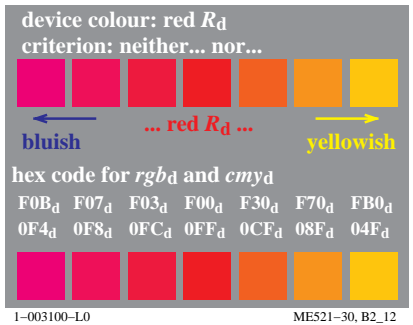
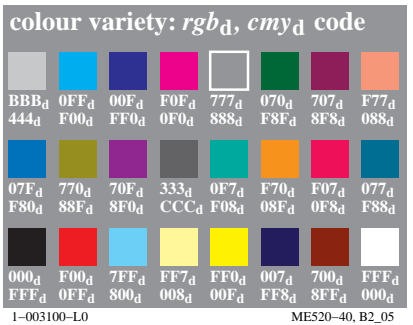
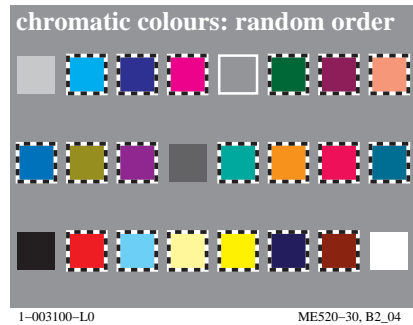
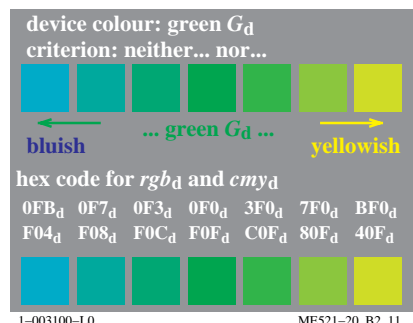
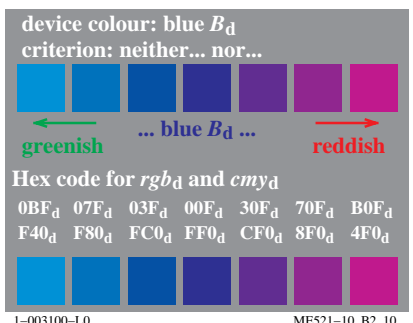
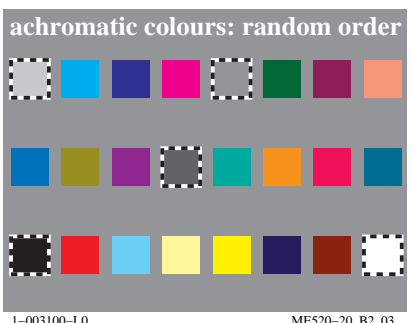
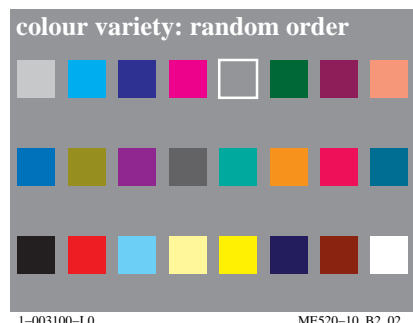


http://farbe.li.tu-berlin.de/ME52/ME52LONP.PDF /.PS; transfer output
N: no 3D-linearization (OL) in file (F) or PS-startup (S), page 2/2

see similar files: <http://farbe.li.tu-berlin.de/ME52/ME52.HTM>
<http://130.149.60.45/~farbmatrik> or <http://farbe.li.tu-berlin.de>

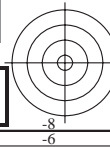
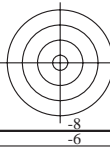
TUB registration: 20190801-ME52/ME52LONP.PDF /.PS
application for measurement of display output, no separation

TUB material: code=rh4ta



TUB-test chart ME52; Computer graphics and colorimetry
Image series ME52, 3D=0, de=0, L^*-cmy_n6

PE4300L_120830.TXT, 1080 colors, Separation cmy_n6^*
input: $rgb/cmyk \rightarrow rgb_d$
output: transfer to rgb_d

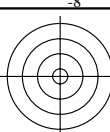


http://farbe.li.tu-berlin.de/ME52/ME52LONP.PDF /.PS; start output
N: no 3D-linearization (OL) in file (F) or PS-startup (S), page 1/2

see similar files: <http://farbe.li.tu-berlin.de/ME52/ME52.HTM>
<http://130.149.60.45/~farbmetrik> or <http://farbe.li.tu-berlin.de>

TUB registration: 20190801-ME52/ME52LONP.PDF /.PS
application for measurement of display output

TUB material: code=rh4ta



colour variety: random order

1-013000-L0 ME520-1N, B2_02

achromatic colours: random order

1-013000-L0 ME520-2N, B2_03

elementary colour: blue B_
criterion: neither... nor...

Hex code for *rgb_* and *cmy_*
0BF_ 07F_ 03F_ 00F_ 30F_ 70F_ B0F_
F40_ F80_ FC0_ FF0_ CF0_ 8F0_ 4F0_

1-013000-L0 ME521-1N, B2_10

elementary colour: green G_
criterion: neither... nor...

hex code for *rgb_* and *cmy_*
0FB_ 0F7_ 0F3_ 0F0_ 3F0_ 7F0_ BF0_
F04_ F08_ F0C_ F0F_ C0F_ 80F_ 40F_

1-013000-L0 ME521-2N, B2_11

chromatic colours: random order

1-013000-L0 ME520-3N, B2_04

colour variety: *rgb_*, *cmy_* code

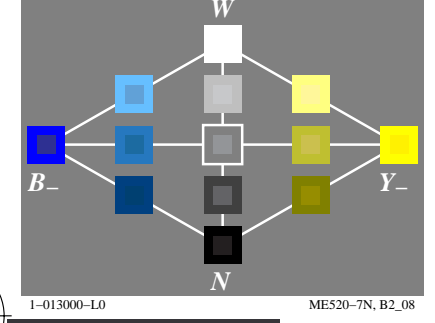
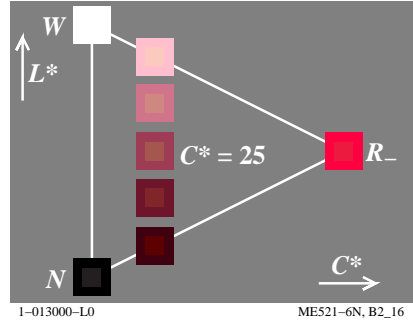
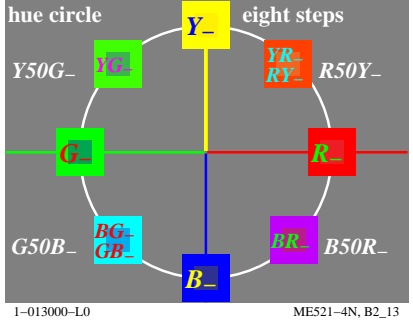
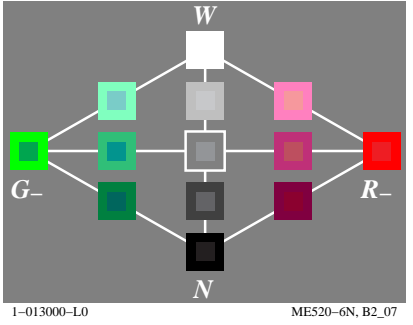
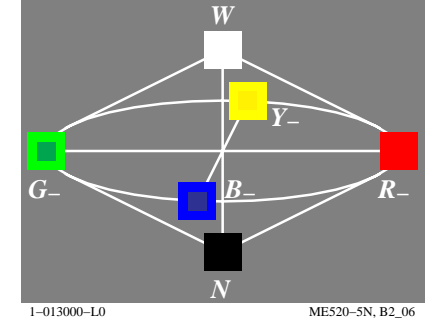
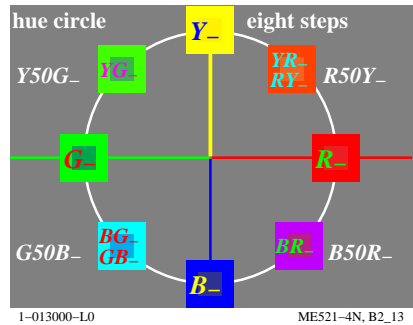
hex code for *rgb_* and *cmy_*
000_ F00_ 70F_ FF7_ FF0_ 007_ 700_ FFF_
FFF_ 0FF_ 800_ 008_ 00F_ FF8_ 8FF_ 000_

1-013000-L0 ME520-4N, B2_05

elementary colour: red R_
criterion: neither... nor...

hex code for *rgb_* and *cmy_*
F0B_ F07_ F03_ F00_ F30_ F70_ FB0_
0F4_ 0F8_ 0FC_ 0FF_ 0C0_ 08F_ 04F_

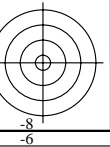
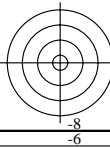
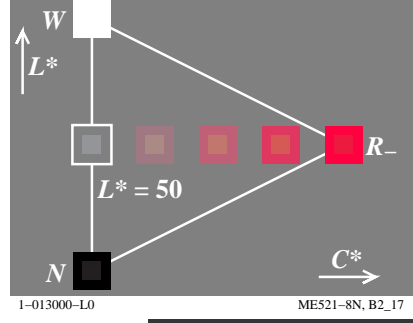
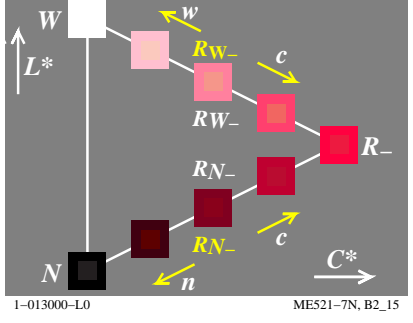
1-013000-L0 ME521-3N, B2_12



elementary colour: yellow Y_
criterion: neither... nor...

hex code for *rgb_* and *cmy_*
9F0_ BF0_ DF0_ FF0_ FD0_ FB0_ F90_
60F_ 40F_ 20F_ 00F_ 02F_ 04F_ 06F_

1-013000-L0 ME520-8N, B2_09



TUB-test chart ME52; Computer graphics and colorimetry
Image series ME52, 3D=0, de=1

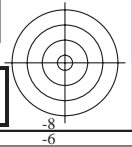
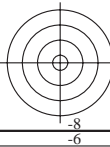
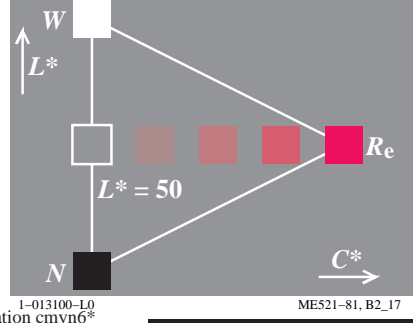
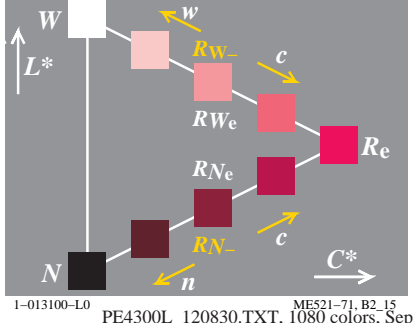
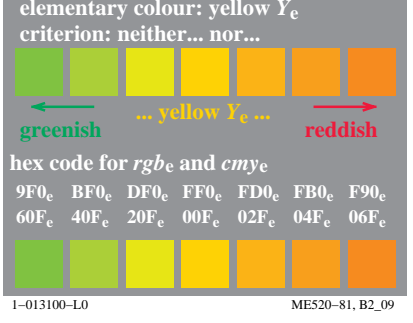
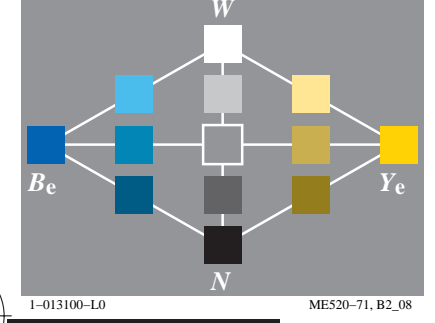
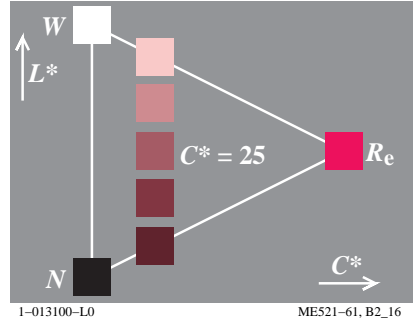
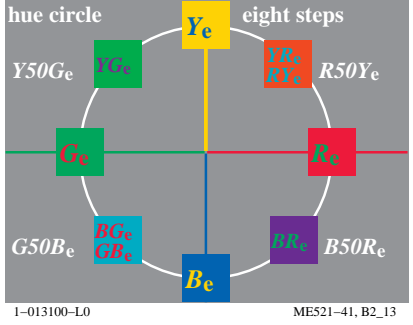
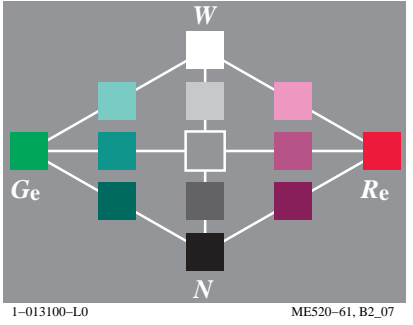
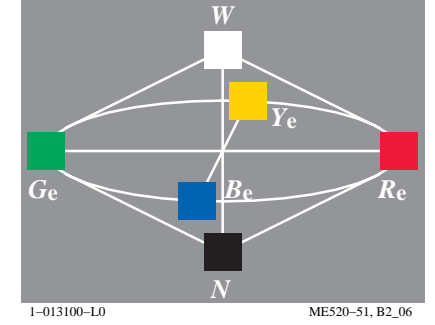
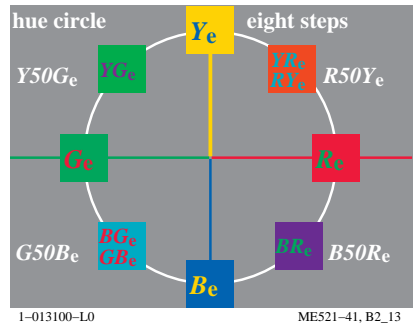
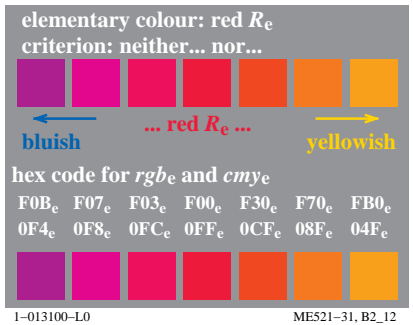
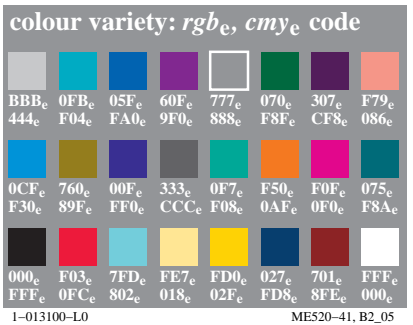
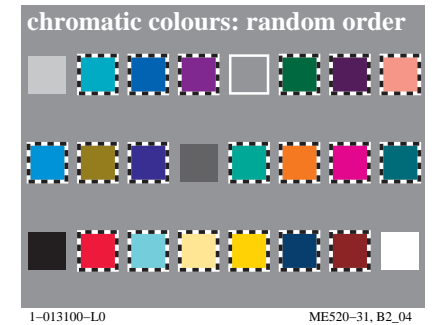
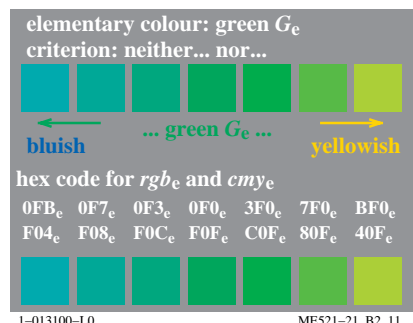
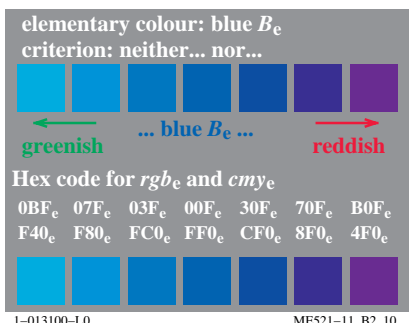
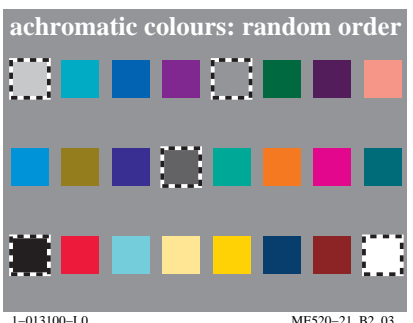
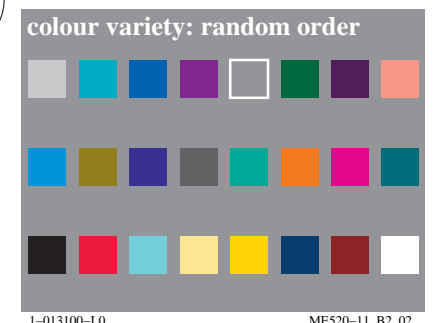
input: *rgb/cmyk* -> *rgb/cmyk*
output: no change

http://farbe.li.tu-berlin.de/ME52/ME52LONP.PDF /.PS; transfer output
N: no 3D-linearization (OL) in file (F) or PS-startup (S), page 2/2

see similar files: <http://farbe.li.tu-berlin.de/ME52/ME52.HTM>
<http://130.149.60.45/~farbmatrik> or <http://farbe.li.tu-berlin.de>

TUB registration: 20190801-ME52/ME52LONP.PDF /.PS
application for measurement of display output, no separation

TUB material: code=rh4ta



TUB-test chart ME52; Computer graphics and colorimetry
Image series ME52, 3D=0, de=1, L-cmy_n6

PE4300L_120830.TXT, 1080 colors, Separation cmy_n6*
input: $rgb/cmyk \rightarrow rgb_e$
output: transfer to rgb_e