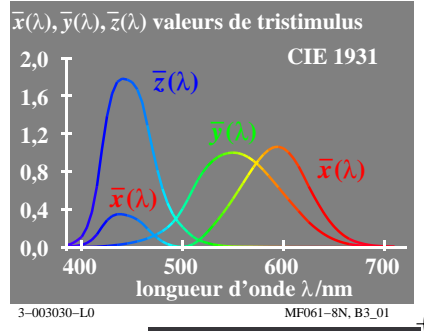
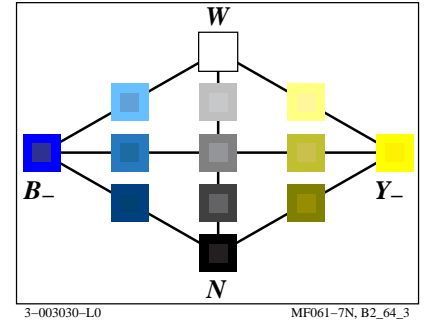
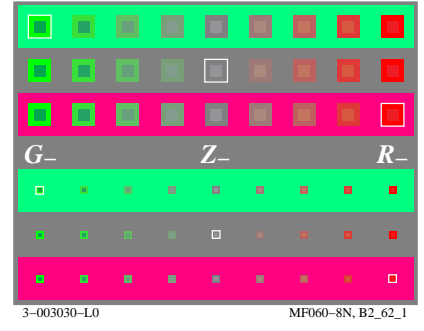
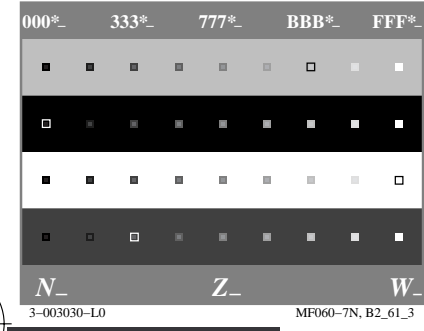
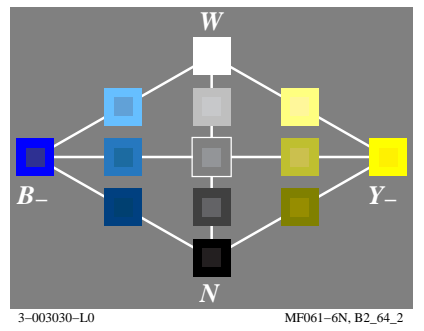
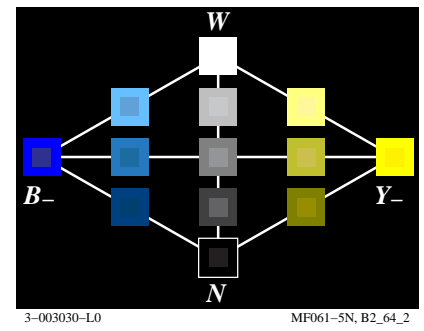
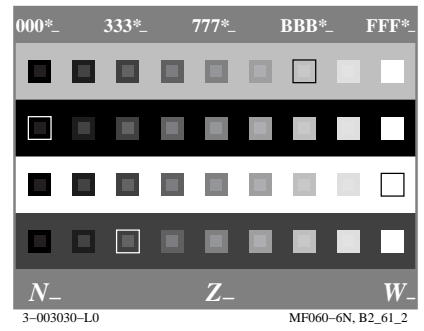
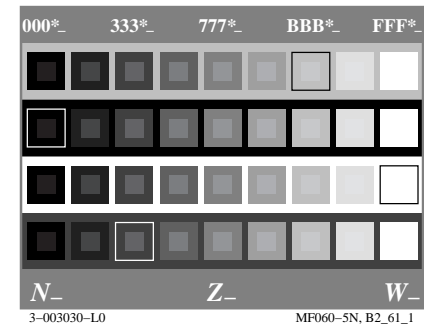
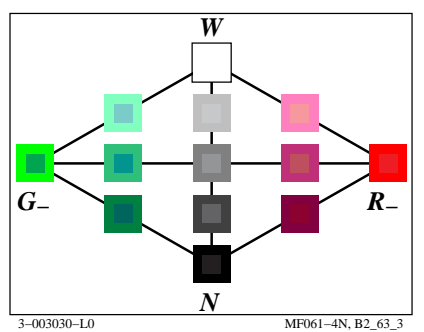
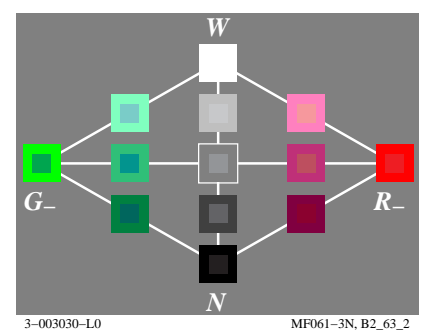
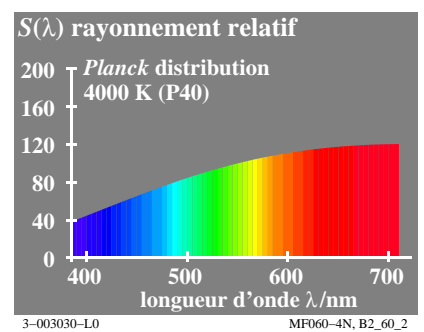
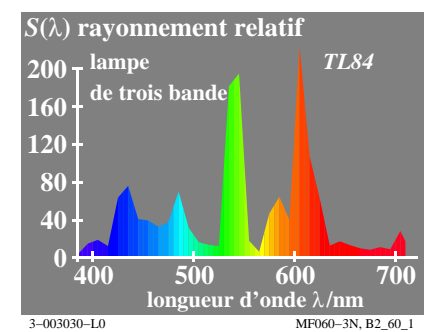
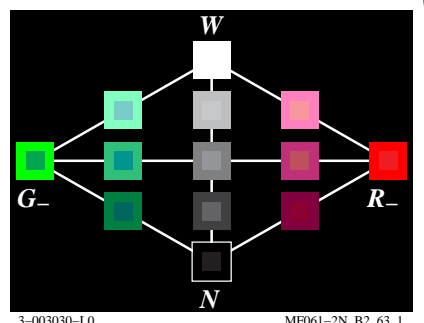
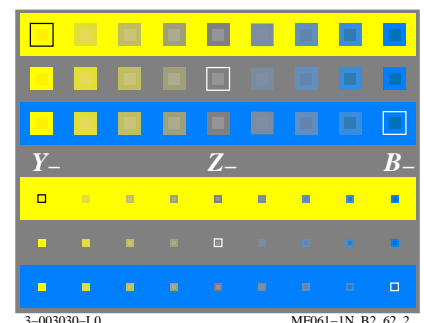
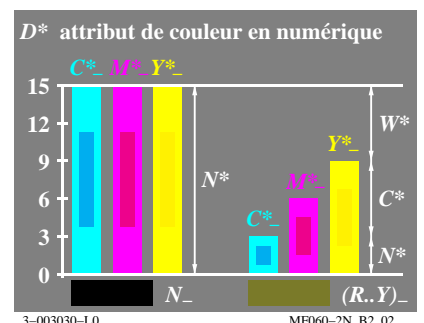
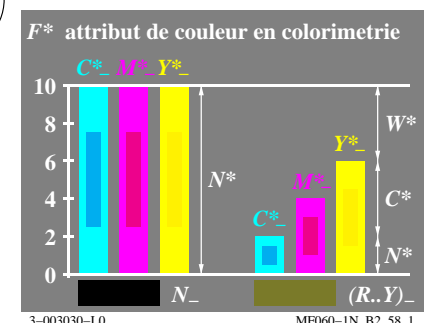


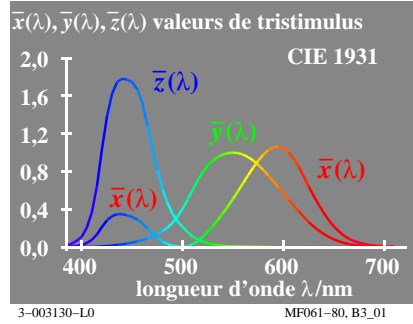
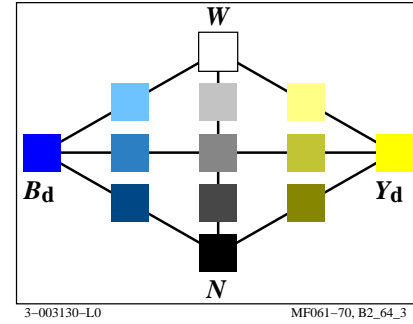
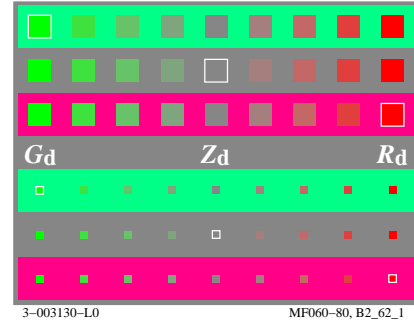
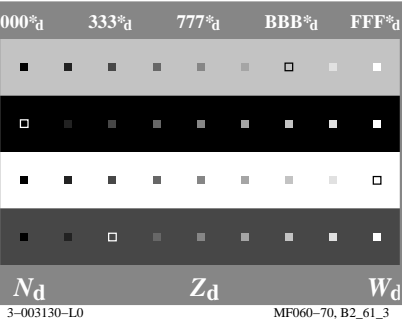
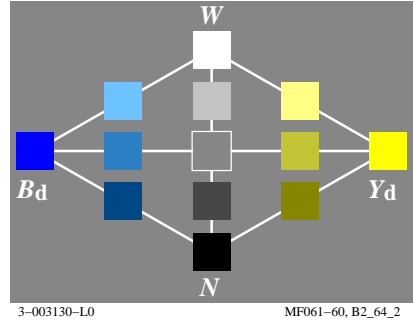
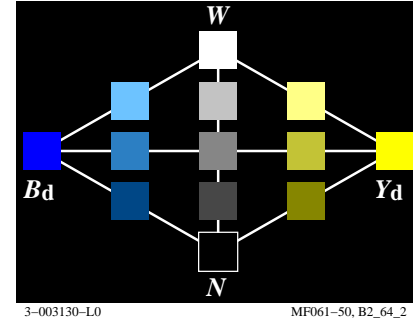
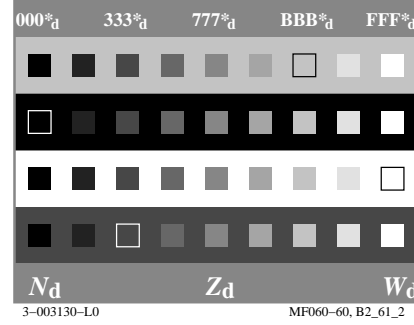
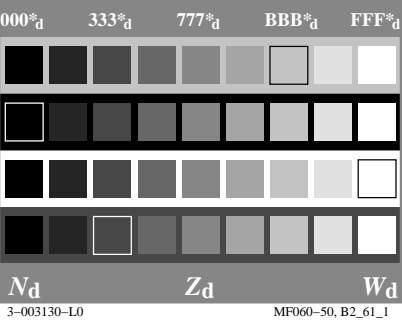
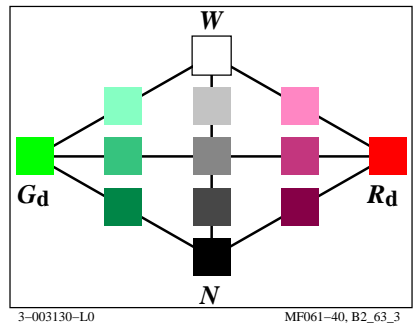
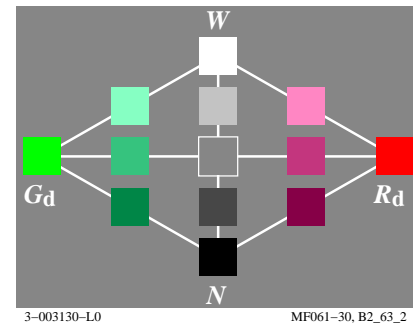
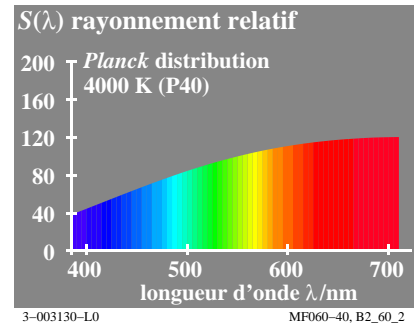
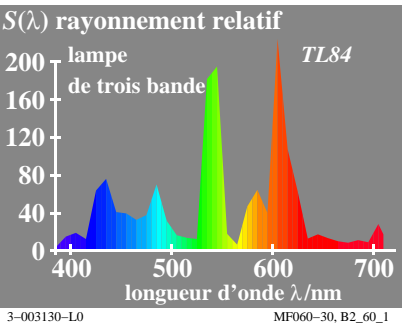
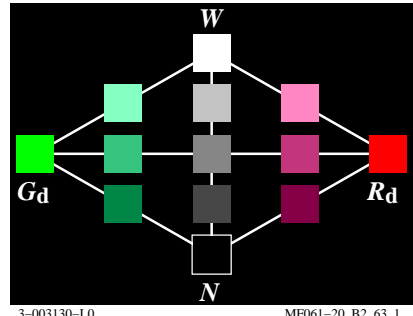
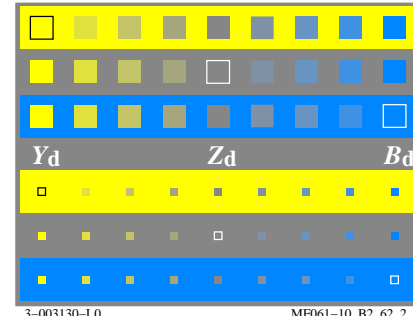
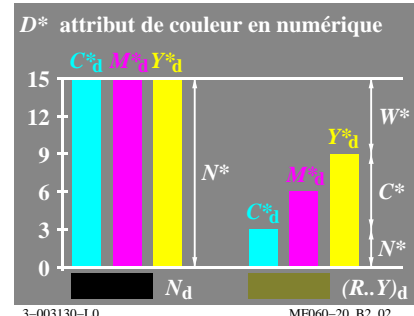
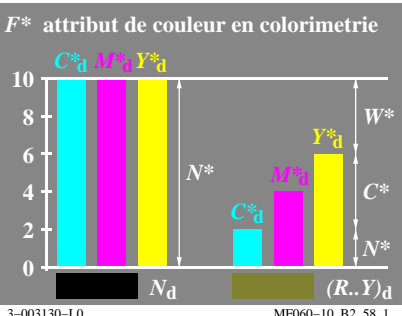
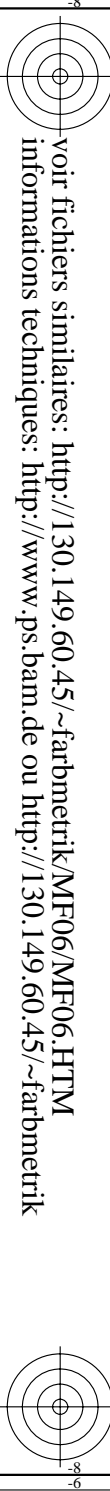
voir fichiers similaires: <http://130.149.60.45/~farbmetrik/MF06/MF06LONP.PDF> / .PS  
informations techniques: <http://www.ps.bam.de> ou <http://130.149.60.45/~farbmetrik>

TUB enregistrement: 20130201-MF06/MF06LONP.PDF /.PS TUB matériel: code=rh4ta  
application pour la mesure de sortie sur écran



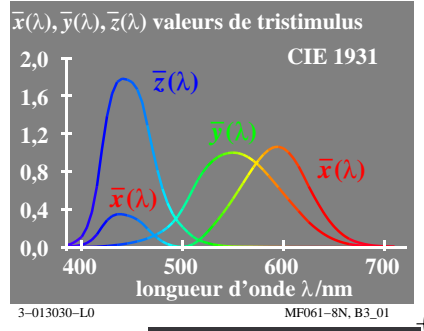
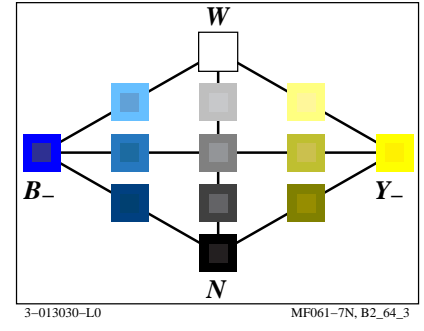
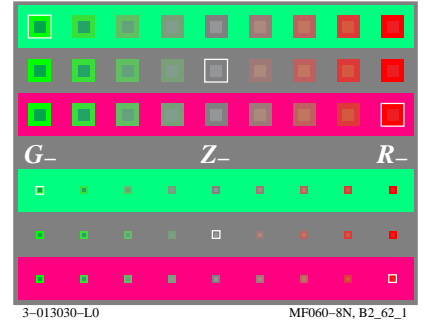
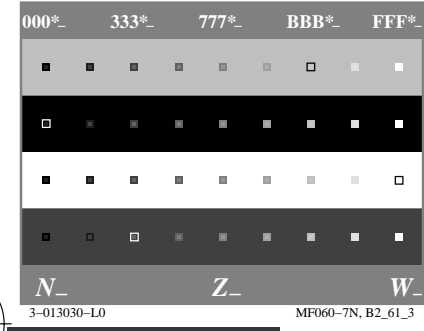
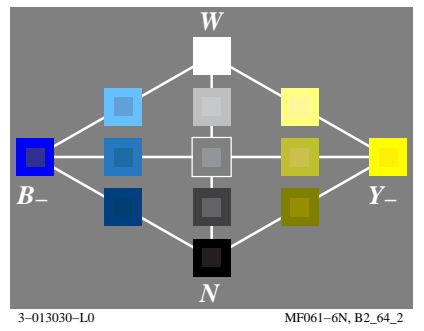
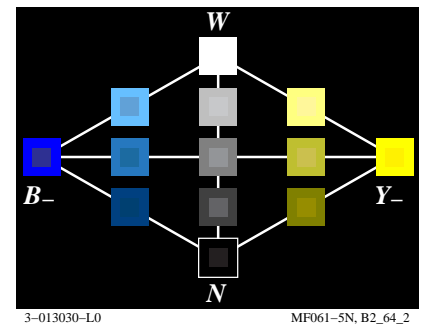
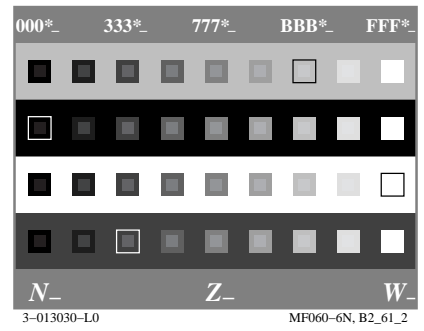
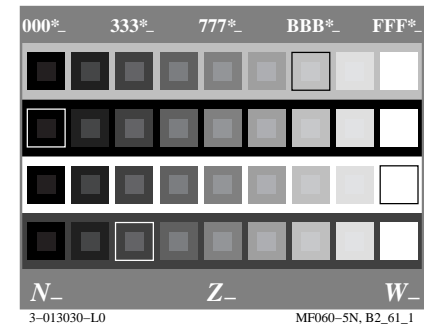
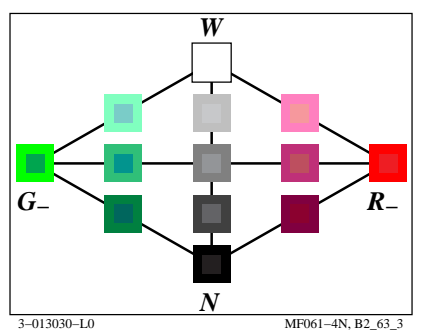
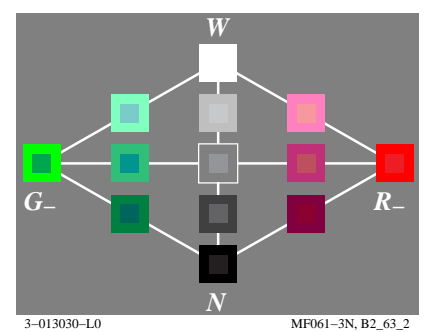
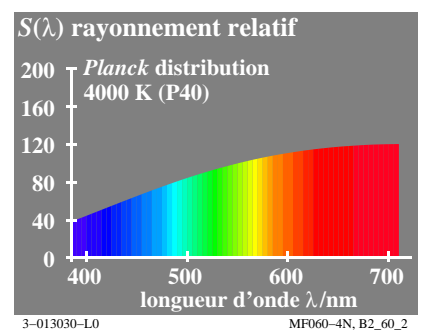
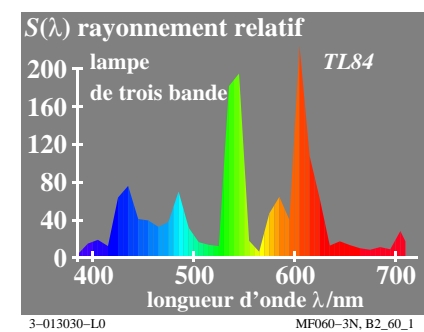
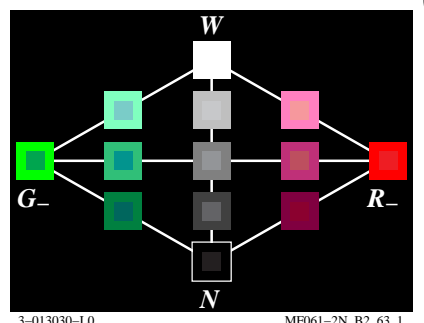
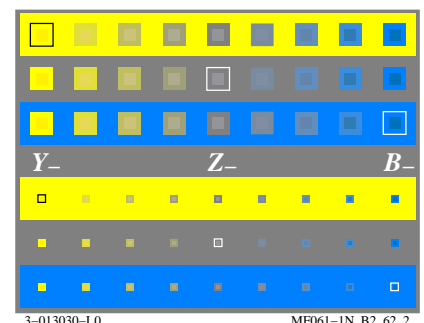
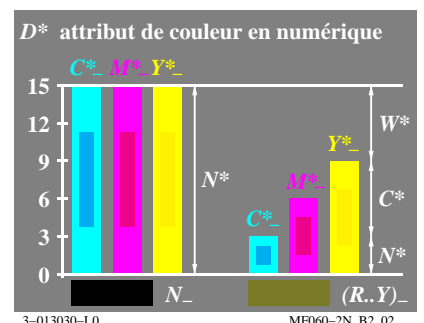
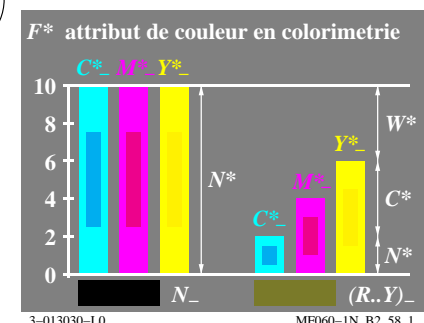
voir fichiers similaires: <http://130.149.60.45/~farbmetrik/MF06/MF06LONP.PDF> /PS  
informations techniques: <http://www.ps.bam.de> ou <http://130.149.60.45/~farbmetrik>

TUB enregistrement: 20130201-MF06/MF06LONP.PDF /PS  
application pour la mesure de sortie sur écran, aucune séparation  
TUB matériel: code=rh4ta



voir fichiers similaires: <http://130.149.60.45/~farbmetrik/MF06/MF06LONP.PDF> / .PS  
informations techniques: <http://www.ps.bam.de> ou <http://130.149.60.45/~farbmetrik>

TUB enregistrement: 20130201-MF06/MF06LONP.PDF /.PS TUB matériel: code=rh4ta  
application pour la mesure de sortie sur écran



voir fichiers similaires: <http://130.149.60.45/~farbmetrik/MF06/MF06LONP.PDF> / .PS  
informations techniques: <http://www.ps.bam.de> ou <http://130.149.60.45/~farbmetrik>

TUB enregistrement: 20130201-MF06/MF06LONP.PDF /.PS TUB matériel: code=rh4ta  
application pour la mesure de sortie sur écran, aucune séparation

