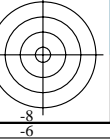
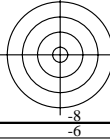
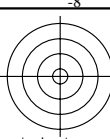


voir fichiers similaires: <http://farbe.li.tu-berlin.de/MF52/MF52.HTM>
<http://130.149.60.45/~farbmetrik> ou <http://farbe.li.tu-berlin.de>

TUB enregistrement: 20190801-MF52/MF52L0FP.PDF / .PS
application pour la mesure de sortie sur écran

TUB matériel: code=rh4ta



diversité de couleurs : ordre aléatoire

2-103000-L0 MF520-1N, B2_02

couleurs achromatiques: ordre aléatoire

2-103000-L0 MF520-2N, B2_03

couleur périphérique : bleu B_

critère: ni... ni...

hex-code pour rgb_ et cmy_

0BF_ 07F_ 03F_ 00F_ 30F_ 70F_ B0F_ F40_ F80_ FC0_ FF0_ CF0_ 8F0_ 4F0_

2-103000-L0 MF521-1N, B2_10

couleur périphérique : vert G_

critère: ni... ni...

hex-code pour rgb_ et cmy_

0FB_ 0F7_ 0F3_ 0F0_ 3F0_ 7F0_ BF0_ F04_ F08_ F0C_ F0F_ C0F_ 80F_ 40F_

2-103000-L0 MF521-2N, B2_11

couleurs chromatiques: ordre aléatoire

2-103000-L0 MF520-3N, B2_04

diversité de couleurs : rgb_, cmy_ code

hex-code pour rgb_ et cmy_

000_ F00_ 7FF_ FF7_ FF0_ 007_ 700_ FFF_ FFF_ 0FF_ 800_ 008_ 00F_ FF8_ 8FF_ 000_

2-103000-L0 MF520-4N, B2_05

couleur périphérique : rouge R_

critère: ni... ni...

hex-code pour rgb_ et cmy_

F0B_ F07_ F03_ F00_ F30_ F70_ FB0_ 0F4_ 0F8_ 0FC_ 0FF_ 0CF_ 08F_ 04F_

2-103000-L0 MF521-3N, B2_12

cercle chromatique Y_ en 8 parliers

2-103000-L0 MF521-4N, B2_13

Diagram of color relationships (W, Y, B, R, N, G)

2-103000-L0 MF520-5N, B2_06

Diagram of color relationships (W, Y, B, R, N, G)

2-103000-L0 MF520-6N, B2_07

cercle chromatique Y_ en 8 parliers

2-103000-L0 MF521-4N, B2_13

Diagram of color relationships (W, L*, C*, N, R)

2-103000-L0 MF521-6N, B2_16

Diagram of color relationships (W, Y, B, R, N, G)

2-103000-L0 MF520-7N, B2_08

couleur périphérique : jaune Y_

critère: ni... ni...

hex-code pour rgb_ et cmy_

9F0_ BF0_ DF0_ FF0_ FD0_ FB0_ F90_ 60F_ 40F_ 20F_ 00F_ 02F_ 04F_ 06F_

2-103000-L0 MF520-8N, B2_09

Diagram of color relationships (W, L*, C*, N, R)

2-103000-L0 MF521-7N, B2_15

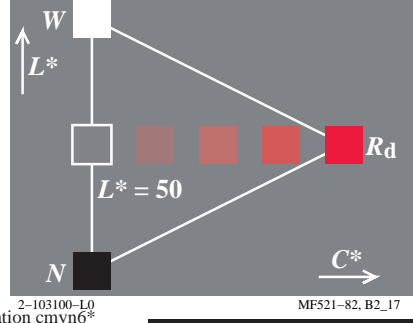
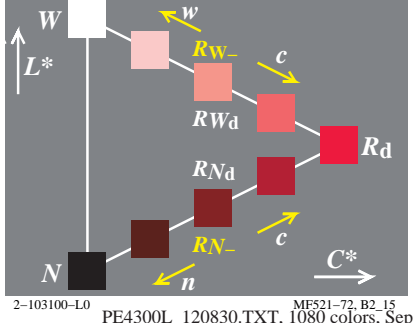
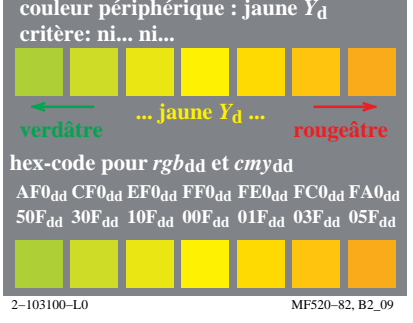
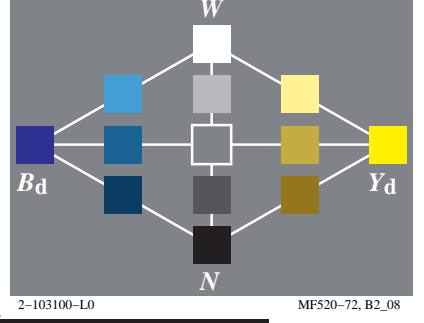
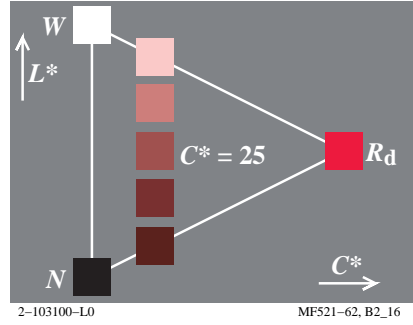
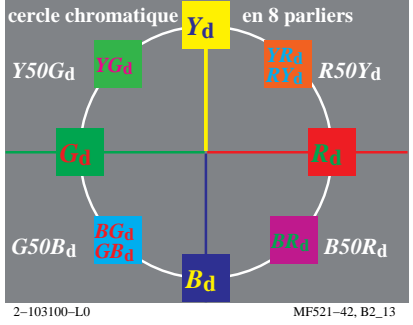
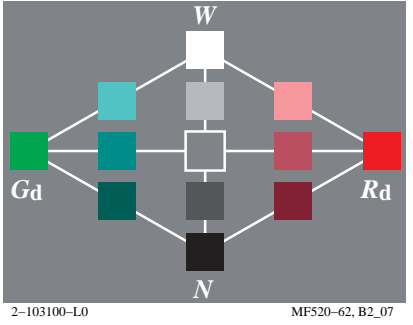
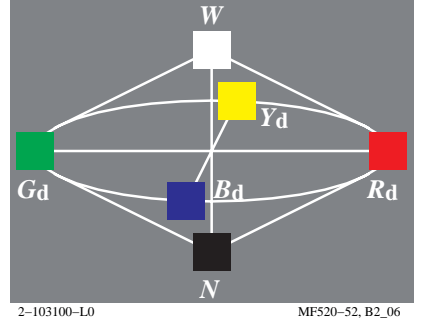
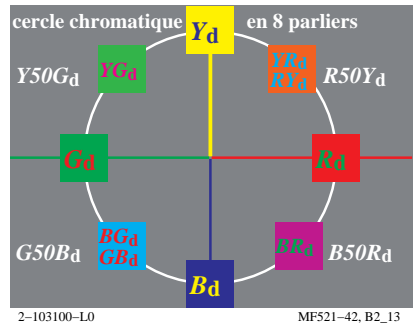
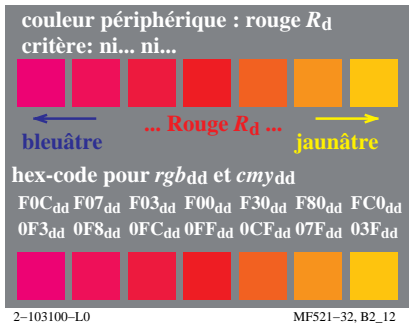
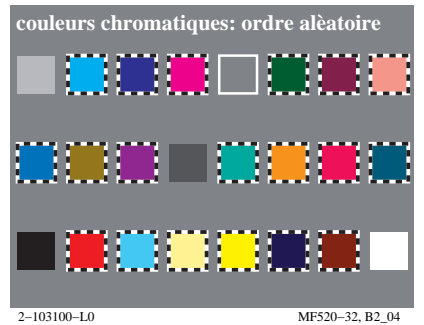
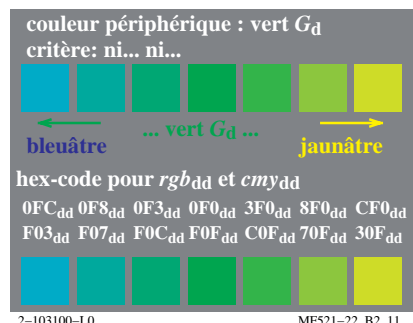
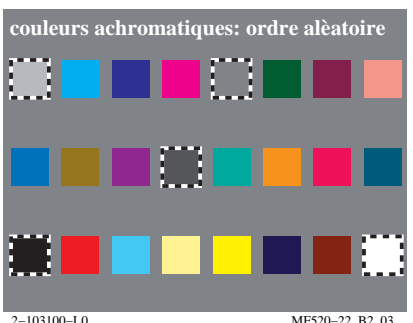
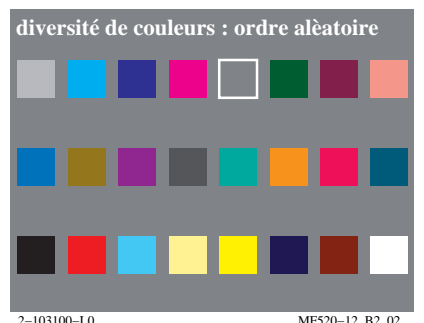
Diagram of color relationships (W, L*, C*, N, R)

2-103000-L0 MF521-8N, B2_17



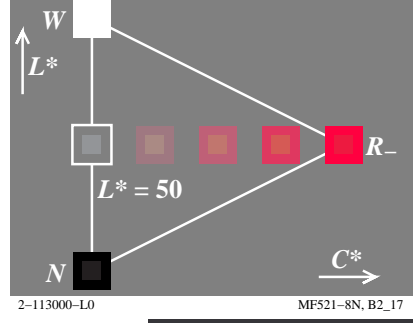
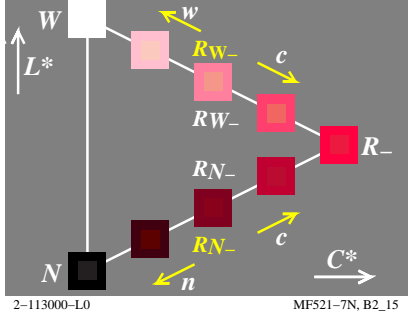
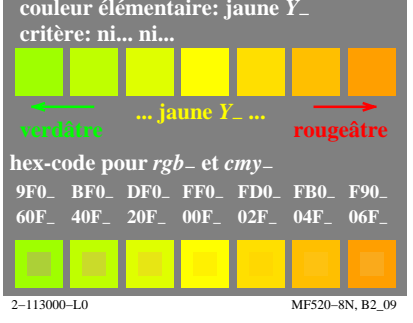
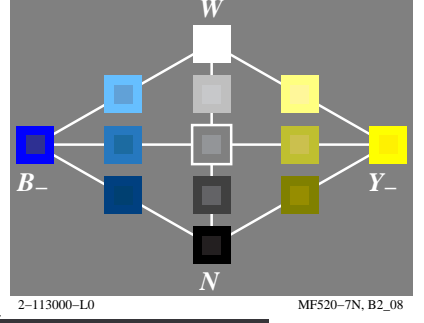
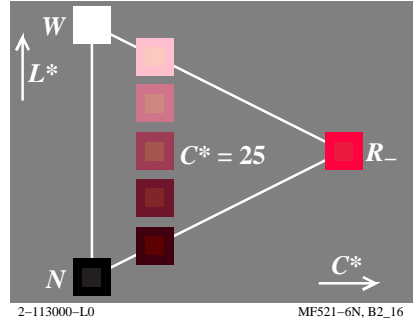
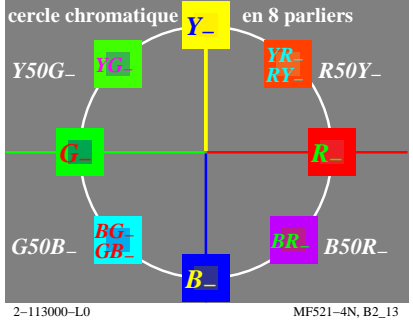
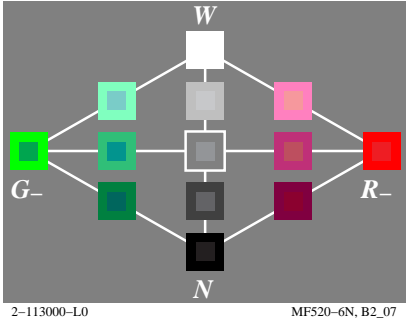
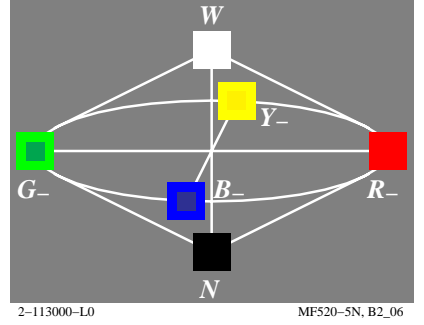
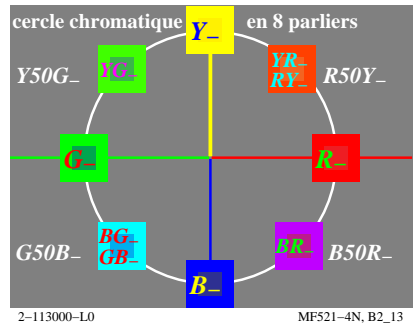
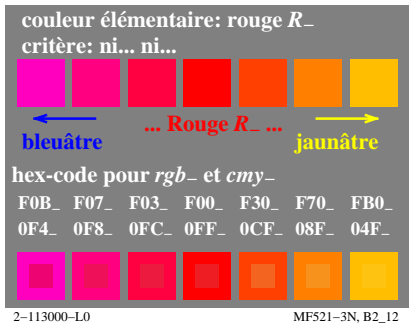
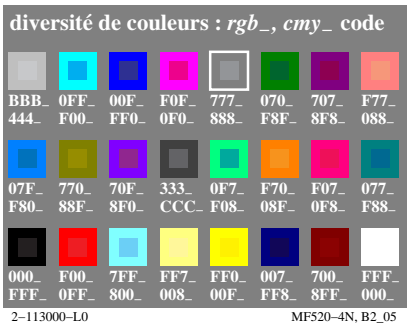
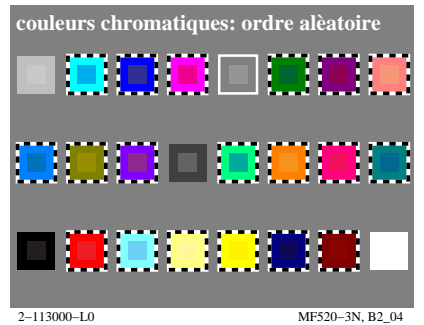
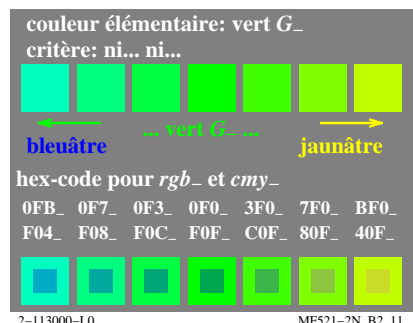
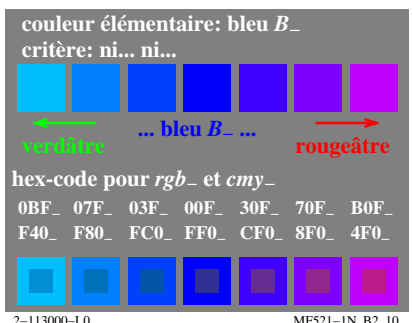
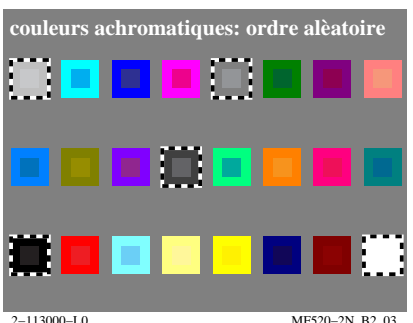
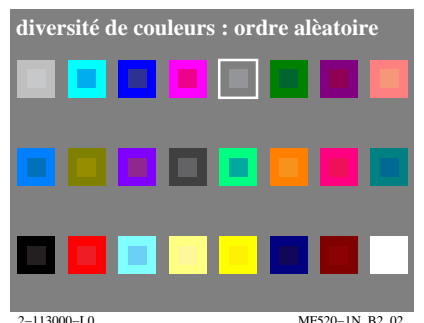
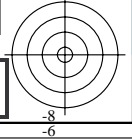
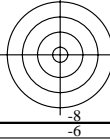
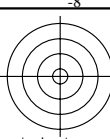
voir fichiers similaires: <http://farbe.li.tu-berlin.de/MF52/MF52.HTM>
<http://130.149.60.45/~farbmetrik> ou <http://farbe.li.tu-berlin.de>

TUB enregistrement: 20190801-MF52/MF52L0FP.PDF / .PS
application pour la mesure de sortie sur écran, aucune séparation
TUB matériel: code=rh4ta



voir fichiers similaires: <http://farbe.li.tu-berlin.de/MF52/MF52.HTM>
<http://130.149.60.45/~farbmetrik> ou <http://farbe.li.tu-berlin.de>

TUB enregistrement: 20190801-MF52/MF52L0FP.PDF / .PS
application pour la mesure de sortie sur écran



voir fichiers similaires: <http://farbe.li.tu-berlin.de/MF52/MF52.HTM>
<http://130.149.60.45/~farbmetrik> ou <http://farbe.li.tu-berlin.de>

TUB enregistrement: 20190801-MF52/MF52L0FP.PDF / .PS
application pour la mesure de sortie sur écran, aucune séparation
TUB matériel: code=rh4ta

