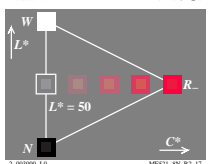
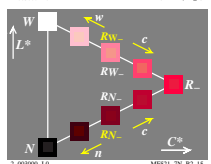
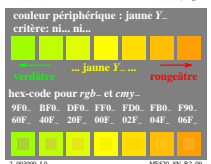
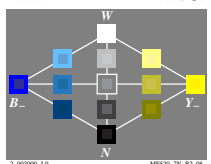
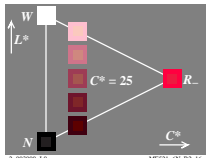
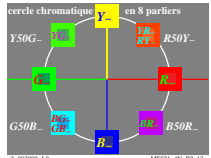
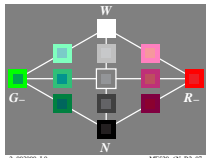
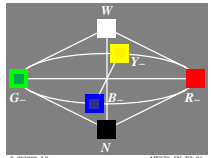
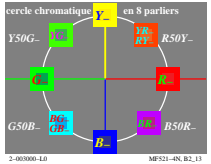
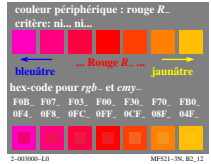
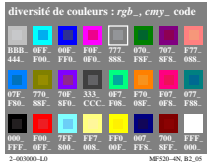
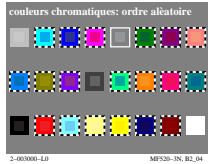
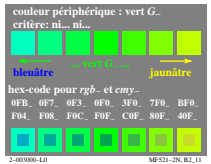
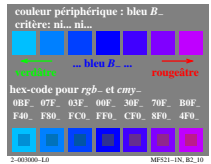
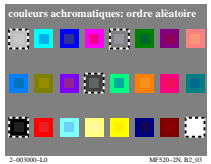
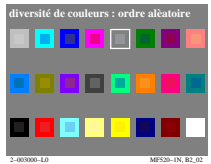


http://farbe.li.tu-berlin.de/MF52/MF52L0N0.TXT /PS; sortie de production  
N: aucune linéarisation 3D (OL) dans fichier (F) ou PS-startup (S), page 1/1

voir fichiers similaires: [http://130.149.60.45/~farbnetrik](http://farbe.li.tu-berlin.de/MF52/MF52.HTM) ou <http://farbe.li.tu-berlin.de>



Graphique TUB-MF52; les infographies et colorimétrie  
Collection d'image MF52, 3D=0, de=0

entrée : rgb/cmyk -> rgb/cmyk  
sortie : aucun changement

TUB enregistrément: 20190801-MF52/MF52L0N0.TXT /PS  
application pour la mesure de sortie sur écran

TUB matériel: code=thata