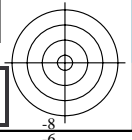
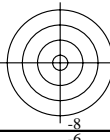
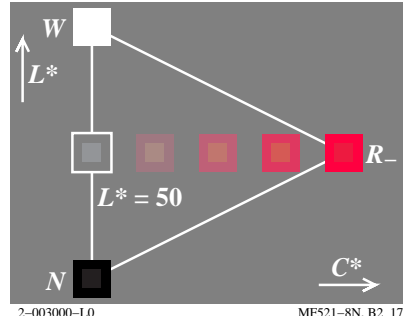
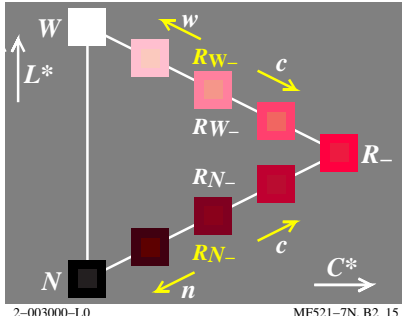
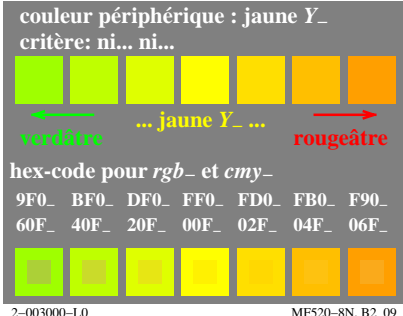
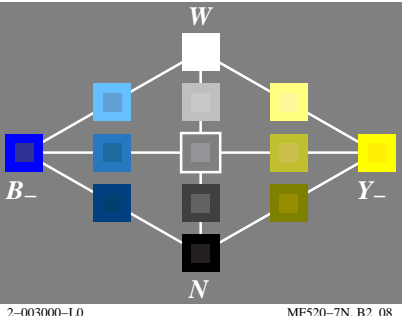
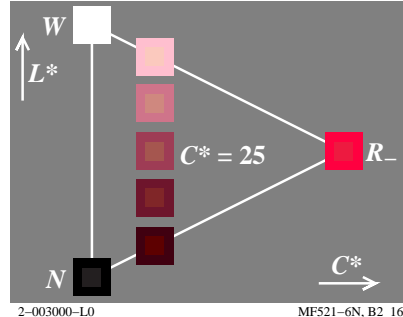
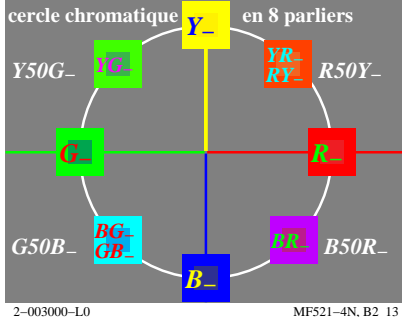
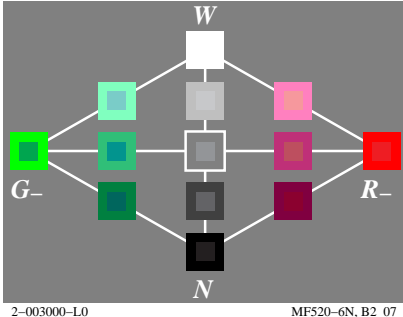
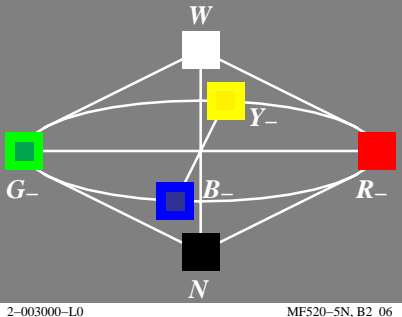
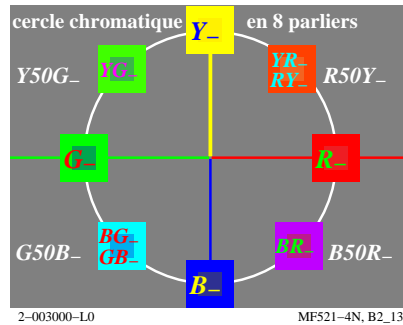
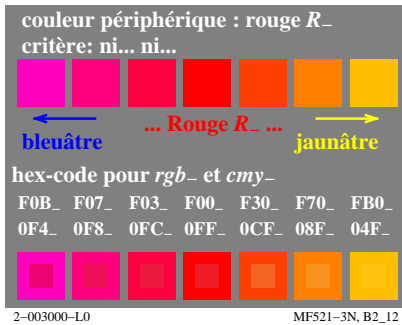
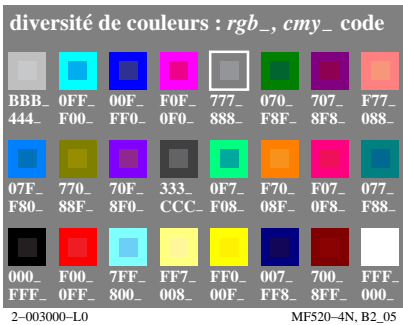
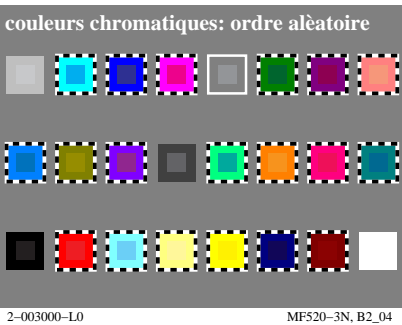
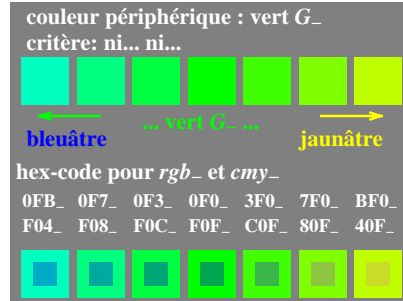
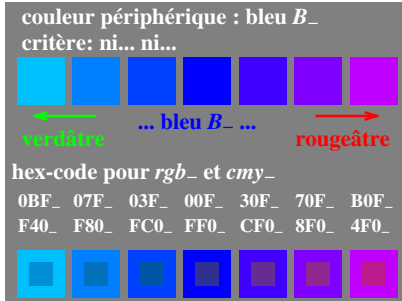
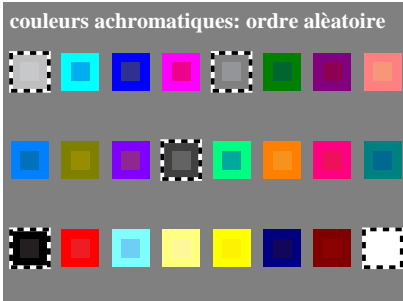
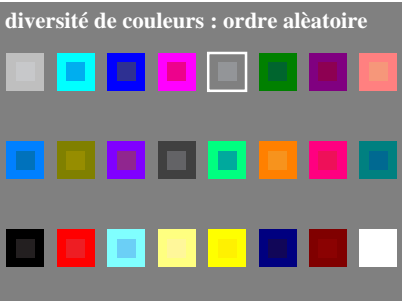
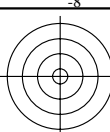


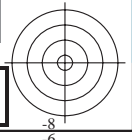
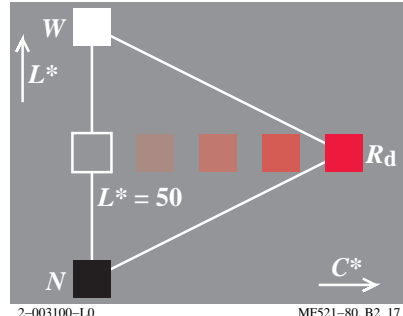
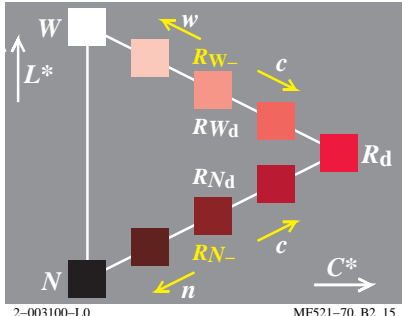
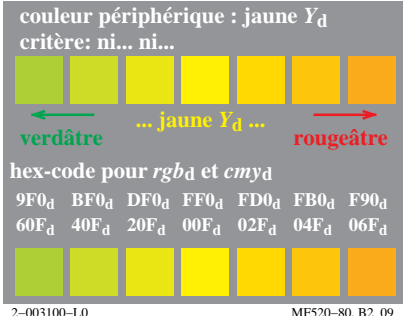
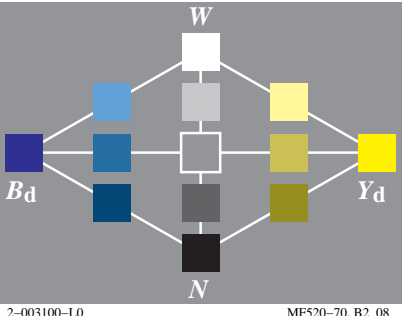
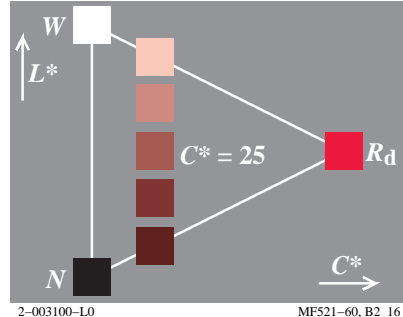
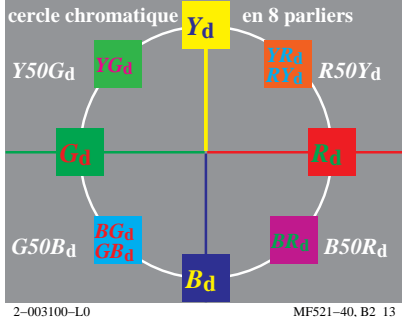
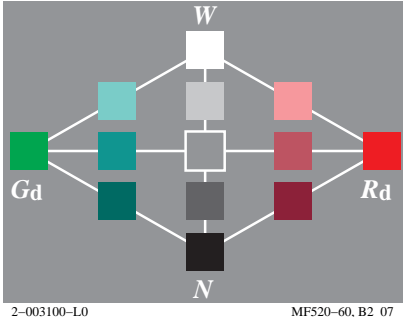
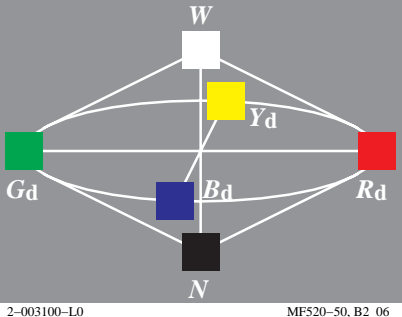
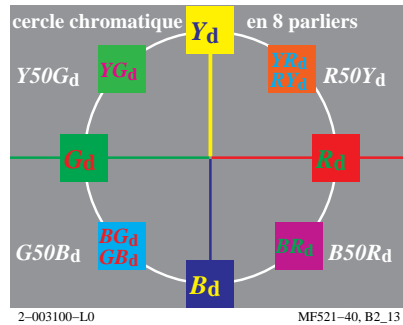
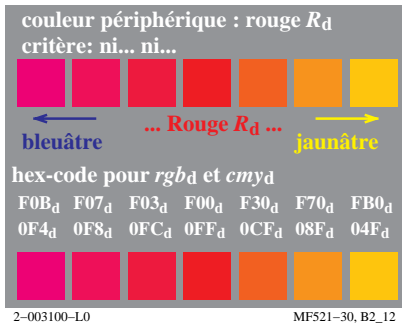
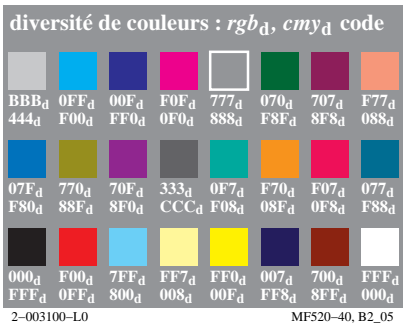
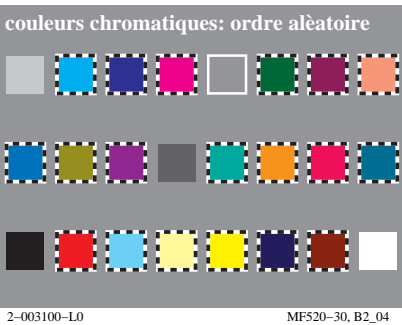
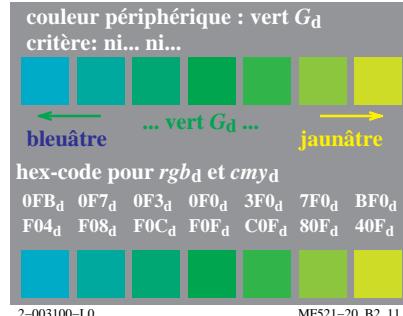
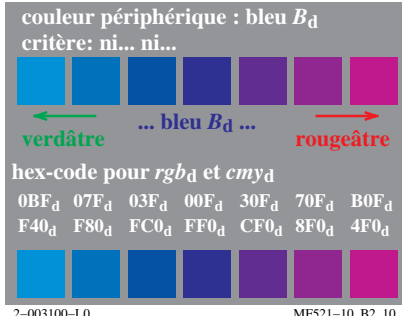
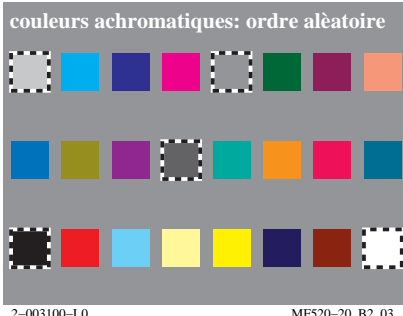
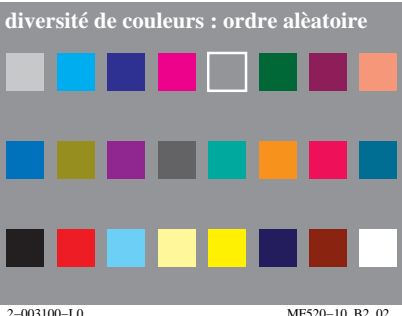
voir fichiers similaires: http://farbe.li.tu-berlin.de/MF52/MF52.HTM
http://130.149.60.45/~farbmetrik ou http://farbe.li.tu-berlin.de

TUB enregistrement: 20190801-MF52/MF52L0NA.TXT /.PS
application pour la mesure de sortie sur écran



voir fichiers similaires: http://farbe.li.tu-berlin.de/MF52/MF52.HTM
http://130.149.60.45/~farbmetrik ou http://farbe.li.tu-berlin.de

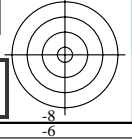
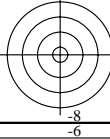
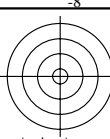
TUB enregistrement: 20190801-MF52/MF52L0NA.TXT /.PS TUB matériel: code=rh4ta
application pour la mesure de sortie sur écran, aucune séparation



voir fichiers similaires: http://farbe.li.tu-berlin.de/MF52/MF52.HTM
http://130.149.60.45/~farbmetrik ou http://farbe.li.tu-berlin.de

TUB enregistrement: 20190801-MF52/MF52L0NA.TXT /.PS
application pour la mesure de sortie sur écran

TUB matériel: code=rh4ta



diversité de couleurs : ordre aléatoire

2-013000-L0 MF520-1N, B2_02

couleurs achromatiques: ordre aléatoire

2-013000-L0 MF520-2N, B2_03

couleur élémentaire: bleu B_

critère: ni... ni...

verdâtre ... bleu B_ ... rougeâtre

hex-code pour rgb_ et cmy_

0BF_ 07F_ 03F_ 00F_ 30F_ 70F_ B0F_ F40_ F80_ FC0_ FF0_ CF0_ 8F0_ 4F0_

2-013000-L0 MF521-1N, B2_10

couleur élémentaire: vert G_

critère: ni... ni...

bleuâtre ... vert G_ ... jaunâtre

hex-code pour rgb_ et cmy_

0FB_ 0F7_ 0F3_ 0F0_ 3F0_ 7F0_ BF0_ F04_ F08_ F0C_ F0F_ C0F_ 80F_ 40F_

2-013000-L0 MF521-2N, B2_11

couleurs chromatiques: ordre aléatoire

2-013000-L0 MF520-3N, B2_04

diversité de couleurs : rgb_, cmy_ code

BBB_ 0FF_ 00F_ F0F_ 777_ 070_ 707_ F77_ 444_ F00_ FF0_ 0F0_ 888_ F8F_ 8F8_ 088_

07F_ 770_ 70F_ 333_ 0F7_ F70_ F07_ 077_ F80_ 88F_ 8F0_ CCC_ F08_ 08F_ 0F8_ F88_

000_ F00_ 7FF_ FF7_ FF0_ 007_ 700_ FFF_ FFF_ 0FF_ 800_ 008_ 00F_ FF8_ 8FF_ 000_

2-013000-L0 MF520-4N, B2_05

couleur élémentaire: rouge R_

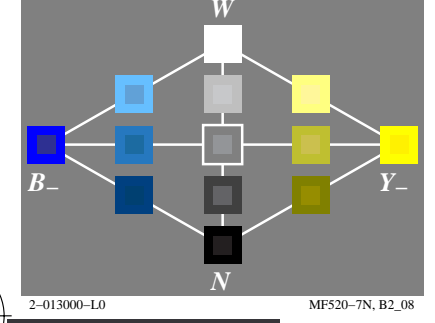
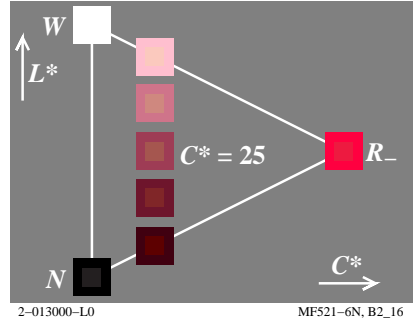
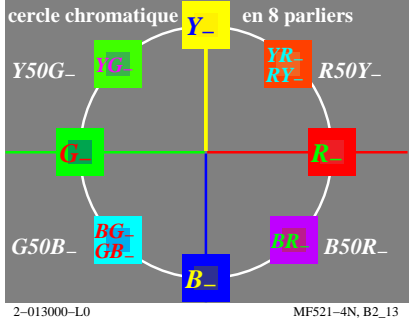
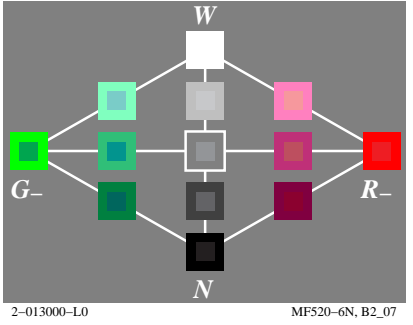
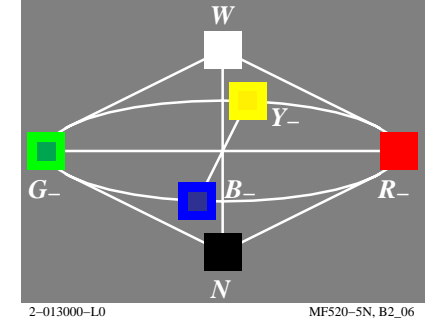
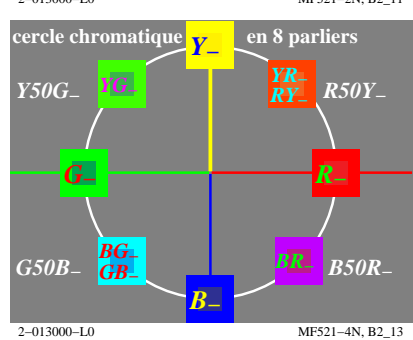
critère: ni... ni...

bleuâtre ... Rouge R_ ... jaunâtre

hex-code pour rgb_ et cmy_

F0B_ F07_ F03_ F00_ F30_ F70_ FB0_ 0F4_ 0F8_ 0FC_ 0FF_ 0CF_ 08F_ 04F_

2-013000-L0 MF521-3N, B2_12



couleur élémentaire: jaune Y_

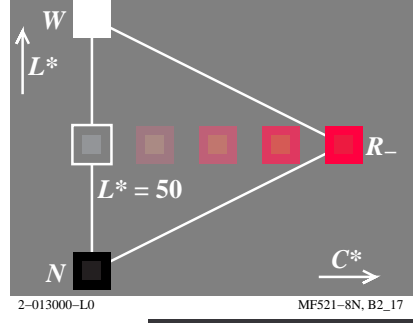
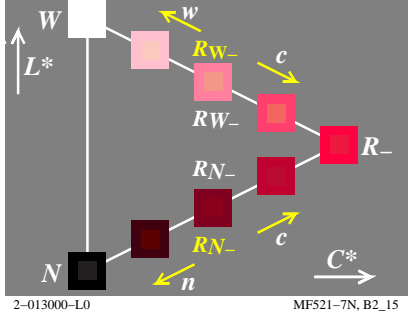
critère: ni... ni...

verdâtre ... jaune Y_ ... rougeâtre

hex-code pour rgb_ et cmy_

9F0_ BF0_ DF0_ FF0_ FD0_ FB0_ F90_ 60F_ 40F_ 20F_ 00F_ 02F_ 04F_ 06F_

2-013000-L0 MF520-8N, B2_09



voir fichiers similaires: http://farbe.li.tu-berlin.de/MF52/MF52.HTM
http://130.149.60.45/~farbmetrik ou http://farbe.li.tu-berlin.de

TUB enregistrement: 20190801-MF52/MF52L0NA.TXT /.PS TUB matériel: code=rh4ta
application pour la mesure de sortie sur écran, aucune séparation

