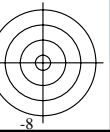
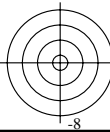
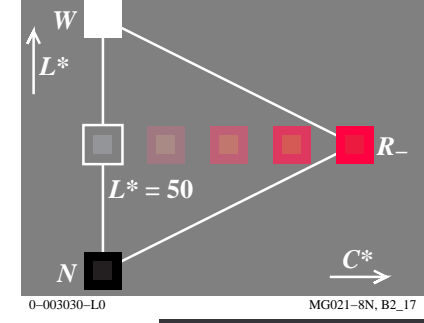
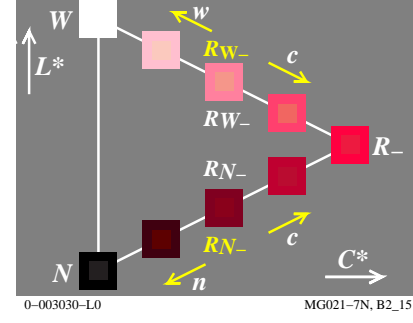
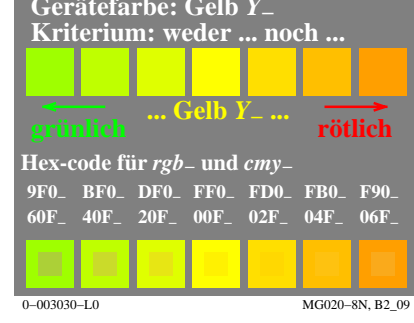
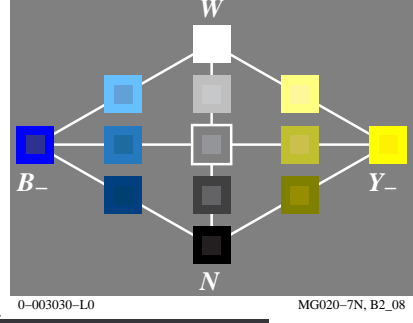
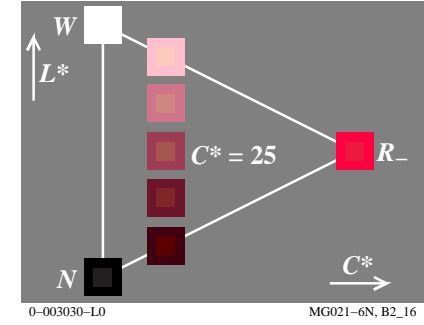
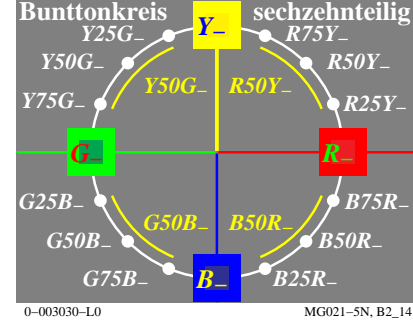
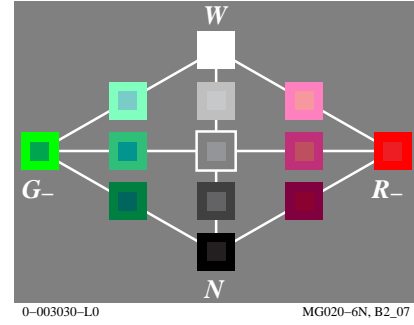
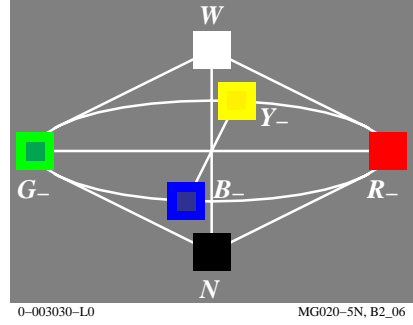
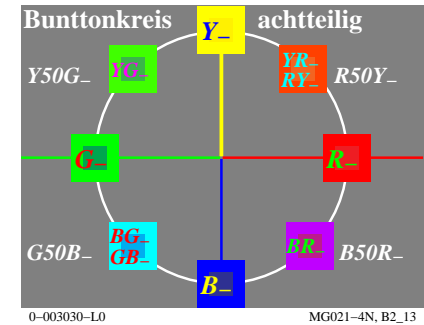
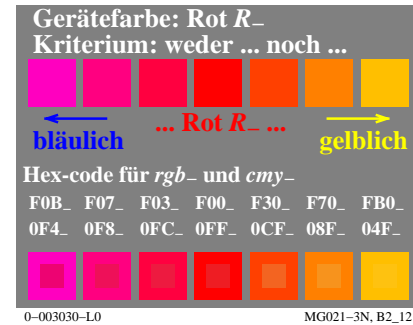
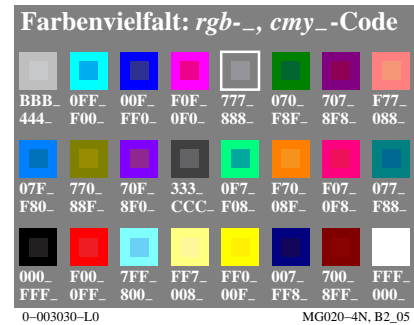
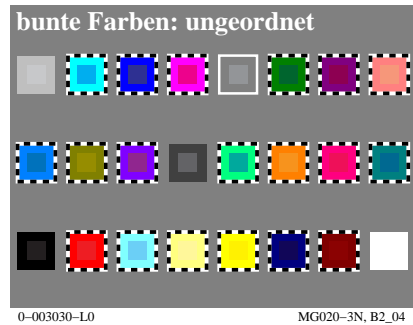
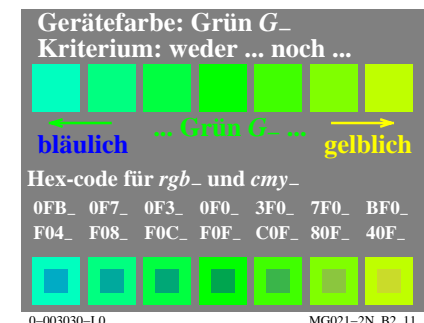
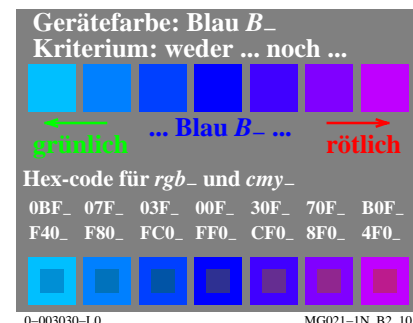
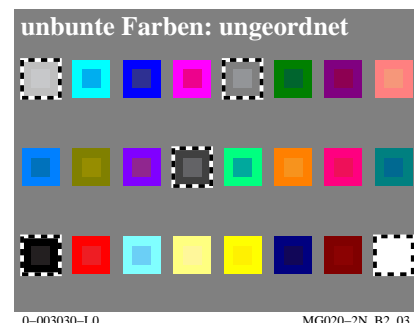
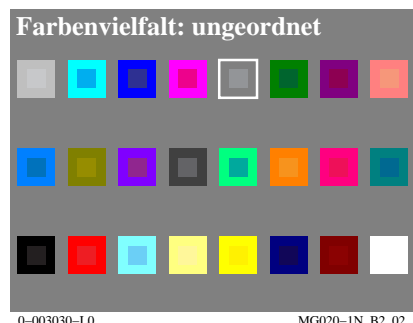
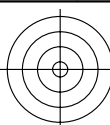


Siehe ähnliche Dateien: <http://130.149.60.45/~farbmetrik/MG02/MG02.HTM>  
Technische Information: <http://www.ps.bam.de> oder <http://130.149.60.45/~farbmetrik>

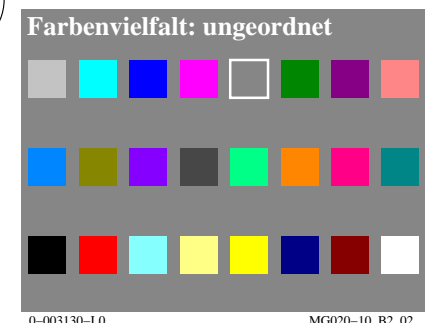
TUB-Registrierung: 20130201-MG02/MG02L0NP.PDF /.PS  
Anwendung für Messung von Display-Ausgabe

TUB-Material: Code=rh4ta

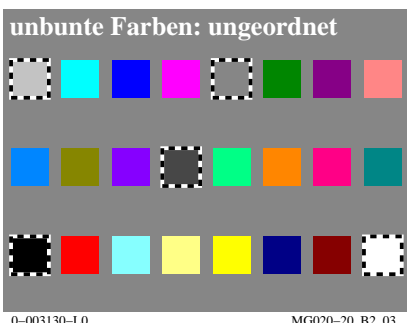


Siehe ähnliche Dateien: <http://130.149.60.45/~farbmetrik/MG02/MG02.HTM>  
Technische Information: <http://www.ps.bam.de> oder <http://130.149.60.45/~farbmetrik>

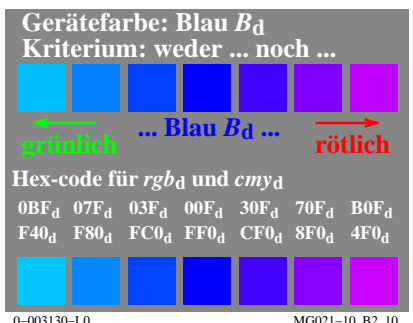
TUB-Registrierung: 20130201-MG02/MG02L0NP.PDF /.PS TUB-Material: Code=rh4ta  
Anwendung für Messung von Display-Ausgabe, keine Separation



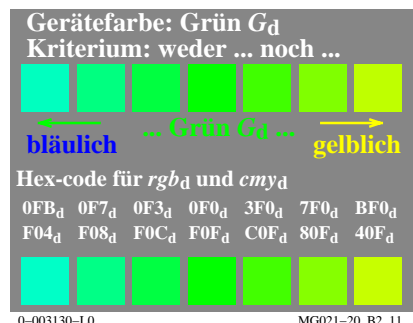
0-003130-L0 MG020-10, B2\_02



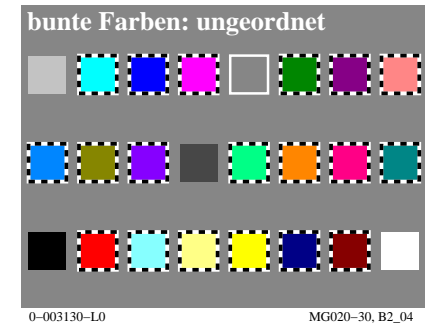
0-003130-L0 MG020-20, B2\_03



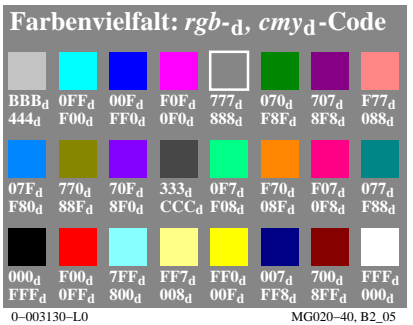
0-003130-L0 MG021-10, B2\_10



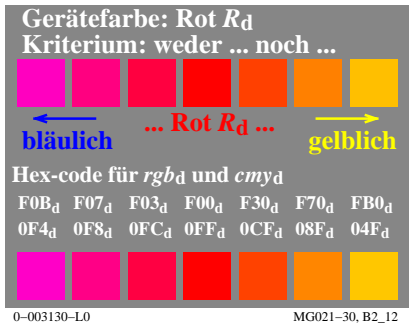
0-003130-L0 MG021-20, B2\_11



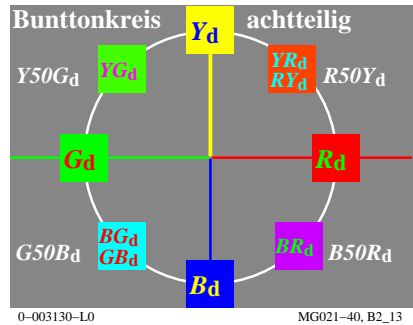
0-003130-L0 MG020-30, B2\_04



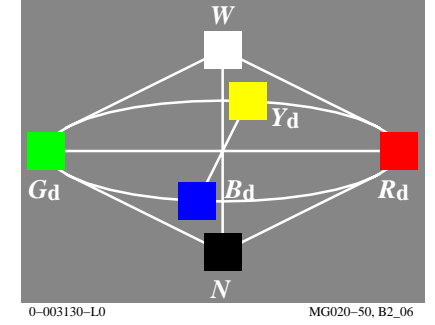
0-003130-L0 MG020-40, B2\_05



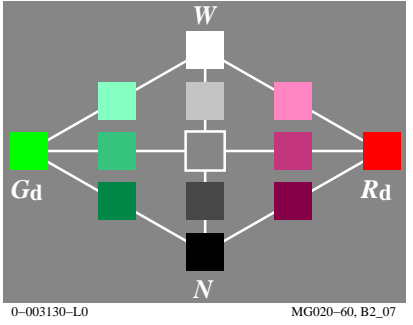
0-003130-L0 MG021-30, B2\_12



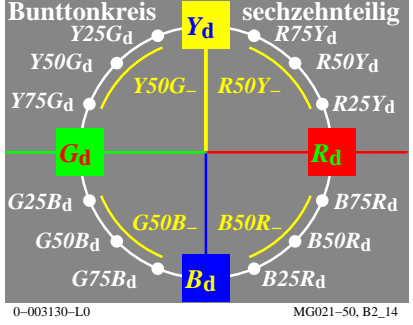
0-003130-L0 MG021-40, B2\_13



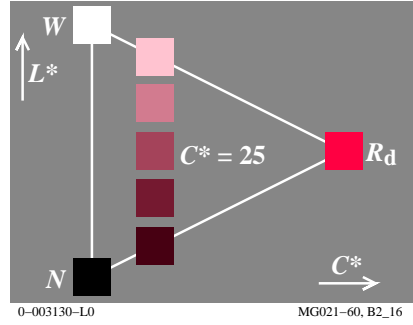
0-003130-L0 MG020-50, B2\_06



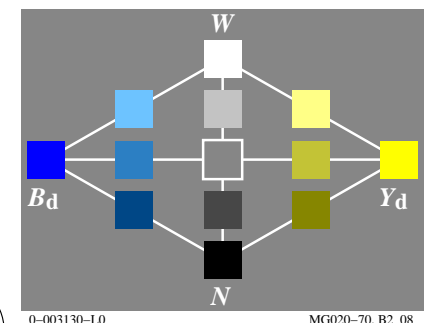
0-003130-L0 MG020-60, B2\_07



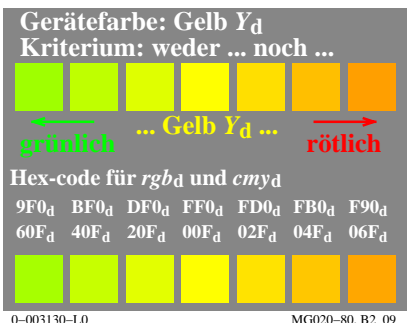
0-003130-L0 MG021-50, B2\_14



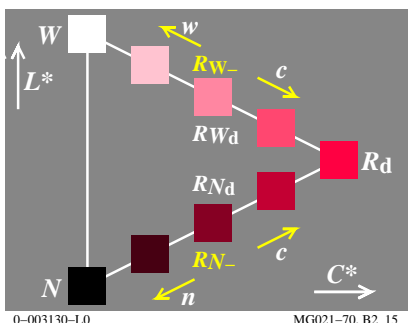
0-003130-L0 MG021-60, B2\_16



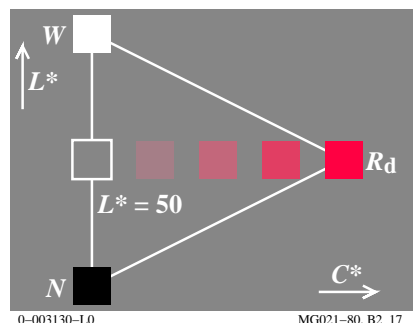
0-003130-L0 MG020-70, B2\_08



0-003130-L0 MG020-80, B2\_09



0-003130-L0 MG021-70, B2\_15

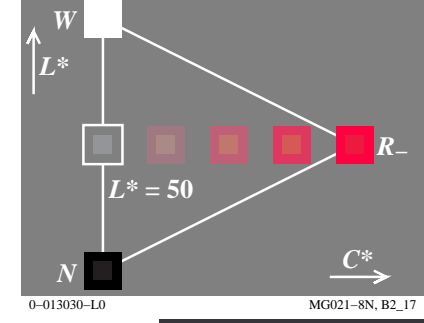
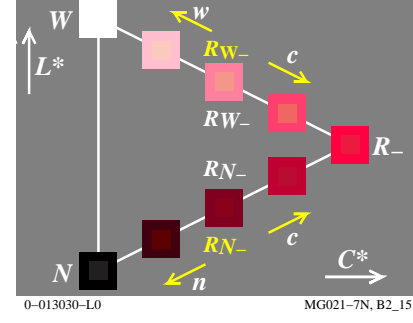
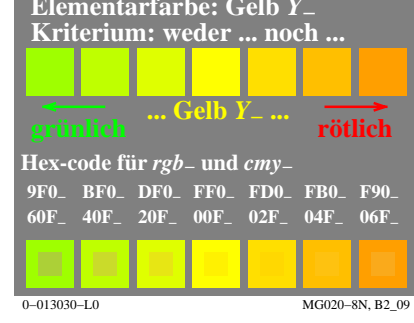
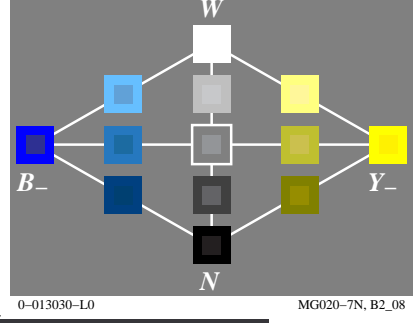
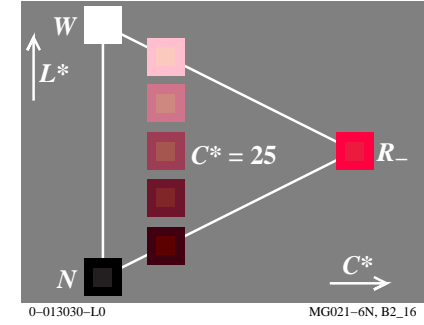
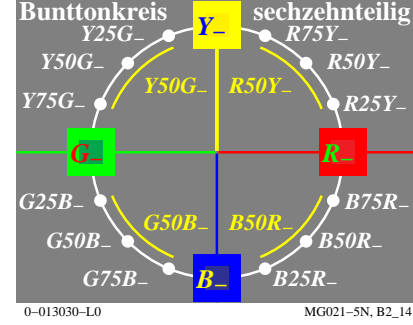
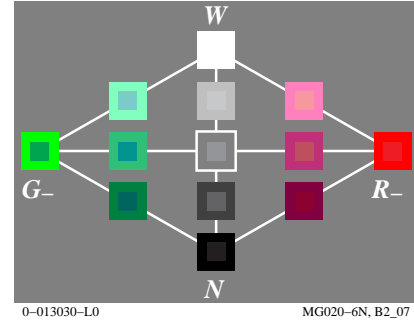
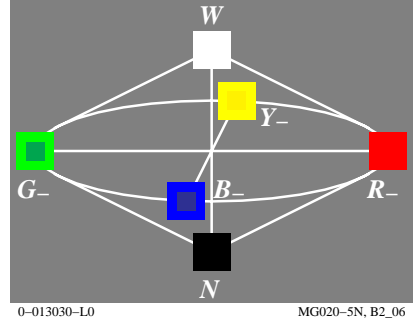
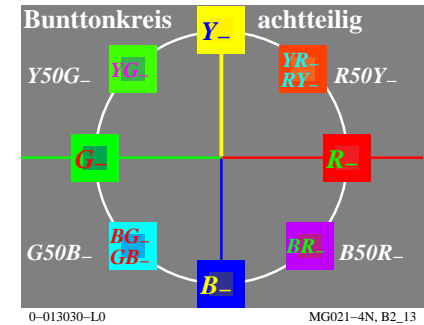
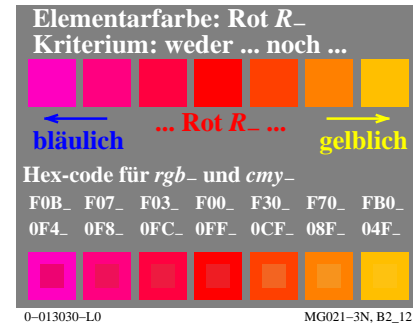
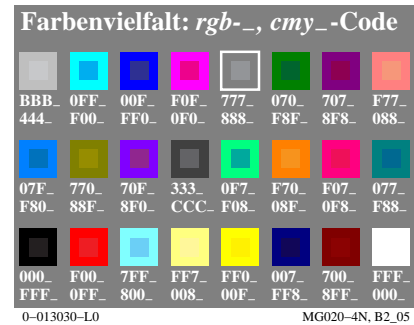
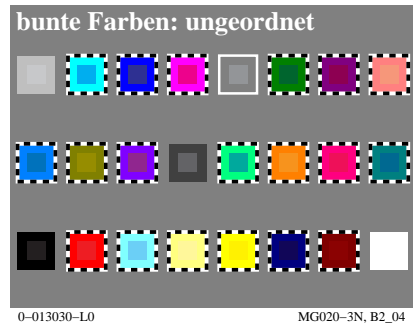
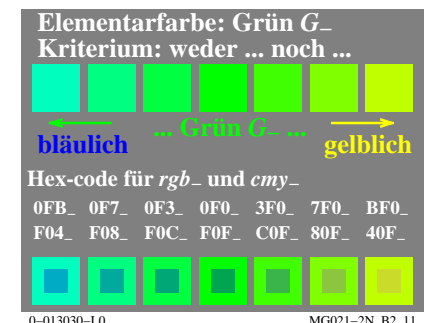
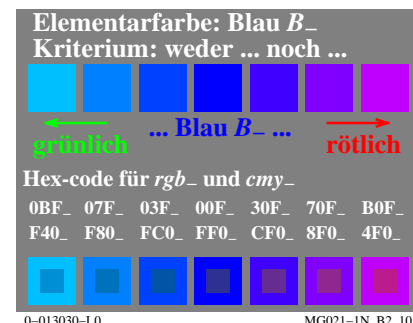
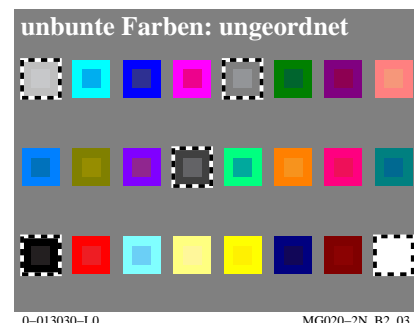
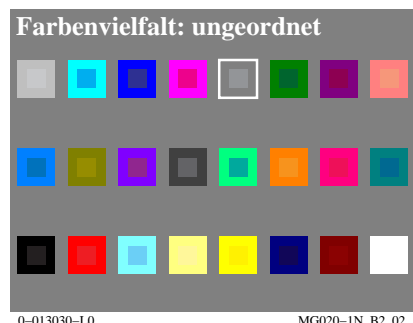


0-003130-L0 MG021-80, B2\_17

Siehe ähnliche Dateien: <http://130.149.60.45/~farbmetrik/MG02/MG02.HTM>  
Technische Information: <http://www.ps.bam.de> oder <http://130.149.60.45/~farbmetrik>

TUB-Registrierung: 20130201-MG02/MG02L0NP.PDF /.PS  
Anwendung für Messung von Display-Ausgabe

TUB-Material: Code=rh4ta



Siehe ähnliche Dateien: <http://130.149.60.45/~farbmetrik/MG02/MG02.HTM>  
Technische Information: <http://www.ps.bam.de> oder <http://130.149.60.45/~farbmetrik>

TUB-Registrierung: 20130201-MG02/MG02L0NP.PDF /.PS TUB-Material: Code=rh4ta  
Anwendung für Messung von Display-Ausgabe, keine Separation

