

http://farbe.li.tu-berlin.de/MI02/MI02LOFP.PDF /.PS; inizio dell'output
F: linearizzazione 3D MI02/MI02LI30FP.DAT nel file (F), pagine 1/2

vedi file simili: <http://farbe.li.tu-berlin.de/MI02/MI02.HTM>
<http://130.149.60.45/~farbmatrik> o <http://farbe.li.tu-berlin.de>

iscrizione TUB: 20160501-MI02/MI02LOFP.PDF /.PS
Applicazione per la misura dell'output su display

TUB materiale: code=rh4ta

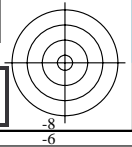
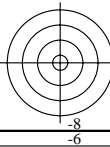
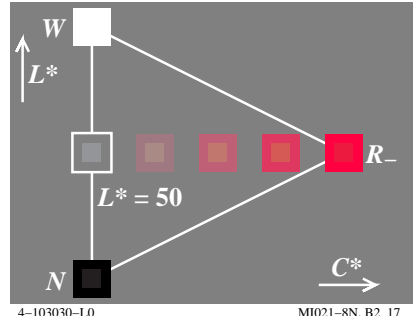
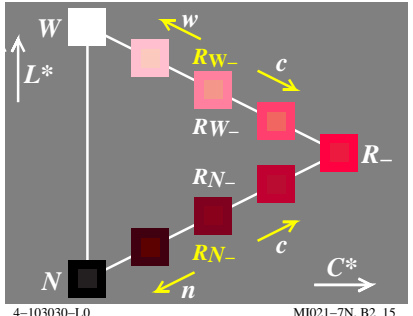
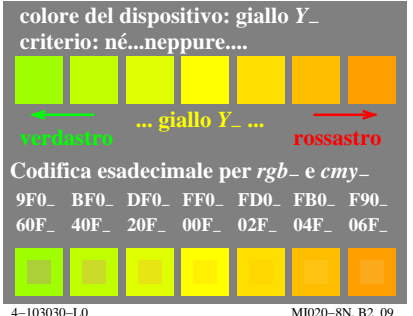
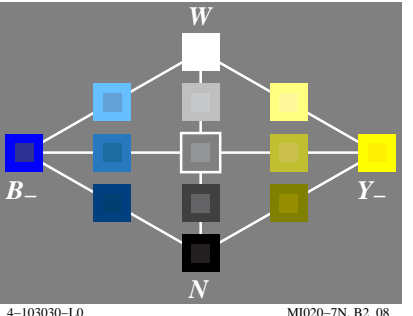
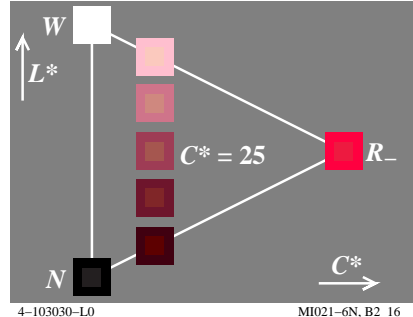
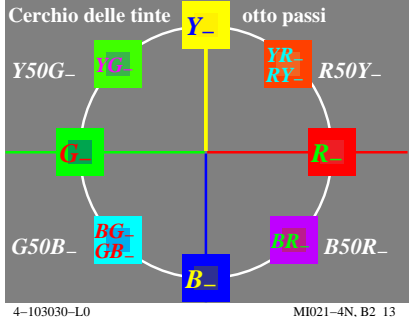
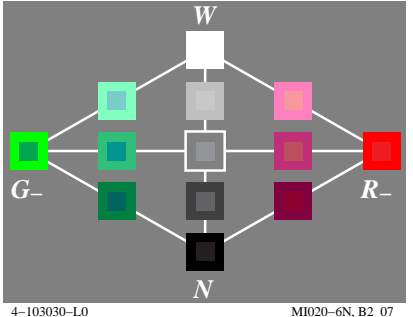
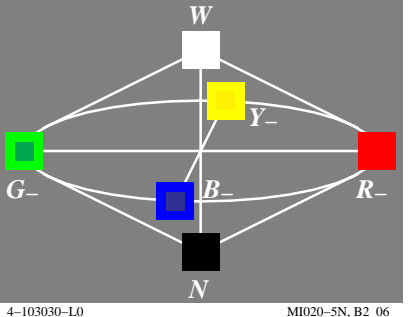
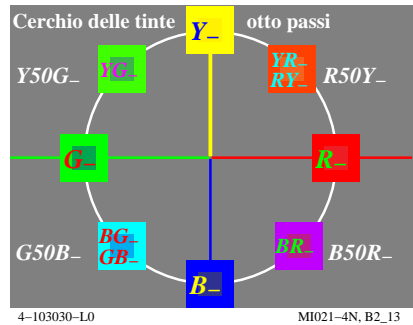
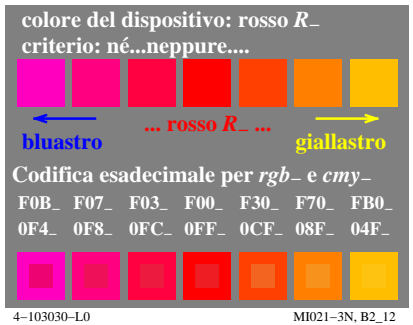
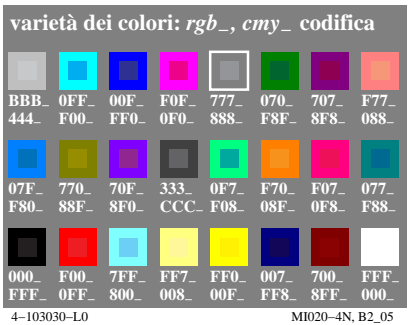
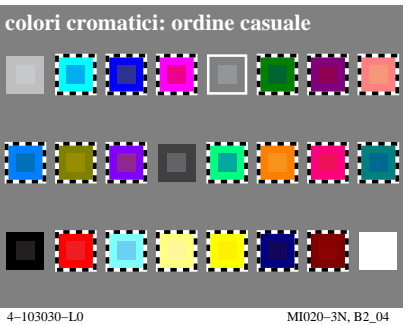
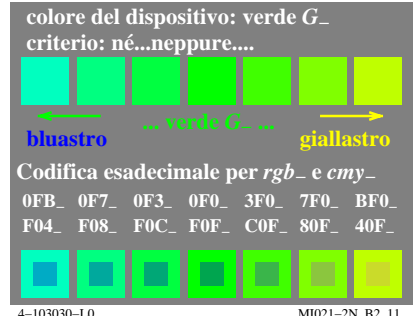
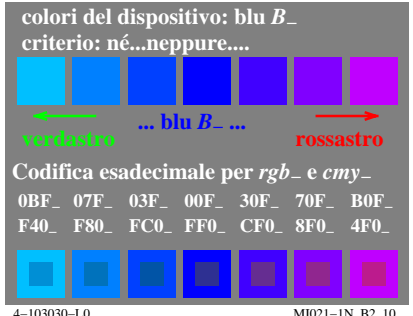
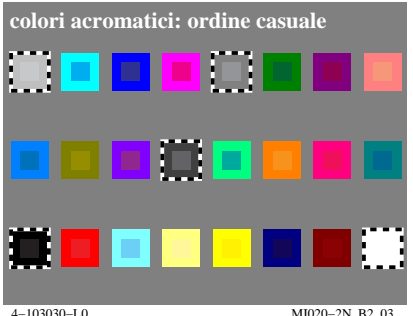
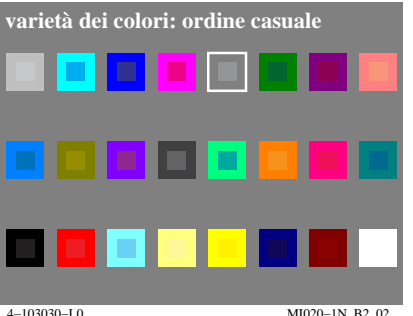
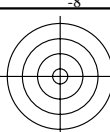
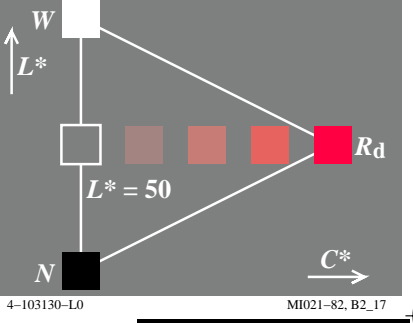
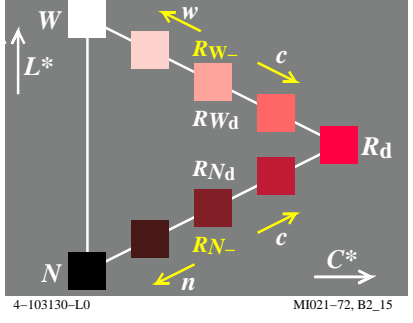
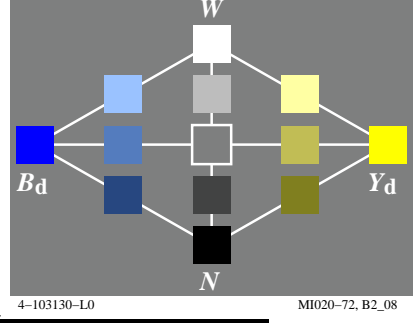
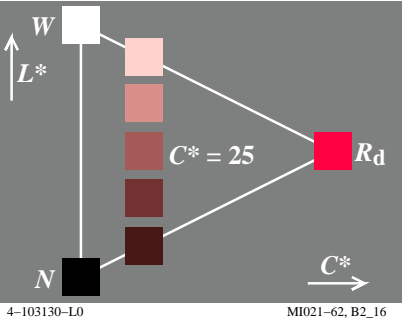
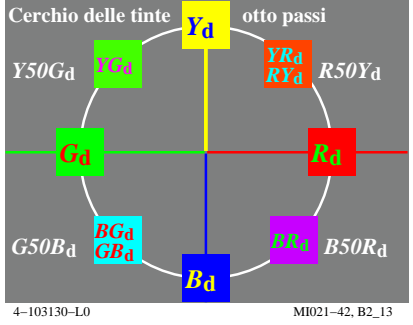
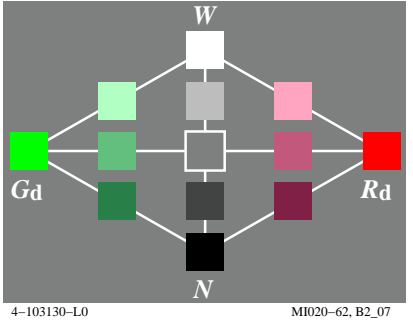
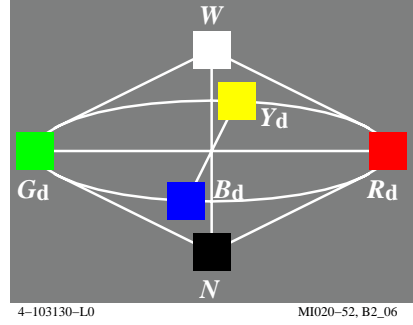
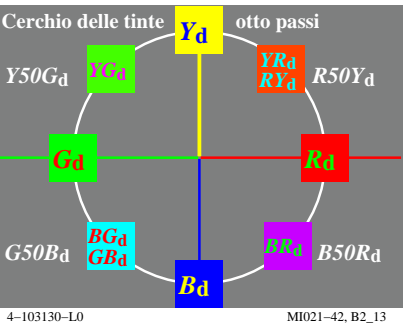
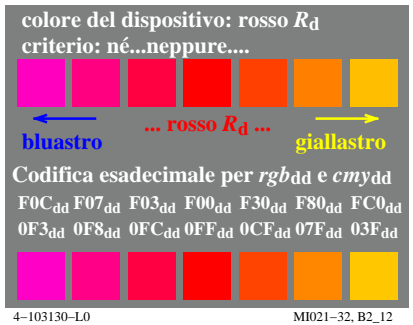
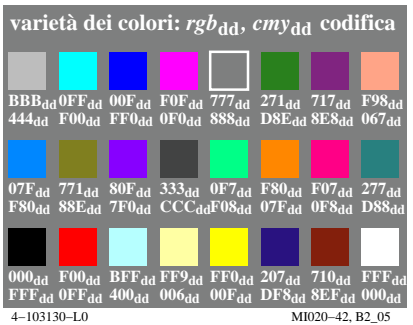
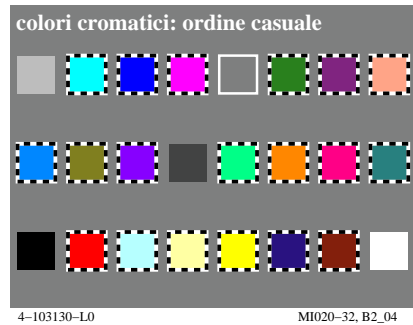
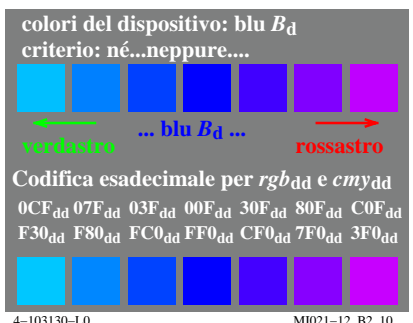
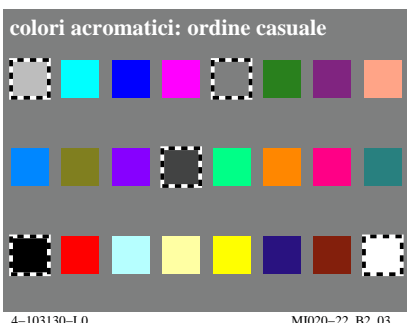
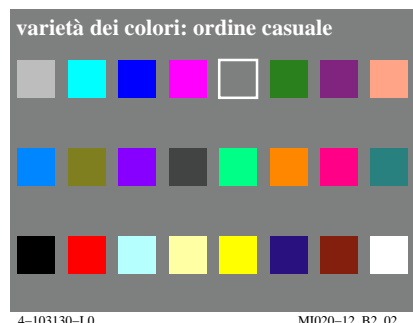


Grafico TUB-MI02; Grafica computerizzata e colorimetria
Serie di immagini MI02, 3D=1, de=0

Input: rgb/cmyk -> rgb/cmyk
Output: nessun cambiamento

vedi file simili: <http://farbe.li.tu-berlin.de/MI02/MI02.HTM>
<http://130.149.60.45/~farbmatrik> o <http://farbe.li.tu-berlin.de>

iscrizione TUB: 20160501-MI02/MI02LOFP.PDF /.PS
Applicazione per la misura dell'output su display, nessuna separazione
TUB materiale: code=rh4ta



http://farbe.li.tu-berlin.de/MI02/MI02LOFP.PDF /.PS; inizio dell'output
F: linearizzazione 3D MI02/MI02LI30FP.DAT nel file (F), pagine 1/2

vedi file simili: <http://farbe.li.tu-berlin.de/MI02/MI02.HTM>
<http://130.149.60.45/~farbmatrik> o <http://farbe.li.tu-berlin.de>

iscrizione TUB: 20160501-MI02/MI02LOFP.PDF /.PS
Applicazione per la misura dell'output su display

TUB materiale: code=rh4ta

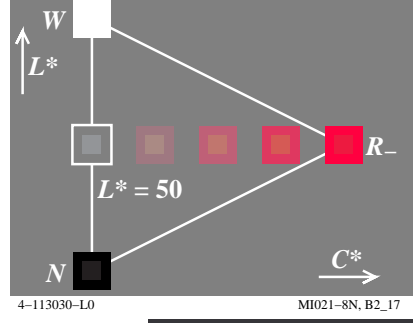
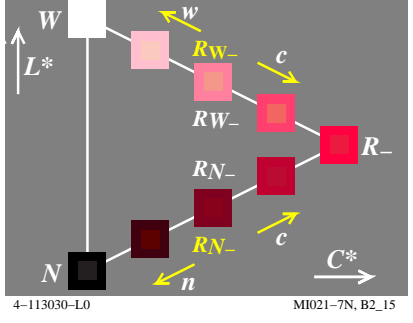
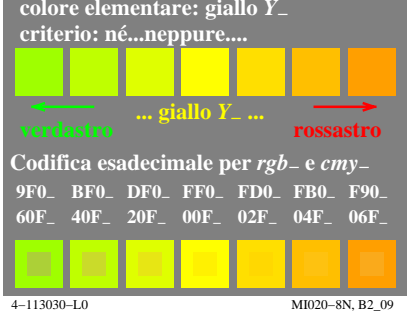
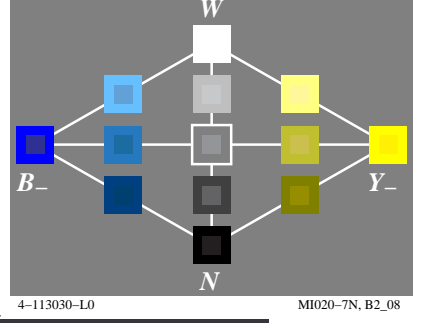
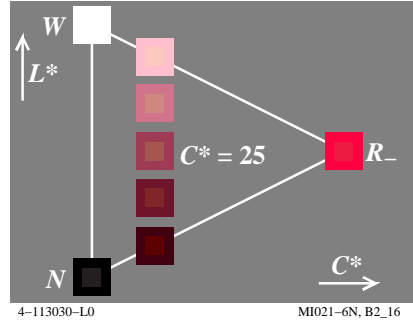
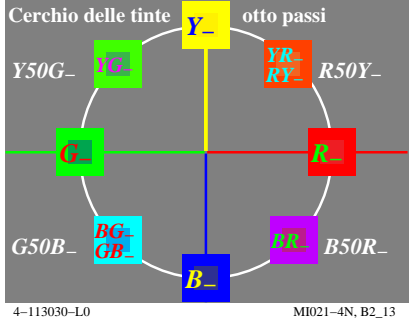
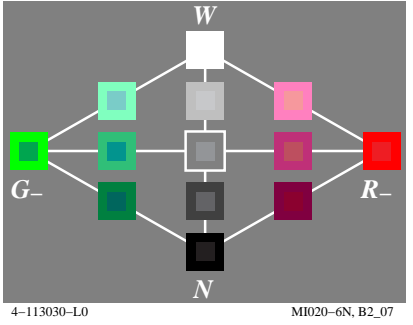
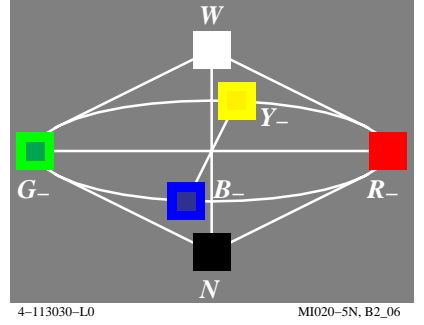
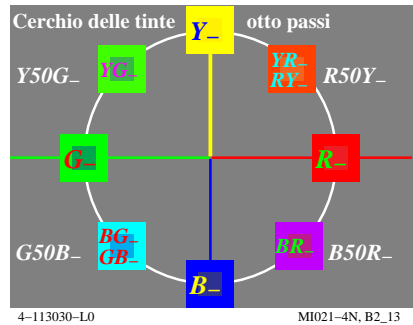
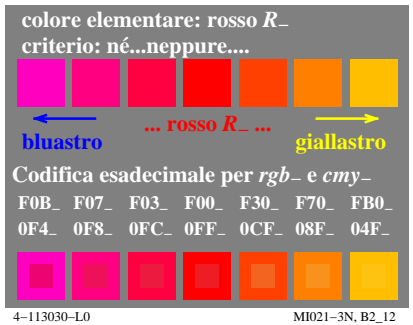
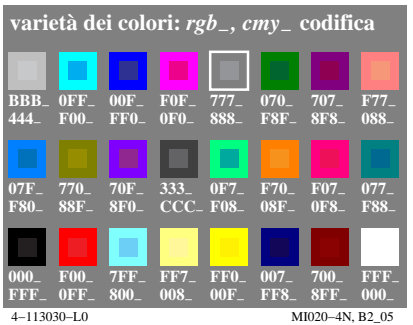
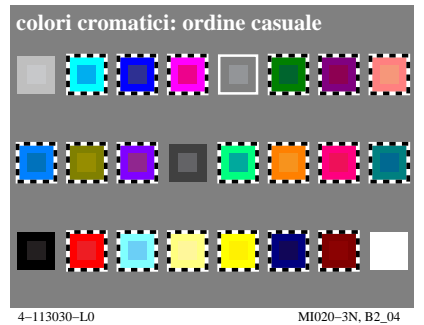
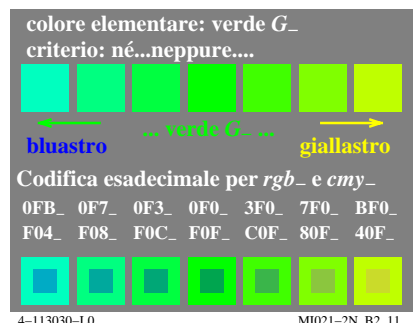
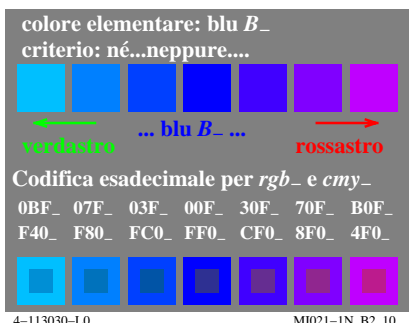
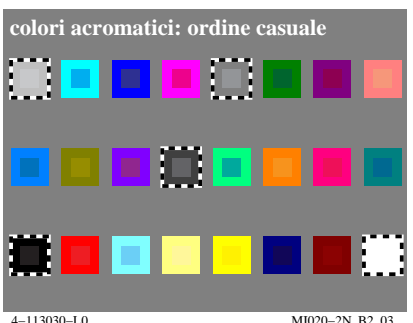
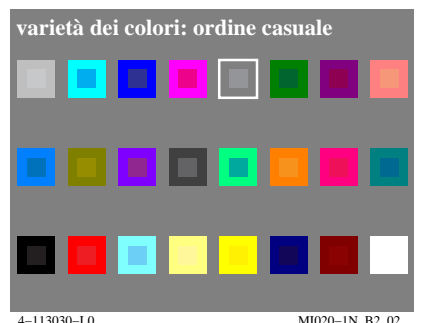
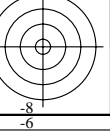


Grafico TUB-MI02; Grafica computerizzata e colorimetria
Serie di immagini MI02, 3D=1, de=1

Input: rgb/cmyk -> rgb/cmyk
Output: nessun cambiamento



vedi file simili: <http://farbe.li.tu-berlin.de/MI02/MI02.HTM>
<http://130.149.60.45/~farbmatrik> o <http://farbe.li.tu-berlin.de>

iscrizione TUB: 20160501-MI02/MI02LOFP.PDF /.PS
Applicazione per la misura dell'output su display, nessuna separazione
TUB materiale: code=rh4ta

