

http://farbe.li.tu-berlin.de/MI02/MI02L0NP.PDF /.PS; inizio dell'output  
N: nessuna linearizzazione 3D (OL) nel file (F) o PS-startup (S), pagine 1/2

vedi file simili: <http://farbe.li.tu-berlin.de/MI02/MI02.HTM>  
<http://130.149.60.45/~farbmatrik> o <http://farbe.li.tu-berlin.de>

iscrizione TUB: 20160501-MI02/MI02L0NP.PDF /.PS  
Applicazione per la misura dell'output su display

TUB materiale: code=rh4ta

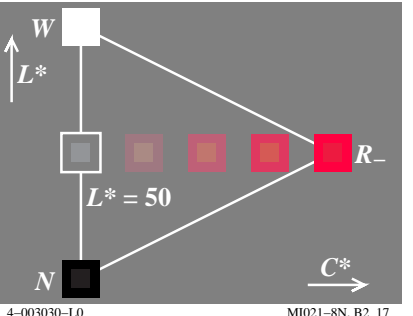
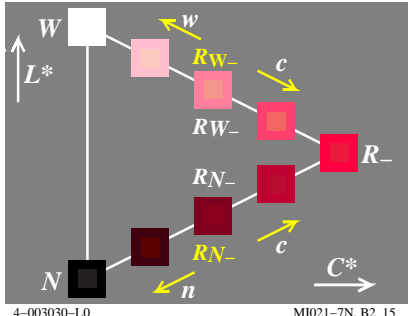
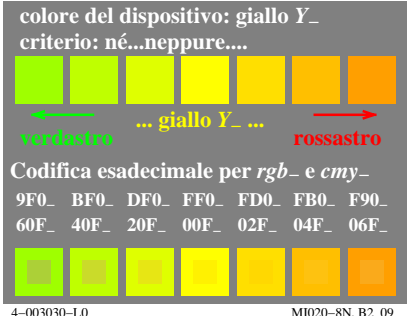
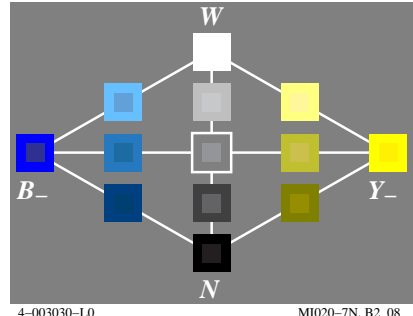
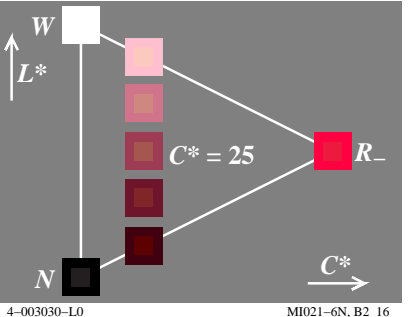
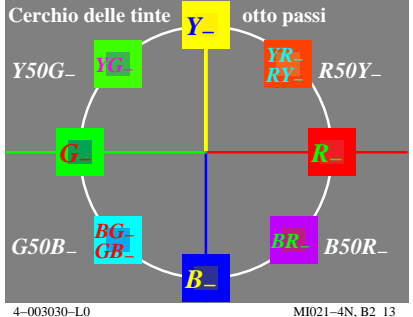
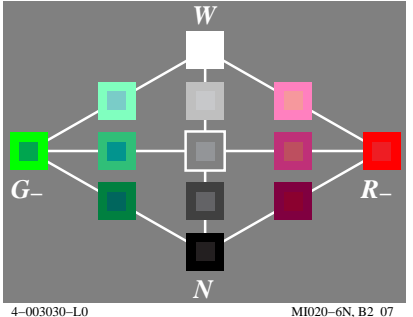
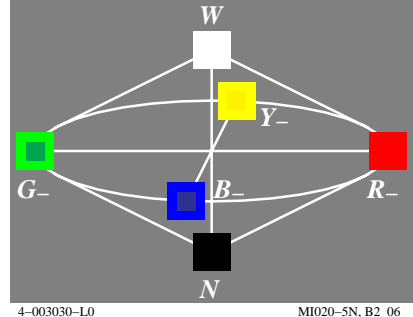
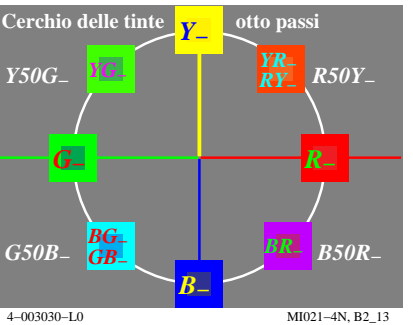
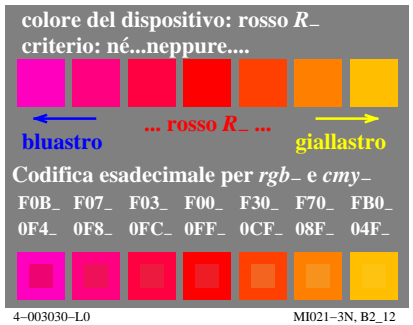
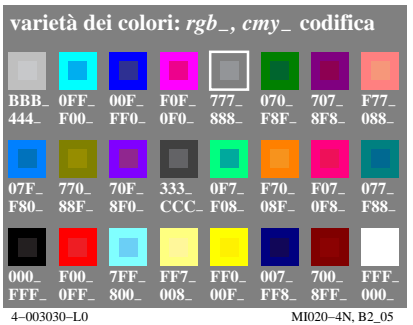
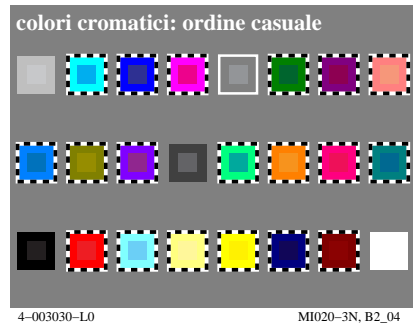
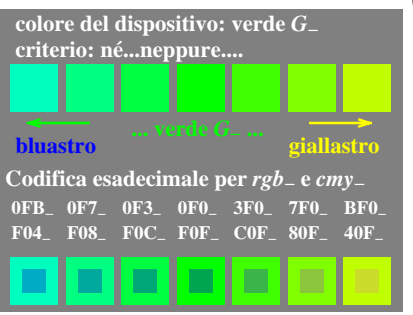
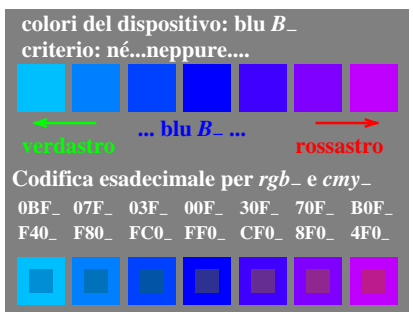
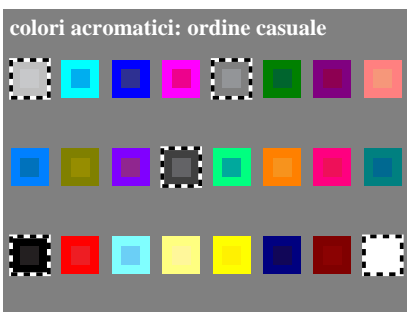
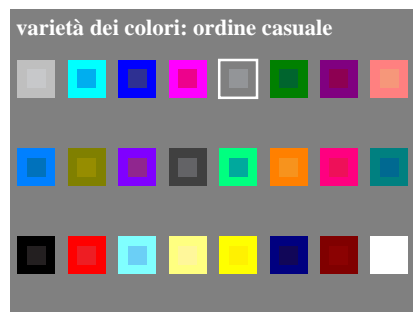
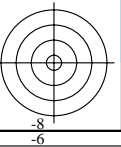
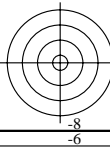
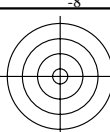


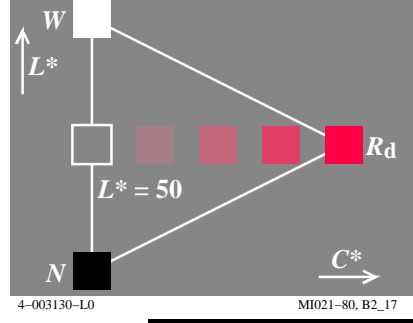
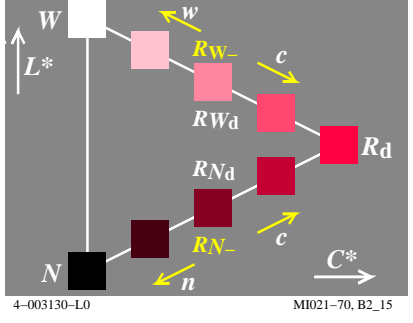
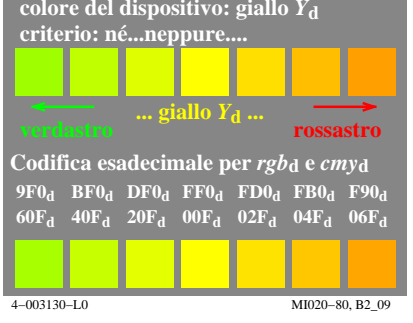
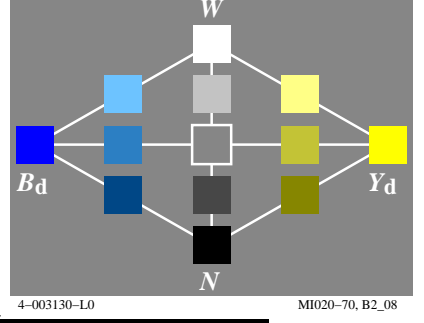
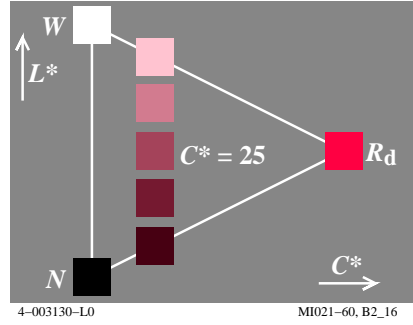
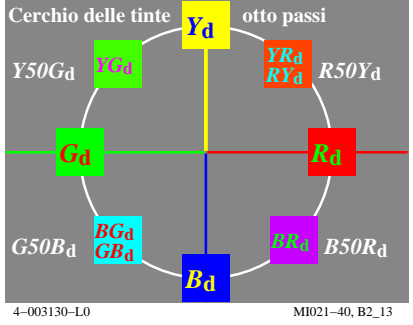
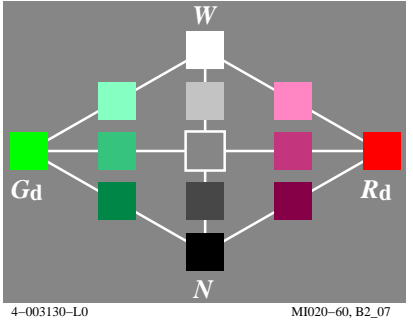
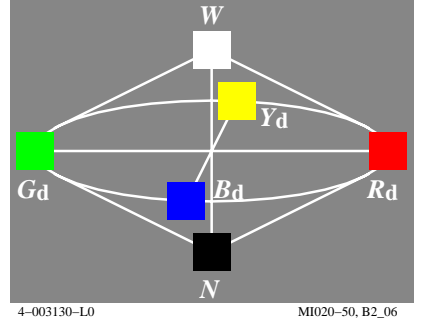
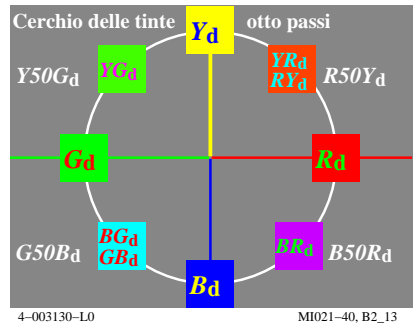
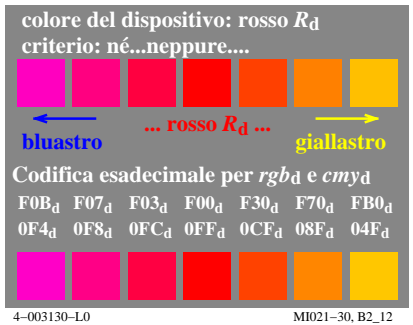
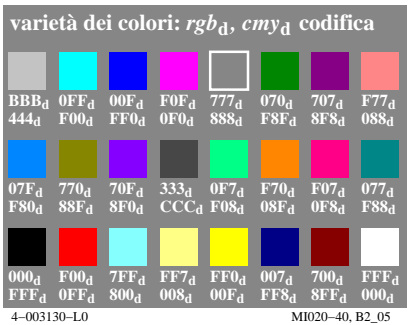
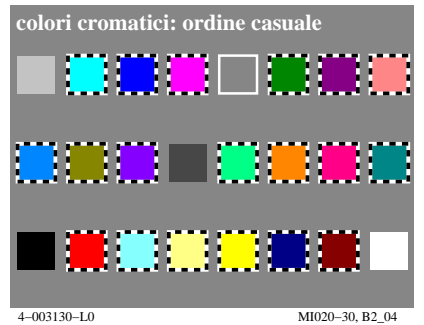
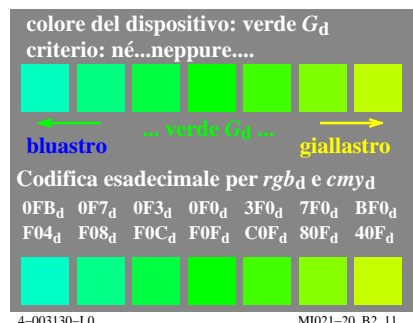
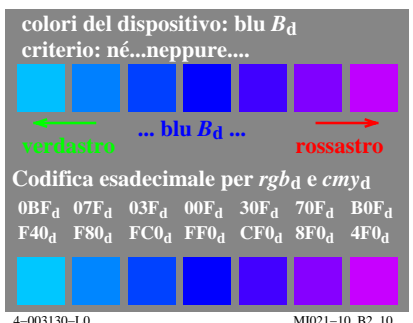
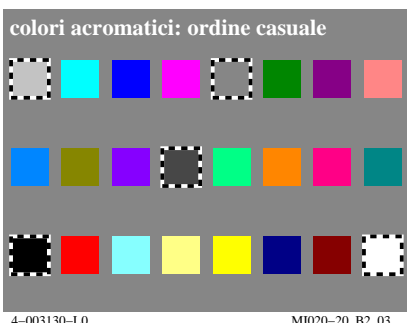
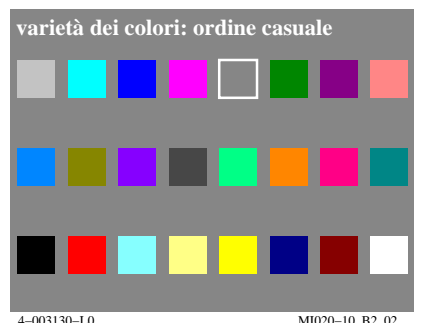
Grafico TUB-MI02; Grafica computerizzata e colorimetria  
Serie di immagini MI02, 3D=0, de=0

Input: rgb/cmyk -> rgb/cmyk  
Output: nessun cambiamento



vedi file simili: http://farbe.li.tu-berlin.de/MI02/MI02.HTM  
http://130.149.60.45/~farbmatrik o http://farbe.li.tu-berlin.de

iscrizione TUB: 20160501-MI02/MI02L0NP.PDF /PS  
Applicazione per la misura dell' output su display, nessuna separazione  
TUB materiale: code=rh4ta



http://farbe.li.tu-berlin.de/MI02/MI02L0NP.PDF /.PS; inizio dell'output  
N: nessuna linearizzazione 3D (OL) nel file (F) o PS-startup (S), pagine 1/2

vedi file simili: http://farbe.li.tu-berlin.de/MI02/MI02.HTM  
http://130.149.60.45/~farbmatrik o http://farbe.li.tu-berlin.de

iscrizione TUB: 20160501-MI02/MI02L0NP.PDF /.PS  
Applicazione per la misura dell'output su display

TUB materiale: code=rh4ta

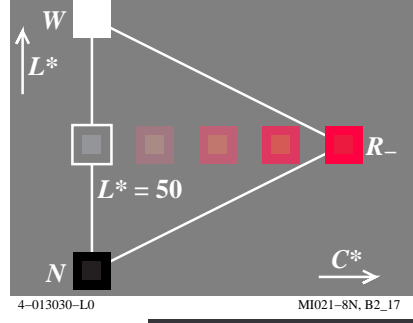
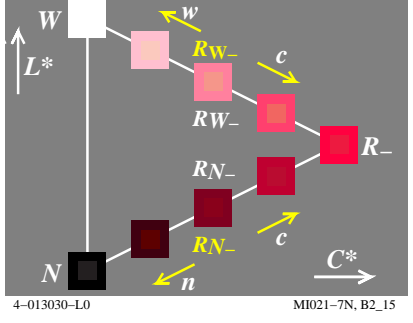
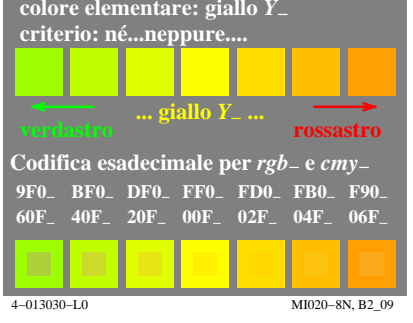
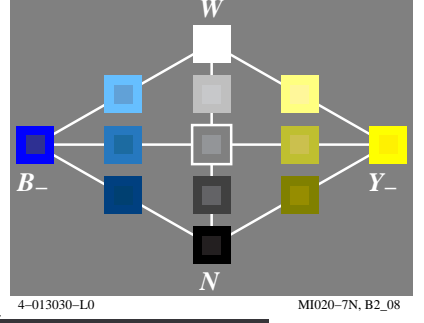
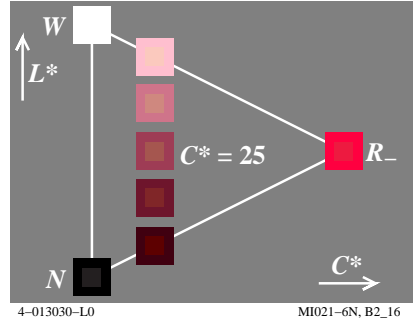
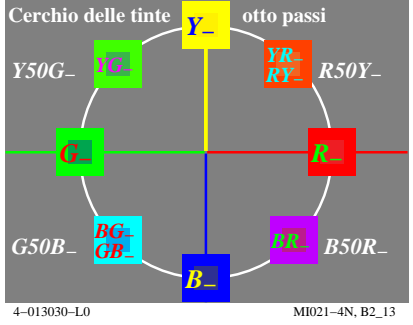
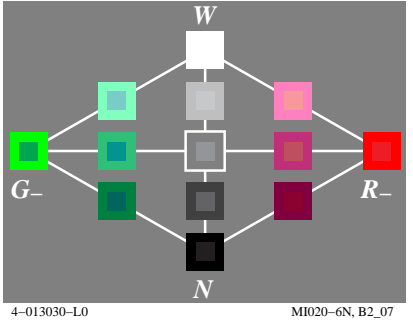
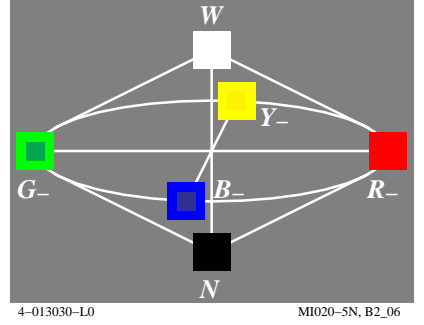
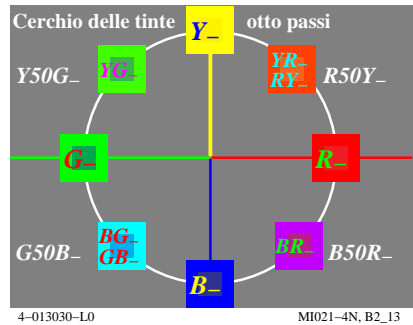
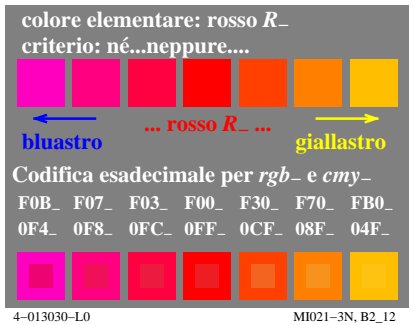
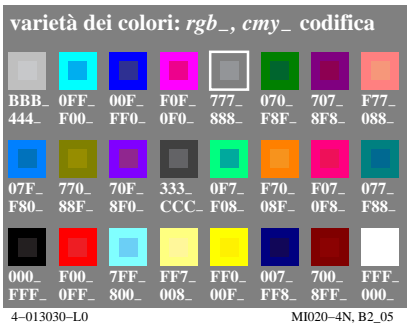
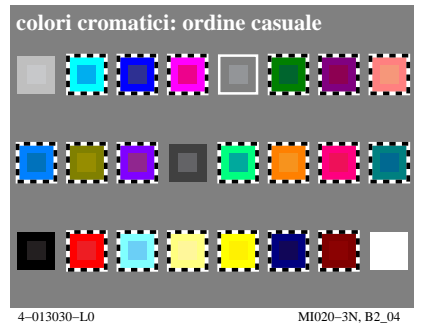
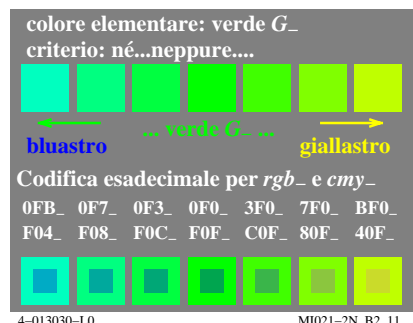
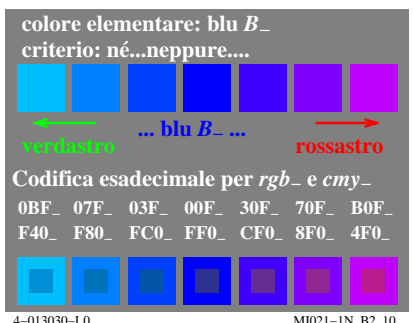
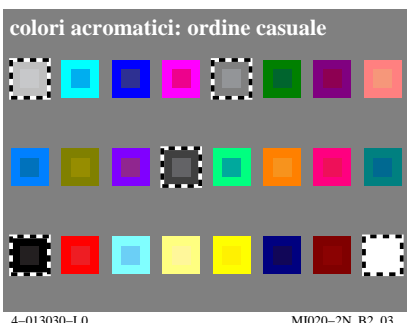
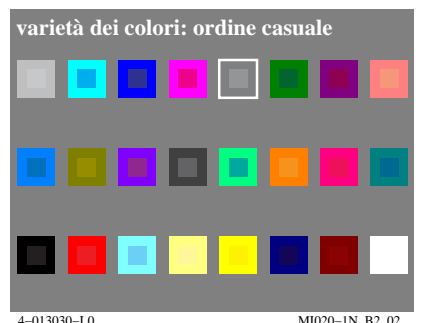


Grafico TUB-MI02; Grafica computerizzata e colorimetria  
Serie di immagini MI02, 3D=0, de=1

Input: rgb/cmyk -> rgb/cmyk  
Output: nessun cambiamento



http://farbe.li.tu-berlin.de/MI02/MI02L0NP.PDF /PS; Output di trasferimento N: nessuna linearizzazione 3D (OL) nel file (F) o PS-startup (S), pagine 2/2

vedi file simili: http://farbe.li.tu-berlin.de/MI02/MI02.HTM http://130.149.60.45/~farbmatrik o http://farbe.li.tu-berlin.de

iscrizione TUB: 20160501-MI02/MI02L0NP.PDF /PS Applicazione per la misura dell'output su display, nessuna separazione TUB materiale: code=rh4ta

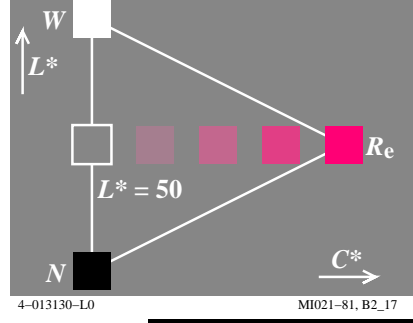
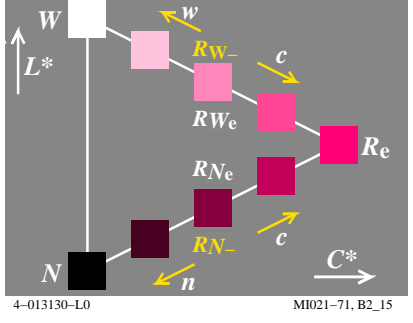
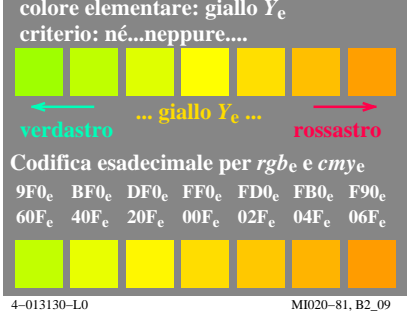
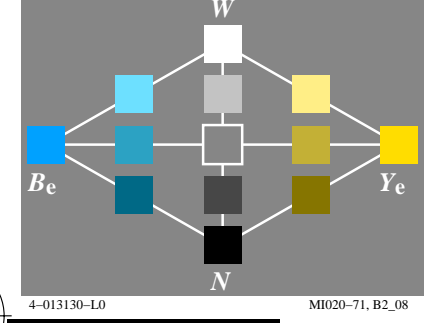
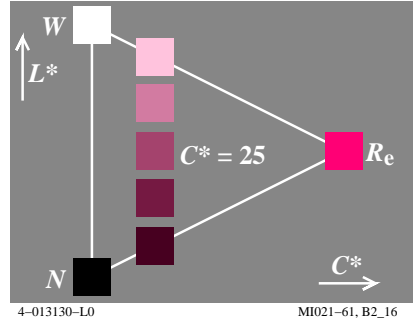
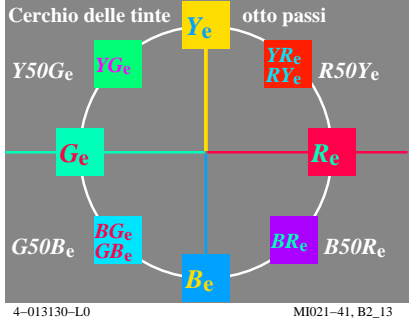
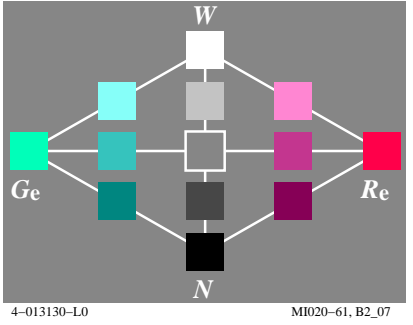
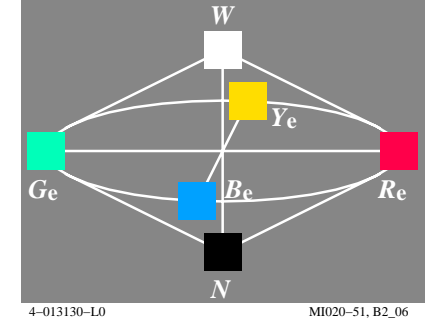
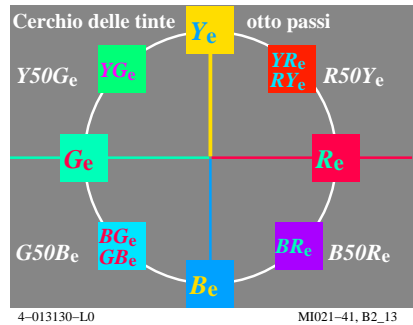
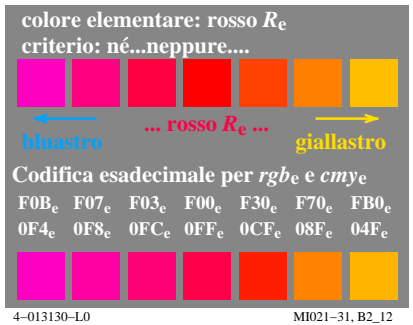
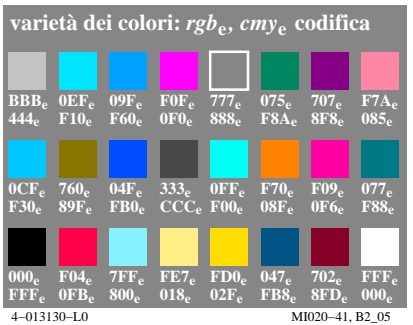
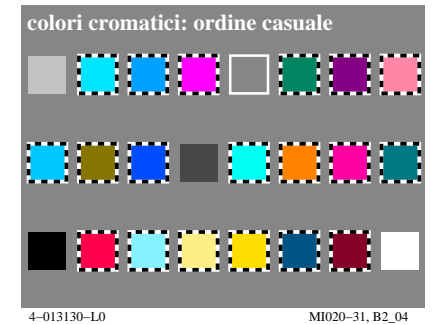
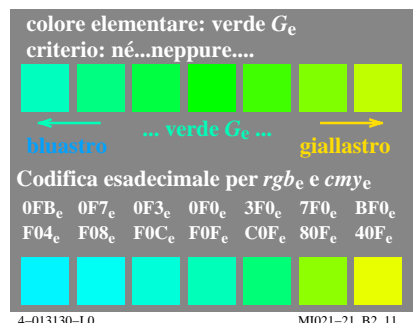
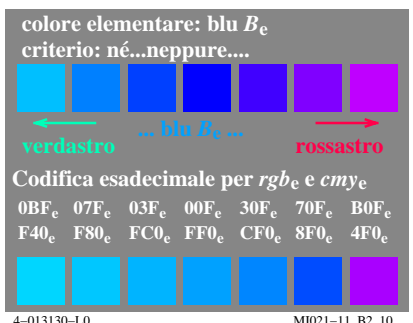
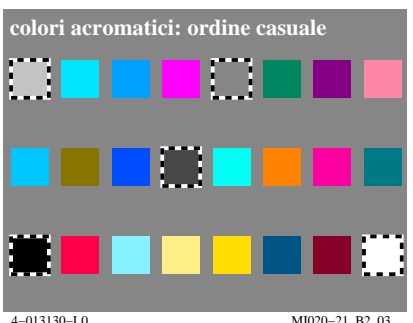
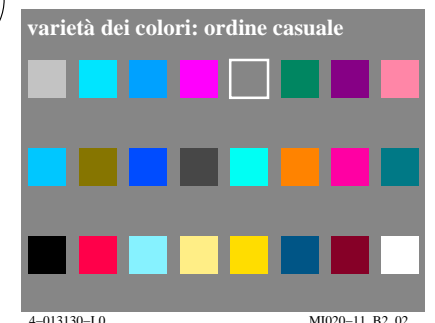


Grafico TUB-MI02; Grafica computerizzata e colorimetria Serie di immagini MI02, 3D=0, de=1, sRGB

Input:  $rgb/cmyk \rightarrow rgb_e$  Output: trasferire a  $rgb_e$

